

LENS COVE — MAINSHIP



Builder: MAINSHIP

Year Built: 1995

Model: Motor Yacht

Price: PRICE ON APPLICATION

Location: United States

LOA: 40' 7" (12.37m)

Beam: 13' 6" (4.11m)

Max Draft: 3' 5" (1.04m)

Our experienced yacht broker, Andrey Shestakov, will help you choose and buy a yacht that best suits your needs **Lens Cove — MAINSHIP** from our catalogue. Presently, at Shestakov Yacht Sales Inc., we have a wide variety of yachts available on our sale's list. We also work in close contact with all the big yacht manufacturers from all over the world.

If you would like to buy a yacht **Lens Cove — MAINSHIP** or would like help answering any questions concerning purchasing, selling or chartering a yacht, please call **+1(954)274-4435**

TABLE OF CONTENTS

TABLE OF CONTENTS	2
SPECIFICATIONS	4
Overview	4
Basic Information	5
Dimensions	5
Speed, Capacities and Weight	6
Accommodations	6
Hull and Deck Information	6
Engine Information	6
DETAILED INFORMATION	7
Description	7
Exclusions	8
Disclaimer	8
PHOTOS	9
foredeck	9
flybridge	9
salon	9
settee	9
salon	9
salon	9
110v fridge	10
galley	10
guest	10
master	10
head	11
engine room	11
port engine	11
starboard	11

generator	11
battery charger	11
CONTACTS	12
Contact details	12
Telephones	12
Office hours	12
Address	12

SPECIFICATIONS

Overview

- Fabulous example of a well maintained diesel powered Sedan Bridge.
- This Mainship has been expertly maintained as a winter home to her Canadian owners.
- She was repowered in 2000 with 300hp Yanmars. Upgrades include hardwood floors throughout, fully enclosed flybridge, custom cockpit canvas sunshade (new). New water tank installed 2016. New automatic bilge pump installed 2016.
- Engine serviced Fall of 2016 including oil change, belts, hoses, new water pumps.
- Easy to see in Ft. Lauderdale.
- Salon:
 - L shaped couch with table
 - U shaped dinette couch with table
 - Back cushion replaced 2016
 - 2 Marine Air reverse cycle air conditioner units
- Accommodations:
 - Queen master with lots of storage and two hanging lockers
 - Over under single bunks in guest cabin, drawers and hanging locker
 - Large lavatory with large ensuite shower
 - Electric Lectro-san head
- Galley:
 - Princess 2-burner electric stove
 - Avanti full size 110v refrigerator/freezer
 - LG microwave
 - stainless sink
- Engine Room:
 - Twin 300hp Yanmar 6LP-STE engines, 1122 hours
 - Kohler 8kw generator with 1246 hours
 - 2 house, 2 engine and 1 generator 12V batteries (all new in 2015)
 - Dytek battery charger
 - Sea Fire Halon automatic fire suppression
 - Safe-T-Alert carbon monoxide detector
 - high water alarm
 - 6 gal. hot water heater
 - 3 automatic bilge pumps
- Additional Information:
 - Twin 125v 30amp ships service, two 50' 30 amp shorecords
 - 2 10lb fire extinguishers – new in 2012
 - One Bruce main and one Danforth back-up anchor – rope and chain rode
 - Simpson Lawrence windlass
 - Full canvas enclosure on flybridge
 - Custom aft deck sun shade

- Integrated swim platform
- complete set of fenders and lines, fender racks on foredeck stanchions
- complete Coast Guard safety package
- TV antennae and cable hook-up
- 22" x 22" bronze props
- 1 3/4" stainless steel shaft
- Yanmar diesels installed in 2000 with only 1122 hours
- 8kw diesel generator
- custom hardtop with walk-thru to bow
- The bridge has AC and full enclosure
- Salon, dinette, and galley are very generous and open Mid-ship berth on port and huge head with separate walk-in shower to starboard
- Owners cabin is forward and light and spacious
- Call today for more info or to schedule a preview
- Disclaimer:
- The Company offers the details of this vessel in good faith but cannot guarantee or warrant the accuracy of this information nor warrant the condition of the vessel. A buyer should instruct his agents, or his surveyors, to investigate such details as the buyer desires validated. This vessel is offered subject to prior sale, price change, or withdrawal without notice.

Basic Information

Category: Motor Yacht

Sub Category: Flybridge

Model Year: 1995

Year Built: 1995

Country: United States

Fly Bridge: Yes

Dimensions

LOA: 40' 7" (12.37m)

Beam: 13' 6" (4.11m)

Max Draft: 3' 5" (1.04m)

Clearance: 17' 0" (5.18m)

Speed, Capacities and Weight

Displacement: 20000 Pounds

Water Capacity: 93 Gallons

Holding Tank: 30 Gallons

Fuel Capacity: 310 Gallons

Accommodations

Total Cabins: 2

Total Berths: 3

Sleeps: 4

Total Heads: 1

Hull and Deck Information

Hull Material: Fiberglass

Deck Material: Fiberglass

Hull Configuration: Modified V-Hull

Hull Finish: Aluminum

Engine Information

Engines: 2

Manufacturer: Yanmar

Model: 6LP STE

Engine Type: Inboard

Fuel Type: Diesel

DETAILED INFORMATION

Description

- Fabulous example of a well maintained diesel powered Sedan Bridge.
- This Mainship has been expertly maintained as a winter home to her Canadian owners.
- She was repowered in 2000 with 300hp Yanmars. Upgrades include hardwood floors throughout, fully enclosed flybridge, custom cockpit canvas sunshade (new). New water tank installed 2016. New automatic bilge pump installed 2016.
- Engine serviced Fall of 2016 including oil change, belts, hoses, new water pumps.
- Easy to see in Ft. Lauderdale.
- Salon:
 - L shaped couch with table
 - U shaped dinette couch with table
 - Back cushion replaced 2016
 - 2 Marine Air reverse cycle air conditioner units
- Accommodations:
 - Queen master with lots of storage and two hanging lockers
 - Over under single bunks in guest cabin, drawers and hanging locker
 - Large lavatory with large ensuite shower
 - Electric Lectro-san head
- Galley:
 - Princess 2-burner electric stove
 - Avanti full size 110v refrigerator/freezer
 - LG microwave
 - stainless sink
- Engine Room:
 - Twin 300hp Yanmar 6LP-STE engines, 1122 hours
 - Kohler 8kw generator with 1246 hours
 - 2 house, 2 engine and 1 generator 12V batteries (all new in 2015)
 - Dytek battery charger
 - Sea Fire Halon automatic fire suppression
 - Safe-T-Alert carbon monoxide detector
 - high water alarm
 - 6 gal. hot water heater
 - 3 automatic bilge pumps
- Additional Information:
 - Twin 125v 30amp ships service, two 50' 30 amp shorecords
 - 2 10lb fire extinguishers – new in 2012
 - One Bruce main and one Danforth back-up anchor – rope and chain rode
 - Simpson Lawrence windlass
 - Full canvas enclosure on flybridge
 - Custom aft deck sun shade

- Integrated swim platform
- complete set of fenders and lines, fender racks on foredeck stanchions
- complete Coast Guard safety package
- TV antennae and cable hook-up
- 22" x 22" bronze props
- 1 3/4" stainless steel shaft
- Yanmar diesels installed in 2000 with only 1122 hours
- 8kw diesel generator
- custom hardtop with walk-thru to bow
- The bridge has AC and full enclosure
- Salon, dinette, and galley are very generous and open Mid-ship berth on port and huge head with separate walk-in shower to starboard
- Owners cabin is forward and light and spacious
- Call today for more info or to schedule a preview
- Disclaimer:
- The Company offers the details of this vessel in good faith but cannot guarantee or warrant the accuracy of this information nor warrant the condition of the vessel. A buyer should instruct his agents, or his surveyors, to investigate such details as the buyer desires validated. This vessel is offered subject to prior sale, price change, or withdrawal without notice.

Exclusions

Owner's personal belongings.

Disclaimer

The Company offers the details of this vessel or yacht in good faith but cannot guarantee or warrant the accuracy of this information nor warrant the condition of the vessel. A buyer should instruct his representatives, agents, or his surveyors, to investigate such details as the buyer desires validated. This vessel or yacht is offered subject to prior sale, price change, or withdrawal without notice.

PHOTOS

foredeck



flybridge



salon



settee



salon



salon



galley



110v fridge



master



guest



head



engine room



port engine



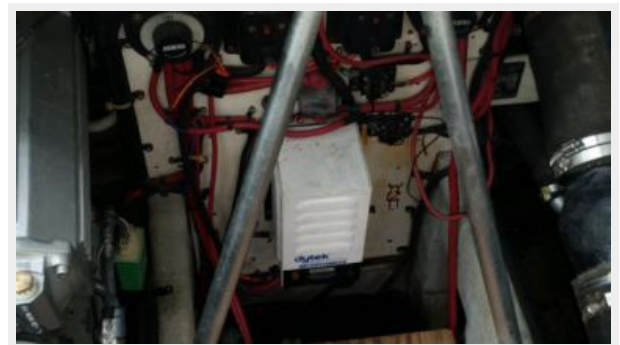
starboard



generator



battery charger



CONTACTS

Andrey Shestakov, leading yacht broker of the sales department of Shestakov Yacht Sales Inc. Shestakov Yacht Sales Inc., the official representative of the Miami/Fort Lauderdale FL headquarters.

Contact details

Email: **andrey@shestakovyachtsales.com**

Web: shestakovyachtsales.com/en/

Telephones

USA: +1(954)274-4435

Office hours

Monday – Saturday: **9:00 - 21:00** EDT

Sunday: **closed**

Address



Harbour Towne Marina, 850 NE 3rd St,
STE 213, Dania, FL 33004