

HALF FULL — VIKING



Builder: VIKING

Year Built: 2001

Model: Sport Fisherman

Price: PRICE ON APPLICATION

Location: United States

LOA: 61' 0" (18.59m)

Beam: 18' 2" (5.54m)

Max Draft: 5' 4" (1.63m)

Cruise Speed: 33 Kts. (38 MPH)

Max Speed: 37 Kts. (43 MPH)

Our experienced yacht broker, Andrey Shestakov, will help you choose and buy a yacht that best suits your needs **HALF FULL — VIKING** from our catalogue. Presently, at Shestakov Yacht Sales Inc., we have a wide variety of yachts available on our sale's list. We also work in close contact with all the big yacht manufacturers from all over the world.

If you would like to buy a yacht **HALF FULL — VIKING** or would like help answering any questions concerning purchasing, selling or chartering a yacht, please call **+1(954)274-4435**

TABLE OF CONTENTS

TABLE OF CONTENTS	2
SPECIFICATIONS	3
Basic Information	3
Dimensions	3
Speed, Capacities and Weight	3
Accommodations	3
Hull and Deck Information	3
Engine Information	4
DETAILED INFORMATION	5
Accommodations	5
Exclusions	13
Disclaimer	13
PHOTOS	14
CONTACTS	28
Contact details	28
Telephones	28
Office hours	28
Address	28

SPECIFICATIONS

Basic Information

Category: Sport Fisherman

Sub Category: Convertible

Model Year: 2001

Year Built: 2001

Country: United States

Vessel Top: Full / Tuna Tower

Dimensions

LOA: 61' 0" (18.59m)

Beam: 18' 2" (5.54m)

Max Draft: 5' 4" (1.63m)

Speed, Capacities and Weight

Cruise Speed: 33 Kts. (38 MPH)

Max Speed: 37 Kts. (43 MPH)

Water Capacity: 315 Gallons

Fuel Capacity: 1850 Gallons

Accommodations

Total Cabins: 3

Sleeps: 6

Total Heads: 3

Hull and Deck Information

Hull Material: Fiberglass

Deck Material: Teak

Hull Configuration: Semi Vee

Engine Information

Engines: 2

Manufacturer: MTU

Model: MTU V 12 2000

Engine Type: Inboard

Fuel Type: Diesel

DETAILED INFORMATION

Accommodations

HALF FULL is entered through the transom gate and door into the spacious cockpit. Moving forward and up two steps (one

step having a large refrigerated drink box below), the salon sliding door gives entry to the yacht's interior. The salon is

open and spacious with a U-shaped sofa to port, with coffee table. Moving forward to port is the gourmet galley with three

undercounter Subzero refrigeration and three freezer drawers as well. To starboard is the dinette with custom Corian table

with flush teak bullnose. Forward and down three stairs is the companionway giving access to the three staterooms and

three heads. The washer and dryer are located at the bottom of the stairway to starboard. Starboard of the salon door is

the ladderway to the bridge. HALF FULL has had her AV systems updated including LCD flat screen televisions.

Overview

Beam: 18'2"

Min Draft: 5'4"

Displacement: 87000

Cruise Speed: 33

Max Speed: 37

Engines: Detroit Diesel/MTU

Engine Model: V12-2000

HP: 1480

Hours: 2343

Salon

Upgraded ultraleather sofa

Main electrical panel

Full canvas carpet runner

Harmon Kardon upgrade stereo receiver

Automatic salon door - air drive system replaced by Viking with modern electric/belt drive unit in 2013

Teak hi-lo table

Quartz lights with dimmer switch

Amtico teak and holly at salon entrance, new 2012

A/C Control

Entertainment center with JVC with FM/stereo/VCR/DVD and Samsung LCD TV, new 2012

Home theater audio visual upgrade

Stereo speakers

Central vacuum

Valences and lambrequins wrapped in custom fabric, new 2015

Galley / Dinette

Corian countertop with bone sink

Trash compactor

Amtico teak and holly sole

Corian surface dinette table with teak bullnose and pedestal

Custom upgraded dinette settee

Fresh water gauge

Water pump indicator

(3) Undercounter refrigerator/freezer units

Icemaker in freezer

Instant hot water dispenser

Electric range

Exhaust fan

Garbage disposal

Microwave/convection oven

Sink

Storage cabinets and large pullout overhead drawers

Storage for dishes and glasses

Master Stateroom

Corian countertop with bone sink

Trash compactor

Amtico teak and holly sole, new 2012

Corian surface dinette table with teak bullnose and pedestal

Custom upgraded dinette settee

Fresh water gauge

Water pump indicator

(3) Undercounter refrigerator/freezer units

Icemaker in freezer

Instant hot water dispenser

Electric range

Exhaust fan

Garbage disposal

Microwave/convection oven

Sink

Storage cabinets and large pullout overhead drawers

Storage for dishes and glasses

Master Head

One-piece glass shower door

Sealand Head system

110V outlet

Head blower system

Wallpaper around upper vanity

Amisco teak and holly sole, new 2012

Exhaust fan

Linen storage

Medicine cabinet

Shower light

Salon door type catch on door

Custom wallpaper

Mirrored ceiling

VIP Stateroom

Custom VIP crossover arrangement

LCD flat screen TV Salon door type catch on door

Overhead hatch

Custom carpeting

Cedar-lined hanging locker

Stereo speakers

Custom wallpaper

Storage below berths

Speakers

Mirrored forward bulkhead

VIP Head

Wallpaper around upper vanity insert

Salon door type catch on door

Custom wallpaper

Amtico teak and holly sole, new 2012

Exhaust fan

Shower light

Sealand Head system

110V outlet

Head exhaust system

Mirrored ceiling

Starboard Guest Stateroom

Upper/Lower bunks

Custom wallpaper

Lower berth has lift up storage below

Hanging locker with (2) drawers below

Ensuite head

Day Head

Wallpaper

Sealand Head system

Shower

Amtico teak and holly sole, new 2012

Custom wallpaper

Mirrored ceiling

Fly Bridge

Hardtop recessed teaser reels

Custom helm pod with chrome wheel

Electronic single lever controls for pod

Electronic trolling valves

EZ2CY in front center panel

3-Sided enclosure, new 2014

Zippered vents at top of front (3) panels

(6) Rod rocket launcher aft rail

Teak helm/companion chair with stainless steel pedestals

Remote spotlight

Drop dry foam flybridge cushions

Large refrigerated cooler and freezer forward of helm

(4) Fusion 3-way marine stereo speakers

Electronics and Navigation

Garmin 7215 Plotter, 2012

Garmin 740 secondary plotter, 2012

Furuno FCV295 Depth sounder, 2012

(2) ICOM ICM-504 VHF Radios, 2012

ICOM ICM 802 VHF Radio with ICOM SP24 speaker, 2012

Sony CDX-H910UI Marine stereo for flybridge, 2012

(4) Fusion three-way marine speakers on flybridge, 2012

Garmin GMI 10 digital multi display with depth/knot log, etc, 2012

Furuno FI-50 Multi XL digital multi display with depth, water, temp etc, 2012

Simrad Robertson AP22 autopilot

Moritz factory alarm panel

Furuno 7112 Radar 72 mile radar

DDEC Control panel

Electrical System

Battery charger

Battery disconnect switches

Engine room lights

Battery paralleling

Bonded electrical system with ground plate

Navigation lights

Voltage stabilizer transformer

Batteries, heavy-duty with fiberglass boxes, all new 2013

(2) Glendinning cablemasters

Anchor light

Cockpit

Teak deck

Eskimo Ice machine

Rupp triple spreader outriggers

Outrigger hold-in-arms

Center rigger

(2) Rod holders in each tower leg

Transom door and gate

Cockpit freezer

Drink cooler at salon step entrance

Bait prep and tackle drawers

Freshwater/saltwater washdown

Speakers

Dockside phone and cable connection

Bluewater custom fighting chair with rocket launcher

Transom livewell/fish box

Transom swim steps with grab rails

Fish box dividers

(8) Rod holders in covering boards

Engine Room

DDC MTU 1480 HP

Engines with only 2343 hours

(2) Onan generators; starboard 3704 hours, Port 1359 hours

1200GPD Watermaker with auto backflush

110V Outlet on aft bulkhead

Engineroom circulating fan

Fire suppression system, auto/manual

Dedicated forward pump room for AC compressors and water systems

Fuel/water separator filters, engine and generator

A/C Freshwater pressurized systems

AC/Zones with reverse cycle heat

Bilge pumps

Engine room blowers

Fuel priming pumps

Eskimo Ice Machine

Oil change system

Water heater

Hull & Deck Equipment

Oval exhaust outlets

Lewmar windlass, no pulpit

Anchor

Teak deck

Bow rail

Pipewelders Tower

(4) Transom underwater lights, 2012

Tower controls

Light green hull color

Exclusions

Owner's personal belongings.

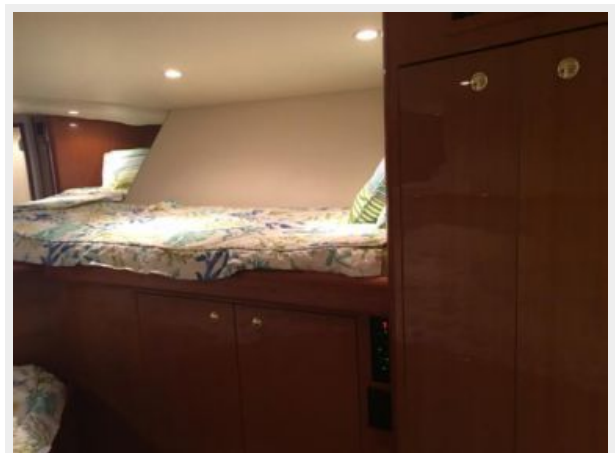
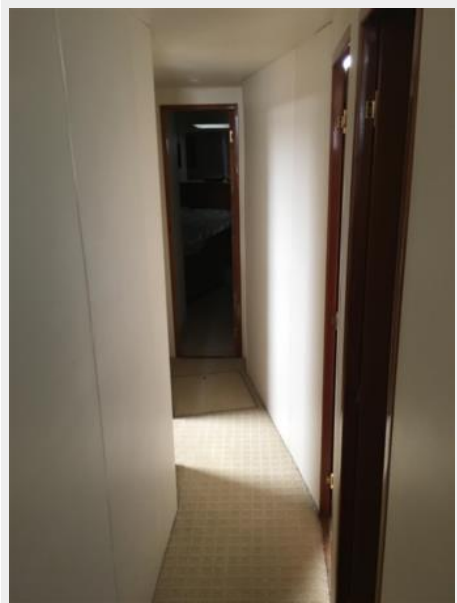
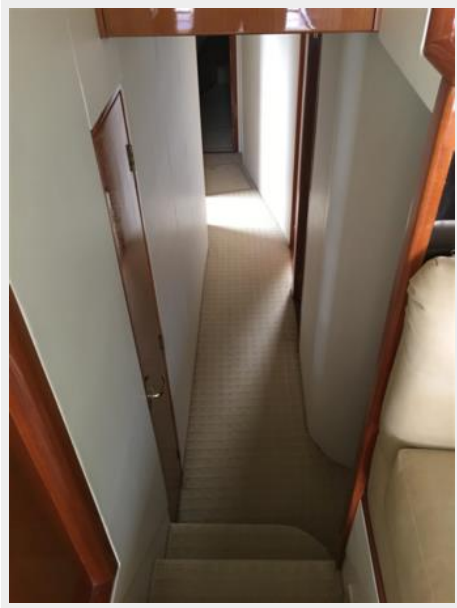
Disclaimer

The Company offers the details of this vessel or yacht in good faith but cannot guarantee or warrant the accuracy of this information nor warrant the condition of the vessel. A buyer should instruct his representatives, agents, or his surveyors, to investigate such details as the buyer desires validated. This vessel or yacht is offered subject to prior sale, price change, or withdrawal without notice.

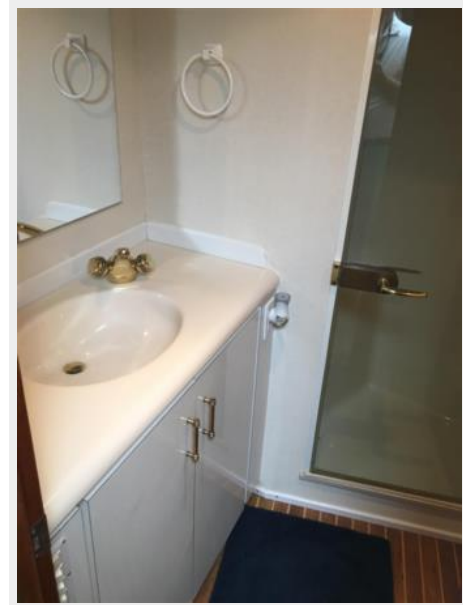
PHOTOS

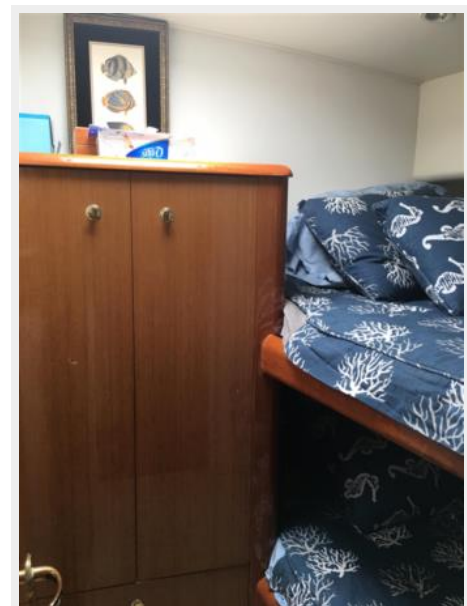
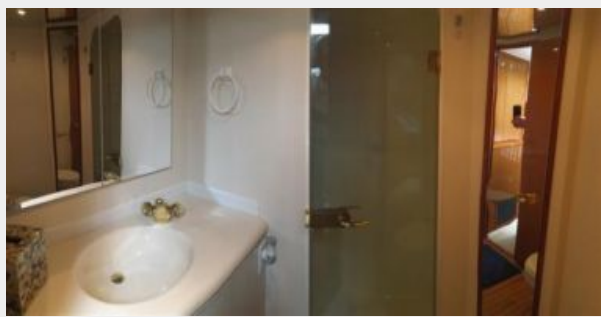


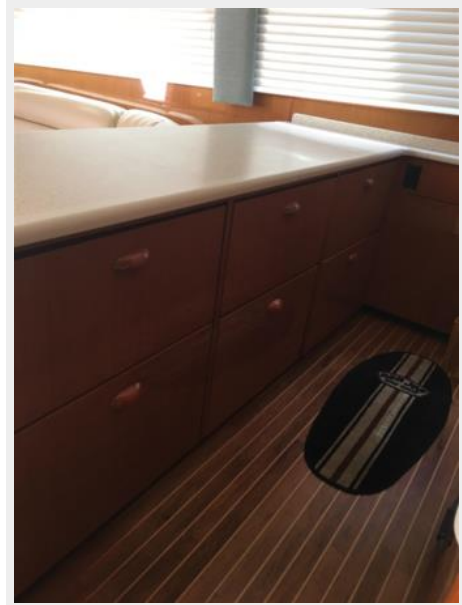
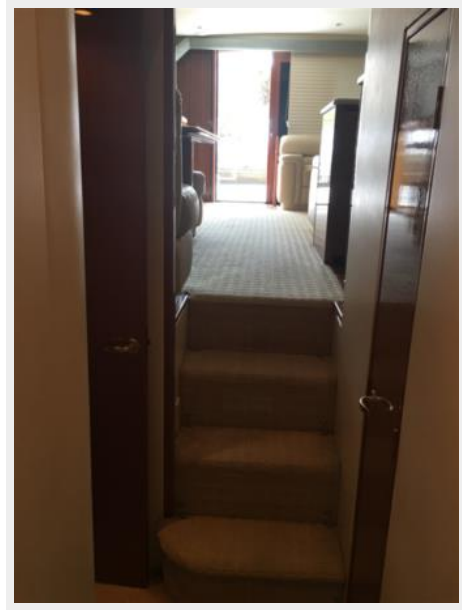
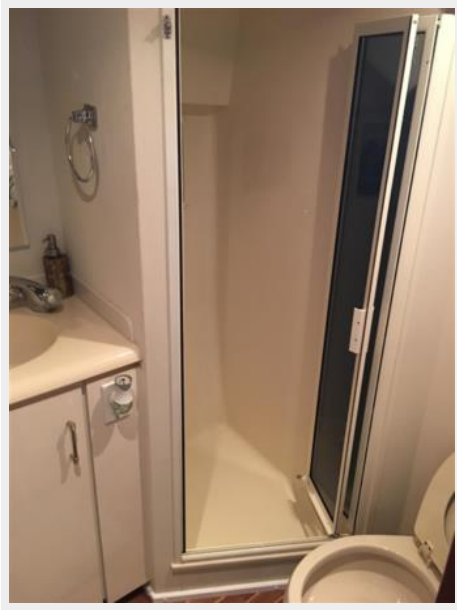




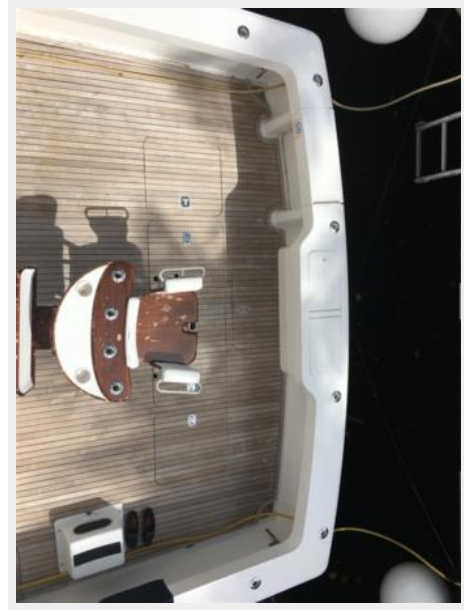




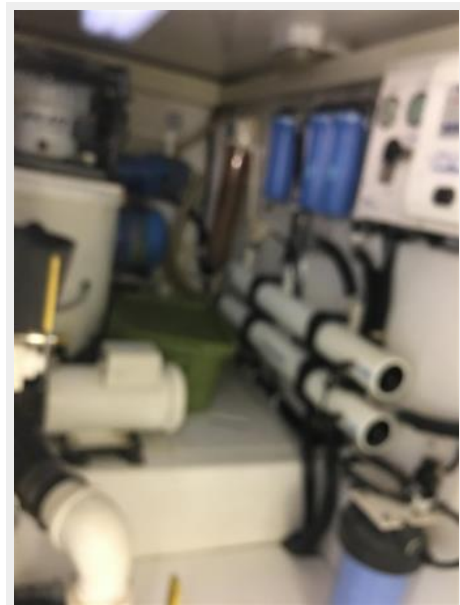


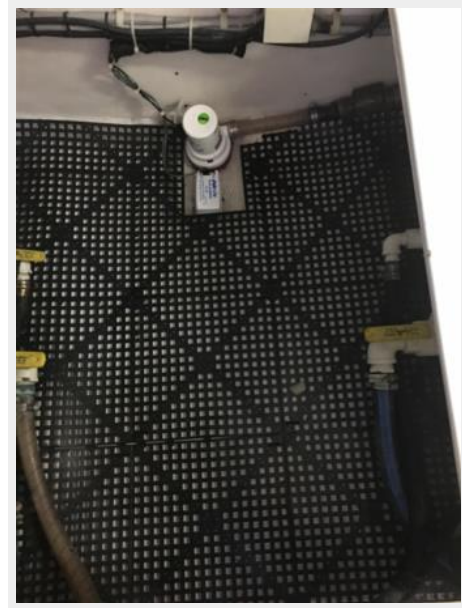
















CONTACTS

Andrey Shestakov, leading yacht broker of the sales department of Shestakov Yacht Sales Inc. Shestakov Yacht Sales Inc., the official representative of the Miami/Fort Lauderdale FL headquarters.

Contact details

Email: andrey@shestakovyachtsales.com

Web: shestakovyachtsales.com/en/

Telephones

USA: +1(954)274-4435

Office hours

Monday – Saturday: **9:00 - 21:00** EDT

Sunday: **closed**

Address



Harbour Towne Marina, 850 NE 3rd St,
STE 213, Dania, FL 33004