

SYBARIS — PERINI NAVI



Судостроитель: [PERINI NAVI](#)

Год постройки: 2016

Модель: Крейсерский кеч

Цена: ЦЕНА ЯХТЫ ПО ЗАПРОСУ

Местонахождение: Italy

Длина общая: 229' 8" (70.00m)

Ширина: 42' 8" (13.00m)

Макс. осадка: 41' 0" (12.50m)

Крейс. скорость: 12 Kts. (14 MPH)

Макс. скорость: 17 Kts. (20 MPH)

Купить **SYBARIS — PERINI NAVI** а также выбрать подходящую вам яхту из нашего каталога яхт вам поможет опытный яхтенный брокер Андрей Шестаков. На сегодняшний день компания **Shestakov Yacht Sales Inc.** имеет большое количество яхт в собственном списке продаж, а также тесно сотрудничает со всеми крупными яхтенными производителями по всему миру.

Для того чтобы купить яхту **SYBARIS — PERINI NAVI** а также проконсультироваться по любому вопросу связанному с покупкой, продажей, чартером яхт позвоните по телефону **+7(918)465-66-44**.

ОГЛАВЛЕНИЕ

ОГЛАВЛЕНИЕ	2
ХАРАКТЕРИСТИКИ	3
Основная информация	3
Размеры	3
Скорость, вместимость и масса	3
Размещение	3
Корпус и палуба	3
Информация о двигателе	4
ПОДРОБНОЕ ОПИСАНИЕ	5
DETAILED SPECIFICATIONS	5
Исключения	25
Отказ от ответственности	25
ФОТОГРАФИИ	26
КОНТАКТЫ	31
Контактная информация	31
Телефоны	31
Время работы	31
Адрес	31

ХАРАКТЕРИСТИКИ

Основная информация

Тип судна: Крейсерский кеч

Модельный год: 2016

Год постройки: 2016

Страна: Italy

Размеры

Длина общая: 229' 8" (70.00m)

Длина по ватерлинии: 190' 4" (58.00m)

Ширина: 42' 8" (13.00m)

Макс. осадка: 41' 0" (12.50m)

Скорость, вместимость и масса

Крейс. скорость: 12 Kts. (14 MPH)

Макс. скорость: 17 Kts. (20 MPH)

Чистый вес: 887 Pounds

Вместимость воды: 4226.752832 Gallons

Объем топливного бака: 19284.559796
Gallons

Размещение

Всего кают: 6

Спальные места: 12

Спальных мест экипажа: 11

Корпус и палуба

Материал корпуса: Aluminum

Дизайнер корпуса: Perini Navi

Дизайнер экстерьера: Philippe Briand Ltd
Дизайнер интерьера: PH Design, USA

Информация о двигателе

Двигатели: 2

Производитель: DDC/MTU

Модель: 16V 2000 M72

ПОДРОБНОЕ ОПИСАНИЕ

DETAILED SPECIFICATIONS

1. MAIN CHARACTERISTICS

TYPE	Displacement Sailing Yacht
RIG	Ketch – Flying bridge deck
HULL NO.	C.2227
BUILDER	Perini Navi
NAVAL ARCHITECT	Perini Navi with consulting from Philippe Briand
EXTERIOR DESIGN	Philippe Briand Ltd.
INTERIOR DESIGN	PH Design, USA
YEAR	2016
CONSTRUCTION	Aluminium Alloy 5083 H321 Hull & Superstructure Teak decks
CLASSIFICATION	Built to ABS: Malta Cross A1 Commercial Yachting Service, Malta Cross AMS, ACCU; MCA
FLAG	Cayman Islands
ENGINES	2 x 1,930Hp MTU - 16V 2000 M72 - Diesel
GRT	887 tons
DISPLACEMENT	920 tons fully loaded

2. DIMENSIONS

LOA	70.00m / 230'
LWL	58.00m / 190' at DVL
BEAM	13.00m / 42'7" max
DRAFT FROM DVL	4.50m / 14' 9" keel up
DRAFT FROM DVL	12.50m / 41' keel down
MAIN MAST	72.00m / 236'2" above DVL
MIZZEN MAST	62.00m / 203'4" above DVL

3. SPEED & RANGE

MAXIMUM SPEED	18.4 knots under power
CRUISING SPEED	12.5 knots
RANGE	4,000nm @ 12.5 knots 5,000nm @ 11.5 knots

4. CAPACITIES

ACCOMMODATION	12 x Guests in 6 Cabins (1st option)
----------------------	--------------------------------------

	10 x Guests in 5 cabins (2 nd option)
CREW	11 x Crew in 6 cabins (1 st option)
	12 x Crew in 7 cabins (2 nd option)
FUEL	73,000 litres / 19,285 US gallons
DAY TANK	11,000 litres / 2,905 US gallons
FRESH WATER	16,000 litres / 4,226 US gallons
LUBE OIL (ENGINES / GEN.)	700 litres / 185 US gallons
DIRTY LUBE OIL	800 litres / 211 US gallons
BLACK WATER	2,000 litres / 528 US gallons
BILGE WATER	2,000 litres / 528 US gallons
SLUDGE	1,500 litres / 396 US gallons

5. ACCOMMODATION

SYBARIS main deck features an expansive guest area which connects seamlessly to the cockpit by way of a 4 metre wide sliding door. Inside her main saloon, guests can enjoy uninterrupted sea views as well as an abundance of natural light. Outside, her 18 metre long flybridge provides an equally welcoming area for relaxation and entertainment.

GENERAL GUEST CABINS

The Owner and guest areas are on the same deck-level as the crew quarters, and can be reached via a central staircase leading down from the main saloon area. Direct access for the crew is via a guest-crew corridor located at the forward section of the guest area.

CABINS

- Wall lining in wood veneered panels
- Portlights on top of the titanium recessed walls
- All ceilings in titanium, except the toilets and day heads which are marble
- Wood veneered doors in bathrooms
- Furniture veneering in wood
- All beds with inner-spring mattresses/or Latex to the Owner's preference and leather leeboards with breathing holes in wooden mattress base
- Quilted headboard upholstered in leather
- Portlights provided with roman or wooden blinds, semi-blackout curtains on tracks plus electrically manoeuvred sheers and blackouts
- Ceiling lights, headboard lights and night lights
- TV recessed at wall
- Hotel type digital safe

BATHROOMS

- Wall lining in marble
- Floor in marble

- Ceiling panels in marble
- Wood veneered doors
- Shower stall in marble with shower tap and hand shower in titanium finishing, shower flooring in marble
- Internal finishing of wardrobes and drawers in wood veneer
- Washbasin top and splash board in marble
- Washbasin taps with titanium finish
- Bathroom accessories with titanium finish
- Ceramic Jets-supply WC with Toto washlet with bidet incorporated & cover
- Electrically heated titanium towel rails 1 x in each bathroom

DOUBLE GUEST CABINS & BATHROOMS

- Double bed
- Drawers under the bed
- 2 x Night tables with drawers beside the bed
- 1 x Large inboard side wardrobe, shelves
- Access door to the bathroom
- TV recessed at wall
- Small desk/vanity with chair
- Outboard side cabinet
- En-suite bathrooms as described above

CORRIDOR FROM GUEST CABINS TO OWNER'S QUARTERS

- Central staircase up to the main saloon
- Storage cabinet along the corridor for linen
- 1 x Access doors to Owner's suite
- 4 x Access doors to the Guests' cabins
- 1 x Access door to the crew area corridor
- Watertight door in bulkhead
- Various cabinets for storage & electrical panels
- Staircase walls in glass

OWNER'S QUARTERS:

The Owner's quarters are positioned aft with access from the guest/owner corridor via 1 x central door. (Entrance with 2 side cabinets)

CENTRAL AREA

- 1 x Central king size bed
- 2 x Night tables one on each side
- Low cupboards for storage at the bottom of the bed

- TV in ceiling with lowering mechanism & 180° rotation for viewing from the bed, living area or office area

OWNER'S LOUNGE (Stbd)

- 1 x Two- seats sofa with adjacent cabinets
- 1 x Coffee table in front of sofa
- 2 x Armchairs
- 1 x Rug
- Bathroom door

OWNER'S OFFICE (Port)

- 1 x Desk
- 1 x Desk chair
- 1 x Rug
- Bathroom door

OWNER'S BATHROOMS (Port & Stbd)

- His & Hers en-suite bathrooms
- Fittings as described above

AFT COCKPIT

COCKPIT AREA

- Teak planked deck with edge coming
- Ceiling in titanium
- 1 x Big structural aft sofa arrangement with 1 x central large four seater sofa and 2 x side two seater sofas
- 2 x Fixed coffee tables in teak and titanium & 2 x in marble at the sides
- Glass panels fitted behind the sofas into the aft curved structure for protection; handrails atop glass panels fitted along the stairs
- 1 x TV with up/down lift hidden in the ceiling
- 2 x End wings and structural cabinets, 1 x port with ER escape ladder, 1 x stbd for storage
- 1 x Central round 10/12 seater dining table with 12 x Royal Botania chairs
- 1 x Small pantry stb
- 1 x Small day head port
- 2 x Sliding doors from the aft cockpit leading into the saloon through 2 x entrances: doors are with titanium steel frame and large central glass panel, electrically and manually operated
- Cushions in semi-closed foam, upholstered with vinyl
- 10 x Accent pillows approx. 40 x 40cm
- Central round skylight above dining table
- Staircase up to fly bridge

DAY HEADS (port)

- 1 x Owner's / Guest day head located in aft cockpit, serves both aft cockpit and main saloon areas
- 1 x Day head in the main saloon also serves the wheelhouse
- Floor in marble
- Ceiling in marble
- Furniture same as Owner/Guest areas
- Washbasin top and splash board in marble
- Cupboard under the washbasin with cabinets
- Mirror
- Ceramic Jet WC with Toto washlet & bidet incorporated

SERVICE PANTRY (Stbd)

- Floor in teak planks
- Ceiling in Titanium
- Cupboard with shelves
- 1 x Under-counter fridge
- 1 x Marble under-mounted sink with mixer-tap
- Trash bin • 1 x Ice maker

AFT DECK AREA

- 2 x Large sun beds in teak Royal Botannia with upholstered cushions
- 2 x Stainless steel fittings to hold sun umbrellas
- 2 x Sun umbrellas, Royal Botannia - commercially available

MAIN SALOON

- The saloon can be accessed via 2 x watertight sliding doors

LIVING AREA

- 2 x Big central round shaped sofas and two arm chairs
- 3 x Central coffee tables
- 1 x Central aft ottoman
- 1 x Rug
- Large central staircase down to the Owner/Guest's area
- 10 x Accent pillows

STAIRCASE AREA

- Large central staircase up to the fly-bridge area with sliding glass door
- 2 x Rectangular floor skylights to illuminate lower deck guests corridor
- 2 x Pieces of art positioned on outboard sides

DINING AREA

- 1 x Marble table to accommodate 12 people
- 12 x Chairs
- 1 x Rug
- 1 x Sliding door forward stbd side to access wheelhouse corridor
- 1 x Sliding door forward port side to access wheelhouse corridor

PANTRY

The pantry can be accessed via the portside corridor leading to wheelhouse by a hinged door on starboard side and includes:

- Wooden planked floors
- Cupboard with shelves
- 1 x Refrigerator
- 1 x Stainless steel under-mounted sink provided with mixer-tap
- 1 x Jura coffee machine
- Trash bin
- Ice-maker Hoshizaki
- Hi-speed Miele dishwasher
- Microwave/small convection oven
- Trash compactor and recycle centre • 1 x Wine refrigerator

WHEELHOUSE

The wheelhouse area can be accessed through port and starboard side corridors separated by a sliding door from main saloon arranged as follows:

PORT SIDE CORRIDOR

- 1 x Sliding door to main saloon dining area
- 1 x Pantograph door electrically operated to side deck on port side
- Access door to Pantry - starboard side
- 1 x Ceiling skylight with shade blind
- 1 x Sliding door forward to wheelhouse command area • 1 x Fire door

STBD SIDE CORRIDOR

- 1 x Sliding door to main saloon dining area
- 1 x Pantograph door electrically operated to side deck on stbd side
- Access door to Pantry on stbd side
- 1 x Ceiling skylight with shade blind
- Inboard office provided with 1 x corner desk and 1 x desk chair
- Racks to be located on inboard side.
- Shelving for manuals where practicable
- 1 x Sliding door forward to wheelhouse command area • 1 x Sliding fire door

WHEELHOUSE COMMAND AREA

- Aft bulkhead fitted with central cabinet incorporating the electrical panel
- 1 x Double sofa in the middle
- 1 x Command console starboard side with monitors
- 2 x Helm chairs
- Switchboard top with leather border
- Charting area portside with 1 x chair

- Stair down to crew accommodation
- Central rectangular skylight with electrically operated blackout blind

FORWARD AREA

- 2 x Deck winches & lockers
- 6 x Sun beds Royal Botannia with 6 x small low tables in between
- 2 x Life rafts
- 2 x Tenders in dedicated wells
- 1 x Tender launching crane in dedicated locker (MCA compliant)
- Central hatch to emergency generator compartment
- 1 x Rescue boat in dedicated well
- Chain Locker hatch
- Garbage locker hatch • Crew escape hatch

FLYBRIDGE

- Teak planked deck
- Outdoor steering station and consoles with plexiglass covers
- 2 x Carbon finish steering wheels (port & starboard)
- 2 x Helm seats upholstered in vinyl or fabric in front of the steering wheels
- Companionway hatch down to main saloon
- 2 x Rectangular shape skylights aside of companionway
- Glass protection panels fitted forward of sun-bed
- 2 x Aluminium structural built-in cabinets with one refrigerator, storage
- 1 x L-shaped corner sofa (stbd side fwd), built in Titanium
- 1 x Coffee table in front of sofa
- 1 x Bar (port) w/ teak counter top (refrigerator, trash bin and 4 x stools)
- 2 x U-shaped corner sofas (port & stbd aft)
- 2 x Coffee tables (1 x in front of each sofa)
- 1 x Cristal round table
- Painted aluminium cabinet surrounding the mizzen mast base
- Large aft sunbathing area with big comfortable cushions
- Staircase from the aft cockpit

LAZARETTE (WITH STEERING COMPARTMENT)

- Accessed either through the external shell door or through an opening staircase from the aft deck
- Floor in rubber-teak type API
- Ceiling painted as Titanium
- Cabinets in plastic laminate with wood trimming
- Recessed ceiling lights
- Structural staircase up to the main deck with teak step treads
- Aluminium collars arranged to stow 6 x diving bottles near diving compressor on aft port side next to staircase up to deck
- 1 x Shell door, access to sea with hot/cold hand-shower port side
- 1 x Sliding watertight door access C.P. room port (completely sealed from ER)
- 1 x Full height cabinet for TV- Hi Fi System racks - stbd
- Adjacent cabinet for storage
- Sail system electrical panel located on outboard starboard side
- Hydraulic large stern door for access to stern platform
- Steering gear surrounded by removable panelling for maintenance
- Deck winches power pack (hydraulic)
- Gym gear • Massage table

CREW QUARTERS – GENERAL

The crew quarters and service areas are situated forward.

The following aesthetic features are shared by all crew areas unless otherwise specified:

CABINS / CORRIDOR & CREW MESS

- Wall lining in laminated plastic/wood and wood trimming
- Titanium ceiling panels
- Floors PE/PPE plank type finish
- Internal finishing of wardrobes and drawers in laminated plastic
- Portlight recesses in laminated plastic/ wood
- Latex mattress with pillows and lee-boards
- Main lighting is to be provided with ceiling lights, reading lights (one for each berth) and night lights
- Bathrooms/Galley and Laundry
- Wall lining laminated plastic and wood trimming
- Floors in PE/PPE plank type finish
- Doors lined with laminated plastic and trimmed in wood
- Internal finishing of wardrobes and drawers in laminated plastic
- All washbasin countertops and trim in marble

- Shower stall in Corian marble with non-slip grating, recess for toiletries, folding door in tempered glass, single shower tap with removable telephone-type shower head on rail with chrome finish
- Under-mounted white ceramic washbasin with water taps in view under Counters, not hidden behind panelling
- Sanitary system – JETS with seat covers
- Bathroom accessories - InDa Touch 4600 type
- Electrically heated towel rails standard type (1 x each bathroom)
- Washbasin and shower tap-sets: Hansgrohe Focus E2, chrome finish
- Ceiling lights, spots and shower light IP 55/65

CREW CABINS

- 1 x Double Captain's cabin with en-suite shower
- 5 x Double Bunked Crew cabins with en-suite shower

CREW MESS

- 1 x Bench U shaped-sofa with leather upholstered cushion seats and backs, storage under seats
- 1 x Dining table with wooden base, top & trim
- 2 x Moon Foppa Pedretti folding chairs
- Wall cabinet incorporating TV and audio equipment
- 2 x Side cabinets incorporating 1 x commercially available large refrigerator, 1 x dishwasher and 1 x sink with mixer tap
- CCTV monitor
- Electrical panel
- Staircase wooden lined leading up to the wheelhouse with sliding door
- Small lobby area to Guests corridor
- Division door between Guest and crew areas
- Access door to laundry on port side

6. MECHANICAL EQUIPMENT

ENGINES

2 x MTU 16V 2000 M72; 1,930Hp / 1,440kW
@2,250 rpm

Four stroke Diesel - coupled to 2 x shafts & 2 x feathering propellers

ENGINE HOURS

1,000 hours as of March 2017

GEARBOX

ZF 4660 with reduction of 5,040:1

PROPELLERS

2 x 4-bladed Ni/Br/Al Bronze w/ diam. 1500mm
2 x Spare blades

STEERING SYSTEM

Marsili

BOWTHRUSTER (FOLDING)	1 x 110 kW Voith 550-110 swing out thruster
	Propeller & flybridge wing controlled
GENERATORS	2 x 120 kW KiloPak variable speed 400V 50Hz
GENERATOR HOURS	1,300 hours as of March 2017
EMERGENCY GENERATOR	1 x 26 kW KiloPak 400V 50 Hz
ELECTRICITY	400V / 50 Hz 3-phase for machinery power 230V / 50 Hz 1-phase for lighting & low power machinery 24VDC - emergency lighting, signalling circuitry, electronic instruments & alarms 4-Wire with insulated neutral for 400/230VAC 2 x Conductors with insulated negative for 24 VDC
SOCKETS	Europlug Universal 400V & 230V
SHORE POWER	2 x 30m Shore cables
BATTERIES	AGM maintenance free with Mastervolt rectifiers
MAIN ENGINE START	2 x 24V groups + 2 x 24V, electronics for engines
SERVICE	1 x 24V – 400 A/h group for 24V service circuit
GENERATOR START	3 x 24V groups
EMERG. GENERATOR START	2 x 24V
FREQUENCY CONVERTERS	Floatech System
HYDRAULIC UNIT	Located in fwd area connected to hydraulic power pack for steering, ram, centreboard, shell door, aft cockpit lazarette access hatch, boarding ladders, aft gangway, after deck winches, windlass
AIR CONDITIONING	Condaria 180.000 Kcal/h total (refrigeration units) with 2 x Compressor groups 2 x Sea cold water pumps 2 x Chilled/hot water circulating pumps
VENTILATORS IN ER	2 x Axial type-reversible Gianneschi Type Gell/AP569/1 with Minimum 30 air changes /h
COMPRESSORS	Hydrovane HV02 2.2kW 10 bar
WATER MAKERS	2 x Idromar each with 12,000l/24hrs capacity, 50 micron sand filters
WATER SYSTEM	Idromar 10 micron Active carbon filter Idromar 7,000 litres / hour

WATER BOILERS	<p>Sterilising lamp Idromar 7,000 litres / hour 2 x Boilers with 400 l. capacity each boiler Circulating pump for boiler G 2 x WILO Z 30 Electric autoclave pumps G 2 x ACM 312 BT with driver control 400V AC</p>
TOILET SYSTEM	Jets vacuum with 2 x 3kW electric pumps
SEWAGE SYSTEM	Selmar Blue Sea reatment plant - 7,000 litres / day
BILGE TREATMENT	Facet CPS 3.2 E - 700 litres / hour capacity
FUEL PURIFYING	Algae-X Smart FPS MX-F
FUEL CENTRIFUGUE	Alfa Laval MAB 103 B24
FULEL FILTERS	Racor
PUMPS	<p>2 x ACM 311 BT electric fuel transfer 1 x “Excelsior 2” hand pump fuel transfer 2 x Oil transfer pumps G PQ30 Floating Tech cooling Floattech cooling</p>
7. SAILS & RIGGING	
SAIL PLAN	More than 3,000 square metres
SPARS	Carbon fibre spars
RIGGING	Carbo-Link rigging provided by Rondal
MAIN MAST MATERIAL	Carbon Fibre with 6 pairs of carbon fibre spreaders
MIZZEN MAST MATERIAL	Carbon Fibre with 4 pairs of carbon fibre spreaders
	1 x Jumper
SAIL WARDROBE	<p>Laminated sails: Carbon-spectra (North Sails) 3DI Sails meet the standard 2 year warranty period</p>
SAIL AREA APPROX: MIZZEN STAY SAIL	610 m2 / 6,565 ft ²
BATTENED MAIN SAIL	728 m2 / 7,836 ft ²
BATTENED MIZZEN SAIL	485 m2 / 5,220 ft ²
REACHER	1,018 m2 / 11,280 ft ²
MPS	1,606 m2 / 17,286 ft ²
JIB	590 m2 / 6,350 ft ²
TOTAL OF	5,031 m2 / 54,153 ft ² approx

**BOOM
STANDING RIGGING**Carbon with electric furling for main & mizzen
Carbon composite (Rondal)**RUNNING RIGGING**

by Gleistein, Liros, Gottifredi Maffioli

CAPTIVE REEL WINCHES

12 x Perini Navi, controlled from flying bridge

2 x Main boom sheets + power feeders

2 x Mizzen boom sheets + power feeders

2 x Jib sheets (Blade)

1 x Main sail halyard

1 x Mizzen sail halyard

2 x Main runners (2:1)

2 x Reacher sheets

2 x Auxiliary winches fore guy runners

2 x 3-speed Harken 1120 electric winches,
forward deck1 x 3-speed Harken 1120 electric winch on
flybridge**ELECTRIC WINCHES****8. NAVIGATION EQUIPMENT****REFERENCE BRANDS**

Furuno, Transas, Sailor

MAGNETIC COMPASS

Sperry

GYRO COMPASS

Sperry

ELECTRONIC COMPASS

B&G

AUTOMATIC PILOT

Navis

ECHO SOUNDER

1 x B&G; 1 x Skipper 200Hz

2 x Black box 96nm Radar/Arpa Furuno, X Band,
1x 4 foot Scanner, 1 x 6 foot scanner with 4”
antennas

interfaced with gyrocompass & AIS

1 x Radar Integrator Board for Chart Overlay on 1
Plotter

Furuno (Combined GPS/VHF)

AIS**DGPS**

2 x Furuno

CHART PLOTTER2 x Full paperless compliant independent Transas
ECDIS system**NAVTEX**

Paperless Furuno (WheelMark approved)

LOG

1 x Athena Doppler Speed Log with Transducer

1 x Interface for Log to Wind System

WIND INSTRUMENTS

B&G

SEARCHLIGHTS

2 x Adjustable searchlights (main & mizzen mast Spreaders)

MONITORS

Full integrated Team Italia bridge system including:

5 x MFD monitors, I chart and touch screens in crew mess and engineer cabin

MONITORING SYSTEM

Monitoring system computer to manage 3000 data acquisition points - Windows based system

9. COMMUNICATION EQUIPMENT**REFERENCE BRANDS**

Furuno, Sailor, Burnside, Telular Furuno, Sailor, McMurdo, Jothron

SATCOM

1 x Fleet Broadband Satcom

SAT TV SYSTEM

2 x Sat TVro 40" antenna radomes, with European LNB; 2 x LNB for USA/Canada; 2 x LNB for Latin

America; 1 x Multiswitch 16 outputs

VHF

1 x DSC VHF (wheelhouse)

1 x Remote handset (crew mess)

1 x DSC VHF (External)

1 x DSC VHF (Lazarette)

GSM

1 x GSM Interface 900/1800 Mhz

IRIDIUM

1 x Portable Iridium System with docking station

SSB

1 x MF/HF (SSB) Complete System with DSC

LOUNDHAILER

1 x Double horn D-2 Yacht Horn

TELEPHONE SYSTEM

VOIP based switchboard with a max of 24 x intercommunicating sockets & 8 x incoming lines
1 x Master (Programming) 24Key Phone including software for programming

9 x Standard 24Key Phone

9 x Cordless DECT Phone with 9 DECT antennas

1 x Door Phone

1 x Sockets for Fax/Printer

Incoming Lines for:

2 x Shore Lines

2 x Satcom Lines

1 x GSM Lines

2 x Spare

INTERCOM

Interphone with 2 x control units

ETHERNET LAN NETWORK WIFI

Driven by a 24 port Switch - Kerio System
Wireless Bridge System (with Antenna on the
Mast

to pick up WIFI in the marina where available)

MCA (GMDSS)

As applicable for GMDSS compliance

2 x EPIRB 406MHz with hydro release

10. DECK EQUIPMENT

REFERENCE BRANDS

Nautical Structures, Ascheo, Pin Craft, Motomar,
Speich, Gallinea

ANCHOR WINDLASSES ANCHORS

2 x Steen vertical axis-type hydraulic, foredeck
2 x 780 kg Pool-TW type certified fully balanced

ANCHOR CHAINS

2 x 165m high-tensile strength galvanised steel
naval

chains (grade U2) 24mm diamete, link stud

BOAT CRANE

1 x Aluminium tender launching crane

(MCA compliant) (Nautical Structures, Ascheo)

BOARDING LADDERS

2 x Automatic hydraulic (Pin Craft, Motomar) w/
lights

STERN GANGWAY

1 x Telescopic gangway (Pin Craft, Motomar)

SWIMMING PLATFORM

1 x At transom with structural stairs, carbon swim
ladder & shower / also serves as boarding
platform

AWNINGS

Fly bridge with removable structure

2 x Umbrellas on aft deck

WINDSHIELD WIPERS

5 x Speich, Gallinea, wheelhouse

WATERTIGHT HATCHES

1 x For lazarette service area from deck (port)

2 x Fwd for winches peak

2 x Forward for technical inspection

3 x For tender garage

1 x For crane

1 x For crew escape

2 x Fwd areas for storage

1 x Fwd stbd side for forepeak

1 x Fwd port side for garbage peak 2 x ATU

11. ENTERTAINMENT EQUIPMENT

REFERENCE BRANDS

TV

Samsung, Panasonic, LG

**AMPLIFIERS
SPEAKERS**Bose, Denon, Bi Amp,
B&W, Sonance, Bose, Clarion**REMOTE / CONTROL SYSTEM**

Crestron, AMX

NETWORK

Cisco

AUDIO-VIDEO ON DEMAND

Kaleidescape

SAT ANTENNAS

Seatel Cobham, Orbit

CONTROL SYSTEM

Flat Touch Screen 5' monitor w/ Domotic controls

AFT COCKPIT

- 1 x TV LED 50" VHD
- 1 x Stereo Power Amplifier 5 x 75W
- 8 x In-ceiling 2 way Speakers 60W (Waterproof)
- 1 x iPod Docking Station
- 1 x Touchscreen Remote Wi-Fi
- 1 x In-wall Keypad (8 Button)
- 1 x Video on Demand Player with Blu-Ray Option

MAIN SALON

- 2 x TV LED 60" with Bracket / ceiling mounted VHD
- 1 x AV Surround Receiver Amplifier 7.1 (120W)
- 5 x In-ceiling 2 way Speakers 120W
- 1 x Active Sub-Woofer 200W
- 1 x iPod Docking Station
- 1 x Touchscreen Remote Wi-Fi
- 1 x In-wall Keypad (8 Button)
- 1 x Satellite Decoder Predisposition
- 1 x Video on Demand Player with Blu-Ray Option
- 1 x Audio on Demand Player (4 Ch: Dining, Relax, Fly)
- 1 x Video on Demand Server (Capacity 100
Blu-Ray or 600 DVD or 600 CD or combination, expandable)

DINING AREA (AUDIO FROM MAIN SALOON + STAND ALONE AOD)

- 1 x In-wall Keypad
- 2 x In-ceiling 2 way Speakers 120W
- 1 x Stereo Power Amplifier 150W

WHEELHOUSE

- 1 x iPod Docking Station
- 2 x In-ceiling 2 way Speakers 60W (Magnetically Shielded)
- 1 x Power Supply 220VAC/12VDC
- 1 x Additional auxiliary socket

FLY BRIDGE (AUDIO FROM MAIN SALOON + STAND ALONE AOD)

- 2 x In-wall - 2 way Speakers 60W (Waterproof)
- 1 x In-wall Keypad (8 Button, Centre Area)
- 4 x In-wall - 2 way Speakers 60W (Waterproof)
- 1 x In-wall Keypad (8 Button, Aft Area)
- 4 x In-wall - 2 way Speakers 60W (Waterproof)
- 3 x Stereo Power Amplifier 150W
- 1 x Aux/iPod Plug (Waterproof)

OWNER'S AREA

- 1 x TV LED 55" with Bracket
- 1 x AV Surround Receiver Amplifier 7.1 (120W)
- 5 x In-ceiling 2 way Speakers 120W
- 1 x Active Sub-Woofer 200W
- 1 x iPod Docking Station
- 1 x Touchscreen Remote Wi-Fi
- 1 x In-wall Keypad (8 Button)
- 1 x Satellite Decoder Predisposition
- 1 x Video on Demand Player with Blu-Ray Option
- 2 x Audio Volume Control (Up-Down) for Bathrooms
- 2 x Single Stereo - 2 way Speakers 60W for Bathrooms
- 2 x Stereo Power Amplifier 60W for Bathrooms

GUEST CABINS (x 4)

- 1 x TV LED 37" with Bracket
- 1 x AV Surround Receiver Amplifier Stereo (120W)
- 2 x In-ceiling - 2 way Speakers 120W
- 1 x iPod Docking Station
- 1 x Touchscreen Remote Wi-Fi
- 1 x Satellite Decoder Predisposition
- 1 x Video on Demand Player with Blu-Ray Option
- 1 x Audio Volume Control (Up-Down) for Bathrooms
- 1 x Single Stereo - 2 way Speakers 60W for Bathrooms

CREW MESS

- 1 x TV LED 42" with Bracket
- 1 x Stereo Power Amplifier (120W)
- 4 x In-ceiling - 2 way Speakers 120W
- 1 x I-pod Docking Station
- 1 x Touchscreen Remote Wi-Fi

- 1 x Satellite Decoder Predisposition
- 1 x Video on Demand Player with Blu-Ray Option
- 1 x Intranet AV Streaming System (Crew
- Mess Sat & VOD)

GALLEY

- 1 x iPod Docking Station
- 4 x In-ceiling - 2 way Speakers 60W
- 1 x Power Supply 220VAC/12VDC

GYM- LAZARETTE

- 1 x TV LED 32" with Bracket
- 1 x Stereo Power Amplifier (120W)
- 4 x In-ceiling - 2 way Speakers 120W
- 1 x iPod Docking Station
- 1 x Touchscreen Remote Wi-Fi
- 1 x Satellite Decoder Predisposition
- 1 x Video on Demand Player with Blu-Ray Option
- 1 x Intranet AV Streaming System (Crew Mess Sat and VOD)

CAPTAIN CABIN

- 1 x TV LED 26" with Bracket
- 1 x Stereo Power Amplifier (120W)
- 2 x In-ceiling - 2 way Speakers 120W
- 1 x iPod Docking Station
- 1 x Touchscreen Remote Wi-Fi
- 1 x Satellite Decoder Predisposition
- 1 x Video on Demand Player with Blu-Ray Option

ENGINEER CABIN

- 1 x TV LED 26" with Bracket
- 1 x Stereo Power Amplifier (120W)
- 2 x In-ceiling - 2 way Speakers 120W
- 1 x iPod Docking Station
- 1 x Touchscreen Remote Wi-Fi
- 1 x Satellite Decoder Predisposition
- 1 x Video on Demand Player with Blu-Ray Option

LAUNDRY

- 1 x iPod Docking Station
- 2 x In-ceiling - 2 way Speakers 60W

- 2 x In-ceiling - 2 way Speakers 60W (Machine Area)
- 1 x Power Supply 220VAC/12VDC

LAZARETTE

- 1 x iPod Docking Station
- 2 x In-ceiling - 2 way Speakers 60W
- 1 x Power Supply 220VAC/12VDC

ENGINE ROOM (ECR)

- 1 x iPod Docking Station
- 2 x In-ceiling - 2 way Speakers 60W
- 2 x In-ceiling - 2 way Speakers 60W (Engine Room)
- 1 x Power Supply 220VAC/12VDC

CREW CABINS (X5)

- 1 x iPod Docking Station
- 2 x In-ceiling - 2 way Speakers 60W
- 1 x Power Supply 220VAC/12VDC

12. GALLEY EQUIPMENT

GALLEY

- Industrial-type cooking hob with fiddles, wall-mounted convection oven (INOX PIU') & combination-steam oven (INOX PIU')
- 4 x Induction hobs
- High-Speed Electrolux Dishwasher with quick cycle mode
- 1 x Variable speed drive-controlled extractor with stainless steel hood
- Walk-In refrigerators / freezers
- 3 x 2-Drawer refrigerator units
- Marble counter tops
- 1 x Miele Marine M8261 microwave oven
- 1 x Hoshizaki water cooled ice maker
- 1 x Trash compactor
- 1 x Trash bin
- 1 x Waste macerator
- Floor hatch to access to under lower deck dry storage compartment

LAUNDRY

- Forward of galley on port side adjacent to crew mess
- Corian counter top
- Linen cupboards & shelving over machines
- Cupboard on outboard side

- 2 x Miele Marine industrial washing machines (6,5kg load)
- 2 x Miele Marine industrial drying machines (6,5kg load)
- 1 x Miele Marine folding ironing machine
- 1 x Folding ironing board (Foppa Pedretti)
- 1 x Standard size stainless steel sink with tap

PANTRY

- 1 x Refrigerator
- 1 x Stainless steel under-mounted sink provided with mixer-tap
- 1 x Jura coffee machine
- Trash bin
- Ice-maker Hoshizaki
- Hi-speed Miele dishwasher
- Microwave/small convection oven

SERVICE PANTRY (stbd)

- Floor in wood veneered planks
- Ceiling same as Owner/ Guest areas
- Cupboard with shelves
- 1 x Stainless steel under-mounted sink provided with mixer-tap
- Ice maker
- Trash bin

FLYBRIDGE BAR

- 1 x Teak Bar
- Refrigerator
- Trash bin

4 x Stools CREW QUARTERS

- 3 x Icemakers (1 x in Pantry, 1 x Galley & 1 x Aft pantry)
- 2 x Custom made full height refrigerator compartments for Galley (1.8 m3)
- 2 x Cold store room close to Galley approx 2.8 m3 · 1 x Flybridge fridge
- 1 x Low level fridge of 40 litres approx in Crew Mess

13. SECURITY & SAFETY EQUIPMENT

SAFETY

- 2 x SART Radar transponder 9 GHz
- 1 x GMDSS Sat-C system
- 2 x Inflatable life rafts for 12 pax each, located on fore and aft deck
- 2 x Inflatable life rafts for 16 pax each, located on fore and aft deck
- 1 x First-aid medicine chest (Oceanic type)

- 27 x Type-tested life-jackets stowed in cabins including several children's lifejackets
- 2 x Ring life-belts fitted with luminous buoy & smoke signals, stowed in special stainless-steel holders
- 2 x Life-belts for working on deck in bad weather conditions
- Complete series of signal rockets and distress flares
- 1 x Boson's chair
- Battery-operated loud hailer

SECURITY

- CCTV with night and day video colour cameras:
 - o 2 x Speed Dome PTZ Camera under the First Spreader of the Mast
 - o 1 x Speed Dome PTZ Camera Top of the Mast (Side Mounted)
 - o 1 x Speed Dome PTZ Cameras in the engine room
 - o 1 x Fixed Camera under the Aft Cockpit ceiling o 1 x Lazarette
- General alarm system is MCA approved (ER, Owner-Guest- Crew areas, Laundry, main Salon, Lazarette, Aft deck)

FIRE FIGHTING

- Novec 1230 Firefighting System according to ABS & MCA certification
- Smoke detectors & Sprinkler system throughout
- Fire-pump G ACM 651 BT
- Emergency Fire-pump G ACM 651 BT
- 18m plastic-coated canvas fire-hoses close to hydrants
- Portable extinguishers according to ABS and MCA requirements
- 2 x Fireman's suit
- Boots and gloves
- 2 x Rigid helmets
- Approved electric safety lamp (hand lantern)
- Axe with an insulated handle

14. TENDERS & WATERSPORT EQUIPMENT

TENDER

- 2 x 7.00m Cockwells, 1 x Limousine, 1 x Sport
- 1 x 4.50m Zodiac Ribo 450 inflated rescue boat complete equipped with 1 x 25 Hp outboard engine, outfitted & equipment for compliance
- 1 x Tenders launching crane in dedicated locker (MCA compliant)

DIVING

- Scuba bottle compressor: Bauer Capitano 140-E, 225 bar -8.4 m3/h
- 2 x Diving bottles in near diving compressor on aft port side beside staircase to deck

15. COMMENTS

The all-aluminium vessel has been designed by the in-house team at Perini Navi, with naval architecture consultation and sail plan optimisation from Philippe Briand.

Her interior design was undertaken by the U.S. studio PH Design, who have utilised high quality materials such as titanium into both the structural and aesthetic design.

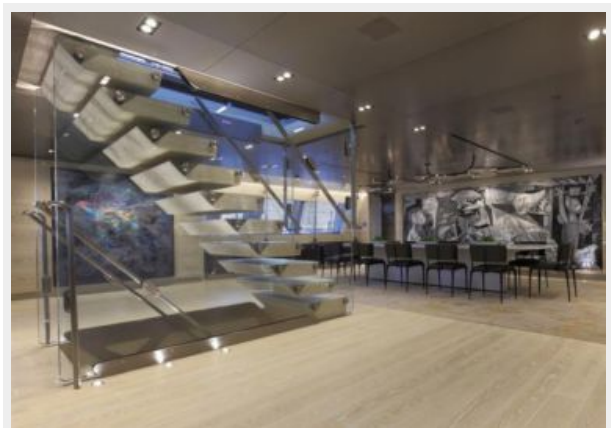
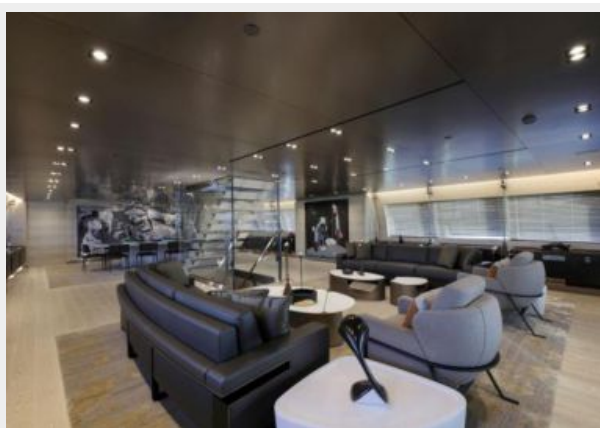
Исключения

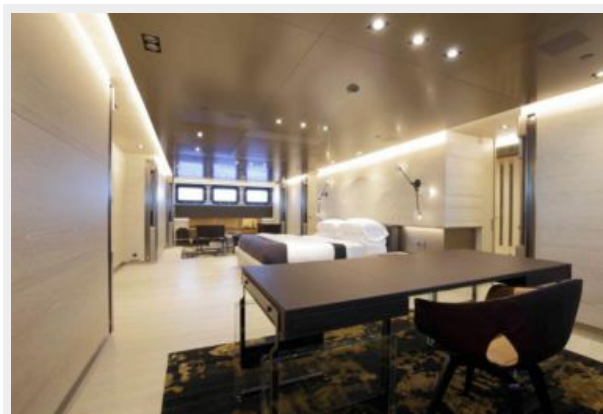
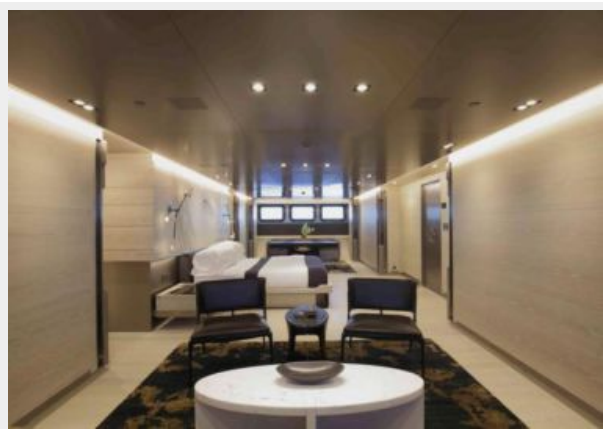
При продаже яхты исключаются личные вещи владельца.

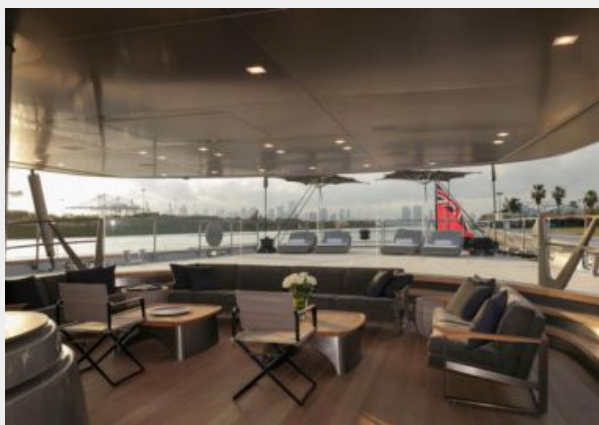
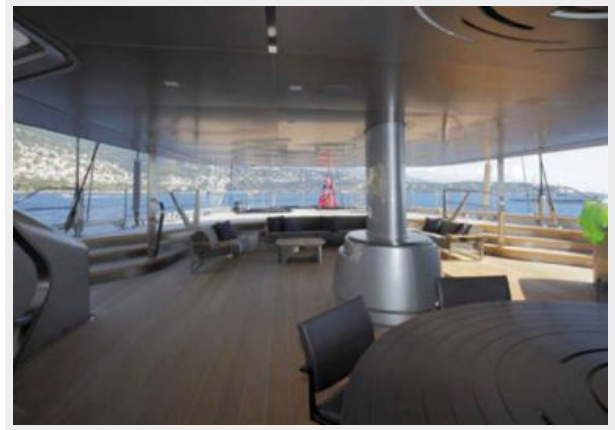
Отказ от ответственности

Компания предоставляет описание судна или яхты добросовестно, но не может гарантировать точность этой информации, а также не ручается за техническое состояние. Покупатель должен проинструктировать своих агентов или оценщиков исследовать представленную информацию более подробно, по собственному желанию. Продажа судна или яхты, изменение цены или снятие с продажи будет происходить без предварительного уведомления.

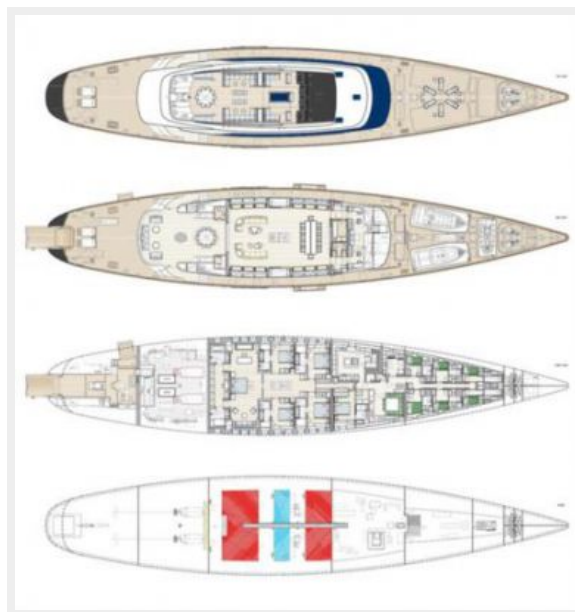
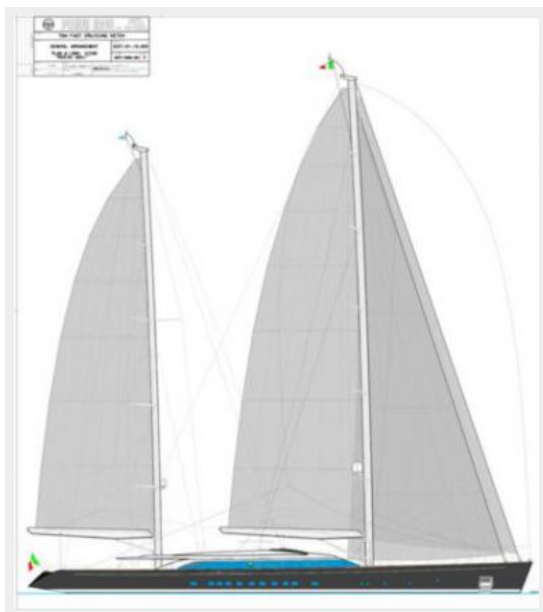
ФОТОГРАФИИ











КОНТАКТЫ

Андрей Шестаков (Andrey Shestakov) – ведущий яхтенный брокер отдела продаж яхт и судов компании Shestakov Yacht Sales Inc. Официальный представитель Shestakov Yacht Sales Inc. для русскоговорящих клиентов в центральном офисе компании в Майами/Форт Лодердейл/Флорида/США.

Контактная информация

Email: andrey@shestakovyachtsales.com

Web: shestakovyachtsales.com

Телефоны

Краснодарский край: **+7(918)465-66-44**

США, Майами, Флорида: **+1(954)274-4435**

Время работы

Понедельник – Суббота: **9:00 - 21:00**
EDT

Воскресенье: **Закрито**

Адрес



Harbour Towne Marina, 850 NE 3rd St,
STE 213, Dania, FL 33004