

IMPERVIOUS — REAL SHIPS



Судостроитель: REAL SHIPS

Год постройки: 1995

Модель: Моторная яхта

Цена: ЦЕНА ЯХТЫ ПО ЗАПРОСУ

Местонахождение: United States

Длина общая: 70' 0" (21.34m)

Ширина: 21' 0" (6.40m)

Макс. осадка: 4' 6" (1.37m)

Крейс. скорость: 9 Kts. (10 MPH)

Макс. скорость: 11 Kts. (13 MPH)

Купить **Impervious — REAL SHIPS** а также выбрать подходящую вам яхту из нашего каталога яхт вам поможет опытный яхтенный брокер Андрей Шестаков. На сегодняшний день компания **Shestakov Yacht Sales Inc.** имеет большое количество яхт в собственном списке продаж, а также тесно сотрудничает со всеми крупными яхтенными производителями по всему миру.

Для того чтобы купить яхту **Impervious — REAL SHIPS** а также проконсультироваться по любому вопросу связанному с покупкой, продажей, чартером яхт позвоните по телефону **+7(918)465-66-44**.

ОГЛАВЛЕНИЕ

ОГЛАВЛЕНИЕ	2
ХАРАКТЕРИСТИКИ	6
Обзор	6
Основная информация	7
Размеры	7
Скорость, вместимость и масса	7
Размещение	8
Корпус и палуба	8
Информация о двигателе	8
ПОДРОБНОЕ ОПИСАНИЕ	9
Introduction	9
Main Salon	9
Pilothouse	9
Galley	11
Master Stateroom	12
VIP	12
Guest Stateroom	12
Fourth Stateroom or Crew	12
Laundry / Utility Room	13
Upper Aft Deck	13
Hull and Deck Equipment	13
Lower Aft Deck	14
Engine Room; Mechanical Equipment	14
Electrical Equipment	15
Audio/Visual Equipment	16
Other Features/Equipment	16
Exclusions	16
Исключения	17

Отказ от ответственности	17
ФОТОГРАФИИ	18
Towing 26' Mako	18
Tender Rafted at Anchor in Bahamas	18
Salon Forward	18
Salon Settee	18
Salon Forward	18
Salon Aft	18
Dining	19
Dining	19
Pilothouse Seating	19
Pilothouse Helm	19
Helm	19
Pilothouse Stairs to Boatdeck	19
Galley	20
Galley	20
Galley	20
Dual Stainless Sinks	20
Stairs to Salon	20
Galley	20
Galley Alcove Seating	21
Galley to Salon stairway	21
Stairs to Salon from Galley	21
Stairs to Accomodations	21
Master Berth	21
Master Stateroom	21
Master Bath	22
Master Bath to Port	22
VIP Berth	22

VIP Stateroom	22
VIP Stateroom	22
VIP Bath	22
Twin Guest Stateroom	23
Twin Guest Stateroom	23
Twin Guest Bath	23
Fourth Stateroom / Crew Stateroom	23
Fourth Stateroom / Crew Berth	23
Fourth Stateroom / Crew Bath	23
Chain Locker	24
Upper Aft Deck / Grill	24
Upper Aft Deck Seating	24
Upper Aft Deck	24
Covered Walkaround Decks	24
Upper Aft Deck doorway to Salon	24
Raised Bulwark Bows	25
Bow	25
Boarding Stairs	25
Raised Bulwark Walkaround Decks	25
Stairway to Lower Aft Deck	26
Lower Deck to Upper Aft Deck	26
2 ton Crane	26
Master Stateroom Doors to Deck	26
14' Whaler in Bahamas	26
14' Whaler on Boatdeck	26
Electronics Mast	27
Laundry Room	27
Laundry Ironing Board	27
Laundry Folding Table	27

Engine Room Access / Tool Chests	27
Parts / Manuals - Opposite Laundry	27
Starboard Engine	28
Port Engine and PTO	28
Phasor 12.5 kw Generator	28
Engine Room Aft	28
Engine Room Bilges	28
Fuel Manifold	28
Profile 3	29
Engine Room	29
Tender rafted at Home Dock	29
Anchored Bahamas	29
Bow View	29
Bow View	29
Finished Extension	30
Extension Renderings	30
КОНТАКТЫ	31
Контактная информация	31
Телефоны	31
Время работы	31
Адрес	31

ХАРАКТЕРИСТИКИ

Обзор

This 1995/2012 Real Ships was designed by Jay Benford Design Group of Easton, Maryland and fabricated at Custom Steel Boats of Merritt, NC, located on the Bay River in North Carolina. Jay Benford Design has been in business since 1969 and is a highly regarded Naval Architect. Custom Steel Boats has been a family owned, multi-generational business since 1981 and is well known for both commercial and recreational steel and aluminum construction.

Additionally, the 8' hull extension completed in 2012 was accomplished with design drawings from Jay Benford Design Group with the goal of enhancing their original design while maintaining the vessels unique profile.

For the past twelve years, IMPERVIOUS has been the private yacht belonging to the owner of a successful marine repair facility in Ft. Lauderdale, Florida. Impervious features all the luxury and modernization of a new boat. After initially buying the vessel and cruising for two years, the owner knew exactly how he wanted to make IMPERVIOUS the perfect "Island Expedition" vessel.

This was accomplished over a 4-year refit period completed in 2012 with the hull extended 8'. During that time the owner continued using the boat and subsequently upgrading systems to improve performance and functionality with an emphasis on serviceability and ease of maintenance. IMPERVIOUS is unique in its design and layout with multiple decks providing the space of a much larger yacht. This spacious vessel is simple to own and operate for a yacht of this size and class. From the bilges to the boat deck – fore to aft – this boat shows like new.

The refit included installation of a second generator, upgrading stabilizers, re-engineering the exhaust system, new electronics suite with NMEA 2000 integration of original analog system, new watermaker, aft deck refit with integrated fiberglass seating with storage underneath and expanded barbecue grill and rotisserie area. The Salon and Pilothouse had new "African Teak" wood floors installed and "New England Beadboard" ceiling with improved LED lighting. The laundry facility was expanded and crews quarters improved, all new fresh water system, and batteries upgraded to AGM. The galley was modernized with new cabinets, appliances, and improved seating. Also completed in 2012 was painting the entire hull and superstructure, and most significantly, the 8 foot hull extension from designs provided by the original architect, Jay Benford, which added another 500 gallons of fuel capacity. This 8 foot hull extension created a very spacious aft deck entertainment area and very easy access to the now enormous lower aft deck via a custom stainless steel staircase. The present owner tows a 26' Mako center console when traveling the Bahamas and this lower aft deck created by the hull extension makes towing, rafting the tender alongside, and getting people and equipment safely on and off the launch an easy and fun operation.

The high quality of workmanship and equipment that went into the refit of IMPERVIOUS make it a

vast departure from production boats, and accomplish the goal of being a true "yacht" that is very economical to operate and maintain, can be self-sufficient for extended periods of time and can easily and safely tow a large tender for fishing, diving, and shore excursions.

Being experienced Yachtsmen themselves, the owners have created a step by step underway check list that makes operating the yacht a straight forward proposition for even the less experienced boater.

With all systems functional, operational and well documented this vessel is ready to take the next lucky owner on their own "Island Expedition". There is a 26' 1989 Mako Center Console that was completely rebuilt in 2012; new fuel tank, wiring, steering system, and new Evinrude Etec 200 hp twin outboards, that can convey with the yacht if desired for an additional cost of \$60,000.00.

Основная информация

Тип судна: Моторная яхта

Подкатегория: Pilothouse

Модельный год: 1995

Год постройки: 1995

Страна: United States

Размеры

Длина общая: 70' 0" (21.34m)

Длина по ватерлинии: 65' 0" (19.81m)

Ширина: 21' 0" (6.40m)

Макс. осадка: 4' 6" (1.37m)

Трапы: 27' 0" (8.23m)

Скорость, вместимость и масса

Крейс. скорость: 9 Kts. (10 MPH)

Крейсерская скорость поворота: 1600 Kts.

Макс. скорость: 11 Kts. (13 MPH)

Макс. скорость поворота: 2200 Kts.

Водоизмещение: 145000 Pounds

Вместимость воды: 1080 Gallons

Вместимость сточного бака: 110 Gallons **Объем топливного бака:** 2200 Gallons

Размещение

Всего кают: 3

Всего ком. состава: 4

Спальных мест экипажа: 2

Корпус и палуба

Материал корпуса: Steel

Информация о двигателе

Двигатели: 2

Производитель: John Deere

Модель: 6076 AFM

Тип двигателя: Inboard

Тип топлива: Diesel

ПОДРОБНОЕ ОПИСАНИЕ

Introduction

IMPERVIOUS has been lovingly owned and completely updated by the owner of a reputable and successful South Florida yacht repair company. IMPERVIOUS features every comfort and her 4-year refit was achieved between outings aboard by the owner which helped him determine how to improve performance, serviceability and functionality. All systems are operational and maintenance is extremely well documented. IMPERVIOUS is so spacious that she feels like a much larger yacht. Easy to operate and shows like new!

Main Salon

The salon has been totally refitted to provide exceptional comfort with many new features. The custom Ultra leather sofa with easy access storage under cushions and in arms provides seating for lounging as well as for dining. The hi lo coffee table with abalone inlays converts to a 6' dining table seating 8 for dinner.

The L shaped bar / buffet features granite counter top, sink, 52 bottle wine chiller, Manitowoc clear ice machine, cabinet storage, audio visual electronic components (discussed elsewhere) and a pass thru area providing easy transfer of items from Galley to buffet area.

Two swivel leather reclining chairs with footstools and coffee table between provide additional seating plus built in corner cabinetry for additional storage. The entire ceiling has been replaced with "New England Beadboard" painted white awlgrip. The beadboard ceiling center is surrounded with removable teak panels that provide access to mechanical systems and wiring. New Stainless steel fixtures with LED lighting have been added. New African Teak floors were also installed completing the salon refit.

Pilothouse

The Pilot House was refit to incorporate a new electronics suite, upgraded electrical systems and complete cosmetic restoration. Features include new beadboard ceiling with LED fixtures including red night lighting, reupholstered twin Stidd helm chairs and dinette, all new mica and upholstery at instrument panel, upgraded steering and electronic controls.

Pilothouse has access to outside Portuguese bridge deck both port and starboard. A new hydraulic hatch gives access thru the pilothouse to the boat deck. All Pilothouse windows have been treated with V-Kool tinting (new technology) and have window covers.

As part of the overall refit of the vessel an NMEA 2000 network was installed and is currently monitored at the bridge. This new technology provides the ability for electronic monitoring of all

vessel operations as well as critical systems such as fire, high water, etc. Certain critical systems have retained analog redundancy. The system is easily expandable so that additional monitors and / or sensor can be added to this vessel.

List of items currently monitored by the NMEA 2000 network are: All new in 2012

- Engine Functions
- Airmar Weather System
- Engine Room Temperature
- Main freezer temperature
- Water pressure
- Compressed air pressure (operates toilets)
- Main engine fuel flow
- Day tank fuel level
- Port and starboard water level
- Anchor watch
- Depth
- GPS status
- Navigation information
- Rudder angle
- Vessel pitch & Roll
- Bilge pumps
- High water alarm
- Engine room fire alarm
- Engine room smoke detection
- Main engine seawater flow
- Power supply for Video cameras
- Outdoor Temperature

The Electronic Suite is centered around the extremely powerful and fast Raymarine G series processor. This is a remote mounted system displayed through two 19" monitors at the helm. (NOTE: One monitor can be used to watch satellite TV). In addition a Raymarine E series 12" touchscreen multi function display provides additional monitoring as well as redundancy. The vessel has 4 video cameras – two located in engine room, one aft vision at the top of the mast and one monitoring the lower aft deck. (Extremely helpful when towing a large tender).

- Raymarine G Series processor & keyboard
- Raymarine Audio Visual module
- Raymarine 48" Super HD Digital Open Array Antenna
- 2 Raymarine Raystar 125 Puls NMEA/Seataalk GPS
- Raymarine SR6 Sirius Weather/Network Switch
- raymarine DSM30 Sounder Module 600 Watt
- Raymarine Smarpilot X-SOL Autopilot
- Raymarine P70R Pilot Controller
- 2 - Raymarine Cam 100 Day/Night NTSC Camera

- 2 - Raymarine Cam 50 NTSC Dome Camera
- Raymarine Ray 240 VHF radio with intercom in utility room
- Raymarine Smart Wireless Auto Pilot Remote
- Raymarine E Series E120W 12.1" multifunction display
- Raymarine AIS 650 Class B receiver/transmitter
- New digital antennas on mast for WiFi, VHF & AIS
- 2 galaxy 5310R antennas for VHF & SSB
- ICOM M604 commercial VHF with Hailer
- ICOM BC-162 handheld
- Raytheon 152 SSB
- 3 - Raymarine ST70 multifunction displays
- 2 - Maretron DSM250 NMEA 2000 monitors
- 2 - ACER 19" color monitors
- TV controller switch
- Airmar PB200 Weather system

OTHER BRIDGE EQUIPMENT:

- Dirigo magnetic compass
- ZF Electronic controls
- Raymarine Joystick steering control
- Wagner hydraulic steering
- Accusteer hydraulic boost pump
- Raytheon continuous duty autopilot pump
- Wesmar 40hp hydraulic bowthruster
- NIAID 254 stabilizers with 9 sq. foot fins with Wesmar electronic gyro upgrade
- 12" Perko solar ray spotlight
- Dual Buell air horn
- Handheld remote control for engines and bow thruster
- Separate 12V AGM battery bank for bridge electronics with separate charging system and connectible to house bank and windlass bank
- All battery banks monitored at bridge
- V-Kool window tinting

Galley

The galley has been completely refit and is exceptionally large and functional. The full beam amidships galley is well lit with entry doors to main forward deck on Port and Starboard. The Starboard door is double wide to allow removal or entry of appliances or machinery. Refit items includes a new beadboard ceiling with LED lighting and an African Teak Floor, stainless steel handrail, new full size appliances and dinette upholstery and table.

Appliance List:

- Frigidaire 21 cu ft. SS full-size refrigerator with Ice Maker
- Frigidaire professional SS series 220V Electric Range
- Bosch 24" full size SS dish washer *
- SS Kitchenaid trash compactor
- Sharp Carousel undercabinet microwave oven
- Spice Rack, book shelves & SS condiment rack

Master Stateroom

The full width master stateroom features a walk around queen berth with private access to the lower aft deck via French doors. There is generous closet space, a mirrored lighted vanity, flat screen TV, marble tiled bathroom with large shower, granite countertops, and Microphor toilet. The berth has a high-end custom made mattress with folding feature for access to storage underneath. Window treatments and custom bedding are new. There are 4 opening screened port lights. A large window faces aft, which provides remarkable ocean views.

VIP

Walk around queen berth, marble tiled bath with large shower and granite counter tops, Microphor toilet and sink. Ample closet space and under berth storage, two night tables with lamps, two opening port lights with new window treatment and bedding.

Guest Stateroom

Guest stateroom features two twin berths, marble bath with large shower and Microphor toilet, sink located in cabin with granite counter top. Large closet and under bunk storage. Three opening screened port lights, night table between beds with new bedding and window treatments.

Fourth Stateroom or Crew

The fourth stateroom or crew quarters located in the bow of the boat and accessed from the stairway going down forward from the galley was completely refit to optimize space and functionality. The newly installed double berth was designed to also function as a desk if owner desires an office. A cedar lined closet and drawers as well as new wall paneling; ceiling and easy care flooring were added. The bath includes full size fiberglass shower, sink and Raritan fresh water toilet.(NOTE: This toilet is independent of the other heads so as to have an emergency back up in the event of a problem with main system, also the holding tank for the forward head transfers to the main 110 gallon holding tank). The overhead tinted deck hatch has built in shade and screen. Access to the chain / rope locker is located on the forward crew bulkhead. Custom bedding and flat screen TV were also added during refit.

Laundry / Utility Room

The Utility / Laundry Room is located between the engine room and crew quarters. The Laundry area features full size stackable Whirlpool washer and dryer, folding table, built in ironing board, clothes hamper, hanging clothes rod and plenty of shelving. The separate utility area houses a chest freezer (temp connected to NMEA2000 for monitoring) the library of vessel parts, operations and repair manuals, extensive service items such as fasteners, paints, lubricants, spare parts, etc. as well as the air handling unit for the central heating and AC system, and the Isolation Transformer.

Upper Aft Deck

The upper aft deck was changed from the original boat and now provides easy access to the lower aft deck as well as built in seating with sunbrella cushions, fold out table, propane stainless steel American outdoor grill with electric rotisserie and two 25 lb. fiberglass propane tanks. All built ins were constructed from fiberglass with custom-made canvas covers for protection. In addition, an aluminum framed canvas awning was added and dimmable lighting to complete the upper aft refit.

Hull and Deck Equipment

HULL

- Running gear protected by bilge keels
- Entire hull is primed and foamed throughout for acoustical and thermal insulation
- 4 opening windows in salon w/ screens
- Built in pressure wash down system, High pressure pump outlets on main and lower aft decks
- 316L Stainless Steel rub rail
- Marquip tide ride boarding stairs with handrail / on deck storage brackets
- Marquipt side mount boarding ladder

BOW

- Forward deck has 2.5 cubic foot Frigid-rigid refrigerated cooler box
- 2- Fiberglass storage boxes on forward deck, 1 – fiberglass storage box on boat deck, 1- fiberglass storage box on lower aft deck
- 115lb. Danfort anchor hangs in hawse pipe with 250' of 3/8" chain
- Galleymaid windlass
- Fortress FX 55 anchor in deck mount with 200' of 1" nylon anchor rode

BOAT DECK

- Nautical Structures 2 ton crane – overhauled 2012 added wireless remote

- Zodiac Life Raft – Offshore 8 Man
- 1996 14' Boston Whaler w/ 60 Evinrude ETech 2006 motor. Total refit 2006 w/ cover and painted to match
- 3 ton Central Air conditioning system – New 2012 , New Air Handler 2016
- Fresh water spigot on boat deck

Lower Aft Deck

The lower aft deck was the final stage of the IMPERVIOUS transformation. An 8-foot hull extension was added to the existing hull that effectively added 11 feet to the water line. Access is provided from the upper deck by an aluminum removable stairway with 316L Stainless Steel handrails including LED stair lighting. The 1-1/2" stainless steel railings and large bollards designed for mooring of the boat and ease of towing a large center console,(present owner tows a 26' Mako), in addition to the 14' Boston Whaler on the bridgedeck.

Other features include several anchor points which can be used for passerelle, fittings for umbrellas, tie down anchor points, fishing rods, etc. The aft deck also includes sea vision underwater lights, dive compressor, fresh water, high pressure wash down, holding tank pump out, 110 volt receptacle and removable 316L stainless steel boarding/swim ladder and added an additional 500 gallons fuel capacity.

ALSO NOTE: Hard mounted and hard wired Bauer Dive Compressor with on deck tank fill station.

Below deck is accessed with a Freeman watertight hatch. This provides well-lit access to storage, ease for servicing underwater lights, access to bilge pump that is connected to the NMEA 2000 network. The aft deck extension also resulted in an overall improvement in performance and sea keeping ability, as well as improved displacement speed by increasing the waterline length.

Engine Room; Mechanical Equipment

This vessel has been extremely well maintained with every effort made to preserve all the mechanical systems including a detailed shut down procedure of flushing "Salt Away" thru the engines and generators anytime the vessel is out of service for a week or more. The owners keep the engine room doors open and close the vents which basically keeps the engine room air conditioned.

One of the many great things about this boat is its very unique engine room layout - where you can enter and work standing up (Even if you are 6'4") yet easily transition to the lower spaces moving aft. This layout dramatically increases the space in the accommodations which is a tribute to the boats designer. The stand up portion of the engine room has a large work bench which includes vice, drill press, bench grinder, compressed air adequate to run tools, water, and

fabulous lighting. There is nothing that can't be done on this boat while out at sea to make repairs. Improved lighting has made this critically important space easy to maintain.

2 - John Deere 6076 AFM 6 cylinder turbo charged and after cooled diesel - 250 HP Engines – rated at 215 hp continuous duty (M-2 rating; full power, 250 hp @ 2200 rpm 60% of the time) . Engine hours 3100. Cruising at 8.5 - 9 knots @ 1500-1700 rpm burning @ 9 gph the effective range is 2000 nautical miles with a 10% fuel reserve.

- Main engine has emergency bilge pump
- Racor CCV devices on each engine
- Transmissions are twin disc MG507
- New 316L SS exhaust with new fiberglass mufflers
- Tides Marine propeller shaft seals
- Rudders were overhauled during refit with graphite/Teflon packing with greasable rudder logs
- HRO Safari 1400 Gallons per day Watermaker with commercial pre-filters and auto fresh water flush – 280 total hours
- 115V Headhunter fresh water pump
- 12V Galley Maid fresh water pump
- All plumbing through out vessel replaced
- Speedaire 2HP air compressor
- Thomas Ultra Air Pak air compressor
- Dayton Exhaust Blower
- Seward H2850 Hot water heater
- Complete set of tools in tool boxes with work bench, vice, bench grinder, drill press, etc., all of which convey with vessel to the new owner.
- Hose reels – for water, compressed air, work light
- Galley maid type II sanitation device
- 3 – Microphor air accuated toilets
- Raritan Sea Rea fresh water toilet (crew quarter)
- Galley Maid ¾ HP waste pump
- 110 gallon holding tank with Headhunter monitor / pump controller
- Central sea chest (IMPORTANT NOTE: Only 3 below waterline thru-hulls)
- Groco oil change system
- Groco fuel transfer pump with Tuthill flow counter and fuel polishing filter
- Groco fresh water transfer pump

Electrical Equipment

- Heart 3000 Watt inverter
- 3- 470 Amp hour AGM batteries(2016) for inverter/house bank (plus growth area)
- Engines each have 2 PC 1700 Odyssey AGM batteries (2016) for starting and engine room DC supply

- 1 Charles C1123 30 amp battery charger
- Each engine has 80 amp Delco alternator
- 2- Divi-charge devices enabling each engine to charge its battery bank and house bank
- Onan 20 KW Generator in sound shield – 3715 hours
- Phasor 12.5 KW Generator – 970 hours
- 1 Isolation / boost transformer
- 2- PC 2200 Odyssey AGM batteries for windlass with IOTA 30 amp battery charger
- All battery banks have cutoff and parallel switches(safety and redundancy)

Audio/Visual Equipment

- KVH M7 Satellite System with multiple LMB
- 2 – Satellite Receivers – each supplies 2 TV's (4 zones) all with DVR's
- Denon AVR 4311 CI – Surround sound – multiple zone 700 Watt power AMP
- Russound R275 HC Power Amp (booster Amp for boat speaker system)
- Niles Audio SVL6 Speaker selector / volume system
- ADCOM Model ACE-515 AC enhancer
- 5 – True Audio Surround Speaker System
- Polk powered subwoofer built into salon cabinetry
- True Audio 8" outdoor aft deck speakers
- Speakers also in Master stateroom, Galley, Pilot House and Boat deck
- Samsung 46" HD LED 3D SMART flat screen TV
- Samsung 3D blue Ray/CD Player
- Additional TV's with access to satellite system located in Master, Galley, Pilothouse & Crew
- Universal remote control Model MX780

Other Features/Equipment

- New carpet throughout staterooms with 1/32" lead engine room sound insulation under carpet
- All new exterior paint with DuPont MS600
- Bottom taken to bare metal – audio gauged - 8 mils DuPont Colar primer DTM applied during hull extension. Then SeaHawk Tuff Stuff barrier coat applied in conjunction with SeaHawk Biocop TF bottom paint
- Stabilizer Fins dropped, resealed and overhauled
- All 5 bilge pumps replaced during refit
- New 316L water discharge manifolds fabricated and installed port & Stbd.
- All windows removed, resealed with new weather strip

Exclusions

All personal effects and some specialty tools are excluded. (vessel comes complete with tool inventory). Also excluded are specific pieces of Artwork. A comprehensive list of exclusions will be provided at time of sea trial. 26' Mako Center Console does not convey. 14' Boston Whaler with 60 hp Etech outboard conveys with the vessel.

Buyer should assume that items not specifically mention in this specification sheet do not convey.

Исключения

При продаже яхты исключаются личные вещи владельца.

Отказ от ответственности

Компания предоставляет описание судна или яхты добросовестно, но не может гарантировать точность этой информации, а также не ручается за техническое состояние. Покупатель должен проинструктировать своих агентов или оценщиков исследовать представленную информацию более подробно, по собственному желанию. Продажа судна или яхты, изменение цены или снятие с продажи будет происходить без предварительного уведомления.

ФОТОГРАФИИ

Towing 26' Mako



Tender Rafted at Anchor in Bahamas



Salon Forward



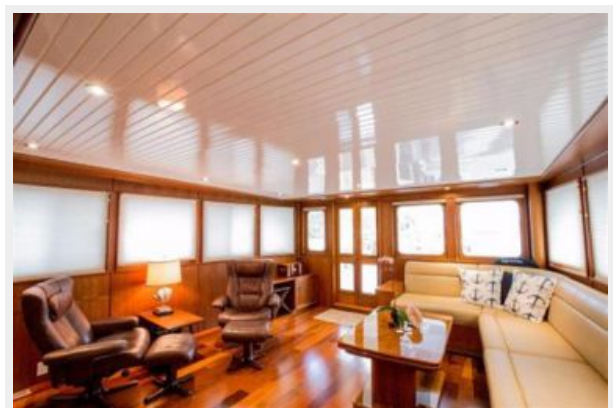
Salon Settee



Salon Forward



Salon Aft



Dining



Dining



Pilothouse Seating



Pilothouse Helm



Helm



Pilothouse Stairs to Boatdeck



Galley



Galley



Galley



Dual Stainless Sinks



Stairs to Salon



Galley



Galley Alcove Seating



Galley to Salon stairway



Stairs to Salon from Galley



Stairs to Accomodations



Master Berth



Master Stateroom



Master Bath to Port



Master Bath



VIP Stateroom



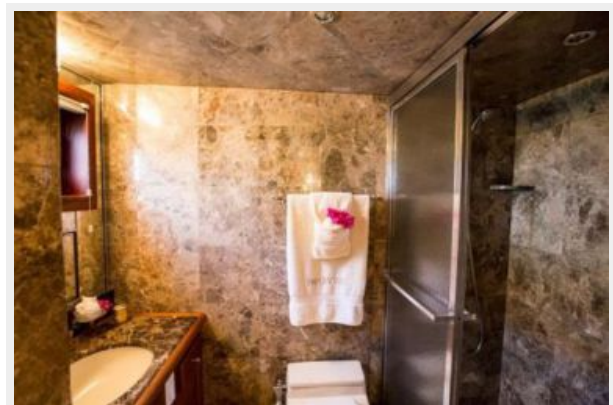
VIP Berth



VIP Stateroom



VIP Bath



Twin Guest Stateroom



Twin Guest Stateroom



Twin Guest Bath



Fourth Stateroom / Crew Stateroom



Fourth Stateroom / Crew Berth



Fourth Stateroom / Crew Bath



Chain Locker



Upper Aft Deck / Grill



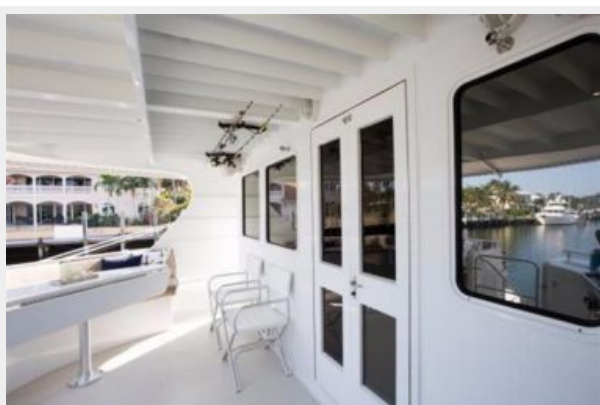
Upper Aft Deck Seating



Upper Aft Deck



Upper Aft Deck doorway to Salon



Covered Walkaround Decks



Raised Bulwark Bows



Bow



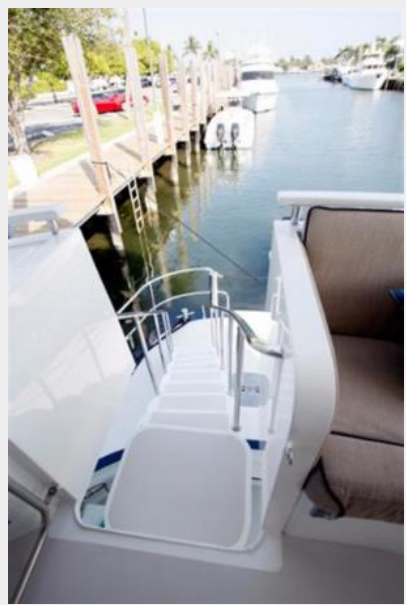
Boarding Stairs



Raised Bulwark Walkaround Decks



Stairway to Lower Aft Deck



Lower Deck to Upper Aft Deck



Master Stateroom Doors to Deck



2 ton Crane



14' Whaler on Boatdeck



14' Whaler in Bahamas



Electronics Mast



Laundry Room



Laundry Ironing Board



Laundry Folding Table



Parts / Manuals - Opposite Laundry



Engine Room Access / Tool Chests



Starboard Engine



Port Engine and PTO



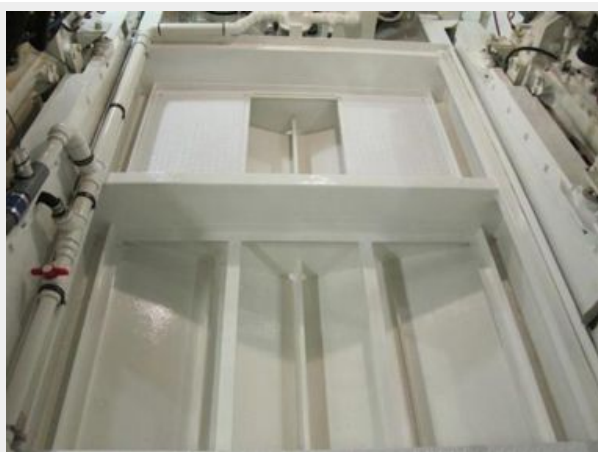
Phasor 12.5 kw Generator



Engine Room Aft



Engine Room Bilges



Fuel Manifold



Engine Room



Profile 3



Tender rafted at Home Dock



Anchored Bahamas



Bow View



Bow View



Extension Renderings



Finished Extension



КОНТАКТЫ

Андрей Шестаков (Andrey Shestakov) – ведущий яхтенный брокер отдела продаж яхт и судов компании Shestakov Yacht Sales Inc. Официальный представитель Shestakov Yacht Sales Inc. для русскоговорящих клиентов в центральном офисе компании в Майами/Форт Лодердейл/Флорида/США.

Контактная информация

Email: **andrey@shestakovyachtsales.com**

Web: **shestakovyachtsales.com**

Телефоны

Краснодарский край: **+7(918)465-66-44**

США, Майами, Флорида: **+1(954)274-4435**

Время работы

Понедельник – Суббота: **9:00 - 21:00**
EDT

Воскресенье: **Закрыто**

Адрес



Harbour Towne Marina, 850 NE 3rd St,
STE 213, Dania, FL 33004