

2014 AZIMUT 54 FLY W/ SEAKEEPER GOOD — AZIMUT



Судостроитель: AZIMUT

Год постройки: 2014

Модель: Моторная яхта

Цена: **ЦЕНА ЯХТЫ ПО ЗАПРОСУ**

Местонахождение: United States

Длина общая: 54' 0" (16.46m)

Ширина: 15' 7" (4.75m)

Макс. осадка: 4' 5" (1.35m)

Крейс. скорость: 27 Kts. (31 MPH)

Макс. скорость: 32 Kts. (37 MPH)

Купить 2014 Azimut 54 FLY w/ Seakeeper GOOD DAY — AZIMUT а также выбрать подходящую вам яхту из нашего каталога яхт вам поможет опытный яхтенный брокер Андрей Шестаков. На сегодняшний день компания Shestakov Yacht Sales Inc. имеет большое количество яхт в собственном списке продаж, а также тесно сотрудничает со всеми крупными яхтенными производителями по всему миру.

Для того чтобы купить яхту 2014 Azimut 54 FLY w/ Seakeeper GOOD DAY — AZIMUT а также проконсультироваться по любому вопросу связанному с покупкой, продажей, чартером яхт позвоните по телефону **+7(918)465-66-44**.

ОГЛАВЛЕНИЕ

ОГЛАВЛЕНИЕ	2
ХАРАКТЕРИСТИКИ	4
Обзор	4
Основная информация	4
Размеры	4
Скорость, вместимость и масса	4
Размещение	5
Корпус и палуба	5
Информация о двигателе	5
ПОДРОБНОЕ ОПИСАНИЕ	6
Options and Upgrades	6
Salon/Dinette/Galley	7
Helm Area	8
Owners Cabin	8
Owners Head	9
VIP Cabin	9
VIP/ Guest Head	10
Guest Cabin	10
Cockpit and Platform	10
Flybridge	11
Engines	12
Electrical System	12
Fuel System	12
Исключения	13
Отказ от ответственности	13
ФОТОГРАФИИ	14
КОНТАКТЫ	16
Контактная информация	16

Телефоны	16
Время работы	16
Адрес	16

ХАРАКТЕРИСТИКИ

Обзор

Features and Highlights Include: **5 Year Volvo Engine Warranty Only 488 Engine Hours SEA KEEPER w/ Additional Control on Fly and Upgraded Generator JOY STICK control for engines and thrusters Hard Top Raymarine Platinum Package Teak Decking throughout Decor Upgrading-Includes wood floor in salon, dinette, helm station Complete AV package w/ HD SAT TV**

Основная информация

Тип судна: Моторная яхта

Подкатегория: Flybridge

Модельный год: 2014

Год постройки: 2014

Страна: United States

Номер регистрации в береговой охране: 1263441

Открытая палуба мостика: Да

Размеры

Длина общая: 54' 0" (16.46m)

Ширина: 15' 7" (4.75m)

Макс. осадка: 4' 5" (1.35m)

Скорость, вместимость и масса

Крейс. скорость: 27 Kts. (31 MPH)

Макс. скорость: 32 Kts. (37 MPH)

Вместимость воды: 155 Gallons

Объем топливного бака: 618 Gallons

Размещение

Всего кают: 3

Всего коек: 6

Спальные места: 8

Всего ком. состава: 2

Корпус и палуба

Материал корпуса: GRP

Материал палубы: Teak

Цвет корпуса: WHITE

Информация о двигателе

Двигатели: 2

Производитель: Volvo

Модель: D11

Тип двигателя: Inboard

Тип топлива: Diesel

ПОДРОБНОЕ ОПИСАНИЕ

Options and Upgrades

- Twin Volvo D11 Engines
- Sea Keeper Stabilizer (Includes Upgraded Generator)
- Barbecue on Flybridge
- 2 Cockpit Chairs
- High Gloss Teak Cockpit Table
- Deluxe Salon Door Curtain Sliding on Rails
- Hard Top with Opening Center
- Hi-Lo System For TV
- Ice Maker in Cockpit
- Mosquito Nets for Portholes
- One Glendenning Cable Master
- Raymarine Platinum Package
- Refrigerator in Cockpit
- Refrigerator on Flybridge
- Safe in Master Cabin
- Salon Ottoman with Table
- Set of Linen
- Set of Linen - Sofa bed in Salon
- Sofa/Bed in Salon
- Sunbathing Cushions on Aft Flybridge
- Sunbathing Cushions on Bow
- Teak on Flybridge
- Teak on Side Decks
- Two Flood Lights installed on Aft Flybridge
- Washer/Dryer Combo Unit
- Wooden Floor in Salon, Dinette and Helm Station
- ADVANCED PACK:
 - Double Racor Filters for Main Engines
 - Joystick Control for Engines and Thrusters
 - Spare Conduits Connecting Engine Room/Wheel House/Radar Arch
 - Water Maker Predisposition
 - Electric Mooring Winches in Cockpit
 - Openable Scenic Windows In VIP Cabin
 - Additional Search Light Control At Lower Helm
- Decor EXCLUSIVE
- Meile Appliances
- Gannenu Cooktop and Miele Microwave Combo

- Chain Counter Control at Main Helm
- 2ND Seakeeper Control Station on Flybridge
- Decor Upgrading
- Fwd Sunpad Cover
- Table Cover
- Complete AV Package with HD SAT TV
- Full Flybridge Set

Salon/Dinette/Galley

SALON AND DINETTE

- Cupboards in Whitened oak
- Bargeboards and window frames in matte fiberglass
- Flush-mounting lamp in the column dividing the salon from the galley
- Cupboard on starboard side
- 1 "C" shaped sofa for 4 people on the port side of the saloon-standard smooth fabric covering
- 1 "C" shaped sofa for 4 people on the starboard side of the dinette-standard smooth fabric covering
- Rectangular table in dinette for 6 people. The central part of the top can be removed and stored in the compartment below the aft sofa cushions.
- TV system with aerial, sockets in salon and owner's cabin.
- Below deck accommodation ladder with carpeted steps ceiling and wall upholstery: 2 tone fabric
- Roman blinds for stern windows and sliding blind for salon door
- Carpeted floor

GALLEY

- Floor in oak with tobacco-colored staved finish
- Silestone blanco city worktop and splashback
- Glass ceramic range with 3 aligned plates and pan holder
- Hood installed in the wall unit above the range, with active carbon filters (recirculation)
- Microwave Oven + Grill
- Sink
- Fridge + upright freezer WAECO 220 I
- Electric window

CORRIDOR

- Below deck access corridor with carpeted floor
- Spotlight lighting
- Beige bulwark upholstery

- Corridor grabrails

Helm Area

- Electric helm seat with 2 places (reversible seat for use with dinette) adjustable seat and sprung backrest
- Electric window
- Adjustable steering wheel

The wheelhouse includes:

- Bow thruster controls
- Electronic remote controls
- Trim tab switches
- Trim tab indicators
- Bow anchor winch activation
- Horn, navigation lights, wiper switches
- Activation of bilge pumps
- Side window opening
- Emptying of black and gray water tanks
- Engine room ventilation
- Cigarette lighter socket
- Shore power socket indicator light
- Chain washing pump switch
- Fuel, gray water, fresh water tank level gage
- Engine start-up
- Rev counter
- 1 engine data display
- Ammeters
- Alarm indicator lights

Owners Cabin

- Located mid-ship
- Diagonal double bed with headboard on starboard side. Manual tip-up mechanism with storage space below
- Oak headboard that can be opened to access the cabinet
- Vanity table with sofas on the left side
- 2 wall units
- Drawer unit with 1 drawer
- 2 wardrobes with hanger bars
- 1 wardrobe with shelves
- Shelf around the bed

- Spotlights and lighting strips on ceiling
- 2 openable portholes (rectangular portholes inserted in the window)
- 3 + 3 rectangular hull windows
- Hatchway: emergency exit from ceiling panel above the bed
- Direct access to the head from the corridor leading to the owner's cabin with internal stairs
- Mirror on the vanity table
- Mirror in the stern wardrobe
- Wooden venetian blinds on the windows
- Fabric wall upholstery and oak wood paneling
- Fabric ceiling panels
- TV system in owner's cabin

Owners Head

- Located prior to the owner's cabin on the port side (under galley). Access from owner's cabin (via ladder) Oak top and oval washbasin cognac - Vetro Freddo
- TECMA toilet
- Chromed mixer tap
- Separate shower enclosure; flat shower door
- Shower column and seat in matte ABS
- Wall unit with 2 sliding panels above washbasin
- Ivory-colored ceiling panels
- Lighting: ceiling light on wall unit, and spotlights in the shower
- 1 openable porthole with wooden Venetian blind
- Floor in oak; with granite in solid wood
- Head extractor: forced intake (from the shower ceiling panel)
- Air conditioning delivery from owner's cabin

VIP Cabin

- Located in the bow
- Fixed double bed
- Fixed oak headboard
- 2 wall units above the windows
- 1 wardrobe with hanger bar and shelves on the starboard stern wall
- 1 wardrobe with hanger bar on port stern wall
- Shelves on bulwark (bed side)
- 2 under- bed lockers
- 2 wall lights on headboard
- Spotlights on ceiling
- Direct access to guest head
- Carpeted floor

- Windows
- Hatchway
- Wooden Venetian blind
- Fabric bulwark upholstery
- Ceiling panels: oak portal, matte ivory GRP ceiling panel with fabric panels above the bed

VIP/ Guest Head

- Positioned abaft of the VIP cabin on the port side
- Direct access from the VIP cabin or from the corridor
- TECMA toilet
- Oak top and oval washbasin cognac (brown) Vetro Freddo
- Chromed mixer tap
- 3-door round shower, not separated
- Shower column in matte ABS
- Wall unit with 2 sliding panels above washbasin
- Lighting: ceiling light on wall unit, and spotlights in the shower
- 1 openable round porthole with wooden Venetian blind
- Floor in oak, with grating in solid wood
- Natural air extraction
- Air conditioning delivery from VIP cabin

Guest Cabin

- Located on starboard side
- 2 single beds, fixed
- Headboard with oak panels
- 1 central nightstand between the beds (with openable compartment)
- 1 wardrobe with hanger bar and shelves
- 3 under bed lockers
- Ceiling panels: oak portal and ivory GRP ceiling panel with fabric panels
- Fabric wall upholstery (with oak and fabric panelling)
- 1 openable round porthole
- Wooden Venetian blind
- Flooring: carpet
- Lighting: spotlights
- 2 wall lights on headboard

Cockpit and Platform

COCKPIT

- Cockpit access via stainless steel and plexiglas gate
- Aft stainless steel left/right chock
- vertical double door in stainless steel and tempered glass
- 4-seater C-shaped cockpit bench in GRP, integrated in deck
- Cockpit bench cushion
- 1 locker in the port deckhouse column
- Engine room access via door in cockpit floor
- Teak floor (excluding side walkway access steps)
- Curved handrail on stern platform
- Handrail on flybridge access stairs
- Handles on the cockpit bench armrests
- Lighting: spotlights in cockpit ceiling panel.
- Shower head with hot and cold water.

PLATFORM

- Stern platform lights
- Teak floor
- Stainless steel telescopic swimming platform (4 steps)

Flybridge

- Ladder from cockpit, port side.
- Teak
- Non slip floor
- Access door: water tight in aluminum and plexiglas
- Bow Sundeck
- "L" shaped sofa joining with the sundeck
- Teak table with central stainless steel leg
- 1 bow locker (in front of instrument board)
- garbage bin in fly cabinet
- Washbasin (cold water)
- manual spotlight
- stainless steel light mast
- self-inflating life raft : flybridge-astern, on port side
- 2 loudspeakers connected to the salon radio

The wheelhouse includes:

- Main engine instruments (thermometer, rev counter)
- Alarm indicator lights
- Engine start up controls
- Bow anchor winch controls
- Horn control

- Trim tab control
- Bow thruster control
- Adjustable spot activation
- 12V socket
- Chain meter counter

Engines

- Volvo Penta
- D11 725 mHp
- In Line, 6 cylinder, diesel engine

Electrical System

- Shore powered power supply
- Onboard voltages:

60Hz - Built For the US Spec

24V DC

12V DC

Batteries

- Set of six 24V 270Ah batteries, for services
- Set of four 24V 180Ah batteries, for engines
- Battery 12V 70Ah, for generator"
- Electronic battery charger 50A (220 / 110V)
- Battery charger for generator 10A (220 / 110V)
- STDAC sockets: EUtype
- DC sockets: cigarette lighter type (wheelhouse, flybridge)

Fuel System

- 2 connected tanks of 1170 l each, in aluminum
- Electronic gauge in wheelhouse (port tank)
- Optical gauge on tank (starboard tank)
- 2 single filters (decanter) for engines + 1 filter for generator
- 2 inlets on walkway
- 2 vents on bulwark

- Remote diesel shut off via 24V solenoid valve
- Fuel drawing tap on port tank

Исключения

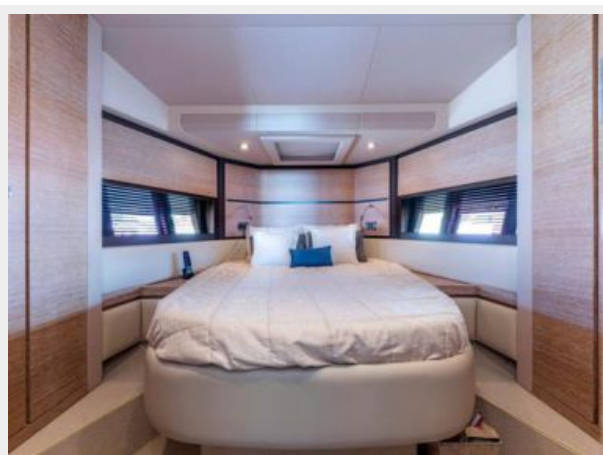
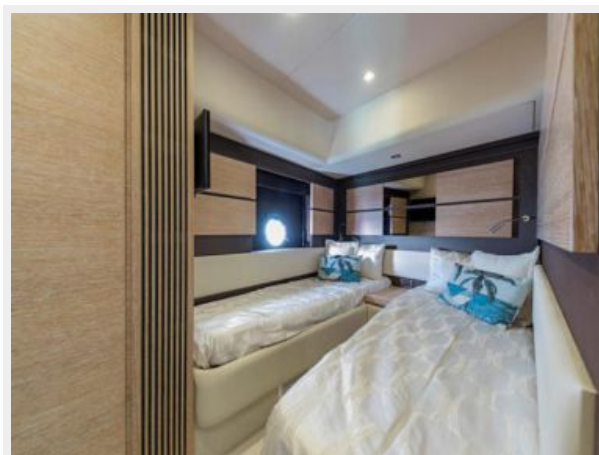
При продаже яхты исключаются личные вещи владельца.

Отказ от ответственности

Компания предоставляет описание судна или яхты добросовестно, но не может гарантировать точность этой информации, а также не ручается за техническое состояние. Покупатель должен проинструктировать своих агентов или оценщиков исследовать представленную информацию более подробно, по собственному желанию. Продажа судна или яхты, изменение цены или снятие с продажи будет происходить без предварительного уведомления.

ФОТОГРАФИИ





КОНТАКТЫ

Андрей Шестаков (Andrey Shestakov) – ведущий яхтенный брокер отдела продаж яхт и судов компании Shestakov Yacht Sales Inc. Официальный представитель Shestakov Yacht Sales Inc. для русскоговорящих клиентов в центральном офисе компании в Майами/Форт Лодердейл/Флорида/США.

Контактная информация

Email: andrey@shestakovyachtsales.com

Web: shestakovyachtsales.com

Телефоны

Краснодарский край: **+7(918)465-66-44**

США, Майами, Флорида: **+1(954)274-4435**

Время работы

Понедельник – Суббота: **9:00 - 21:00**
EDT

Воскресенье: **Закрито**

Адрес



Harbour Towne Marina, 850 NE 3rd St,
STE 213, Dania, FL 33004