

MY MY MY — AZIMUT



Builder: AZIMUT

Year Built: 1999

Model: Motor Yacht

Price: PRICE ON APPLICATION

Location: United States

LOA: 100' 0" (30.48m)

Beam: 21' 0" (6.40m)

Cruise Speed: 16 Kts. (18 MPH)

Max Speed: 23 Kts. (26 MPH)

Our experienced yacht broker, Andrey Shestakov, will help you choose and buy a yacht that best suits your needs **MY MY MY — AZIMUT** from our catalogue. Presently, at Shestakov Yacht Sales Inc., we have a wide variety of yachts available on our sale's list. We also work in close contact with all the big yacht manufacturers from all over the world.

If you would like to buy a yacht **MY MY MY — AZIMUT** or would like help answering any questions concerning purchasing, selling or chartering a yacht, please call **+1(954)274-4435**

TABLE OF CONTENTS

TABLE OF CONTENTS	2
SPECIFICATIONS	4
Overview	4
Basic Information	4
Dimensions	4
Speed, Capacities and Weight	4
Accommodations	4
Hull and Deck Information	4
Engine Information	5
DETAILED INFORMATION	6
Description	6
Accommodations and Layout	6
Galley and Laundry Equipment	7
Mechanical and Engine Equipment	8
Communications and Navigation Equipment	8
Pilothouse	8
Aft Deck	8
Forward Deck	9
Tenders and Toys	9
2018 Upgrades	9
Recent Upgrades	9
Exclusions	10
Exclusions	10
Disclaimer	10
PHOTOS	11
CONTACTS	19
Contact details	19
Telephones	19

Office hours	19
Address	19

SPECIFICATIONS

Overview

Basic Information

Category: Motor Yacht	Model Year: 1999
Year Built: 1999	Refit Year: 2014
Country: United States	Fly Bridge: Yes

Dimensions

LOA: 100' 0" (30.48m)	LWL: 87' 0" (26.52m)
Beam: 21' 0" (6.40m)	

Speed, Capacities and Weight

Cruise Speed: 16 Kts. (18 MPH)	Max Speed: 23 Kts. (26 MPH)
Water Capacity: 595 Gallons	Fuel Capacity: 3646 Gallons

Accommodations

Total Cabins: 5	Sleeps: 10
-----------------	------------

Hull and Deck Information

Hull Material: GRP

Engine Information

Engines: 2

Manufacturer: MTU

Model: 16V2000 TE 90

Engine Type: Inboard

Fuel Type: Diesel

DETAILED INFORMATION

Description

MY MY MY is one of the only two 5 VIP staterooms ever built. She is the most stunning Azimut Jumbo delivered to America. MY MY MY has been refurbished in 2014 with new luxurious furnishings and each cabin is tastefully decorated with all the comforts and amenities to make your stay truly relaxing and enjoyable. One of the most notable features are her 3 VIP cabins. One being on the Main Deck (2nd Master Stateroom) with wheel chair and full handicap access. 2 Queens and a Twin down below. The yacht features walk around decks a very spacious, relaxing "toy free sun deck. MY MY MY is truly the best value under the sun for 10 guests. She was built with full American compatibility in mind. An American captain spent a year in Viareggio, Italy following the build. She has an Atlas shore converter, American A/C, American watermaker, etc. This is a big advantage as spare parts are easy to find anywhere. MY MY MY is pure classical elegance and sophistication but with a relaxed formality. The hand rubbed cherry wood throughout the yacht is immaculate. The bathrooms and internals look like new showing the very low usage of the yacht. Lalique door handles and fittings throughout. MY MY MY from 2001-2013 had only 150 hour usage but had an open checkbook maintenance scheduled program. The main engines have only 2650 hours. She was meticulously maintained full time by the same Captain for over 12 years. Mechanically, the yacht has had a rigorous maintenance schedule on the A/C filters, water filters, sea strainers cleaning, pumps, hydraulics.

Accommodations and Layout

Main Deck: The salon is truly the showcase of this stunning vessel. The comfort of Italian leather couches and soft fabrics give you the option to be formal or relaxed as you desire. There is an 8-seat table of the finest wood with an additional insert to extend for 10 guests. Two beautiful cabinets provide a discrete separation into the main salon area. There are two sofas for each side comfortably for seating 10 people. There are two extra leather bucket seats which are the most comfortable on the yacht. A full-service bar is located aft on the port side, complete with brand new refrigerator, ice maker and abundant storage. The bar counter top has been lowered so the people sitting in the main salon have an uncluttered clear view out of the yacht to the aft deck table. The bar and TV cabinets create an atmosphere that the main salon is a discrete room. The entertainment system features satellite new flat TV/CD/Blu Ray all with Bose surround sound. Access to the aft deck is through the full width curved glass doors. The galley is located on the main deck to port, forward of the dining area. Many custom features are provided to add serving and preparation space, including pull out counters and recessed storage areas. All refrigeration was replaced with US parts and custom counter space and storage was added. The day head is located on the port side forward of the main salon, this beautiful day head has gorgeous marble tops and floors, centralized air extracting system, Sealand WC system, cabinet, mirror and unique Lalique fittings. The Master Stateroom is located forward. This stateroom has a very special feature, being that all doors are big enough for wheelchair access including the ensuite bath that has a large shower with seating and custom cabinets. A California King bed

with built-in nightstands and reading lights are provided. A vanity is located on the starboard side with drawers and storage lockers. Hanging lockers are found on the port and starboard sides. A settee is located on the port side. Entertainment system features TV/DVD, iPod station and full sound system. Lower Deck: The second Master Stateroom is located on the lower accommodation deck aft. It features a King bed with built-in nightstands and reading lights, a large walk-in closet aft and custom chest of drawers and linen shelves to port. The vanity is to starboard with custom cabinets and drawer space. A settee is located port with custom cabinets and bookshelves. Entertainment system includes new 28" flat screen TV/BluRay, iPod station and full surround sound system (July 2014). Large and roomy with tasteful deeper cherry wood furnishings. Large dressing room for his and hers on wood panels are exquisite. The ensuite bath has an oversized shower, his and hers marble sinks and custom cabinets. The two identical Twin Staterooms are located mid-ship. Each features twin beds, hanging lockers, custom cabinets and ensuite baths. Both staterooms convert to Double beds if desired. Both also feature new 22" flat screen TV/BluRay, iPod station and full surround sound system (July 2014). Essentially, this is a five-stateroom yacht with double bed configuration, something usually only found on yacht 130' and above. Storage under the beds is standard throughout. The finishing of the storage components under the mattresses is the same high quality found throughout the yacht. The VIP Stateroom is located forward and features a Queen bed with built-in nightstands, ready lights and custom cabinets. A vanity is located to starboard and a large closet is located on the starboard side. Bookshelves and the entertainment system are to port. Entertainment system includes new 28" flat screen TV/BluRay, iPod station and full sound system (July 2014). The ensuite bath includes shower, custom cabinets and marble sink. Flybridge: The wide Flybridge is accessible through the internal staircase in the wheelhouse and the external staircase in the aft cockpit. Open with bimini top and is divided into two sections: U-shaped dining for 10 aft and casual seating for cocktails forward. Full wet bar with sink, brand new refrigerator, 2 new ice makers and BBQ. Forward and to starboard there is a cocktail table with L-shaped seating. Walking aft, there is a wet bar with refrigerator, ice machine and electric grill. Additional refrigeration and freezer units are strategically placed on port and starboard respectively. The Flybridge deck provides ample space to bask in the sun on padded sun areas aft and 4 chairs with teak flooring surface. The Flybridge is fitted with full instrumentation at the helm station. The Helm station is protected by canvas covers and fitted with a Bimini top. Access to the pilothouse is through the sliding glass hatch to starboard. The perimeter is protected by stainless railing, making this a child friendly area. Access to the lower aft deck is through the companionway on the port side. Continuing aft, a Bimini top covers the Hi-lo table and C-shaped seating for 10. A padded sun area is aft and 4 steamer chairs with cocktail tables allow for entertaining at its finest.

Galley and Laundry Equipment

The galley is located on the main deck to port, forward of the dining area. Many custom features are provided to add serving and preparation space, including pull out counters and recessed storage areas. All refrigeration was replaced with US parts and custom counter space and storage was added. Main Galley Equipment Four burner stove and oven Convection

oven/microwave Dishwasher Double sink Marble countertops Double reach-in refrigerator and freezers The laundry facility is located in the crew quarters and features a stackable Maytag washer/dryer.

Mechanical and Engine Equipment

Twin MTU 16V2000 TE 90 1800 hp 2930 hours port (March 2017) 2932 hours starboard (March 2017) AZ BW 255 VP V-Drive Gearbox AISI 316 steel rudders 1 x Kohler Generator 60kw / 7968 hours (March 2017) 1 x Kohler Generator 32kw / 4,705 hours (March 2017) Bow thruster fully rebuilt (December 2014) 1 x 125 AMP, 3-Phase, 380V/220V shore power inlet with Atlas Converter Domestic WC system (New pumps December 2014) Cruisair A/C 150,000 BTU 4 x Electro-hydraulic units in the aft peak for rudders, gangway, trim tabs, transom launching/recovering systems for tender and jet skis. Each of these 24V with own oil tank and own circuit 1 x fresh water tank / 595 gallons 1 x Grey water tank / 340 gallons 1 x Black water tank / 340 gallons

Communications and Navigation Equipment

Raytheon 72 mile radar Raytheon 48 mile radar Furuno GPS Navigator New Garmin Navigation System 5212 w/depth sounder and all charts for Bahamas and greater Caribbean Raytheon Ray Chart Robertson AP 20 Autopilot Raytheon RL 70 Simrad VHF Radio Simrad R135 Mk 2 rudder angle indicator Autohelm Master View speed and depth log Sony Vaio computer with Maptech charting software Koopnautic/Vosper stabilizer roll control system Robertson AP 20 autopilot remote Icom IC 725 SSB radio 2 x Standard Horizon VHF Flybridge electronics are the same New Inteleron navigation system (October 2014) 4 Station CCTV camera system in pilothouse Wifi Satellite phone Satellite TV Cell phone

Pilothouse

Access through staircase from lobby Two seats against aft bulkhead Area for paper charts and chart drawer Cabinets Staircase to access Flybridge New main engine controls with synchronizer Main engines and reversing gear gauges Instruments for navigation Electrical panel Rudder angle indicator Trim tabs control Compass Wipers, horn, navigation lights, anchor, winches, search light controls Fire extinguisher electro-pump control Maneuvering intercom connecting flybridge, main deck and engine room Fuel electric pump, grey and black water electric pump, bilge electric pump controls High bilge water level alarm Fuel level gauge Fresh water gauge Dimmer for console lights Teak flooring

Aft Deck

Stainless steel double doors open to combine the salon with the aft deck, this space features

Alfresco dining for eight to ten guests and boats a 48" flat screen. To port is access to the flybridge deck and aft, access to the swim platform/lazarette. The lazarette houses a tender and jet ski and provides ample storage space for all your toys and accessories. The massive swim platform once open provides water's edge access for all your water sports fun! The stern includes: 2 x Electrical wrapping winches 2000W 24 Wider staircase in fiberglass w/teak steps from aft cockpit to flybridge Electro-hydraulic retractable gangway in stainless steel and teak Transom w/electro-hydraulic opening convertible into a wide swim platform Teak on swim platform when transom door is open Hatch to access to garage on the floor of the aft deck Water shore connection on the transom Hand shower on transom (starboard side) Shore power inlet in the bulwark

Forward Deck

Comfortable, casual pad seating for 2 – 4 plus two sunbeds that recline 2 x 3500W 24v reversible winches Anchor winches control 2 x 210 lb anchors with 13mm chain and 325' length Chain storage with drain and washing chain pump Built-in stainless steel bow protection Glass and stainless steel hatch to access crew quarters with SS handrails Two side peaks on superstructure 3 x electric windshield wipers Fresh water hose connection for wash downs

Tenders and Toys

Brownies diving compressor + 4 air tanks (Re-certified December 2013) 1 x 3-man doughnut (December 2013) New life vests 6 diving/snorkeling sets Assorted fishing equipment "Aussie" Beach club

2018 Upgrades

New GE Appliances installed Kohler 50KW Generator - Complete Rebuild New Kohler 25KW Generator New MTU Engine Electronics (Bridge) Replace Props Remove and Reinstall Shafts Replace Cutless Baring New Soft Goods as follows: - New custom dining table covering (Salon) - New custom dining table covering (Back Deck) - New Captain Couch (Bridge) - All new custom sofa/sun beds with backs (Aft Deck) - New sunpads with headrest includes track and zipper (3) for Bow - Complete new couch and dining chairs recover (leather)

Recent Upgrades

New chiller, domestic - March 2014 New bottom paint job - February 2017 New transom extension to provide extra lift Bow thruster fully rebuilt - December 2014 All zinc replaced - February 2017 Prospeed on shafts - February 2017 All toilet pumps replaced - December 2014 New membranes for watermakers - December 2014 New anchor windlass motor - December 2014 Sea cooler serviced and cleaned - December 2014 Teak decks sanded and teak wondered

- December 2014 All new canvas - 2013 New black water pumps - 2013 Yacht paint job w/Awlgrip - 2011 Yacht waxed and polished every 6 months New life rafts (only need to be serviced every 3 years) – December 2014 All firefighting & safety equipment serviced – December 2014 New EPIRB's – 2016 New TV mount and TV for Flybridge - February 2017 3 x New icemakers – December 2014 New carpet throughout – 2012 All new flat screen TV's throughout except 2nd Master Stateroom All rooms w/new Blue-Ray players, iPod stations – July 2014 All Wifi compatible New marble floors in the bar

Exclusions

Tender Jetski Dive Equipment

Exclusions

Owner's personal belongings.

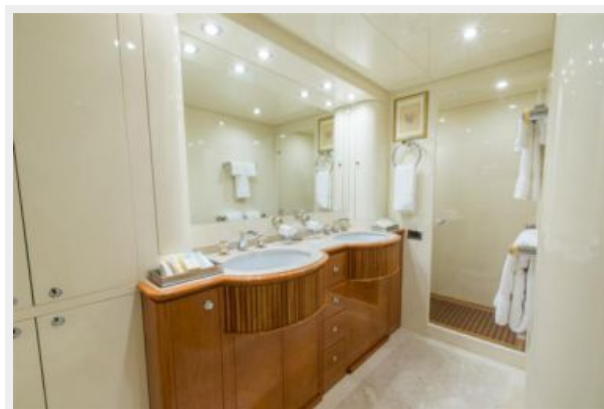
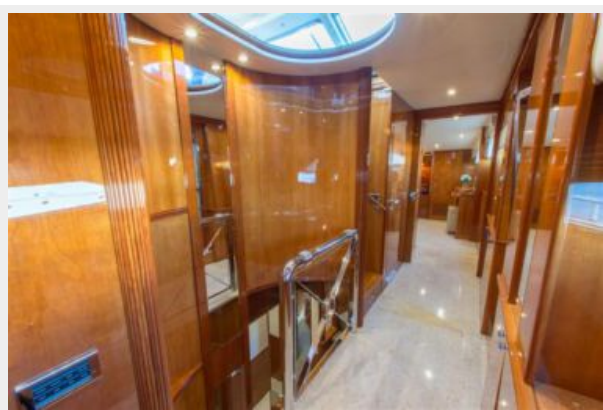
Disclaimer

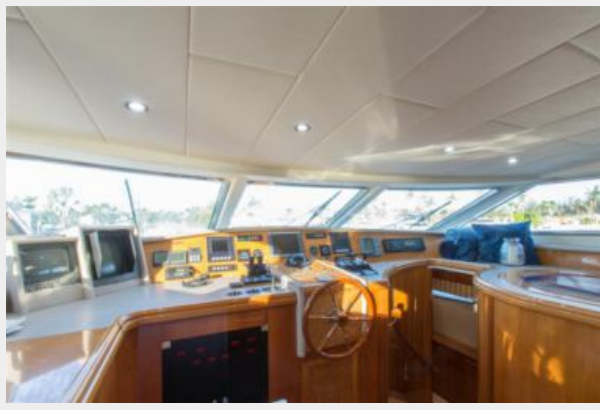
The Company offers the details of this vessel or yacht in good faith but cannot guarantee or warrant the accuracy of this information nor warrant the condition of the vessel. A buyer should instruct his representatives, agents, or his surveyors, to investigate such details as the buyer desires validated. This vessel or yacht is offered subject to prior sale, price change, or withdrawal without notice.

PHOTOS

















CONTACTS

Andrey Shestakov, leading yacht broker of the sales department of Shestakov Yacht Sales Inc. Shestakov Yacht Sales Inc., the official representative of the Miami/Fort Lauderdale FL headquarters.

Contact details

Email:
andrey@shestakovyachtsales.com

Web: shestakovyachtsales.com/en/

Telephones

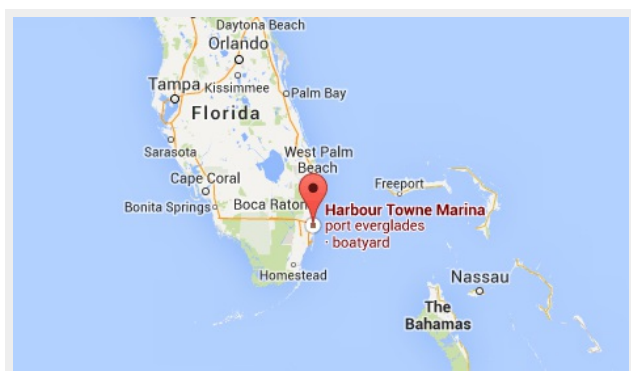
USA: **+1(954)274-4435**

Office hours

Monday – Saturday: **9:00 - 21:00 EDT**

Sunday: **closed**

Address



Harbour Towne Marina, 850 NE 3rd St,
STE 213, Dania, FL 33004