

OUR TRADE — PRINCESS YACHTS



Builder: PRINCESS YACHTS

Year Built: 2016

Model: Express

Price: PRICE ON APPLICATION

Location: United States

LOA: 48' 0" (14.63m)

Beam: 13' 6" (4.11m)

Min Draft: 3' 9" (1.14m)

Cruise Speed: 28 Kts. (32 MPH)

Max Speed: 31 Kts. (36 MPH)

Our experienced yacht broker, Andrey Shestakov, will help you choose and buy a yacht that best suits your needs **OUR TRADE — PRINCESS YACHTS** from our catalogue. Presently, at Shestakov Yacht Sales Inc., we have a wide variety of yachts available on our sale's list. We also work in close contact with all the big yacht manufacturers from all over the world.

If you would like to buy a yacht **OUR TRADE — PRINCESS YACHTS** or would like help answering any questions concerning purchasing, selling or chartering a yacht, please call **+1(954)274-4435**

TABLE OF CONTENTS

TABLE OF CONTENTS	2
SPECIFICATIONS	5
Overview	5
Basic Information	5
Dimensions	5
Speed, Capacities and Weight	5
Accommodations	6
Hull and Deck Information	6
Engine Information	6
DETAILED INFORMATION	7
Accommodations	7
Galley	7
Master Stateroom-Full Beam	7
VIP Stateoom- Forward	8
Helm	8
Electrical	9
Mechanical	9
Cockpit	9
Deck	10
Exclusions	10
Disclaimer	10
PHOTOS	12
Salon	12
Salon	12
Salon TV	12
Galley	12
Galley	12
Master Stateroom	12

Master Stateroom	13
Master Stateroom	13
Master Stateroom	13
Master Stateroom	13
Master Stateroom	13
VIP Stateroom	13
VIP Head	14
VIP Stateroom	14
VIP Head	14
Helm	14
Helm	15
Engine Room	15
Engine Room Gnerator	15
Engine Room	15
Mechanical	15
Mechanical	15
Upper Cockpit	16
Upper Cockpit	16
Upper Cockpit	16
Upper Cockpit	16
Upper Cockpit	16
Upper Cockpit	16
Trunk	17
Trunk	17
Bow Deck	17
Bow Cushion	17
Aft Sun Pads	17
Storage Covers	17
Sun Roof	18

Bow Profile	18
Bow Profile	18
Portside Profile	18
Portside Profile1.JPG	18
Portside Profile	18
Starboard Side	19
Stern	19
Layout	19
Layout	19
Stern	19
Interior Layout	19
Side Walk.JPG	20
Starboard Side.JPG	20
CONTACTS	21
Contact details	21
Telephones	21
Office hours	21
Address	21

SPECIFICATIONS

Overview

"OUR TRADE" is a beautiful 2016 Princess V48 Open that has been professionally maintained from day one and it shows like new!! With LOW HOURS Volvo IPS and Joystick maneuverability this boat is perfect for an owner operator. With low fuel consumption and the performance of the IPS this vessel will not let you down.

Some of the UPGRADES are listed below, please see the full details of all the options:

- Walnut with Satin Finish Interior
- Volvo Extended Warranty until June 2021

Motivated Seller, Trade-In's Welcome, Make an Offer!

Basic Information

Category: Express

Sub Category: Motor Yacht

Model Year: 2016

Year Built: 2016

Country: United States

Registration #: 1266950

Vessel Top: Hardtop

Cockpit: Yes

Dimensions

LOA: 48' 0" (14.63m)

Beam: 13' 6" (4.11m)

Min Draft: 3' 9" (1.14m)

Speed, Capacities and Weight

Cruise Speed: 28 Kts. (32 MPH)

Max Speed: 31 Kts. (36 MPH)

Displacement: 39000 Pounds

Water Capacity: 96 Gallons

Holding Tank: 60 Gallons

Fuel Capacity: 330 Gallons

Accommodations

Total Cabins: 2

Total Berths: 3

Sleeps: 6

Hull and Deck Information

Hull Material: Fiberglass

Engine Information

Engines: 2

Manufacturer: Volvo

Model: D-6 IPS600

Engine Type: Inboard

Fuel Type: Diesel

DETAILED INFORMATION

Accommodations

U-shaped settee with fixed top table

Cocktail bar

Refrigerator

Electric sun roof

Triple SS framed sliding doors to cockpit

Radio/CD/MP3 with salon & cockpit speakers

Lower Salon

Salon table with fill in cushions for extra berth

29" TV with DVD

Galley

3 Burner cooktop

Dish washer

Avonite counter tops

Stainless-steel sink

Combination microwave/conventional oven

Full size refrigerator/freezer

L-settee with table that converts to berth

Complete set of cutlery, china and glassware for 6 people

Master Stateroom-Full Beam

Custom pillow and throws package

Queen berth with storage below

Hanging locker & shelves

Drawers and storage lockers

Love seat

Panoramic trapezoidal windows with opening ports lights

32" TV with DVD

En Suite head with shower and Avonite countertops.

VIP Stateoom- Forward

Scissor berths

Hanging locker

Overhead hatch with screen

Storage lockers

Opening portlights

22" TV with DVD

En-suite head with shower & Avonite countertops

Helm

Helm station with 2 helm seats

Joystick docking control

Raymarine E165 16" GPS color chart plotter

HD color radar 4KW - 72 mile

Autopilot

VHF Radio with '8 antenna

Depth sounder

Electrical

Voltage stabilizer transformer

Glending cable master - 50 amp 240 volt 75' long

24 volt system

4 x heavy-duty batteries for engine starting

4 x heavy-duty auxiliary batteries

40 amp 24v float battery charger

Battery paralleling system (for engine start back-up)

Remote battery master switches with control switch at main panel

4 blue underwater lights

Mechanical

Twin Volvo IPS 600 @ 435hp each, with extended warranty to June 2021

Electronic engine controls

Joystick docking/maneuvering system

Volvo active corrosion protection system

Interceptor trim tabs with indicators

Onan 13.5 KW generator 321 hours

Oil change system for engines and generator

Hydraulic Swim Platform

Cockpit

24,000 BTU A/C system

Trunk/Dinghy Storage

Aft sun pad

Teak decking

U-shaped settee with folding teak table

Ice maker

Overhead & low level courtesy lights

Refrigerator

Engine room access hatch

Life raft / storage locker

Hydraulic swim platform in teak with integrated swim ladder

Hot & cold water shower

Storage lockers

Deck

Full storage covers

S.S. anchor and chute

Reversible electric anchor winch with foredeck & helm controls

Stainless steel 44 lb Delta anchor with 130 ft of chain

Foredeck hatch

Remote control searchlight

Twin electric horns

Fuel and water fillers

Teak side deck

Exclusions

Owner's personal belongings.

Disclaimer

The Company offers the details of this vessel or yacht in good faith but cannot guarantee or warrant the accuracy of this information nor warrant the condition of the vessel. A buyer should

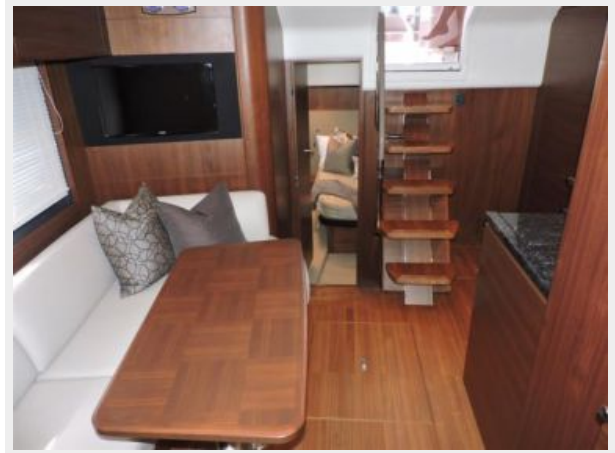
instruct his representatives, agents, or his surveyors, to investigate such details as the buyer desires validated. This vessel or yacht is offered subject to prior sale, price change, or withdrawal without notice.

PHOTOS

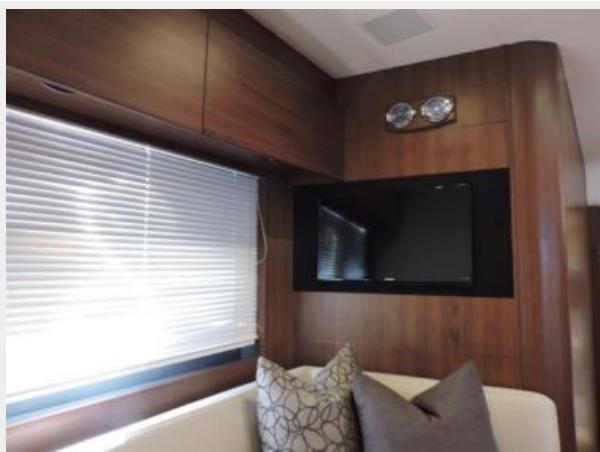
Salon



Salon



Salon TV



Galley



Galley



Master Stateroom



Master Stateroom



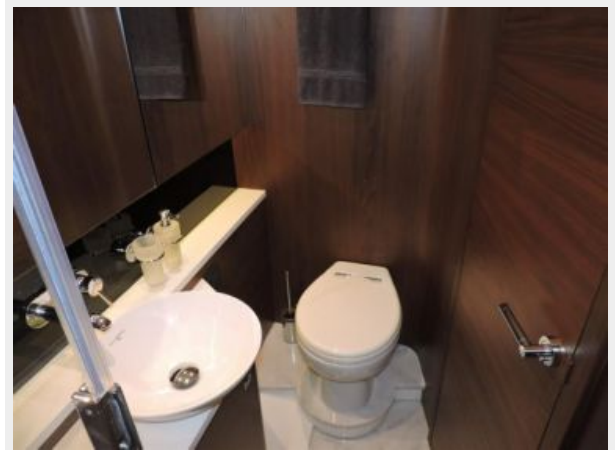
Master Stateroom



Master Stateroom



Master Stateroom



Master Stateroom



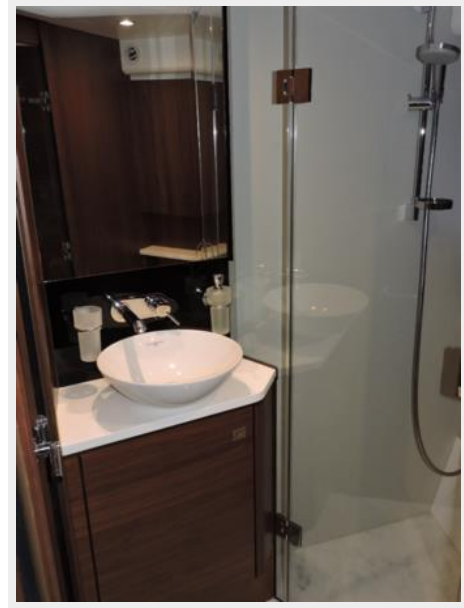
VIP Stateroom



VIP Stateroom



VIP Head



VIP Head



Helm



Helm



Engine Room



Engine Room Generator



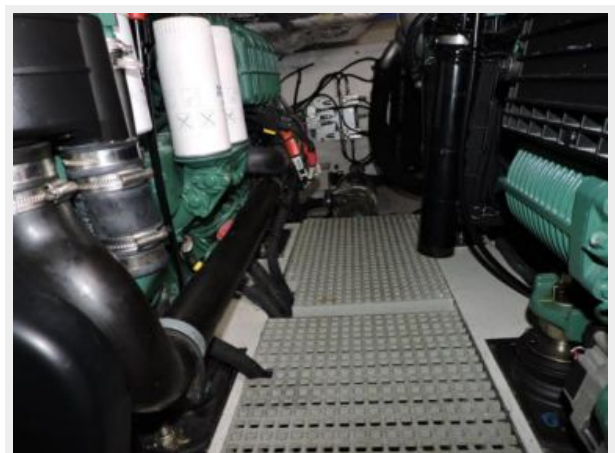
Engine Room



Mechanical



Mechanical



Upper Cockpit



Upper Cockpit



Upper Cockpit



Upper Cockpit



Upper Cockpit



Upper Cockpit



Trunk



Trunk



Bow Deck



Bow Cushion



Aft Sun Pads



Storage Covers



Sun Roof



Bow Profile



Bow Profile



Portside Profile



Portside Profile1.JPG



Portside Profile



Starboard Side



Stern



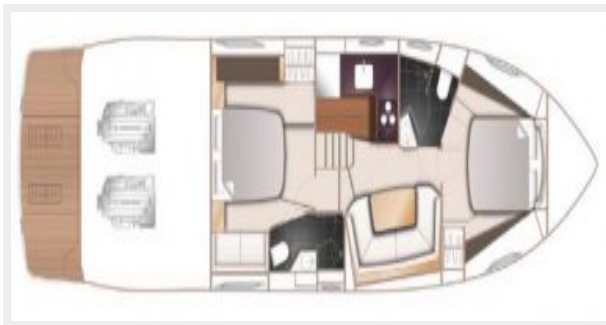
Layout



Layout



Interior Layout



Stern



Starboard Side.JPG



Side Walk.JPG



CONTACTS

Andrey Shestakov, leading yacht broker of the sales department of Shestakov Yacht Sales Inc. Shestakov Yacht Sales Inc., the official representative of the Miami/Fort Lauderdale FL headquarters.

Contact details

Email: andrey@shestakovyachtsales.com

Web: shestakovyachtsales.com/en/

Telephones

USA: +1(954)274-4435

Office hours

Monday – Saturday: **9:00 - 21:00** EDT

Sunday: **closed**

Address



Harbour Towne Marina, 850 NE 3rd St,
STE 213, Dania, FL 33004