

63FT3IN 2010 MOODY 62 DS — MOODY



Судостроитель: MOODY

Год постройки: 2010

Модель: Крейсерская яхта

Цена: **ЦЕНА ЯХТЫ ПО ЗАПРОСУ**

Местонахождение: France

Длина общая: 62' 0" (18.90m)

Ширина: 17' 2" (5.23m)

Макс. осадка: 9' 7" (2.92m)

Купить 63ft3in 2010 Moody 62 DS — MOODY а также выбрать подходящую вам яхту из нашего каталога яхт вам поможет опытный яхтенный брокер Андрей Шестаков. На сегодняшний день компания Shestakov Yacht Sales Inc. имеет большое количество яхт в собственном списке продаж, а также тесно сотрудничает со всеми крупными яхтенными производителями по всему миру.

Для того чтобы купить яхту 63ft3in 2010 Moody 62 DS — MOODY а также проконсультироваться по любому вопросу связанному с покупкой, продажей, чартером яхт позвоните по телефону **+7(918)465-66-44**.

ОГЛАВЛЕНИЕ

ОГЛАВЛЕНИЕ	2
ХАРАКТЕРИСТИКИ	5
Обзор	5
Основная информация	5
Размеры	5
Скорость, вместимость и масса	6
Корпус и палуба	6
Информация о двигателе	6
ПОДРОБНОЕ ОПИСАНИЕ	7
Manufacturer Provided Description	7
Hull	7
Deck	7
Accommodations	7
Electrical	8
Engineer Room	8
Sail Area	9
Miscellaneous	9
Исключения	9
Отказ от ответственности	9
ФОТОГРАФИИ	10
Docked	10
Manufacturer Provided Image: Moody 62 DS	10
Docked	10
Transom	10
Fwd platform	10
Teak Deck	10
Steering Stbd	11
Cockpit	11

Cockpit	11
Tender Garage	11
Roof	11
Bimini	11
Steering Port side	12
Cockpit	12
Steering Stb	12
Manufacturer Provided Image	12
Cockpit Table	12
Nav Station	12
Guest Cabin	13
Owner Suite	13
Owner Suite	13
Owner Cabin	13
Owner Suite	13
VIP cabin	14
Settee Owner Cabin	14
Salon	14
Salon	14
Galley	14
Salon Table	14
Gourmet Galley	15
Engine	15
Table Chart	15
LED Lights Salon	15
Salon	15
Salon	15
Cockpit	16
Salon	16

Salon	16
Bow Thruster	16
Stern Thruster	16
Salon	16
Salon	17
Galley	17
Salon	17
Generator	17
Engine Room	17
Lay Out	17
Deck Plan	18
КОНТАКТЫ	19
Контактная информация	19
Телефоны	19
Время работы	19
Адрес	19

ХАРАКТЕРИСТИКИ

Обзор

- Owner deceased suddenly. Yacht need to be sold asap by the inheritors. Offers are welcome.
- The vessel was bought by actual owner 6 months ago.
- The owner, who was an experienced sailor had started a complete upgrade of all systems and equipment.
- New Main Sail Never in its bag. Never installed.
- New Batteries.
- Electrical System has been surveyed and upgraded
- Engine and Generator just maintained (yearly maintenance just was done).
- New paint on carbon pole.
- New spinlocks not yet installed.
- 3 New hatches not yet installed for crew quarter.

DYSID:3055547

Основная информация

Тип судна: Крейсерская яхта

Подкатегория: Крейсерский кеч

Модельный год: 2010

Год постройки: 2010

Страна: France

Размеры

Длина общая: 62' 0" (18.90m)

Длина по ватерлинии: 56' 4" (17.17m)

Ширина: 17' 2" (5.23m)

Макс. осадка: 9' 7" (2.92m)

Длина привального бруса: 63' 3"
(19.28m)

Скорость, вместимость и масса

Водоизмещение: 66137 Pounds

Вместимость воды: 189 Gallons

Объем топливного бака: 187 Gallons

Корпус и палуба

Материал корпуса: Fiberglass

Комплектация корпуса: Monohull

Информация о двигателе

Двигатели: 1

Производитель: Volvo

Модель: D3-150

Тип двигателя: Inboard

Тип топлива: Diesel

ПОДРОБНОЕ ОПИСАНИЕ

Manufacturer Provided Description

The Moody Decksaloon “one level living” concept is a unique approach in modern yacht design. To discover it, simply open the sliding doors and enjoy a 360 degree view from the living area and the spacious cockpit all on the same level. The large cockpit with its standard cockpit table and the open deck aft is ideal for spending time with family and friends. Welcome on board.

Hull

Epoxy build with prepreg, fibreglass fabrics, epoxy-vacuum bagged, corecell TM foam Carbon fibre chain plates Epoxy E-Glass with UD reinforcements Warranty 2 years on GRP below waterline Integrated hull windows Standard colour: painted from colour card with classic waterline, other colours as option painted

Deck

White Deck built in fibreglass and epoxy super structure Thermal and sound insulated Solid 8 mm laid Teak deck on side deck, seats, cockpit floor Unique full perimeter bulwark complete with ss handrail, offering all round protection with special boarding gates in bulwark **Deck Equipment** Two separate helmsman positions aft of leisure cockpit Winches situated adjacent to steering position Free walk trough to leisure cockpit Large leisure gast cockpit Large fixed cockpit table with optional fridge Cockpit lockers Drinks holders Self draining cockpit Special washboard and drain system in front of the large sliding s.s. and glass sliding doors Dedicated deck storage for liferaft Dedicated dinghy garage Dedicated side deck folding side gates with boarding steps Dedicated gas locker inide deck Fixed stem head fitting with anchor roller and second mooring roller 40kg Delta type anchor with 60 m / 13 mm chain Self draining anchor locker Electrical windlass mounted on deck - gipsy and wrapping drum version Lewmar 540 unit Mooring cleats x 6, fixed cleats at bow and stern Fairleads x 6, all deck level mounted with panama fairleads through bulwark Foredeck sail locker SS bathing ladder Self tacking jib system Halyard lead aft to cockpit Sheave deck organisers Mainsheet twin system Bullwark padeyes for gennaker and jib barber hauler - no track option required Bow fitting for gennaker Hatches Flush Lewmar LED navigation lights 2 x Electric Winches Standard Lewmar 65 All winches Self Tailing throughout Hydraulic bathing platform/dinghy garage door (Option or Std) Optional hydraulic bathing platform/dinghy garage door Option of hydraulic boarding passarelle extending from transom alongside garage door however we recommend the carbon folding stowaway passarella Large climb in cockpit locker with optional workbench and storage box system

Accommodations

High quality marine plywood, mahogany veneer, satin varnish Option: American cherry, satin varnish Quality teak in satin finish Bulkheads Wooden door frames Wood / Sandwich doors Blinds on all port light Blinds on all saloon side windows Different layouts TBA Moody Modular Cabin Concept **Upholstery** According to Moody colour selection Quality fabrics and Comfort Viscomattresses, in fwd cabins with battensystem **Mastercabin** Master Cabin (3 versions): Standard version - berth to port, transverse WC unit, sail locker forward Option - same cabin, hanging space forward, WC forward with shower in bow, no sail locker possible Option - island berth layout, WC aft port, sail locker forward All with under berth storage Hanging locker and bureau Ensuite heads, separate shower stall 2 fixed hull port light coachroof hatch centre line coach roof skylights blinds for coach roof skylights blinds for hull port lights **Starboard Guest Cabin** Twin beds as standard Choice of double berth Generous hanging locker Fixed hull port lights Opening coach roof light Blind for coach roof and port light Generous hanging locker **Head / Shower to starboard guest cabin** Heads compartment with corian, big mirrors Large washbasins, mixer tabs Starboard Guest WC is ensuite for guest cabin and also acts as the day WC

Electrical

24 Volt and 230 V Generator Fischer Panda 6000i (to run for example (washer dryer dishwasher etc) but no air-conditioning **Optional Equipment** Generator upgrade 10.2 kW for air-conditioning load Inverter 3000 Watt with Battery charger 24 V / 75 Amp. Washing machine/dryer Microwave Nespresso coffee maker Double dish draw dishwasher Fisher Paykel **Refrigeration** 1x fridge box top opening and S.S side door standard (130 litre approx Isotherm Type) **Optional Equipment** 1x drinks fridge (100 litre approx Isotherm Type) under chart table 1x optional freezer (100 litre approx Isotherm Type) installed work shop Drinks fridge in cockpit table optional (36 litre approx Isotherm Type) Icemaker **Batteries** Engine batteries AGM 12 v 140Ah, CCA 760A Battery charger for start battery 12V 20A Service batteries AGM 600 Ah 24 V standard Optional batteries 300A 24V for service Standard Inverter 3000 Watt with battery charger 24V/75Amp **Shore power supply** 1 x 230V, 16A wired to charger as standard option 1 x 230V 32A for air-conditioning **Electrical control panels** Breakers/switch panel Battery monitoring Separate AC and DC panel Separate Generator set system

Engine Room

Volvo D3-150 150HP Hydraulic gear box, KMH 50 A Indirect water cooling 12 V starting battery bank AGM 12V 140 Ah, CCA 760A (also for Generator Set) 1 x 12 V alternator for engine Second alternator for service bank charging Mastervolt 24V/110A Standard 11 position electronic engine control Engine panel with start controls in cockpit Water cooled exhaust with water lift silencer SS propeller shaft Flexible coupling with stern tube 4 bladed high efficiency folding propeller Engine room sound insulation Engine room ventilation Standard bowthruster VIP 150 or equivalent (retractable) Option of sternthuster VIP 150 or equivalent (retractable)

Sail Area

I : 80.1 ft J : 22.9 ft P : 76.1 ft E : 27.9 ft Working Sail Area : 1176.5 sq ft

Miscellaneous

6 off lifevests Cutlery for 8 Crockery porcelain for 8 Toolbox Basic spare part kit for engine package 6 quality Fenders 4 quality mooring lines

Исключения

При продаже яхты исключаются личные вещи владельца.

Отказ от ответственности

Компания предоставляет описание судна или яхты добросовестно, но не может гарантировать точность этой информации, а также не ручается за техническое состояние. Покупатель должен проинструктировать своих агентов или оценщиков исследовать представленную информацию более подробно, по собственному желанию. Продажа судна или яхты, изменение цены или снятие с продажи будет происходить без предварительного уведомления.

ФОТОГРАФИИ

Manufacturer Provided Image: Moody 62 DS



Docked



Docked



Transom



Teak Deck



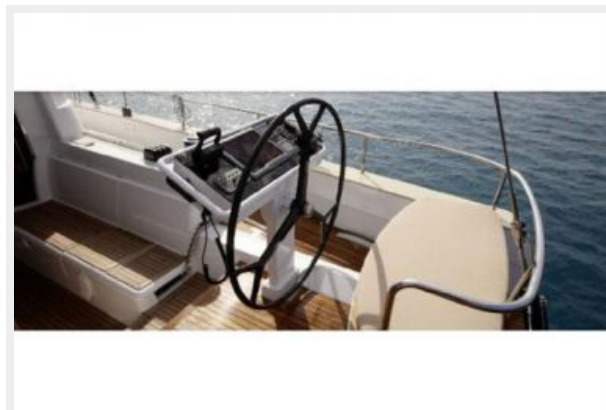
Fwd platform



Cockpit



Steering Stbd



Cockpit



Tender Garage



Roof



Bimini



Steering Port side



Cockpit



Steering Stb



Manufacturer Provided Image



Cockpit Table



Nav Station



Guest Cabin



Owner Suite



Owner Suite



Owner Cabin



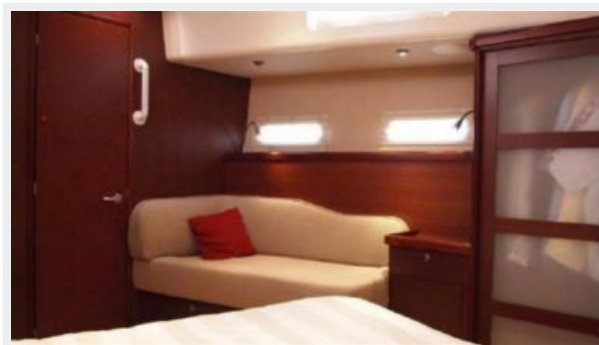
Owner Suite



VIP cabin



Settee Owner Cabin



Salon



Salon



Salon Table



Galley



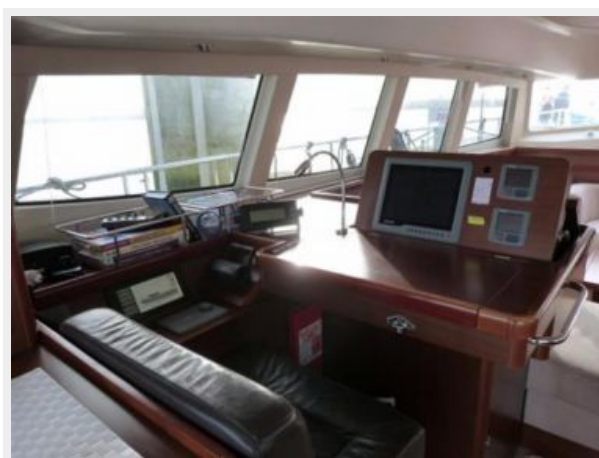
Gourmet Galley



Engine



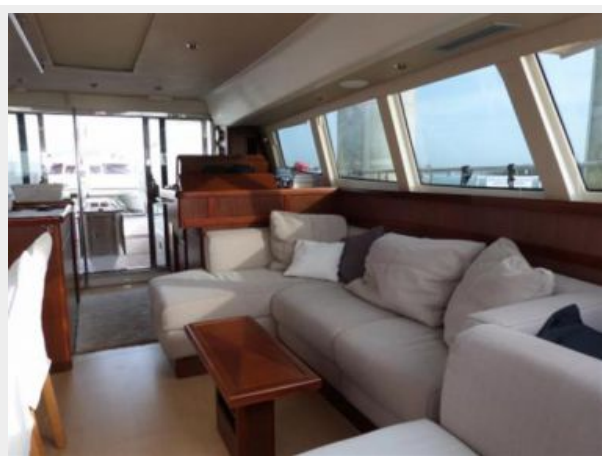
Table Chart



LED Lights Salon



Salon



Salon



Cockpit



Salon



Salon



Bow Thruster



Stern Thruster



Salon



Salon



Galley



Salon



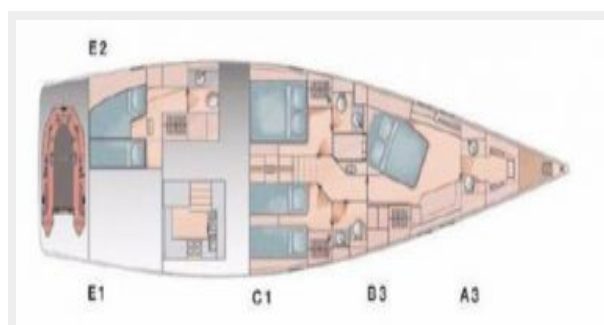
Generator



Engine Room



Lay Out



Deck Plan



КОНТАКТЫ

Андрей Шестаков (Andrey Shestakov) – ведущий яхтенный брокер отдела продаж яхт и судов компании Shestakov Yacht Sales Inc. Официальный представитель Shestakov Yacht Sales Inc. для русскоговорящих клиентов в центральном офисе компании в Майами/Форт Лодердейл/Флорида/США.

Контактная информация

Email: andrey@shestakovyachtsales.com

Web: shestakovyachtsales.com

Телефоны

Краснодарский край: **+7(918)465-66-44**

США, Майами, Флорида: **+1(954)274-4435**

Время работы

Понедельник – Суббота: **9:00 - 21:00**
EDT

Воскресенье: **Закрито**

Адрес



Harbour Towne Marina, 850 NE 3rd St,
STE 213, Dania, FL 33004