

CLOUD BREAK — FERRETTI YACHTS



Builder: FERRETTI YACHTS

Year Built: 2014

Model: Motor Yacht

Price: PRICE ON APPLICATION

Location: United States

LOA: 69' 0" (21.03m)

Beam: 18' 2" (5.54m)

Max Draft: 5' 6" (1.68m)

Cruise Speed: 27 Kts. (31 MPH)

Max Speed: 30 Kts. (35 MPH)

Our experienced yacht broker, Andrey Shestakov, will help you choose and buy a yacht that best suits your needs **Cloud Break — FERRETTI YACHTS** from our catalogue. Presently, at Shestakov Yacht Sales Inc., we have a wide variety of yachts available on our sale's list. We also work in close contact with all the big yacht manufacturers from all over the world.

If you would like to buy a yacht **Cloud Break — FERRETTI YACHTS** or would like help answering any questions concerning purchasing, selling or chartering a yacht, please call **+1(954)274-4435**

TABLE OF CONTENTS

TABLE OF CONTENTS	2
SPECIFICATIONS	3
Overview	3
Basic Information	3
Dimensions	3
Speed, Capacities and Weight	3
Accommodations	4
Hull and Deck Information	4
Engine Information	4
DETAILED INFORMATION	5
Interior	5
Electronics and Navigation Equipment	5
Deck and Hull	6
Mechanical	6
Exclusions	6
Disclaimer	6
PHOTOS	7
CONTACTS	16
Contact details	16
Telephones	16
Office hours	16
Address	16

SPECIFICATIONS

Overview

Perfect opportunity to own a better than New 2014 Ferretti 690. This captain maintained boat includes a Seakeeper stabilization, four cabin layout, and many other extras. **Extended MTU Engine Warranties thru May 22, 2022 or 1876 hrs**

Call today to see this pristine yacht. It won't be available for long.

Basic Information

Category: Motor Yacht

Model Year: 2014

Year Built: 2014

Country: United States

Vessel Top: Open W/Bimini Top

Fly Bridge: Yes

Cockpit: Yes

Dimensions

LOA: 69' 0" (21.03m)

LWL: 57' 1" (17.40m)

Beam: 18' 2" (5.54m)

Max Draft: 5' 6" (1.68m)

Speed, Capacities and Weight

Cruise Speed: 27 Kts. (31 MPH)

Max Speed: 30 Kts. (35 MPH)

Water Capacity: 262 Gallons

Fuel Capacity: 978 Gallons

Accommodations

Total Cabins: 4

Sleeps: 8

Crew Sleeps: 2

Crew Heads: 1

Hull and Deck Information

Hull Material: Fiberglass

Engine Information

Engines: 2

Manufacturer: MTU

Model: 8V2000 M94

Engine Type: Inboard

Fuel Type: Diesel

DETAILED INFORMATION

Interior

- Air conditioning in all cabins (90,000 BTU)
- Wood floor in salon, galley & main helm
- Lighting for stairs toward cabin
- Ceramic Cooktop (4 rings)
- Miele Oven
- Custom Drawer Storage in galley
- Extractor fan in galley
- Hi-fi surround system Bose 3-2-1 in salon
- I-Pod docking station for Bose in master & salon
- Docking station for Mini Hi-Fi in master
- TV 32" in salon
- TV 26" in master
- Apple TV in master & salon
- TV & Directv receivers for two guest staterooms, crew area plus Xbox for guest staterooms
- Salon cooler in drawer
- Leather sofas
- Custom Ottoman for salon with high/low table coming from inside one ottoman
- Interspring mattresses for the master & VIP cabin
- Queen bed in starboard cabin
- Electric blinds in main deck & salon
- Backrests for flybridge sunpad area in front of helm
- Additional folding bed in crew
- Crew head
- Washer & dryer in crew area

Electronics and Navigation Equipment

- Antenna empty dome for symmetry
- Radar antenna open array Furuno
- Bose amp with remote & loudspeakers in cockpit
- Mini Hi-Fi CD in flybridge
- Autopilot Furuno in main helm & flybridge
- Navnet 3D at upper & lower helm
- VHF Furuno in main helm & flybridge
- Multifunction navigation instruments
- Furuno in main helm & flybridge

Deck and Hull

- Hydraulic Bimini Top
- Side Opening Pulpit
- Stainless steel handles
- External sun pads & cushions with draining foam
- Lighting system on sidewalks
- Cockpit counter top & table in teak
- Underwater lights (2 stern & 2 under master)
- Life rafts 6 +6

Mechanical

- Onan Generator 23Kw - 1400 hours
- Seakeeper Gyro Stabilizer
- Smoke separator for generator
- Bowthruster 13.1hp
- Grey water system with tank
- Black water system with tank
- FM200 fire boy automatic & manual in engine rooms & systems area
- Smoke detectors in all area
- Ground fault interrupters
- 120V Glendining 100AMP with remote control
- Carling switch 100Amp for shore supply
- Shore power GFI 50Amp-30Amp
- Battery cut offs for appliances & generators
- Battery charger for generator
- Air intake engine room and all areas
- 600 GPD watermaker

Exclusions

Owner's personal belongings.

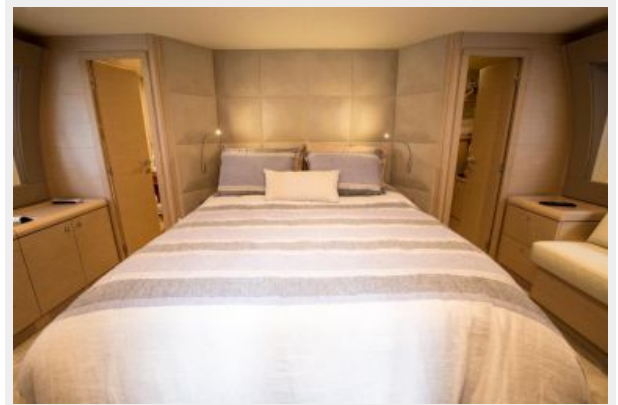
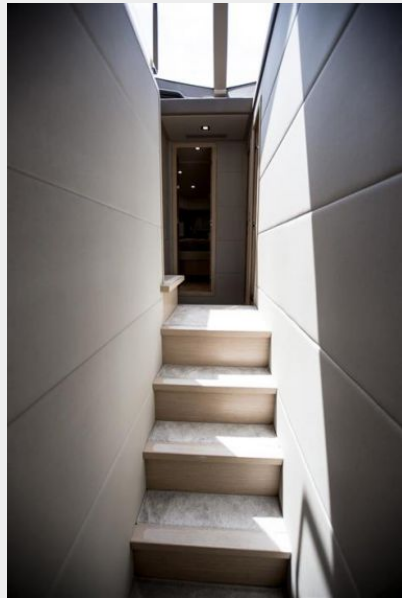
Disclaimer

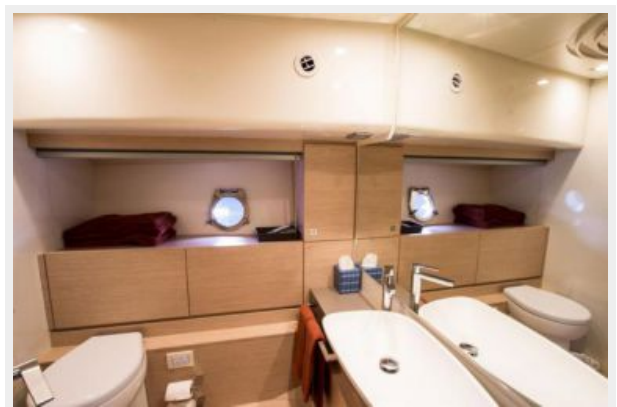
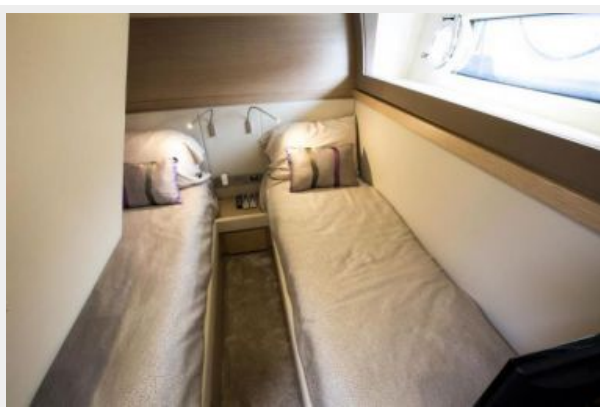
The Company offers the details of this vessel or yacht in good faith but cannot guarantee or warrant the accuracy of this information nor warrant the condition of the vessel. A buyer should instruct his representatives, agents, or his surveyors, to investigate such details as the buyer desires validated. This vessel or yacht is offered subject to prior sale, price change, or withdrawal without notice.

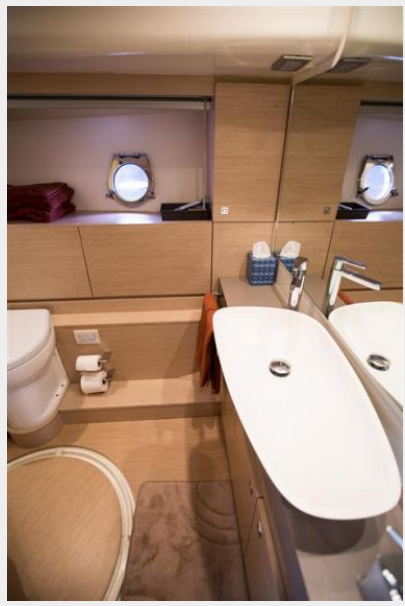
PHOTOS



















CONTACTS

Andrey Shestakov, leading yacht broker of the sales department of Shestakov Yacht Sales Inc. Shestakov Yacht Sales Inc., the official representative of the Miami/Fort Lauderdale FL headquarters.

Contact details

Email: andrey@shestakovyachtsales.com

Web: shestakovyachtsales.com/en/

Telephones

USA: +1(954)274-4435

Office hours

Monday – Saturday: **9:00 - 21:00** EDT

Sunday: **closed**

Address



Harbour Towne Marina, 850 NE 3rd St,
STE 213, Dania, FL 33004