

WEEKEND SOCIETY — BENETEAU



Судостроитель: [BENETEAU](#)

Год постройки: 2016

Модель: Моторная яхта

Цена: **ЦЕНА ЯХТЫ ПО ЗАПРОСУ**

Местонахождение: United States

Длина общая: 60' 0" (18.29m)

Ширина: 16' 2" (4.93m)

Макс. осадка: 3' 10" (1.17m)

Купить **WEEKEND SOCIETY — BENETEAU** а также выбрать подходящую вам яхту из нашего каталога яхт вам поможет опытный яхтенный брокер Андрей Шестаков. На сегодняшний день компания **Shestakov Yacht Sales Inc.** имеет большое количество яхт в собственном списке продаж, а также тесно сотрудничает со всеми крупными яхтенными производителями по всему миру.

Для того чтобы купить яхту **WEEKEND SOCIETY — BENETEAU** а также проконсультироваться по любому вопросу связанному с покупкой, продажей, чартером яхт позвоните по телефону **+7(918)465-66-44**.

ОГЛАВЛЕНИЕ

ОГЛАВЛЕНИЕ	2
ХАРАКТЕРИСТИКИ	4
Обзор	4
Основная информация	4
Размеры	5
Скорость, вместимость и масса	5
Размещение	5
Корпус и палуба	5
Информация о двигателе	5
ПОДРОБНОЕ ОПИСАНИЕ	6
Safety on Deck	6
Mooring Lines- Anchoring	6
Foredeck	6
Cockpit	6
Flybridge	7
Flybridge Helm Station	7
Interior	7
Wheelhouse	7
Main Helm Station	8
Salon	8
Galley	8
Master Stateroom (Aft)	8
Master Head	9
VIP Cabin (Forward)	9
VIP Head	10
Guest Cabin (side)	10
Captain's Cabin	10
Engine and Propulsion	10

Electricity	11
Plumbing	11
Trim Level Advantage	11
Trim Level Elegance	12
Additional Features- Exterior	12
Additional Features- Interior	13
Disclaimer	13
Исключения	13
Отказ от ответственности	13
ФОТОГРАФИИ	15
КОНТАКТЫ	22
Контактная информация	22
Телефоны	22
Время работы	22
Адрес	22

ХАРАКТЕРИСТИКИ

Обзор

This 2016 Monte Carlo 6 has been extremely well maintained by her full time captain. She is fully loaded and turn key. Call today to find out more about her many features and options including:

- **2 x 600 HP Cummins QSC 8.3L Zeus**
- 3 Staterooms with Ensuite Heads
- Captains Quarters
- **Hydraulic Swim Platform** - max load 771 lbs (7.5" x 13'1")
- **10' Skipper Yacht Tender**
- LUXE Package
- Transom Galley Unit - Electric Grill, Sink and Worktop
- Zeus Cockpit Joystick (optional)
- **Seakeeper 9 Gyroscopic Stabilizer**
- **Black Fiberglass T-Top with Polyester Sunroof**
- HD Satellite TV
- **1 x NSO 24" SIMRAD**
- Electric Sun Awning
- 23 Bottle Wine Cooler in Galley
- **Besenzoni Pilot Seats**
- 2 Electric Lounge Chairs on Foredeck with Remote Control
- Click on Full Specs to see more....

*****FULL Warranty until 2019*****

DYSID:3070011

Основная информация

Тип судна: Моторная яхта

Подкатегория: Flybridge

Модельный год: 2016

Год постройки: 2016

Страна: United States

Открытая палуба мостика: Да

Кубрик: Да

Размеры

Длина общая: 60' 0" (18.29m)

Длина по ватерлинии: 52' 5" (15.98m)

Ширина: 16' 2" (4.93m)

Макс. осадка: 3' 10" (1.17m)

Трапы: 24' 3" (7.39m)

Скорость, вместимость и масса

Водоизмещение: 43753 Pounds

Вместимость воды: 210 Gallons

Вместимость сточного бака: 95 Gallons

Объем топливного бака: 580 Gallons

Размещение

Всего кают: 3

Всего коек: 3

Всего ком. состава: 3

Корпус и палуба

Материал корпуса: Fiberglass

Информация о двигателе

Двигатели: 2

Производитель: Cummins

Модель: QSC 8.3L Zeus

Тип двигателя: Inboard

Тип топлива: Diesel

ПОДРОБНОЕ ОПИСАНИЕ

Safety on Deck

- Stainless steel half open pulpit with teak step and hand rail
- Stainless steel pulpit surrounding all of flybridge
- 2 Stainless steel handrails on access to side decks steps
- 1 Handrail on aft transom

Mooring Lines- Anchoring

- Bow fitting
- Electric Windlass 24 V (2,000 W)
- Remote control in mooring locker + windlass control from wheelhouse and flybridge helm station
- 2 Mooring lockers
- 2 Forward cleats, 2 central and 4 aft in stainless steel
- 6 Stainless steel fairleads to aft of cockpit

Foredeck

- 4 Cup holders
- 1 Opening deck hatch; 1 Fixed hatch
- Storage locker
- Pump for deck washing

Cockpit

- Gate access (starboard)
- 6 Person settee in cockpit
- Teak flooring in cockpit
- Upholstery -Mullstone
- Access hatch to engine compartment
- Liferaft compartment or storage under cockpit floor
- Access door from swim platform to crew cabin
- Cockpit shower with faucet
- Stairway access to flybridge
- Teak slatted sunbathing area on swimming platform
- Retractable ladder in swimming platform with solid wood steps and stainless steel handrails

- Direct and indirect LED lighting

Flybridge

- Two seater co-pilot bench to port
- 8 Person settee
- Teak fixed folding table
- Aft sunpad on flybridge
- Flybridge galley with sink (hot/cold), electric grill, glasses storage, corian "sand" countertop
- Radar support, aerials and lights in black lacquered polyester
- Courtesy lighting (LED)
- Exterior upholstery Mullstone

Flybridge Helm Station

- Grey tinted windscreen surrounded by stainless steel frame
- Helm station with rudder indicator, steering wheel, electric engine controls and joystick, rev counter, fuel gauge, 12 V socket
- Simrad NSS 16" screen
- Controls for windlass, trim tabs, flybridge lighting, navigation lights, bilge pumps
- Adjustable pilot seat
- 2 cupholders and storage

Interior

- Slatted teak floor in galley
- Ivory carpet in salon and cabins
- Teak head floors
- Walnut woodwork

Wheelhouse

Headroom: 6'5"

- Mirror tinted glass Bay window and black painted frame with full opening (1 opening and 2 folding) Curtain "cream"
- "Venitian" blinds in lacquered wood "cream"
- Direct and indirect lighting LED

Main Helm Station

- One-piece windshield, in non-tinted laminated glass
- 2 Windshield wipers with washers
- Defoggers at base of windshield
- Pilot seat and double co-pilot bench, or "Seagull Besenzoni" Pilot seat with integrated engine controls
- Storage Drawer
- Dashboard with "sand" metallic paint
- Vessel view 4" (engine data)
- Trim tab controls
- Cummins throttle and controls
- Zeus joystick
- Rudder indicator
- Functional controls: wiper, defogger, fog horn, navigation lights, windlass
- 1 x 24" Simrad NSO screen
- SeaKeeper Gyro Controls
- 1 12 V Socket

Salon

- Mirror tinted side windows, 2 opening (port and starboard)
- 6 Seater sofa
- High-low electric table, leather top "Eclectic Brown"
- 40" LED television, Audio & DVD player and Bose Speakers

Galley

- Stainless steel sink with mixer tap
- 3 burner induction cooktop
- Corian "Sand" countertop
- 2 Drawer fridges (20 Gal - standard)
- Cutler & glasses storage
- Trash bin
- Travertine Counter tops
- Extractor hood
- Oven
- 2 110 V Sockets

Master Stateroom (Aft)

Headroom: 6'4"-6'8"

- Full beam stateroom
- Double berth (6'5" x 5'2")
- Teak Flooring
- Marine mattress with bed base
- Padded bed head board: "Armani Casa"
- 2 Bedside tables with drawer and reading light
- 2 Illuminated wardrobes with double closets and shelves
- Direct and indirect lighting LED
- 2 110 V sockets
- 2 Panoramic opening portholes-fitted portlights with blinds, "Cream" Blackout curtain
- 32" LED TV
- Storage cupboards (Port side)
- Mirror

Master Head

Headroom: 6'5" - 6'9"

- Vacuflush electric toilet + shared rigid tank (55 US Gal)
- Italian shower with rain shower column
- Basin with mixer tap, Sink in Travertine
- Mirror and storage space
- Automatic shower water drainage (by gravity, towards a reserve 13 US Gal)
- 1 110 V socket
- Opening hull porthole with "Cream" Blackout curtain blinds
- 1 towel rail

VIP Cabin (Forward)

Headroom: 6'8"

- Double berth (6'6" x 4'7") or two simple beds (sliding system)
- Marine mattress with bed base
- Padded bed head board, Majilite
- 4 Opening hull portholes, with blinds, "Cream" Blackout curtain
- Long natural light wells, with opening deck hatch, fitted blinds and mosquito net
- 2 Illuminated wardrobes with hanging locker and shelving
- Storage
- 2 110 V Sockets
- Direct and indirect lighting LED

VIP Head

Headroom: 6'5" - 6'9"

- Vacuflush electric toilet + Shared rigid tank (40 US Gal)
- Separated shower stall with door
- Basin with mixer tap, Sink in Travertine
- Shower with mixer tap
- Mirror and storage space
- Automatic shower water drainage (by gravity, towards a reserve 13 US Gal)
- Opening hull porthole
- 1 Towel rail
- 1 110 V Socket

Guest Cabin (side)

Headroom: 6'2" - 6'8"

- 2 Sliding beds, double bed available: 6'3" x 2'5" (single bed) 6'3" x 4'10" (double bed)
- Marine Mattresses
- Padded bed headboards, Majilite
- 2 Opening hull portholes, with blinds, "Cream" Blackout curtain
- Bedside tables with drawer and reading light
- 1 110 V Socket
- Hanging locker with lighting

Captain's Cabin

Headroom : 5'4"

- Shower
- VacuFlush toilet
- Basin with hot and cold water mixer tap under pressure
- 1 Fixed porthole + 1 Opening porthole

Accessible from swim platform

Engine and Propulsion

- 2 x Cummins QSC 8.3 L Zeus - 600 HP
- Fuel filter with decanter
- Sea water filter

- Air intakes on the deck for engine compartment cooling
- Hot air extraction forced by electric ventilators
- Engine room foam soundproofed
- Fire extinguishing system activated from the main helm station (wheelhouse)
- Stainless steel fuel filler
- Fuel tanks - 2 x 290 US Gal
- Hydraulic steering
- 2 Pods with counter rotating propellers
- Control joystick (wheelhouse and flybridge)
- Cummins "Skyhook" virtual anchoring
- Automatic trim tabs

Electricity

- US Electrical Specifications
- 72k BTU tropical air conditioning
- 8 12 V batteries
- Radio-controlled wireless switches
- 2 50 Amp shore power cables
- 3 Bilge pumps: 2 Electric pumps - 1 Manual pump
- 1 Extinguisher
- Inverter
- Power distributor
- Battery Charger

Plumbing

- 2 x 105 US Gal water tanks
- Stainless steel water filler
- Shore freshwater supply
- Water pump for pressurizing hot/cold water system
- 21 US Gal water heater working off engine exchanger and electric

Trim Level Advantage

- Foredeck and catwalks in teak
- 2 LED lights integrated to the foredeck
- Electric long chairs on foredeck
- TV LED 40" in the salon
- Bose lifestyle 535 5.1 Sountouch Hi-fi system + DVD Player
- Ivory & Eclectic Brown Indoor leather accents on countertops

- 21 KW Cummins Onan Generator
- Solid wood cockpit table + Cover
- 1 x 24" SIMRAD NSO Evo 2 Display + 1 multifunction NSS 16" evo2 display on flybridge
- Dual-station Simrad VHF
- AIS 400 (Transmitter/receiver) Coupled with the VHF
- Simrad Broadband 4G Radar
- Wifi Connection module (Simrad link to tablet)
- Aft camera
- Hydraulic Swim Platform (max load 771lbs)
- Dinghy cradle integrated into swim platform
- Bow thruster at main helm and flybridge helm station

Trim Level Elegance

Includes Advantage Trim Level with the addition of:

- Solid wood cockpit table + Cover
- 2 x Simrad NSO 16" evo2 displays in wheelhouse + 1 multifunction NSS 16" evo2 display on flybridge
- Dual-station Simrad VHF
- AIS 400 (Transmitter/receiver) Coupled with the VHF
- Simrad Broadband 4G Radar
- Wifi Connection module (Simrad link to tablet)
- Aft camera

Additional Features- Exterior

- Mooring kit: Delta Anchor + Chain (40m) + Line (50m) + 4 Mooring lines + 6 fenders
- Zeus cockpit joystick and thruster control
- Underwater Lights
- Deck searchlight with remote control
- Retractable electric sun awning
- 23 bottle Wine cooler (16 bottle standard)
- Exterior "Bose speakers in cockpit, foredeck and flybridge
- Foredeck "Fusion speakers + Remote control"
- Ice maker (flybridge)
- Flybridge Electric Grill
- Outside wheelhouse covers "Sunworker" black
- Exterior upholstery fabric Mull Stone
- Flybridge helm seat : Besenzoni
- 4 Folding chairs in teak "Rex" (MC special edition)
- Protective upholstery covers : Cockpit, foredeck, flybridge

- Metallic Hull Paint - DuPont
- Foredeck sunshade
- T-Top with Black polyester sunroof
- Electric reel for shore power
- Teak floor - Flybridge

Additional Features- Interior

- Washer + Dryer
- 4 k BTU Air conditioning in crew cabin
- Mosquito screens (Cabin and Aft entrance door)
- "Besenconi Seagull" Pilot seat with integrated engine controls (Main helm station)
- Salon upholstery - leather
- 1 SIMRAD NSO 24" Screen (in place of 2 x NSO 16" in wheelhouse)
- Teak floors in salon and companion way
- Seakeeper gyro stabilizer (Seakeeper 9)
- Decor luxe option (Travertine style on galley worktop, basin top + Basin + Travertine style shower for owner's cabin and VIP cabin, Designer's decor staircase parapet, Teak floor in master cabin)
- Safe
- Wheelhouse electric blinds
- Central Vac

Disclaimer

The Company offers the details of this vessel in good faith but cannot guarantee or warrant the accuracy of this information nor warrant the condition of the vessel. A buyer should instruct his agents, or his surveyors, to investigate such details as the buyer desires validated. Hours listed may vary from actual hours due to recent use. Purchaser is encouraged to verify hours prior to purchase. This vessel is offered subject to prior sale, price change, or withdrawal without notice.

Исключения

При продаже яхты исключаются личные вещи владельца.

Отказ от ответственности

Компания предоставляет описание судна или яхты добросовестно, но не может гарантировать точность этой информации, а также не ручается за техническое состояние. Покупатель должен проинструктировать своих агентов или оценщиков исследовать представленную информацию более подробно, по собственному желанию.

Продажа судна или яхты, изменение цены или снятие с продажи будет происходить без предварительного уведомления.

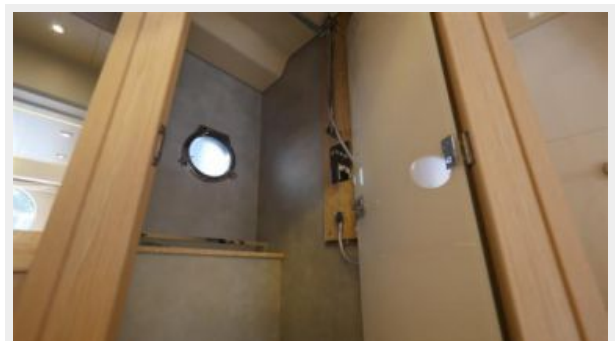
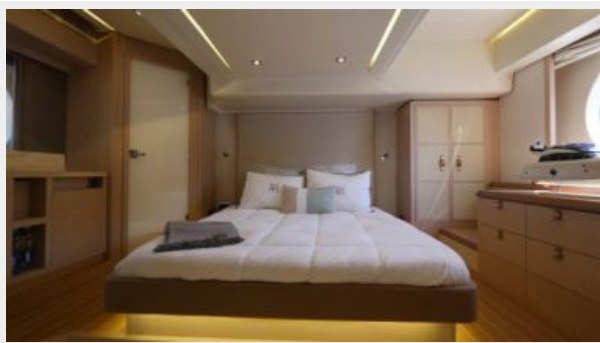
ФОТОГРАФИИ















КОНТАКТЫ

Андрей Шестаков (Andrey Shestakov) – ведущий яхтенный брокер отдела продаж яхт и судов компании Shestakov Yacht Sales Inc. Официальный представитель Shestakov Yacht Sales Inc. для русскоговорящих клиентов в центральном офисе компании в Майами/Форт Лодердейл/Флорида/США.

Контактная информация

Email: andrey@shestakovyachtsales.com

Web: shestakovyachtsales.com

Телефоны

Краснодарский край: **+7(918)465-66-44**

США, Майами, Флорида: **+1(954)274-4435**

Время работы

Понедельник – Суббота: **9:00 - 21:00**
EDT

Воскресенье: **Закрето**

Адрес



Harbour Towne Marina, 850 NE 3rd St,
STE 213, Dania, FL 33004