

BOBKAT — RIVIERA



Судостроитель: RIVIERA

Год постройки: 2007

Модель: Катер для спортивной рыбалки

Цена: ЦЕНА ЯХТЫ ПО ЗАПРОСУ

Местонахождение: United States

Длина общая: 51' 0" (15.54m)

Ширина: 16' 2" (4.93m)

Макс. осадка: 4' 6" (1.37m)

Крейс. скорость: 32 Kts. (37 MPH)

Макс. скорость: 37 Kts. (43 MPH)

Купить **Bobkat — RIVIERA** а также выбрать подходящую вам яхту из нашего каталога яхт вам поможет опытный яхтенный брокер Андрей Шестаков. На сегодняшний день компания **Shestakov Yacht Sales Inc.** имеет большое количество яхт в собственном списке продаж, а также тесно сотрудничает со всеми крупными яхтенными производителями по всему миру.

Для того чтобы купить яхту **Bobkat — RIVIERA** а также проконсультироваться по любому вопросу связанному с покупкой, продажей, чартером яхт позвоните по телефону **+7(918)465-66-44**.

ОГЛАВЛЕНИЕ

ОГЛАВЛЕНИЕ	2
ХАРАКТЕРИСТИКИ	5
Основная информация	5
Размеры	5
Скорость, вместимость и масса	5
Размещение	5
Корпус и палуба	5
Информация о двигателе	6
ПОДРОБНОЕ ОПИСАНИЕ	7
Salon	7
Galley	7
Master Stateroom	8
VIP Stateroom, Forward	8
Guest Stateroom, Port	8
Heads	8
Electronics	9
Deck Equipment	9
Cockpit	9
Electrical	10
Flybridge	10
Mechanical	11
Exclusions	12
Remarks	12
Исключения	12
Отказ от ответственности	12
ФОТОГРАФИИ	13
Salon	13
Salon	13

Salon	13
Dinette	13
Galley	14
Galley	14
Companionway	14
Master Stateroom	14
Master Stateroom	15
Master Stateroom	15
Master Head	15
VIP Stateroom	15
Guest Stateroom	16
VIP Stateroom	16
Guest Head	16
Stairway	16
Helm Station	17
Helm Station	17
Helm Station	17
Helm Station	17
Helm Seating	17
Flybridge	17
Flybridge	18
Flybridge	18
Bridge Deck	18
Bridge Deck Seating	18
Aft Control Station	19
Bridge Deck	19
Cockpit	19
Aft Station	19
Cockpit	20

Cockpit	20
Cockpit	20
Cockpit	20
Engine Room	21
Engine Room	21
Engine Room	21
Engine Room	21
Engine Room	22
Engine Room	22
Engine Room	22
Foredeck	22
Foredeck	23
КОНТАКТЫ	24
Контактная информация	24
Телефоны	24
Время работы	24
Адрес	24

ХАРАКТЕРИСТИКИ

Основная информация

Тип судна: Катер для спортивной рыбалки

Подкатегория: Convertible

Модельный год: 2008

Год постройки: 2007

Страна: United States

Размеры

Длина общая: 51' 0" (15.54m)

Ширина: 16' 2" (4.93m)

Макс. осадка: 4' 6" (1.37m)

Скорость, вместимость и масса

Крейс. скорость: 32 Kts. (37 MPH)

Макс. скорость: 37 Kts. (43 MPH)

Водоизмещение: 45200 Pounds

Вместимость воды: 227 Gallons

Объем топливного бака: 977 Gallons

Размещение

Всего кают: 3

Всего ком. состава: 2

Корпус и палуба

Материал корпуса: Fiberglass

Информация о двигателе

Двигатели: 2

Производитель: Caterpillar

Модель: C18

Тип двигателя: Inboard

Тип топлива: Diesel

ПОДРОБНОЕ ОПИСАНИЕ

Salon

Warm and inviting is the feeling, from the open salon to the large L-shaped leather dinette with storage below to the open galley area. With a teak high gloss interior, the finest soft goods, motorized blinds and interior stairs to flybridge.

- U-line icemaker
- Built in storage lockers/drawers to starboard
- Central Vacuum system
- Engine hatches insulated & removable
- Leather lounge with storage under (port side)
- Wine Cooler
- Air conditioning with reverse cycle heat, 24,000 BTU split to galley(8000) saloon (16,000), new 2016
- 40" Samsung LCD TV with Bose surround system
- Opening aft window
- Overhead handrail
- Easy access to breaker panel
- Overhead rod rack compartment with electric hatch door, storage for 6 TLD20's

Galley

- Access hatch to storage under galley floor with bilge lights, approximately 4' X 6'
- Electric cooktop, dual element
- Grab rail down steps to cabins
- GE microwave convection oven
- 4 drawer type refrigerators by Vitrifrigos
- U-line freezer
- Exhaust fan
- Light (DC) under galley floor on micro switch
- Lighting, overhead (DC)
- Pantry, full height
- Receptacle, AC duplex
- Storage cabinets and drawers
- Air conditioning with reverse cycle heat, 24,000 BTU split to galley (8000) saloon (16,000), new 2016
- Separate stacked washer/dryer by Asko
- Trash compactor by Kenmore
- Corian countertops with molded sink and filtered water

Master Stateroom

The Master Stateroom is larger than average, with a walk around bed and innerspring mattress. Ensuite head with full stall shower.

- Air conditioning with reverse cycle heat. 1x 12,000 BTU split into head, new 2016
- LG LCD TV 20' and DVD player
- Storage under berth including drawers and gas struts for easy access
- Hanging locker with lighting
- Headboard - upholstered mirror above
- Queen walk around berth with innerspring mattress
- New bedspreads in 2016

VIP Stateroom, Forward

- Air conditioning: 10,000 BTU with reverse cycle heat split to head portside, new 2016
- Queen walk around berth with innerspring mattress and easy lift up storage below
- Storage under berth including drawers and gas struts for easy access
- LCD TV 20' and DVD player
- Hanging locker (x2) with lighting
- Headboard - upholstered (premium fabric)
- Storage cabinets overhead
- Ensuite head
- New bedspreads in 2016

Guest Stateroom, Port

- Air conditioning: 4,000 BTU with reverse cycle, new 2016
- Hanging locker with lighting
- Upper & lower berths (foam mattresses) with storage under
- Direct access to full head

Heads

One head in the Master and one forward. The forward head serves as the “day” head offering access from the companion way and the VIP stateroom.

- Air conditioning with reverse cycle heat, new 2016
- Vacuflush toilet (fresh water)
- Holding tank with Y valve - in engine room
- Exhaust Fan
- Shower stall with glass partition

Electronics

- Flir Navigator Night Vision
- 2 - Garmin 7212 (New 2012)
- 1 -Garmin 7215 (New 2012)
- 72 Mile Radar
- Clarion AM/FM/CD/Satellite Radio
- Digital depth sounder
- Trac Vision M5 SAT TV
- Icom M604 VHF
- 2-110Volt Spreader lights molded in
- Combination Nav/Anchor lights
- Red recessed light
- Nav lights molded in hardtop
- Garmin GMI10
- HR1012 remote spotlight
- Simrad AP26 autopilot
- Muir remote windlass control with chain counter
- Pyle monitor with engine room camera
- QC trim tabs
- Twin disc controls synch/troll
- Bow and stern thruster control by side power
- Underwater lights

Deck Equipment

- Anchor winch vertical with overload protection circuit breaker, suit rope and chain, up and down foot switches and remote to helm
- Rails port & starboard of flybridge above window for safe passage to forward deck
- Sea water wash down tap at anchor locker
- Anchor locker with watertight bulkhead to cabin, access on deck
- Bow roller stainless steel self-loading - thru bowsprit, heavy duty

Cockpit

The Teak laid swim platform, cockpit, side steps, and saloon entry step offer a rich classic look. The large open cockpit offers plenty of room, for fishing or entertaining.

- Cockpit and floor hatches have molded gutters that drain overboard at the stern
- Double action manual bilge pump for engine room in cockpit locker
- Grab rails to assist access to side decks
- Lighting spotlights, overhead and courtesy
- Shore water connection with pressure regulator

- Sea-water Wash down
- Cockpit Electronic Controls with bow and stern thruster control, stern thruster new 2016
- Live bait tank in transom
- Cockpit hatches with heavy-duty stainless steel lock downs with gas struts for lazarette storage and bilge access
- Fresh water shower hot and cold
- Refrigerated cabinet portside, top loading with lid and gas strut (DC)
- Sink
- Mezzanine style cushions
- Steps to side deck port & starboard
- Freshwater wash down
- Glendinning cablemaster for shore cord
- Teak table with stainless steel pedestal
- 6 rod holders in coaming board

Electrical

Generator - Upgraded 27.5kw with sound shield, remote stop/start diagnostic, hour meter with 2230 hours. Completely renovated in 2017

- Batteries - independent start (x4), house (x2) and genset start, new 2017
- Battery paralleling system
- Electrical control centre with back lighting
- Battery chargers, automatic-70 AMP/12VDC and 20 AMP/24VDC
- Bonding system, to all metallic hull fittings with zinc anode including galvanic isolator
- Engine monitoring including instrumentation, alarms and hour meters with 1735 hours
- System monitoring panel to helm for bilge pumps and navigation lights
- Shoreline electrical inlet (AC) Glendinning (220V/50amp) (Split 2 x 110v)

Flybridge

Air Conditioned Enclosed Bridge, 3 sided glass enclosure with opening side windows and soft aft enclosure. Sun covers for windows, windshield wipers with washers. Wet bar and fridge.

- Air conditioning 1X36,000 BTU, new 2016
- Hot & cold tap at sink
- Lighting: Overhead, courtesy and red night light
- 2nd station starboard aft of flybridge
- Storage tray to suit 10 glasses, rubbish bin under
- Spiral stairs to salon
- Refrigerator (12V)
- Flybridge teak table
- Stidd type helm chairs

- Stidd type passenger chair
- L-shaped lounge with teak table that converts to bed
- Aft facing bench seat
- Rupp outriggers with flybridge release
- Center rigger
- 6 rod holders on back rail

Aft Control Station

- Steering, full controls
- Start/stops
- Bow and stern thruster controls
- Icom VHF M422, new 2016

Mechanical

Twin C18 Caterpillars (1015HP) with 1735 hours

- Acoustic & thermal insulation
- Emergency rudder locking pins
- Engine fresh water cooling system
- Engine room flowcoated white
- Exhaust system - with water separator system for generators
- Fiberglass aqualift exhaust system for engines, underwater exhausts
- Fire suppression system for engine room, manual controls to helm
- Bow and stern thruster
- Oil change system main engines, gearboxes & generator
- Shafts duplex stainless (2) dripless seals
- Trim tabs, Electro-hydraulic dual ram
- Water separating venting system for engine air intakes
- Air conditioning: 2X36,000 BTU(upgraded Saloon and Flybridge), 16,000 BTU and 10,000 BTU, all A/Cs new 2016
- External & internal seawater strainers for main engines, generator (as installed) & air conditioning (as installed) water intakes
- Fresh water tap & hose set in engine room
- Fuel shut-off valves with emergency remote to cockpit
- Fuel tank, GRP coated in fire retardant white, 977 US Gallons (approx)
- Fuel filters/water separator for engines & generator, dual to main engines
- Solid fiberglass bottom
- Vinylester resin barrier coat
- Watertight collision bulkhead forward
- Independent compartments throughout hull
- Solid keel, chines and bottom

Exclusions

Fighting chair, dinghy and davit

Remarks

Extremely clean Enclosed Bridge 51 Riviera in the US market. This sought after model features interior stairs to a yacht styled air-conditioned, enclosed flybridge. Glass enclosure on three sides with a New strataglass enclosure aft, this 51 shines inside and out. FLIR System, 3-Garmin 7000 Series Displays-new in 2012, Sat TV, Bow and Stern Thruster and so much more.

New or Updated

All new A/C units, 2016

Renovated generators, 2017

Bottom paint, 2016

Prop speed, 2016

Stern thruster, 2016

New batteries, 2016

Исключения

При продаже яхты исключаются личные вещи владельца.

Отказ от ответственности

Компания предоставляет описание судна или яхты добросовестно, но не может гарантировать точность этой информации, а также не ручается за техническое состояние. Покупатель должен проинструктировать своих агентов или оценщиков исследовать представленную информацию более подробно, по собственному желанию. Продажа судна или яхты, изменение цены или снятие с продажи будет происходить без предварительного уведомления.

ФОТОГРАФИИ

Salon



Salon



Salon



Dinette



Galley



Galley



Companionway



Master Stateroom



Master Stateroom



Master Stateroom



Master Head



VIP Stateroom



VIP Stateroom



Guest Stateroom



Guest Head



Stairway



Helm Station



Helm Station



Helm Station



Helm Station



Helm Seating



Flybridge



Flybridge



Flybridge



Bridge Deck

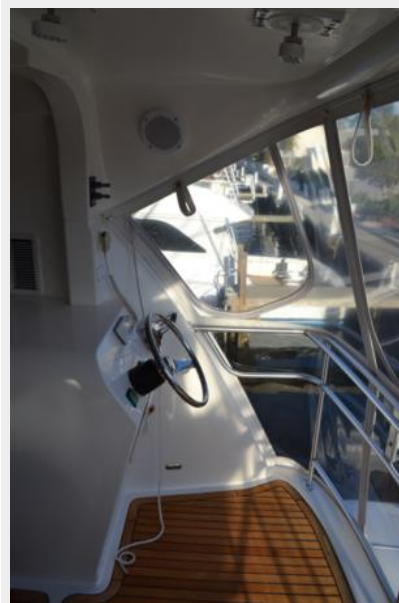
Bridge Deck Seating



Bridge Deck



Aft Control Station



Cockpit



Aft Station



Скокpit



Скокpit



Скокpit



Скокpit



Engine Room



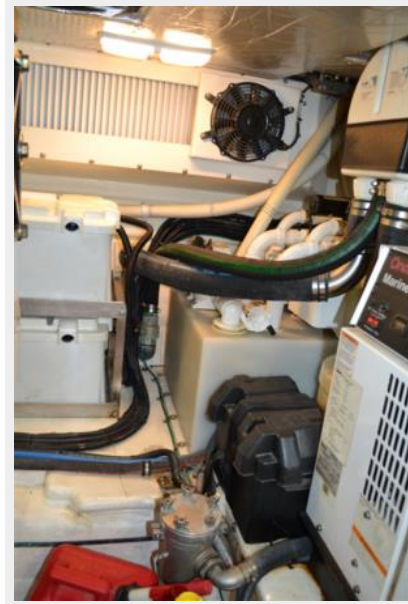
Engine Room



Engine Room



Engine Room



Engine Room



Engine Room



Engine Room



Foredeck



Foredeck



КОНТАКТЫ

Андрей Шестаков (Andrey Shestakov) – ведущий яхтенный брокер отдела продаж яхт и судов компании Shestakov Yacht Sales Inc. Официальный представитель Shestakov Yacht Sales Inc. для русскоговорящих клиентов в центральном офисе компании в Майами/Форт Лодердейл/Флорида/США.

Контактная информация

Email: andrey@shestakovyachtsales.com

Web: shestakovyachtsales.com

Телефоны

Краснодарский край: **+7(918)465-66-44**

США, Майами, Флорида: **+1(954)274-4435**

Время работы

Понедельник – Суббота: **9:00 - 21:00**
EDT

Воскресенье: **Закрето**

Адрес



Harbour Towne Marina, 850 NE 3rd St,
STE 213, Dania, FL 33004