

ECOS — SEAFARER YACHTS



Builder: SEAFARER YACHTS

Year Built: 1971

Model: Sloop

Price: PRICE ON APPLICATION

Location: United States

LOA: 36' 4" (11.07m)

Beam: 10' 6" (3.20m)

Max Draft: 4' 6" (1.37m)

Our experienced yacht broker, Andrey Shestakov, will help you choose and buy a yacht that best suits your needs **Ecos — SEAFARER YACHTS** from our catalogue. Presently, at Shestakov Yacht Sales Inc., we have a wide variety of yachts available on our sale's list. We also work in close contact with all the big yacht manufacturers from all over the world.

If you would like to buy a yacht **Ecos — SEAFARER YACHTS** or would like help answering any questions concerning purchasing, selling or chartering a yacht, please call **+1(954)274-4435**

TABLE OF CONTENTS

TABLE OF CONTENTS	2
SPECIFICATIONS	3
Overview	3
Basic Information	4
Dimensions	5
Speed, Capacities and Weight	5
Accommodations	5
Hull and Deck Information	5
Engine Information	5
PHOTOS	6
CONTACTS	7
Contact details	7
Telephones	7
Office hours	7
Address	7

SPECIFICATIONS

Overview

Classic charm with all the modern upgrades! If you've dreamed of owning a boat with a stunning sheer and overhangs that also serves as a great cruising and liveboard boat! "Ecos" is truly a small ship.

The Seafarer 36C is a classic Phil Rhodes design, from the time when the lines meant everything. She has a beautiful sweeping hull, but what sets her apart is the large cabin that made her, in addition to being a perfect sailing yacht, a perfect cruiser and liveboard as well. Her owners have cared for her meticulously, adding many modern upgrades but also keeping with tradition and preserving her as she was meant to be. Some of her features include:

- **Custom stainless steel arch with solar panels**
- **Windvane self steering**
- **Beefed up exterior chainplates**
- **All chainplates replaced and rebidged, standing rigging replaced**
- **New running rigging**
- **Wind generator**
- **All lines run to cockpit and labeled for easy singlehanded sailing**
- **Parkay flooring**
- **Autopilot**
- **Radar**
- **Completely remodeled head**
- **12 V refrigeration**
- **Inverter**
- **Bronze opening ports**
- **Perkins naturally aspirated freshwater cooled 4108 very well maintained**
- **Seacocks replaced where needed**
- **All new wiring**
- **Bose speakers**
- **Bench vise**
- **Many many tools and spare parts**
- **Dinghy and outboard**
- **All sails in great condition**

This is truly a special boat--perfect for someone who appreciates design and good lines, but also wants to be comfortable.

Boat Name Ecos Specs Builder: Seafarer Yachts Designer: Phil Rhodes Keel: Full Dimensions
LOA: 36 ft 4 in Beam: 10 ft 6 in LWL: 26 ft 3 in Maximum Draft: 4 ft 6 in Displacement: 16350 lbs
Ballast: 5500 lbs Engines Engine 1: Engine Brand: Perkins Engine Model: 4108 Engine Type:
Inboard Engine/Fuel Type: Diesel Engine Power: 50 HP Tanks Fresh Water Tanks: (75 Gallons)

Fuel Tanks: (35 Gallons) Accommodations Number of single berths: 2 Number of double berths: 2 Number of cabins: 1 Number of heads: 1 Seating Capacity: 6 Electronics VHF Depthsounder Log-speedometer Radar Wind speed and direction Autopilot Plotter GPS Compass Navigation center Sails Battened mainsail Furling genoa Rigging Steering wheel Inside Equipment Hot water Refrigerator Marine head Battery charger Fresh water maker Oven Manual bilge pump Electric bilge pump Electrical Equipment Shore power inlet Inverter Outside Equipment/Extras Swimming ladder Davits Tender Solar panel Outboard engine brackets Wind generator Manual windlass

Accommodations

This boat has an amazing amount of space packed into a neat and tidy package. The two-level interior and the large opening portholes add a sense of spaciousness. Upon entering the companionway, you're met with the upper level, with a quarterberth to starboard and nav station to port. Both are large and generous. The engine is below this upper level, with good all-round access.

Stepping down, you are met with a generous dinette to port and a large and well-equipped galley to starboard. The galley features a propane stove and open, double stainless sinks, and 12 Volt refrigeration. The cabin is made cozy by a propane heater.

The head has been refinished, and is large and clean, with a shower and all the space you need. And the v-berth is lined with luxurious teak and is large as well.

This is a very comfortable boat for its size and dimensions!

Broker's Notes

I have always had a weakness for Rhodes designs, but typically space is sacrificed for the long overhangs and sweeping sheers. Not so in this boat! This really is a unique and stunning design. Call me at 305-807-4096!

Basic Information

Category: Sloop

Sub Category: Sloop

Model Year: 1971

Year Built: 1971

Country: United States

Dimensions

LOA: 36' 4" (11.07m)

LWL: 26' 3" (8.00m)

Beam: 10' 6" (3.20m)

Max Draft: 4' 6" (1.37m)

Speed, Capacities and Weight

Displacement: 16350 Pounds

Water Capacity: 75 Gallons

Fuel Capacity: 35 Gallons

Accommodations

Total Cabins: 1

Total Berths: 4

Total Heads: 1

Hull and Deck Information

Hull Material: Fiberglass

Engine Information

Engines: 1

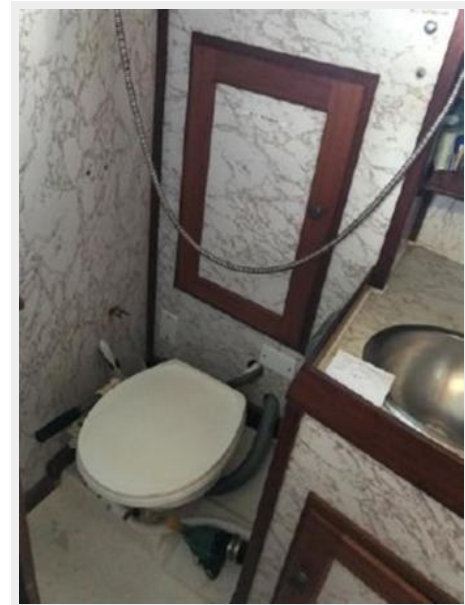
Manufacturer: Perkins

Model: 4108

Engine Type: Inboard

Fuel Type: Diesel

PHOTOS



CONTACTS

Andrey Shestakov, leading yacht broker of the sales department of Shestakov Yacht Sales Inc. Shestakov Yacht Sales Inc., the official representative of the Miami/Fort Lauderdale FL headquarters.

Contact details

Email: andrey@shestakovyachtsales.com

Web: shestakovyachtsales.com/en/

Telephones

USA: +1(954)274-4435

Office hours

Monday – Saturday: **9:00 - 21:00** EDT

Sunday: **closed**

Address



Harbour Towne Marina, 850 NE 3rd St,
STE 213, Dania, FL 33004