

## **SILVER WIND — ISA YACHTS**



**Builder:** [ISA YACHTS](#)

**Model:** Motor Yacht

**LOA:** 143' 2" (43.63mm)

**Max Draft:** 5' 2" (1.55mm)

**Cruise Speed:** 26 Knots Kts. (30 MPH)

**Max Speed:** 32 Knots Kts. (37 MPH)

Our experienced yacht broker, Andrey Shestakov, will help you choose and buy a yacht that best suits your needs **Silver Wind — ISA YACHTS** from **our catalogue**. Presently, at **Shestakov Yacht Sales Inc.**, we have a wide variety of yachts available on **our sale's list**. We also work in close contact with all the big **yacht manufacturers** from all over the world.

If you would like to buy a yacht **Silver Wind — ISA YACHTS** or would like help answering any questions concerning purchasing, selling or chartering a yacht, please call **+1(954)274-4435**

# TABLE OF CONTENTS

TABLE OF CONTENTS	2
SPECIFICATIONS	4
Overview	4
Basic Information	4
Dimensions	4
Speed, Capacities and Weight	4
Accommodations	5
Hull and Deck Information	5
Engine Information	5
PHOTOS	6
2 Main deck entrance and circular dining.jpg	6
1.1 ISA Yachts 140.jpg	6
4 Main salon.jpg	6
3 Main salon.jpg	6
6 Master vanity office.jpg	6
5 Master.jpg	6
7 Master bathroom.jpg	7
8 Master bathroom Shower.jpg	7
11 Lower deck vip 2.jpg	7
10 lower deck VIP.jpg	7
12 Lower deck double.jpg	7
13 Lower deck double bathroom.jpg	7
14 Bridge.jpg	8
19 Aft.jpg	8
GA 1 Profile	8
GA2 sun deck	8
GA3 Main Deck	8
GA4 Lower Deck	8

---

CONTACTS	9
Contact details	9
Telephones	9
Office hours	9
Address	9

---

# SPECIFICATIONS

---

## Overview

---

Freshly repainted and refitted to optimise her interior with a new 5th guest cabin. Ready for a new owner to enjoy her fabulous style. Currently based in Northern Italy and available for viewings by appointment.

A class apart, Silver Wind turns head in every port with her sleek lines and impresses all who step aboard with an interior design and quality that is a cut above. An unbeatable combination of ISA naval architecture & build and Nuvolari & Lenard interior.

Silver Wind accommodates 10/11 guests in a spacious master, 1 VIP, 2 double cabin and 1 twin cabin, making her ideal for cruising with friends. Powered by MTU engines she has a cruising speed of 26 knots and can a top speed of 32 knots.

## Basic Information

---

**Category:** Motor Yacht

**Sub Category:** Mega Yacht

**Model Year:** 2014

## Dimensions

---

**LOA:** 143' 2" (43.63mm)

**LWL:** 119' 8" (36.45mm)

**Max Draft:** 5' 2" (1.55mm)

## Speed, Capacities and Weight

---

**Cruise Speed:** 26 Knots Kts. (30 MPH) **Cruise Speed Range:** 540

**Max Speed:** 32 Knots Kts. (37 MPH) **Max Speed Range:** 500 Kts.

**Water Capacity:** 6900 Gallons

**Fuel Capacity:** 8189.33 Gal Gallons

**Fuel Consumption:** 396.26 Gal Gallons

---

## Accommodations

---

**Total Cabins:** 5

**Total Berths:** 11

**Sleeps:** 11

**Crew Cabin:** 8

**Crew Berths:** 8

**Crew Heads:** 4

---

## Hull and Deck Information

---

**Hull Material:** GRP

**Deck Material:** Teak

**Hull Configuration:** Planing

**Hull Color:** Silver

**Hull Designer:** ISA

**Exterior Designer:** Andrea Vallicelli

**Interior Designer:** Nuvolari Lenard

---

## Engine Information

---

**Engines:** 2

**Manufacturer:** MTU

**Engine Type:** Inboard

**Fuel Type:** Diesel

# PHOTOS

**1.1 ISA Yachts 140.jpg**



**2 Main deck entrance and circular dining.jpg**



**3 Main salon.jpg**



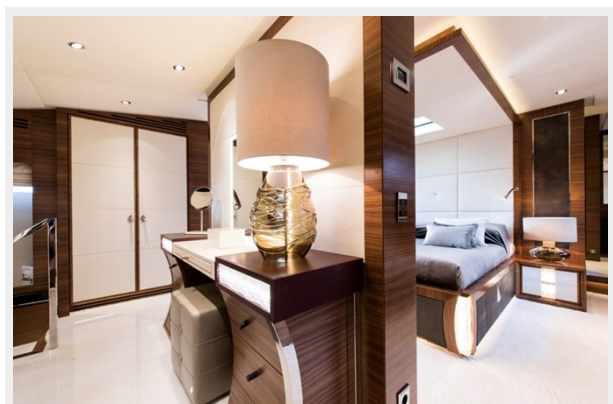
**4 Main salon.jpg**



**5 Master.jpg**



**6 Master vanity office.jpg**



**7 Master bathroom.jpg**



**8 Master bathroom Shower.jpg**



**10 lower deck VIP.jpg**



**11 Lower deck vip 2.jpg**



**12 Lower deck double.jpg**



**13 Lower deck double bathroom.jpg**



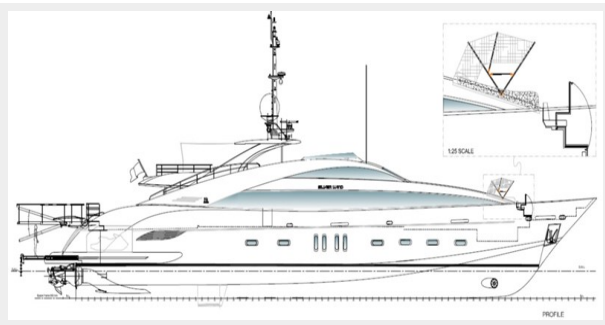
**14 Bridge.jpg**



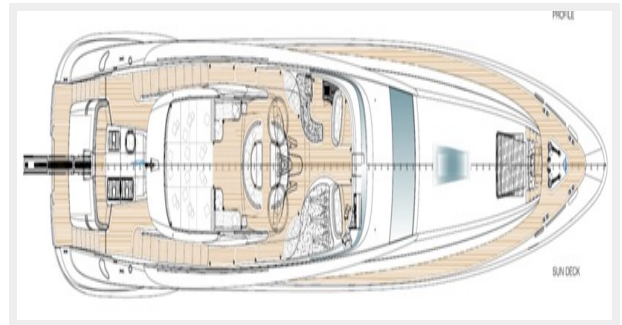
**19 Aft.jpg**



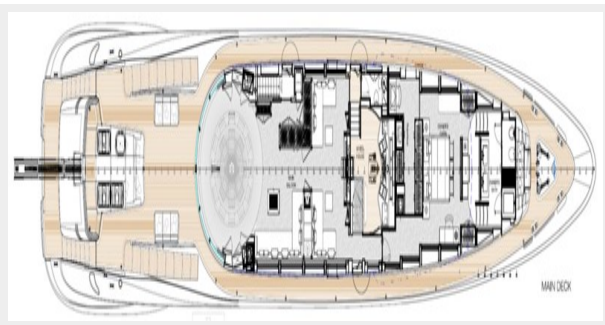
**GA 1 Profile**



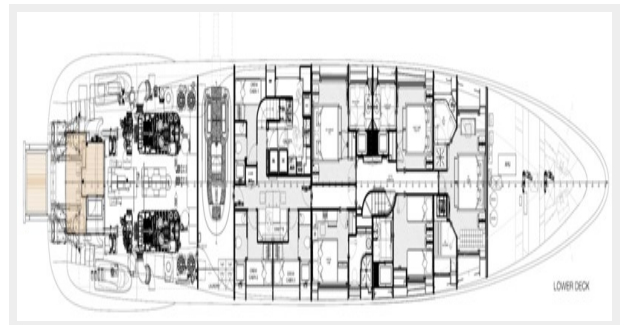
**GA2 sun deck**



**GA3 Main Deck**



**GA4 Lower Deck**





# CONTACTS

---

Andrey Shestakov, leading yacht broker of the sales department of Shestakov Yacht Sales Inc. Shestakov Yacht Sales Inc., the official representative of the Miami/Fort Lauderdale FL headquarters.

## Contact details

---

Email: **andrey@shestakovyachtsales.com**

Web: [shestakovyachtsales.com/en/](https://shestakovyachtsales.com/en/)

## Telephones

---

USA: **+1(954)274-4435**

## Office hours

---

Monday – Saturday: **9:00 - 21:00** EDT

Sunday: **closed**

## Address

---



Harbour Towne Marina, 850 NE 3rd St, STE 213, Dania, FL 33004