

WATCH AFT — MONTE FINO



Судостроитель: MONTE FINO

Год постройки: 1999

Модель: Моторная яхта

Цена: **ЦЕНА ЯХТЫ ПО ЗАПРОСУ**

Местонахождение: United States

Длина общая: 82' 0" (24.99m)

Ширина: 20' 0" (6.10m)

Мин. осадка: 5' 0" (1.52m)

Макс. осадка: 5' 0" (1.52m)

Крейс. скорость: 17 Kts. (20 MPH)

Макс. скорость: 20 Kts. (23 MPH)

Купить **WATCH AFT — MONTE FINO** а также выбрать подходящую вам яхту из нашего каталога яхт вам поможет опытный яхтенный брокер Андрей Шестаков. На сегодняшний день компания **Shestakov Yacht Sales Inc.** имеет большое количество яхт в собственном списке продаж, а также тесно сотрудничает со всеми крупными яхтенными производителями по всему миру.

Для того чтобы купить яхту **WATCH AFT — MONTE FINO** а также проконсультироваться по любому вопросу связанному с покупкой, продажей, чартером яхт позвоните по телефону **+7(918)465-66-44**.

ОГЛАВЛЕНИЕ

ОГЛАВЛЕНИЕ	2
ХАРАКТЕРИСТИКИ	4
Обзор	4
Основная информация	4
Размеры	4
Скорость, вместимость и масса	4
Размещение	5
Корпус и палуба	5
Информация о двигателе	5
ПОДРОБНОЕ ОПИСАНИЕ	6
Salon	6
Galley	6
Master Stateroom - Aft Full Beam	7
Master Head	7
Companionway Outside Master	7
Guest Stateroom 1 - Forward to Starboard	8
Guest Head - Starboard	8
Guest Stateroom 2 - Port	8
Guest Head	9
Crew Quarters or Guest Forward	9
Crew Lounge - Galley & Laundry	9
Crew or Guest Head	10
Aft Deck	10
Day Head	11
Skylounge and Helm	11
Electronics	12
Hull and Deck	12
Upper Aft Deck	13

Deck Forward	13
Electrical	13
Engine Room and Mechanical	13
Exclusions	14
Refit	14
Исключения	18
Отказ от ответственности	18
ФОТОГРАФИИ	20
КОНТАКТЫ	29
Контактная информация	29
Телефоны	29
Время работы	29
Адрес	29

ХАРАКТЕРИСТИКИ

Обзор

This yacht was extensively refit two years ago and shows superbly. A complete list of the improvements is in the section "Refit". This is a vessel that must be seen by anyone looking for a truly turn key 80-90 foot Skylounge yacht for under one million dollars.

Damage Disclosure: While docked at West End, Grand Bahama Island the vessel "Watch Aft" was struck on the port side amidships above the waterline by another vessel attempting to dock. There was no water intrusion and the vessel was taken to Fort Pierce, Florida where it was repaired in accordance with good marine practices.

Основная информация

Тип судна: Моторная яхта

Модельный год: 1999

Год постройки: 1999

Страна: United States

Размеры

Длина общая: 82' 0" (24.99m)

Ширина: 20' 0" (6.10m)

Мин. осадка: 5' 0" (1.52m)

Макс. осадка: 5' 0" (1.52m)

Скорость, вместимость и масса

Крейс. скорость: 17 Kts. (20 MPH)

Макс. скорость: 20 Kts. (23 MPH)

Водоизмещение: 238000 Pounds

Вместимость воды: 600 Gallons

Объем топливного бака: 1900 Gallons

Размещение

Всего кают: 4

Каюты экипажа: 2

Койки экипажа: 4

Спальных мест экипажа: 4

Комм. состав экипажа: 1

Корпус и палуба

Материал корпуса: Fiberglass

Информация о двигателе

Двигатели: 2

Производитель: Caterpillar

Модель: 3412

Тип двигателя: Inboard

Тип топлива: Diesel

ПОДРОБНОЕ ОПИСАНИЕ

Salon

- Teak and Holly Sole with carpet over
- Leather sofas (3)- Cream color
- Blinds
- Overhead lighting
- Overhead Babb speakers
- Stairway to master stateroom
- Electrical panel
- Entertainment center-TEAC receiver/Sony DVD/Sony VHS player
- TV-recessed in counter-pop up
- SAT TV
- Marine Air A/C
- End tables at sofas
- Two circular coffee/drink tables
- Electrical outlets
- A/C vents
- Decorative lamps
- Burl wood inlay on teak counter tops

Galley

- Counter top w/ recessed Porcelain sink & designer faucet
- Teak & holly sole-high gloss
- GE Profile refrigerator freezer w/ teak face
- GE Profile oven
- GE Profile microwave/convection oven
- GE Profile dishwasher
- GE Profile ceramic 4 burner cooktop
- Mirror backsplash
- Electrical outlets
- Door to port
- U shaped dinette forward
- Overhead lighting
- Overhead speakers
- Forward windshield w/ covers
- Panasonic 13" color TV w/ VCR
- Stairway to forward staterooms to starboard
- VDO water tank gauges

Master Stateroom - Aft Full Beam

- Large Stainless Steel Opening Window behind Island King Bed which opens on to cockpit
- Designer bedding and pillows
- Teak and Holly sole; high gloss
- Drawer space below berths
- Nightstands w/ 3 drawers
- Marine Air w/ digital controls
- Port lights both port and starboard
- Teak counter top w Burl wood inlay
- Overhead headliner w/ Burl wood inlay strips
- Lamps
- Overhead lighting
- Reading lights
- Overhead speakers
- Hanging lockers
- Drawer space
- Settee to starboard
- Panasonic TV w/ SAT TV
- Electrical outlets
- Vanity
- Entertainment center w/ stereo system
- En-suite head

Master Head

- Carpet over teak and holly
- Royal Flush head
- Jacuzzi tub and shower combo
- Port hole w/ curtain
- Granite counter top w/ molded sink & designer faucet
- Storage below vanity
- Mirrored medicine cabinet
- Cabinets above and below
- Towel racks
- Exhaust fan

Companionway Outside Master

- Access to engine room by large door
- Carpet
- Courtesy lights on steps

- Two large closets
- Teak hand rail
- Overhead lighting

Guest Stateroom 1 - Forward to Starboard

- Side by side berths
- Pullman berth
- Drawers below berths
- Padded headboards
- Designer bedding and pillows
- Carpet over teak and holly floors
- Headliner w/ Burl wood inlay strips
- Night stand w/ 3 drawers
- Television behind tambor door
- Overhead speakers
- Teak wood throughout
- Reading lights
- Hanging locker
- Port hole w/ drapes
- En-suite head

Guest Head - Starboard

- Carpet over teak and holly sole
- Royal Flush head
- Granite counter top w/ recessed sink & designer faucet
- Mirrored medicine cabinet
- Shower stall w/ teak grate sole
- Storage below vanity
- Overhead lights
- Port hole w/ drapes
- Stabilizer fin under floor access
- A/C vent
- Headliner w/ Burl wood trim strips
- Exhaust fan

Guest Stateroom 2 - Port

- Queen size island bed
- Designer bedding and pillows

- Night stands w/ lamps and drawers
- Port holes w/ curtains
- Carpet
- Headliner w/ Burl wood strips
- Cabinet storage
- Hanging locker
- Reading lights
- Overhead lighting
- Overhead speakers
- Marine Air A/C w/ digital controls
- Escape door to engine room
- En-suite head

Guest Head

- Marble counter top w/ molded sink and designer faucet
- Storage below vanity
- Royal Flush electric toilet
- Mirrored medicine cabinet
- Port hole
- Stall shower / teak grate floor
- Electrical outlet w/ GFI

Crew Quarters or Guest Forward

- In nose of boat/split staterooms P & S
- Over/under bunks on each side
- Bedding & pillows
- Overhead hatch each side
- Drawers and shelves
- Hanging lockers
- Carpet
- Privacy doors

Crew Lounge - Galley & Laundry

- Curved steps down to area forward
- Courtesy lighting in steps
- Large locker
- Carpet
- Dinette area

- Counter top w/ SS sink
- L shaped upholstered dinette
- Electrical outlets
- Sanyo refrigerator/freezer
- Magic Chef microwave
- Panasonic color TV
- Port holes w/ curtains
- Headliner w/ Burl wood strips
- Reading lights
- Maxwell windlass breakers
- Hanging lockers
- Drawers & storage cabinets
- GE washer/dryer
- Overhead lighting & speakers
- Marine Air A/C w/ digital controls
- Door to crew/guest head

Crew or Guest Head

- Royal Flush electric toilet
- Marble counter top w/ recessed porcelain sink
- Storage under vanity
- Mirrored medicine cabinet
- Electrical outlet
- Port hole
- Carpet
- Overhead lighting
- Stall shower

Aft Deck

- Teak decks/full walk around teak decks
- Aft deck furniture
- Heavy duty Stainless Steel salon door
- Storage area
- Maxwell 2200 windlass
- Washdown
- Steps up and down to swim platform
- Fresh water shower
- SS rails
- Window to master
- Access to lazarette

- Extended overhand for aft deck

Day Head

- Royal Flush electric head
- Granite counter top w/ molded sink & designer faucet
- Designer towel rack
- Storage under counter
- Teak & holly sole
- Overhead lighting
- Designer wall covering
- Exhaust fan

Skylounge and Helm

- CAT engine displays
- Carpet
- Electronics package
- Stidd chairs
- Settee
- Horn
- Rudder angle indicator
- CCTC monitor
- Trim tabs
- Windshield wipers
- Windshield covers
- Naiad controls
- Compass
- ACR spotlight controls (2)
- Engine controls Center, Port and starboard sides
- Bow thruster
- Wetbar w/ stools
- Panasonic TV
- Stereo
- Desk
- Sofa
- Two chairs
- Large windows
- Marine A/C w/ digital controls
- Access door to upper aft deck

Electronics

- Furuno 72 nm radar
- Garmin MFD (2 separate screens)
- Robertson AP300X autopilot
- Navman 7200 VHF radio
- Datamarine digital depth finder
- Computer navigation GPS
- AIS
- Satellite weather
- VHF (2)
- KVH Satellite TV Receiver
- New; all antennas (6)
- AirMar Weather
- GPS
- NMEA 2000
 - Alarm system
 - Weather
 - MFD interface
 - NMEA monitor
 - New depth sounder & transducer
 - Install 4 new cameras
- - New DC Power supply utilizing separate battery power for electronics with buss tie ability to main system
 - New air horn system including compressor
 - Loud hailer
 - Nav lights
 - Fusion Radio

Hull and Deck

- White hull sides
- Skylounge
- SS rails
- Teak decks
- Naiad stabilizers
- Trim tabs
- Boarding ladder P & S
- Twin plow anchors forward
- Maxwell windlass'
- Hydraulic davits

Upper Aft Deck

- SS Air Tech davits (2)
- Fiberglass non skid deck
- Viking 6 person liferaft
- Lounge chairs
- Speakers
- Door to lounge/aft deck

Deck Forward

- Teak decks
- Maxwell windlass'
- Salt water wash down
- Lounge seating forward w/ cushion/sunpad
- Anchor locker w/ chain

Electrical

- Onan diesel 25kW diesel generators (2) 5840/5135 hours
- 12V/24V/120V/240V system
- Shore cord w/ cablemaster
- Battery bank
- Battery charger
- Battery isolator

Engine Room and Mechanical

- Twin Caterpillar 3412 /1350 HP diesel engines
- ZF gears
- Twin Onan 25 kW diesel generators
- Fireboy FE 241 fire suppression bottles (2)
- Air compressor
- AC raw water pumps
- Hot water heater- 20 gallons
- Engine room blower
- Engine room vents
- Dripless shaft logs
- Overhead lighting
- Naiad stabilizers
- Naiad 302 stabilizer pump on starboard engine

- Cameras
- Steering pump on port engine
- Batteries & battery chargers
- Racor filters
- Fuel tanks (3 for total of 1,900 gals)
- Fuel transfer pump
- Bilge pumps
- Cablemaster bucket

Exclusions

Owner's personal effects are excluded from the sale.

Refit

Engine Room:

- Main Engines
 - Remove, overhaul all turbos
 - Remove and recon 24 injectors
 - Adjust all valves
 - Flush cooling system on both fresh and salt water systems, replace caps
 - Replace water hoses as required
 - Change seawater suction and discharge. Replace all hoses and clamps
 - Modify and repair exhaust system
 - Replace all fuel hoses
 - Replace electrical connection at ECU
 - Modify and replace all components to engine controls
 - Replace belts
 - Change all oil & filters
 - Clean and paint
 - Rewire primary electrical system
- Generators
 - Replace saltwater pumps
 - Replace belts
 - Replace exhaust elbows and entire exhaust system
 - Remove heat exchangers, clean and pressure test
 - Replace engine coolant
 - Replace belts and hoses as required
 - Change oil and filters
 - Adjust valves
 - Replace coolant caps
 - Remove corrosion and treat

- Remove and replace pumps and all associated systems
 - Fresh water (manifolds)
 - Toilet
 - Bilge – plus add new emergency bilge pump
- Water maker – installed new modular water maker
- Fuel lines and manifold fuel transfer system (primary / auxiliary)
- Paint engine room & engines
- Insulate exhaust pipes and new hoses and clamps.
- Modifications to generator installation; removal of all interior strainers, glass shut non-use thru-hulls
- Replace engine room deck plates w 3/8 diamond plate
- Repair pump shelf
- All plumbing in engine room replaced
- Replace all blowers
- Overhaul main engines fuel filter assembly
- Replace generator fuel filter assembly
- Steering – replaced steering reservoir, cooler, and all steering hoses located in engine room. Reconfigured hydraulic plumbing

Electrical:

- All batteries on vessel replaced with AGM including windlass, aft windlass, stern thruster, electronics batteries, house and inverter batteries, engine batteries, generator batteries
- Replaced AC/DC power inverter and associated wiring
- Engine room panel – New panels re-wired, making extensive modifications and changes to poorly designed electric conversion system
- Inlet transformer – 100Amp shore power & cable master. Original inlets removed, Hull inlet glassed over, original isolation transformer removed. 100 Amp Iso boost transformer with Glen Denning and power cable fabricated and installed in new location.
- Main panel changes – modification to 24V lighting system using HF power supplies
- Several changes made to main power panel to improved function of overall system

Deck:

- Teak removal on entire boat with exception of lower aft deck seating
- Fiberglass under deck was prepared by grinding and relaminating, then faired to accept new deck
- Areas of special note:
 - Cockpit areas were relaminated and made ready for new deck
 - Hatches / Doors were cut open, repaired, relaminated, filled, faired and painted.
- Swim platform was peeled, then additionally, fabricated fiberglass tubing was used to

support stanchion rails. Platform repainted prior to deck installation.

Air Conditioning:

- Replace 3 chiller units
- Design, fabricate and install manifold system
- Repair multiple air handlers
- Clean all air handlers and filters
- Replace circ pump
- Replace sea water pump

Haul Out:

- Bottom aggressively sanded, Epoxy primed as required, and repainted
- Zincs replaced
- Scoop strainers removed, replaced with Sendure type
- Thrusters Reconditioned
 - Stern thruster removed in entirety and overhauled (external oil reservoir added)
- Stabilizers removed, resealed, disassembled actuator assembly and replaced all bearings and seals. Replaced hydraulic hoses as required
- Trim Tabs sandblasted and Epoxy coated then painted
- Underwater lights repaired
- Rudders removed, reconditioned, installed and entire steering gear overhauled, grease fittings added to rudder stuffing boxes
- Prop speed propellers
- Spurs removed and replaced
- Several old unused thru hull fittings were removed and hull was relaminated

Cosmetic:

- Gelcote restoration – boat surfaces that were not painted were wet sanded and buffed
- Gelcote repairs – areas on superstructure have been repaired, primarily in the areas of the deck and upper boat deck. These areas had gelcote removed to substrate, fiberglass repairs made as required. Areas were then filled faired and painted with Imron MS600 to match.
- Hull had multiple scratches and these were repaired by filling, fairing, painting and blending.
- All exterior deck lights removed and replaced

Fabrication:

- Following items were fabricated by Gillen Diesel and Marine Services, Ft. Lauderdale
 - Diesel fuel transfer manifold
 - Water system
 - Aluminum Mast
 - Glen Denning mount
 - Aft deck table repair / install
 - Boarding ladder modifications
 - Exhaust cooling water distribution manifold
 - Misc. mounting brackets
 - Water heater mount

Electronics:

- Remove and Replace all helm electronics
 - AIS
 - Garmin MFD
 - Auto pilot
 - Satellite weather
 - VHF (2)
 - Radar
 - KVH
 - Replace all antennas (6)
 - AirMar Weather
 - GPS
 - NMEA 2000
 - Alarm system
 - Weather
 - MFD interface
 - NMEA monitor
 - New depth sounder & transducer
 - Install 4 new cameras
 - Design and install DC Power supply utilizing separate battery power for electric with buss tie ability to main system
 - New air horn system including compressor
 - Loud hailer
 - Cover and recut new panel
 - Nav lights
 - Fusion Radio

Interior:

- Remove old TV's and AV system – Install new in Salon, Master, crew, galley and bridge deck including new speakers as required
- Replace all lights with LED interior and exterior
- Repair broken latches and hinges
- Repair icemaker in Pilot House

Miscellaneous:

- Rig fabricate mast
- Move life raft
- Secure boarding ladders (both)
- Upper bridge deck; install new floors
- Repair bridge deck refrigerator including ice maker
- Repair Galley ice maker
- Replace all applicable filters in entire boat
- Modify and install outdoor grill on boat deck (paint to match)
- All safety items including fire extinguishers, life saving devices, liferaft, etc. were inspected to comply to requirements.
- Lazerette –
 - All floor plates replaced
 - Windlass overhauled
 - New batteries and battery cables installed
 - Lights replaced
 - Electrical system repaired (110V, light system, sounding wires, etc.)
 - Multiple drain hoses replaced with clamps, etc.
 - Vent fan was installed and ventilation port added
- Fwd deck windlass serviced, 1 motor replaced, all chain removed, marked 25' intervals, replace new chain one side, drain replaced in chain locker
- Bilge pumps – all replaced

Исключения

При продаже яхты исключаются личные вещи владельца.

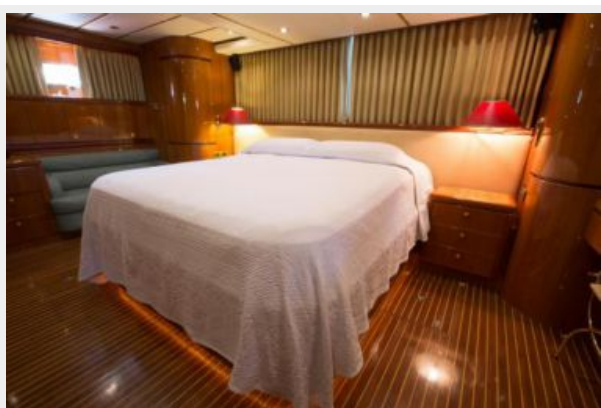
Отказ от ответственности

Компания предоставляет описание судна или яхты добросовестно, но не может гарантировать точность этой информации, а также не ручается за техническое состояние. Покупатель должен проинструктировать своих агентов или оценщиков исследовать представленную информацию более подробно, по собственному желанию. Продажа судна или яхты, изменение цены или снятие с продажи будет происходить без

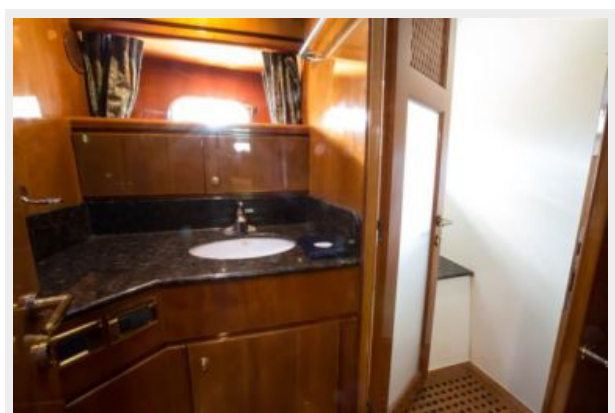
предварительного уведомления.

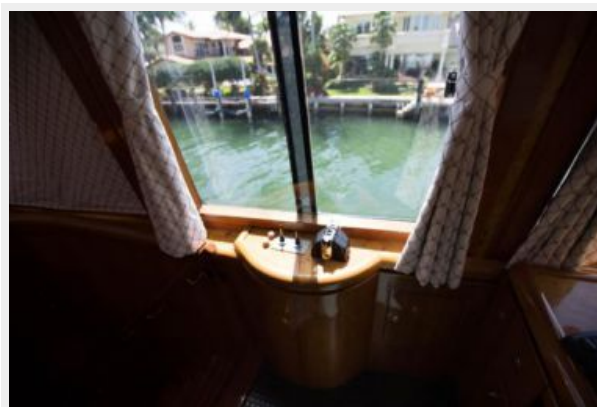
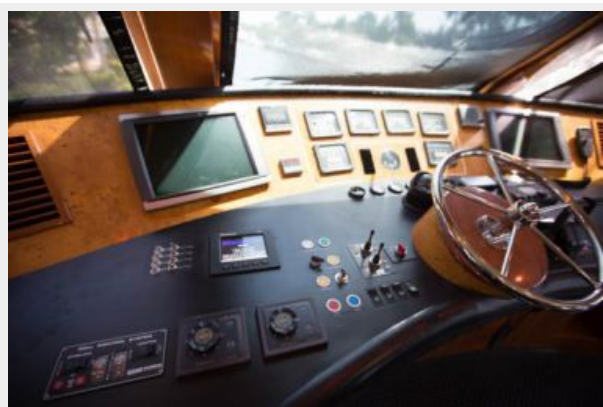
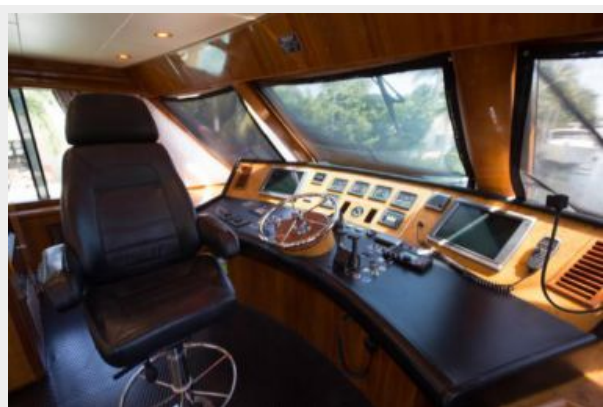
ФОТОГРАФИИ

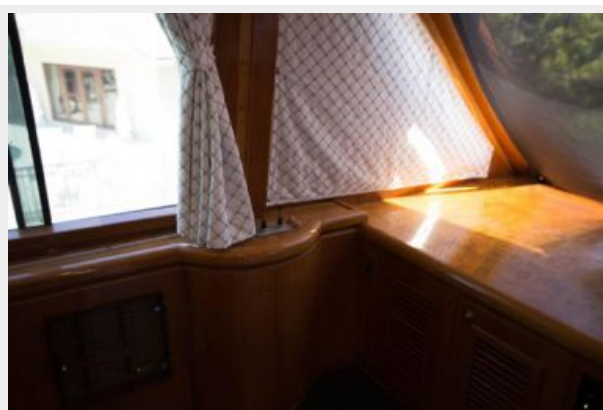


















КОНТАКТЫ

Андрей Шестаков (Andrey Shestakov) – ведущий яхтенный брокер отдела продаж яхт и судов компании Shestakov Yacht Sales Inc. Официальный представитель Shestakov Yacht Sales Inc. для русскоговорящих клиентов в центральном офисе компании в Майами/Форт Лодердейл/Флорида/США.

Контактная информация

Email: andrey@shestakovyachtsales.com

Web: shestakovyachtsales.com

Телефоны

Краснодарский край: **+7(918)465-66-44**

США, Майами, Флорида: **+1(954)274-4435**

Время работы

Понедельник – Суббота: **9:00 - 21:00**
EDT

Воскресенье: **Закрито**

Адрес



Harbour Towne Marina, 850 NE 3rd St,
STE 213, Dania, FL 33004