

SHORE BREAK V — CARVER



Builder: CARVER

Year Built: 2005

Model: SHELBY

Price: PRICE ON APPLICATION

Location: United States

LOA: 45' 0" (13.72m)

Beam: 14' 11" (4.55m)

Min Draft: 3' 7" (1.09m)

Max Draft: 3' 7" (1.09m)

Our experienced yacht broker, Andrey Shestakov, will help you choose and buy a yacht that best suits your needs **SHORE BREAK V — CARVER** from our catalogue. Presently, at Shestakov Yacht Sales Inc., we have a wide variety of yachts available on our sale's list. We also work in close contact with all the big yacht manufacturers from all over the world.

If you would like to buy a yacht **SHORE BREAK V — CARVER** or would like help answering any questions concerning purchasing, selling or chartering a yacht, please call **+1(954)274-4435**

TABLE OF CONTENTS

TABLE OF CONTENTS	2
SPECIFICATIONS	3
Overview	3
Basic Information	3
Dimensions	3
Speed, Capacities and Weight	4
Accommodations	4
Hull and Deck Information	4
Engine Information	4
DETAILED INFORMATION	5
Key Features & Upgrades	5
Vessel Walkthrough	5
Exclusions	6
Disclaimer	6
PHOTOS	7
CONTACTS	15
Contact details	15
Telephones	15
Office hours	15
Address	15

SPECIFICATIONS

Overview

"SHORE BREAK V" is an Immaculate, Professionally Maintained 45 Voyager with only 400 Original Hours on her Twin Volvo Diesels.

Loaded with Upgrades Including: Flybridge Hard Top + Flybridge A/C, Bow & Stern Thrusters, Handheld Yacht Controller, Davit for Tender, All New Batteries & Chargers, New Custom Linens + Much More!!

******Much Desired 2 Stateroom / 2 Head Layout with Dual Helm Stations******

All Maintenance is Up to Date and "SHORE BREAK V" is ready to Head to the Islands on a Moment's Notice. You won't find a Nicer 45 Voyager anywhere!!

Basic Information

Category: SHELBY

Sub Category: Pilothouse

Model Year: 2005

Year Built: 2005

Country: United States

Vessel Top: Hardtop

Fly Bridge: Yes

Cockpit: Yes

Dimensions

LOA: 45' 0" (13.72m)

Beam: 14' 11" (4.55m)

Min Draft: 3' 7" (1.09m)

Max Draft: 3' 7" (1.09m)

Speed, Capacities and Weight

Displacement: 39600 Pounds

Water Capacity: 150 Gallons

Holding Tank: 80 Gallons

Fuel Capacity: 560 Gallons

Accommodations

Total Cabins: 2

Total Heads: 2

Hull and Deck Information

Hull Material: Fiberglass

Hull Color: White

Engine Information

Engines: 2

Manufacturer: Volvo

Model: TAMD75P

Engine Type: Inboard

Fuel Type: Diesel

DETAILED INFORMATION

Key Features & Upgrades

- **"SHORE BREAK V" is a lightly used vessel with 400 Original Hours on her Twin Volvo Diesels**
- **Professionally Maintained in a Private Marina in Jacksonville, FL**
- **Flybridge Hard Top**
- **Flybridge Air Conditioning**
- **Bow & Stern Thrusters**
- **NEW Handheld Yacht Controller (\$12k Option)**
- **Davit Crane for Tender**
- **Dual Helm Stations**
- **NEW Custom Linens in Master & VIP Staterooms**
- **NEW Batteries + NEW Battery Chargers**

Vessel Walkthrough

The 450 Voyager is a fly-bridge pilothouse motor yacht. The reason pilothouse boats are so popular today is simple....upper and lower helms are comfortable in any weather. The generous covered cockpit and walk-arounds make handling docking and handling lines safe and easy.

"SHORE BREAK V" can be boarded either from the large swim platform and stepping through the transformer door, or from a fixed dock at the cockpit.

Once in the hard-topped cockpit, molded steps lead to the bridge as well as molded steps leading to both Port and starboard walk-arounds. Plenty of room here for folding tables and chairs. A large cockpit deck hatch provides excellent engine room access, mechanics service workers and their fluids out of the salon interior.

A large stainless sliding door leads into the huge salon. Tasteful cherry cabinetry and mini blinds, port and starboard ultra-leather Flex Steel settees, high gloss cherry coffee table with folding leaves make this the perfect area to lounge. This area also features a full entertainment system with flat screen TV and theater audio and video system. The port settee is L shaped with 2 built in recliners while the starboard love seat features a large drawer underneath. Forward is the wet bar with sink and bottle and glass storage.

To starboard and up a few steps is the lower helm with a large U-shaped settee also in ultra-leather, fully adjustable helm seat within easy reach of electronics and engine controls. A side door provides fast access to the starboard side deck if docking from below.

To port is the full galley-up with stand-up refrigerator and freezer, granite counters, plenty of drawers and under counter storage.

Going forward from the galley and down 3 steps leads into the cabin common area. Both Staterooms are fitted with New Linens that were custom made for "SHORE BREAK V". The Master Stateroom is to starboard and features an island queen berth with custom interspersing mattress. High gloss cherry cabinetry, hanging lockers, large drawers and assorted storage areas throughout. A frosted door leads into the Master's Private Head with Stall Shower.

Forward of the common area is the VIP Stateroom featuring another island queen berth. A hanging locker and area under the bunk provide storage. There is private access to the Second Head from the VIP cabin.

Back again in the common area, to port is access to the Second Head, while aft and to starboard is a pantry/ large storage area that continues under the galley. This area can be used to store deck furniture, suit cases and other bulky items.

Exclusions

Owner's personal belongings.

Disclaimer

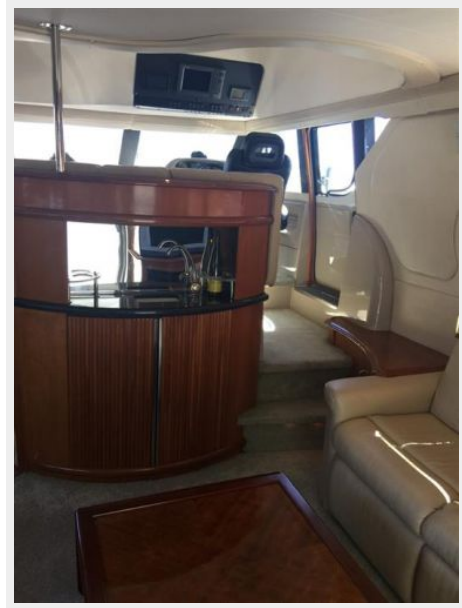
The Company offers the details of this vessel or yacht in good faith but cannot guarantee or warrant the accuracy of this information nor warrant the condition of the vessel. A buyer should instruct his representatives, agents, or his surveyors, to investigate such details as the buyer desires validated. This vessel or yacht is offered subject to prior sale, price change, or withdrawal without notice.

PHOTOS



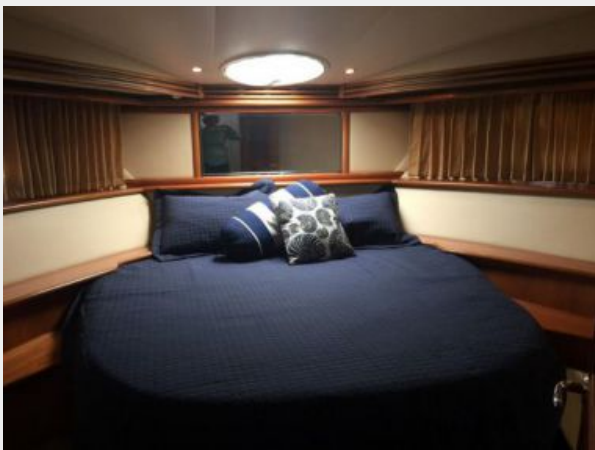














CONTACTS

Andrey Shestakov, leading yacht broker of the sales department of Shestakov Yacht Sales Inc. Shestakov Yacht Sales Inc., the official representative of the Miami/Fort Lauderdale FL headquarters.

Contact details

Email: andrey@shestakovyachtsales.com

Web: shestakovyachtsales.com/en/

Telephones

USA: +1(954)274-4435

Office hours

Monday – Saturday: **9:00 - 21:00** EDT

Sunday: **closed**

Address



Harbour Towne Marina, 850 NE 3rd St,
STE 213, Dania, FL 33004