

## MYSTERY — S2 YACHTS



**Builder:** S2 YACHTS

**Year Built:** 1978

**Model:** Cruising Sailboat

**Price:** PRICE ON APPLICATION

**Location:** United States

**LOA:** 30' 0" (9.14m)

**Beam:** 10' 3" (3.12m)

**Min Draft:** 4' 10" (1.47m)

Our experienced yacht broker, Andrey Shestakov, will help you choose and buy a yacht that best suits your needs **Mystery — S2 YACHTS** from our catalogue. Presently, at Shestakov Yacht Sales Inc., we have a wide variety of yachts available on our sale's list. We also work in close contact with all the big yacht manufacturers from all over the world.

If you would like to buy a yacht **Mystery — S2 YACHTS** or would like help answering any questions concerning purchasing, selling or chartering a yacht, please call **+1(954)274-4435**

# TABLE OF CONTENTS

TABLE OF CONTENTS	2
SPECIFICATIONS	4
Overview	4
Basic Information	4
Dimensions	4
Speed, Capacities and Weight	4
Hull and Deck Information	4
Engine Information	5
DETAILED INFORMATION	6
Tankage	6
Engines	6
Sail Inventory	6
Electronics	6
Cockpit	7
Deck Equipment	7
Exclusions	8
Disclaimer	8
PHOTOS	9
Port side	9
View from bow	9
On travel lift with fresh bottom	9
Radio	10
Helm	10
Standing rigging	10
Companionway	10
Chart table	11
Engine	11
Cabin	11

---

Galley	11
Spinnaker	12
Table	12
V berth	12
Emergency Tiller	12
Captain having fun	13
<b>CONTACTS</b>	<b>14</b>
Contact details	14
Telephones	14
Office hours	14
Address	14

---

# SPECIFICATIONS

---

## Overview

---

This boat is in great condition and has been very well maintained. She has spent most of her life in fresh water until more recently when she was used to travel between the Chesapeake Bay (brackish) and the Finger Lakes (fresh).

Hauled out for maintenance in September, she has new bottom paint and is ready to set sail.

## Basic Information

---

**Category:** Cruising Sailboat

**Model Year:** 1978

**Year Built:** 1978

**Country:** United States

## Dimensions

---

**LOA:** 30' 0" (9.14m)

**Beam:** 10' 3" (3.12m)

**Min Draft:** 4' 10" (1.47m)

## Speed, Capacities and Weight

---

**Displacement:** 10000 Pounds

**Water Capacity:** 40 Gallons

**Holding Tank:** 30 Gallons

**Fuel Capacity:** 15 Gallons

## Hull and Deck Information

---

**Hull Material:** Fiberglass

**Hull Configuration:** Fin & Skeg

---

## Engine Information

---

**Engines:** 1

**Manufacturer:** Yanmar

**Engine Type:** Inboard

**Fuel Type:** Diesel

---

## DETAILED INFORMATION

---

### Tankage

---

30 gal head waste bladder

- 40 gal fresh water tank[under V-berth]
- 15 gallon fuel tank

### Engines

---

12 hp Yanmar diesel engine and manual

- maintenance and repair book for Yanmar
- 2, 5 gal diesel cans

### Sail Inventory

---

80% storm jib (new)

- 110% working jib
- 140% genoa
- 160% genoa
- 170% genoa
- spinnaker, full triradial,
- spinnaker gear, pole [\$1171.60], fitting on mast quick coupler [\$472.68]
- spinnaker sock
- 2 battened main sails, with double reef points
- roller furler [\$1000], addn. 150% jib on roller furler, Superfurl
- mainsheet traveller, all halyards led aft
- jib sheet tracks [racing gear]
- 6 snatch blocks [\$200 each]
- 2 sail covers
- 3 wind scoops
- lazy jacks

### Electronics

---

new VHF radio with GPS and AIS

- FM, tape radio
- depth sounder
- knotmeter
- auto helm 3000

- battery charger
- manual and electric bilge pump
- electric sump pump
- 110 volt dockside shorepower, 3 cords, 2 adapters

---

## Cockpit

---

Pedestal steering, wheel lock

- lighted Richie C5 compass [\$589.99]
- Full bimini , 2 years old
- full cockpit enclosure, with sun shades
- helmsman bimini
- emergency tiller and adapter to go over wheel
- 5 large fenders, docklines
- cockpit table
- cockpit cushions
- double set of teak hatch closure boards [\$1000]
- 2 wood/plexiglass boards, 2 screen boards
- slip in screen/board hatch closure
- \*\*Garhauer solid vang\*\*

---

## Deck Equipment

---

adjustable back stay

- rope clutch to hold halyards
- 2 boat hooks
- swim ladder
- whisker pole

Lewmar winches:

- 2 # 40, 2 speed
- 2 #25, 2 speed
- 2 #8
- 3 handles

- 25# CQR anchor [\$500]
- 15# Fortress anchor [\$334]
- 400 feet anchor rode,
- 30 feet chain

- Lightning deflector
- RADARflag
- RADAR reflecter ball
- Garhauer solid vang [\$250]
- water hose on roller
- throwable life ring with floating line
- 2 dorad tubes and solar fans
- bo'sun chair [\$162]
- winter tarp covers, framing

## Exclusions

---

Owner's personal belongings.

## Disclaimer

---

The Company offers the details of this vessel or yacht in good faith but cannot guarantee or warrant the accuracy of this information nor warrant the condition of the vessel. A buyer should instruct his representatives, agents, or his surveyors, to investigate such details as the buyer desires validated. This vessel or yacht is offered subject to prior sale, price change, or withdrawal without notice.



# PHOTOS

**Port side**



**View from bow**

**On travel lift with fresh bottom**



**Radio**



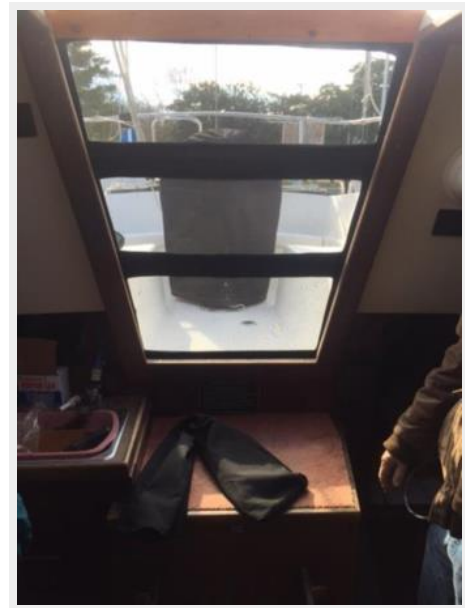
**Helm**



**Standing rigging**



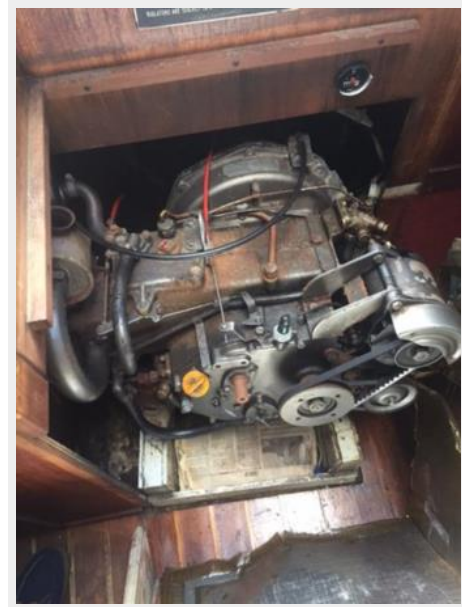
**Companionway**



**Chart table**



**Engine**



**Cabin**



**Galley**



**Table**



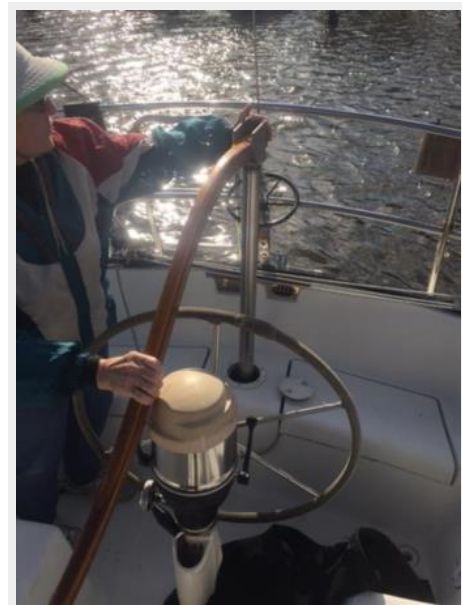
**Spinnaker**



**V berth**



**Emergency Tiller**



## Captain having fun



# CONTACTS

---

Andrey Shestakov, leading yacht broker of the sales department of Shestakov Yacht Sales Inc. Shestakov Yacht Sales Inc., the official representative of the Miami/Fort Lauderdale FL headquarters.

## Contact details

---

Email: [andrey@shestakovyachtsales.com](mailto:andrey@shestakovyachtsales.com)

Web: [shestakovyachtsales.com/en/](http://shestakovyachtsales.com/en/)

## Telephones

---

USA: +1(954)274-4435

## Office hours

---

Monday – Saturday: **9:00 - 21:00** EDT

Sunday: **closed**

## Address

---



Harbour Towne Marina, 850 NE 3rd St,  
STE 213, Dania, FL 33004