

BROADSWORD — DICKEY BOATS



Builder: DICKEY BOATS

Year Built: 2015

Model: Cruising Yacht

Price: **PRICE ON APPLICATION**

LOA: 58' (17.68mm)

Beam: 13.08

Max Draft: 3' (0.91mm)

Cruise Speed: 6 Knots Kts. (7 MPH)

Max Speed: 10 Knots Kts. (12 MPH)

Our experienced yacht broker, Andrey Shestakov, will help you choose and buy a yacht that best suits your needs **BROADSWORD — DICKEY BOATS** from **our catalogue**. Presently, at **Shestakov Yacht Sales Inc.**, we have a wide variety of yachts available on **our sale's list**. We also work in close contact with all the big **yacht manufacturers** from all over the world.

If you would like to buy a yacht **BROADSWORD — DICKEY BOATS** or would like help answering any questions concerning purchasing, selling or chartering a yacht, please call **+1(954)274-4435**

TABLE OF CONTENTS

TABLE OF CONTENTS	2
SPECIFICATIONS	4
Overview	4
Basic Information	4
Dimensions	4
Speed, Capacities and Weight	5
Accommodations	5
Hull and Deck Information	5
Engine Information	5
PHOTOS	6
Pulpit	6
Get Home Rig	6
Solar Array	6
Helm	6
Helm Layout	7
Galley	7
Galley Stove	7
Storage Drawer	7
Dinette	7
Forward View	7
Master Stateroom	8
Head	8
Salon Desk	8
Salon Settee/Double	8
Salon View Forward	9
Salon Companionway	9
Engine Room Companionway	9
Engine	9

Filtration System	10
Aft Deck	10
Aft Deck	10
Swim Platform/Stern	10
Aft Deck	10
Night	10
CONTACTS	11
Contact details	11
Telephones	11
Office hours	11
Address	11

SPECIFICATIONS

Overview

BROADSWORD has a strikingly rugged yet sleek appearance. Solidly built for the avid adventurer of aluminum it is a true world explorer. This is a Dennis Harjamaa design built by Dickey Boats in New Zealand as a very efficient, self-contained, world voyager with everything you need and nothing that you don't. At the top of the list of desirable attributes is rugged simplicity, efficiency, safety and affordability. A vessel with a beautifully arranged engine room in which an owner can do all maintenance oneself.

This fuel efficient design works well not only as a permanent live-aboard, but also is equally at home coastal cruising, crossing oceans or motoring along a canal in France.

The incredible range of between 5 and 6000 nm at cruise speed is achieved with a controllable pitch propeller. There is a manually operated hydraulic pump at the helm for adjusting the pitch. An exhaust gas temperature gauge allows the engine to be loaded up to optimum operating temperature regardless of conditions thus extracting the maximum mileage from every gallon of fuel. Match that with self-righting ability and you begin to see that this long range cruiser is truly designed to go the distance. The interior living spaces are a blend of modern and utilitarian. Again, everything you need and nothing that you don't, in a very clean and uncluttered arrangement. The enclosed deck house offers 360 degree sight lines for navigation and harbors the helm, galley and dining area in a very open and bright space. Just aft of the deck house is the expansive cockpit that will easily accommodate the planned activities. BROADSWORD is definitely the long range cruiser to consider if you require an efficient, rugged yet simple world explorer to get you where you want to go safely and efficiently.

Basic Information

Category: Cruising Yacht

Sub Category: Long Range Cruiser

Model Year: 2015

Year Built: 2015

Dimensions

LOA: 58' (17.68mm)

LWL: 57' (17.37mm)

Beam: 13.08

Max Draft: 3' (0.91mm)

Speed, Capacities and Weight

Cruise Speed: 6 Knots Kts. (7 MPH)

Max Speed: 10 Knots Kts. (12 MPH)

Gross Tonnage: 16 Pounds

Water Capacity: 277 Gallons

Holding Tank: 66 Gal Gallons

Fuel Capacity: 1150 Gal Gallons

Accommodations

Total Cabins: 1

Total Berths: 3

Sleeps: 5

Total Heads: 1

Hull and Deck Information

Hull Material: Aluminum

Deck Material: Aluminum

Exterior Designer: Dennis Harjamaa

Engine Information

Engines: 1

Manufacturer: Beta

Engine Type: Inboard

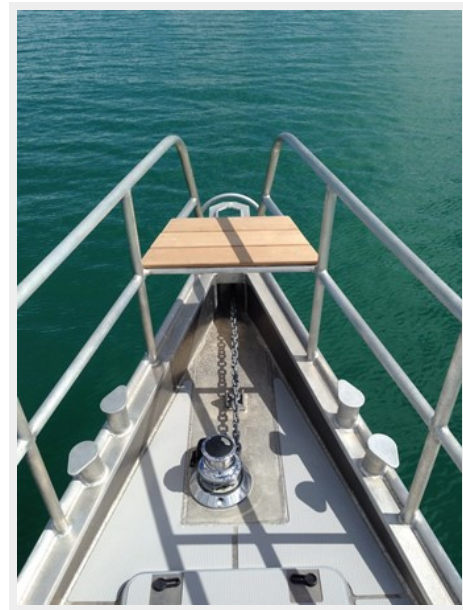
Fuel Type: Diesel

PHOTOS

Get Home Rig



Pulpit



Solar Array



Helm



Helm Layout



Galley



Galley Stove



Storage Drawer



Dinette



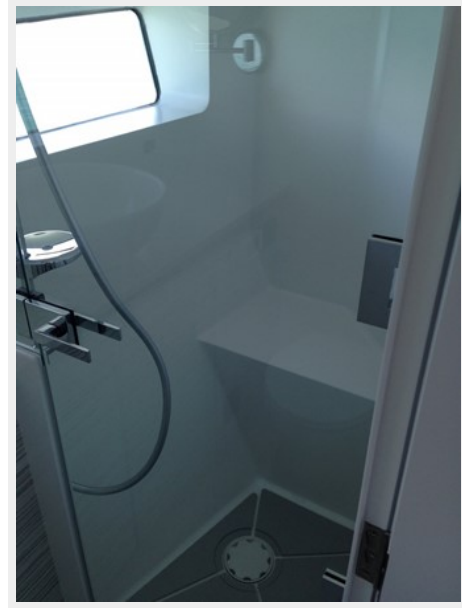
Forward View



Master Stateroom



Head



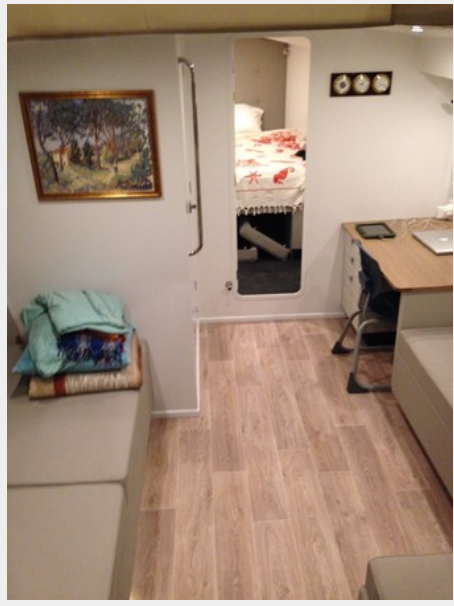
Salon Desk



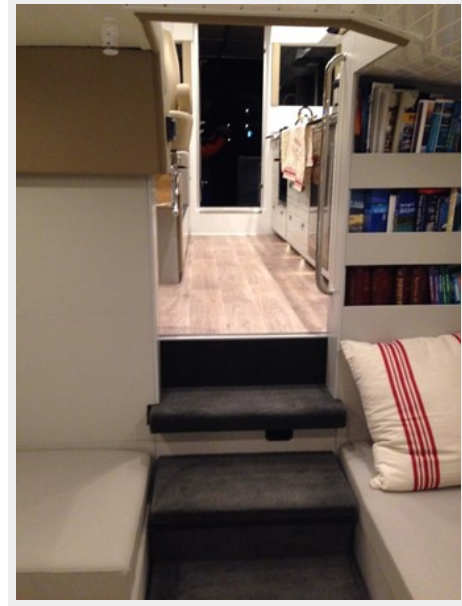
Salon Settee/Double



Salon View Forward



Salon Companionway



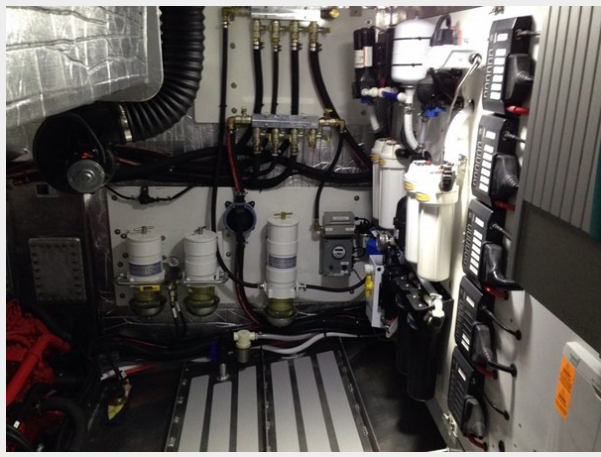
Engine Room Companionway



Engine



Filtration System



Aft Deck



Aft Deck



Swim Platform/Stern



Aft Deck



Night



CONTACTS

Andrey Shestakov, leading yacht broker of the sales department of Shestakov Yacht Sales Inc. Shestakov Yacht Sales Inc., the official representative of the Miami/Fort Lauderdale FL headquarters.

Contact details

Email: **andrey@shestakovyachtsales.com**

Web: shestakovyachtsales.com/en/

Telephones

USA: **+1(954)274-4435**

Office hours

Monday – Saturday: **9:00 - 21:00** EDT

Sunday: **closed**

Address



Harbour Towne Marina, 850 NE 3rd St, STE 213, Dania, FL 33004