

SATISFACTION — CRUISERS YACHTS



Судостроитель: [Cruisers Yachts](#)

Год постройки: 2009

Модель: Крейсер

Цена: **ЦЕНА ЯХТЫ ПО ЗАПРОСУ**

Местонахождение: United States

Длина общая: 52' 0" (15.85m)

Ширина: 15' 6" (4.72m)

Макс. осадка: 3' 8" (1.12m)

Купить **SATISFACTION** — Cruisers Yachts а также выбрать подходящую вам яхту из нашего каталога яхт вам поможет опытный яхтенный брокер Андрей Шестаков. На сегодняшний день компания Shestakov Yacht Sales Inc. имеет большое количество яхт в собственном списке продаж, а также тесно сотрудничает со всеми крупными яхтенными производителями по всему миру.

Для того чтобы купить яхту **SATISFACTION** — Cruisers Yachts а также проконсультироваться по любому вопросу связанному с покупкой, продажей, чартером яхт позвоните по телефону **+7(918)465-66-44**.

ОГЛАВЛЕНИЕ

ОГЛАВЛЕНИЕ	2
ХАРАКТЕРИСТИКИ	5
Обзор	5
Основная информация	6
Размеры	6
Скорость, вместимость и масса	6
Размещение	6
Корпус и палуба	6
Информация о двигателе	7
ПОДРОБНОЕ ОПИСАНИЕ	8
SALON	8
GALLEY	8
VIP STATEROOM FORWARD	8
MASTER STATEROOM AFT	9
HEADS MASTER AND VIP	9
СОСКРІТ	10
NAVIGATION AND ELECTRONICS	10
HULL AND DECK	11
MECHANICAL	11
Исключения	12
Отказ от ответственности	12
ФОТОГРАФИИ	13
Bow	13
Port Side	13
Cabin Entry Door	13
Cabin Entry	13
Salon Cabin	13
Cabin Entry Steps	13

Salon Sectional	14
Cruisers Control Panel	14
Power Distribution Panel	14
Galley	14
VIP Stateroom Forward	14
Bed Storage Drawers	14
VIP Entertainment Center	15
Day Head	15
Master Stateroom Entrance	15
Master Stateroom	15
Master Stateroom Carpeted	15
Master Stateroom Cabinets	15
Master Port Side View	16
Master Portside Settee	16
Master Entertainment Center	16
Master Ensuite Head	16
Helm	16
Helm Side View	16
Helm Chairs	17
Helm Guest Seating	17
Transom View	17
Power Sunroof	17
Upper Cockpit Level	17
Lower Cockpit Area	17
Wet Bar	18
Grill	18
Cockpit Area	18
Sun Covers	18
Fore Deck	18

Wide Side Decks	18
Radar	19
Triple Engines	19
Engine Room Aft View	19
POD Drive	19
Engine Room Fwd View	19
Engine Room Side View	19
Filters	20
Power Breaker Panel Engine Room	20
Stern	20
Floorplan	20
КОНТАКТЫ	21
Контактная информация	21
Телефоны	21
Время работы	21
Адрес	21

ХАРАКТЕРИСТИКИ

Обзор

KEY FEATURES

- Current original owner purchased this boat new in 2011
- Volvo D6 Triple 600 IPS, Preferred 435 HP, low hours
- Steering, Fly-by-Wire & Joystick Technology (IPS)
- Kohler Generator 15.5 KW with sound shield
- Hardtop fiberglass integrated w/ power sunroof
- Raymarine radar and Intellian Sat TV
- Walk-thru foredeck access with handrail
- Cockpit upgraded air conditioning
- Hydraulic swim platform, w/ synthetic teak
- Reverso oil change system
- Underwater lighting at transom

OVERVIEW

Current original owner purchased this boat new in 2011. Built on a modified V-hull and solid fiberglass bottom, this twin- stateroom, two head floor plan offers the luxurious comforts of a small motor yacht. Owner has maintained this boat to the highest standards.

An opaque sliding door next to the helm area, allows entry into the spacious and nicely appointed salon. The 12' Ultra-leather sectional seats 8 for cocktails and dinner. The salon also features a Panasonic Home Theater surround sound system, flat panel TV, air conditioning, heating system and a day head. The galley is port side, large, open and fully equipped. Galley includes a glass-encased built in liquor cabinet.

The forward VIP stateroom has a center-line queen island bed with private access to the day head. The full beam luxurious master stateroom located aft, features a queen island bed, plenty of storage, an entertainment center with surround sound system and an ensuite head with a separate stall shower.

The fully air conditioned cockpit has a split level design. This upper operational level has twin helm chairs (Captain and Companion), guest lounge seating and a walk-thru windshield with a handrail for easy access to the fore deck. It is open, airy and has full 360 degree visibility.

The lower level cockpit is designed for entertaining and relaxing with family and friends. Some of the appointments include a surround sound system, plenty of seating, a large cherry wood cocktail table, wet bar, refrigerator, ice maker and BBQ. There is dockside entry steps both port and starboard. Two transom gates allow access to the extended hydraulic swim platform.

Other items worth mentioning are the hardtop, fiberglass integrated w/power sunroof and a

transom "rumble seat". The steering system has the Fly-by-Wire & Joystick Technology (IPS) making it extremely easy to dock. The engine room has triple Volvo low hour engines with POD drives. The engine room is large and allows easy access around all three engines.

DYSID:3047219

Основная информация

Тип судна: Крейсер

Подкатегория: Express

Модельный год: 2009

Год постройки: 2009

Страна: United States

Размеры

Длина общая: 52' 0" (15.85m)

Ширина: 15' 6" (4.72m)

Макс. осадка: 3' 8" (1.12m)

Трапы: 13' 1" (3.99m)

Длина привального бруса: 52' 3"
(15.93m)

Скорость, вместимость и масса

Вместимость воды: 150 Gallons

Вместимость сточного бака: 75 Gallons

Объем топливного бака: 500 Gallons

Размещение

Всего коек: 2

Всего ком. состава: 2

Корпус и палуба

Материал корпуса: Fiberglass

Информация о двигателе

Двигатели: 3

Производитель: Volvo

Модель: D6 600 IPS

Тип двигателя: Inboard

Тип топлива: Diesel

ПОДРОБНОЕ ОПИСАНИЕ

SALON

- Sliding entry door, cherry entry steps
- Teak and Holley flooring
- Crescent shaped leather settee/ sleeper
- Two dinette tables, cherry wood
- Electrical power distribution panel
- Cruisers Yachts Control Panel, lights, house battery, bilge
- FireBoy Xintex Carbon Monoxide Detector
- Dolby Digital Theatre Sole 20" LCD flat screen TV
- Panasonic 5 Disc Changer SA-PT660
- Satellite ready, digital surround sound w/speakers
- Vertical windows (6) w/ cherry wooden blinds
- Cherry Veneer Interior Package, w/ curved panel overheads
- Central vacuum throughout
- Power Receptacles, 110vac

GALLEY

- Located in salon, port side
- Mytera solid surface countertops
- EuroKera Gourmet 2 burner electric cooktop
- Sharp Carousel convection microwave oven
- Double SS sink w/ single lever spray faucet
- NOVA KOOL refrigerator/ freezer under counter
- Teak and Holley flooring
- Windows 6 vertical - galley, dinette
- Cherry wood blinds

VIP STATEROOM FORWARD

- Queen size island berth w/ drawers
- Therapeutic foam mattress
- Padded headboard
- Duvets and pillow shams
- Reading lights, mirrors
- Outbound storage cabinets
- Cedar lined hanging closet
- Ceiling hatch w/ sunshade

- Padded ceiling
- Overhead lighting
- Windows, 4 round
- Sole flat screen TV
- Blackmore CD/DVD player
- A/C thermostat control
- FireBoy CO detector
- Receptacle, 110 VAC
- Carpeted with floor cover
- Ensuite and guest head

MASTER STATEROOM AFT

- Queen Island berth w/ padded headboard
- Therapeutic foam mattress
- Duvets and pillow shams
- Reading lights, mirrors
- Night stands with storage
- Outbound storage cabinets
- Cedar lined hanging closet
- Padded ceiling and walls
- Vertical windows port and stbd (6)
- Custom wooden blinds
- Portside settee with reading light
- Cabinet w/ Splendide 2000S washer/ dryer combo
- Cruise Air with thermostat control
- RayMarine Smart Pilot in cabinet
- Sole flat screen TV, Satellite ready
- Blackmore BAP-347 CD/DVD/MP3 player
- Sony Marine stereo CDX-M50IP
- CO Detector Monitor
- Carpeted with snap carpet covers
- Speakers
- Ensuite head

HEADS MASTER AND VIP

- Heads, private (2), VIP w/ second entrance
- Floor tile, fwd and aft stateroom
- Dometic Head centrifuge, 2 electric w/ holding tanks
- Vanity's w/sinks, Mystera solid surface tops
- Stand up separate shower stalls, both

- Mirrored medicine cabinets
- Storage cabinets below
- Ground fault receptacles

COCKPIT

- RAISED COCKPIT AREA
- Fiberglass hardtop integrated w/ Power Sunroof
- Walk-Thru foredeck access w/ handrail
- Windshield wiper (1) w/ defroster
- Windshield washer system
- Custom flip-up helm seats (2), electric
- Companion lounge seating (helm)
- Cockpit w/ upgraded air conditioning
- Sony MP3 Sat Ready Marine CDXH91OUI stereo
- Helm station and navigation electronics
- Overhead lighting
- IPod docking station
- Receptacle 12 vac
- LOWER COCKPIT AREA
- Air conditioned, climate controlled
- Aft cockpit seat- L shaped
- Aft cockpit seat- rotating
- Cockpit carpeting
- Boarding gates- transom (2)
- Hot and cold shower
- Fiberglass cockpit, self draining
- Wet Bar, hot/cold faucet w/sink
- Vitrifrigo Ice maker and refrigerator
- Cherry wood table, hi- lo
- Deck hatch engine room access
- Full canvas enclosure covers
- Electric grill
- Drink holders

NAVIGATION AND ELECTRONICS

- Fly-by-Wire Joystick steering system technology (IPS)
- Plastimo Compass
- Raymarine AP Autohelm
- Raymarine E120 MFD
- Raymarine VHF radio

- Raymarine radar open array antenna
- Garmin GPS MAP 7212 MFD
- Tilt steering wheel
- INTELLIAN Sat TV dome antenna
- Volvo Penta control- data screen
- Electronic Vessel Controls (EVC)
- Volvo Penta gauges
- GOLIGHT spotlight w/ control
- Sony stereo control
- Single lever engine controls
- Ignition key switches (3)
- High water alarm
- Bennett trim tabs
- FireBoy engine shut down system
- Navigation lights
- Air horn, electric

HULL AND DECK

- Maxwell Windlass fore deck w/ foot switch
- Bow anchor rope locker
- Anchor roller (polished) mooring bit & cleat
- Anchor locker, anchor & 180' of 3/8" chain
- Hydraulic swim platform, synthetic teak
- Dockside water and fuel inlet
- Hardware deck cleats
- Welded SS bow rails
- Bow hatch w/ screen
- Retractable power sunroof
- Sat TV antenna dome
- Radar antenna, open array
- Under water lights
- Transom "Rumble Seat" system
- Transom storage lockers

MECHANICAL

- Reverse cycle air conditioning (32000 BTU)
- Fire extinguisher automatic (w/engine shutdown)
- Kohler Generator 15.5 KW, 220V w/ sound shield
- Generator, Remote start/stop digital display
- Battery charging system, battery isolator

- Bilge pumps w/ high water alarms
- Bronze Seacocks and thru hulls
- Carbon monoxide detectors
- Climate controlled cockpit
- Lights bilge, cabin cockpit courtesy
- Shore power cord, retractable w/ remote
- Steering system Fly-by-Wire & Joystick
- Power assisted hydraulic steering
- Trim tabs Electro Hydraulic w/ zincs on flaps
- Bilge blowers
- Bonding Shaft logs, dripless
- Nibral propellers
- Bronze rudders

Исключения

При продаже яхты исключаются личные вещи владельца.

Отказ от ответственности

Компания предоставляет описание судна или яхты добросовестно, но не может гарантировать точность этой информации, а также не ручается за техническое состояние. Покупатель должен проинструктировать своих агентов или оценщиков исследовать представленную информацию более подробно, по собственному желанию. Продажа судна или яхты, изменение цены или снятие с продажи будет происходить без предварительного уведомления.

ФОТОГРАФИИ

Bow



Port Side



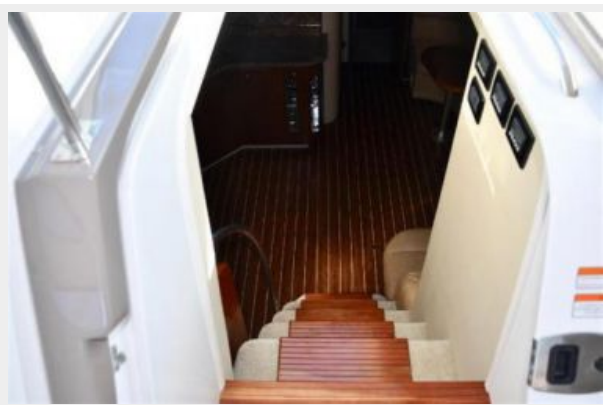
Cabin Entry Door



Cabin Entry



Cabin Entry Steps



Salon Cabin



Salon Sectional



Cruisers Control Panel



Power Distribution Panel



Galley



VIP Stateroom Forward



Bed Storage Drawers



VIP Entertainment Center



Day Head



Master Stateroom Entrance



Master Stateroom



Master Stateroom Carpeted



Master Stateroom Cabinets



Master Port Side View



Master Portside Settee



Master Entertainment Center



Master Ensuite Head



Helm



Helm Side View



Helm Chairs



Helm Guest Seating



Transom View



Power Sunroof



Upper Cockpit Level



Lower Cockpit Area



Wet Bar



Grill



Cockpit Area



Sun Covers



Fore Deck



Wide Side Decks



Radar



Triple Engines



Engine Room Aft View



POD Drive



Engine Room Fwd View



Engine Room Side View



Filters



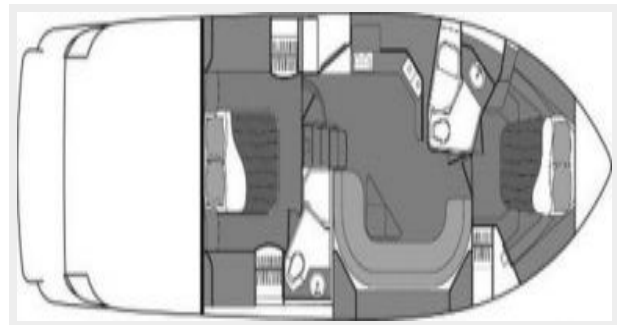
Power Breaker Panel Engine Room



Stern



Floorplan



КОНТАКТЫ

Андрей Шестаков (Andrey Shestakov) – ведущий яхтенный брокер отдела продаж яхт и судов компании Shestakov Yacht Sales Inc. Официальный представитель Shestakov Yacht Sales Inc. для русскоговорящих клиентов в центральном офисе компании в Майами/Форт Лодердейл/Флорида/США.

Контактная информация

Email: andrey@shestakovyachtsales.com

Web: shestakovyachtsales.com

Телефоны

Краснодарский край: **+7(918)465-66-44**

США, Майами, Флорида: **+1(954)274-4435**

Время работы

Понедельник – Суббота: **9:00 - 21:00**
EDT

Воскресенье: **Закрито**

Адрес



Harbour Towne Marina, 850 NE 3rd St,
STE 213, Dania, FL 33004