

MAGIC TWELVE — VISMARA MARINE SERVICE



Builder: Vismara Marine Service

LOA: 46' 0" (14.00m)

Year Built: 2007

Model: Cruising Sailboat

Price: PRICE ON APPLICATION

Location: France

Our experienced yacht broker, Andrey Shestakov, will help you choose and buy a yacht that best suits your needs **MAGIC TWELVE — Vismara Marine Service** from our catalogue. Presently, at Shestakov Yacht Sales Inc., we have a wide variety of yachts available on our sale's list. We also work in close contact with all the big yacht manufacturers from all over the world.

If you would like to buy a yacht **MAGIC TWELVE — Vismara Marine Service** or would like help answering any questions concerning purchasing, selling or chartering a yacht, please call **+1(954)274-4435**

TABLE OF CONTENTS

TABLE OF CONTENTS	2
SPECIFICATIONS	3
Overview	3
Basic Information	7
Dimensions	7
Accommodations	8
Hull and Deck Information	8
Engine Information	8
PHOTOS	9
CONTACTS	11
Contact details	11
Telephones	11
Office hours	11
Address	11

SPECIFICATIONS

Overview

MAGIC TWELVE is pure cruiser racer. She has won many races and yet she remains a very good cruising sailing yacht. Most of her cruising accommodation is dismantled in Racing mode.

Prize List :

- June 2014 - Giraglia Rolex Race : 3rd overall
- May 2014 - Semaine de Porquerolles : Winner
- April/2014 - SNIM (Semaine Nautique International Mediterranean) : 3rd IRC 2
- March 2014 - Massilia Cup : Winner IRC 2
- June 2013 - Giraglia Rolex Cup Inshore Races : 3rd IRC B
- April 2012 - SNIM (Semaine Nautique International Mediterranean) : 2nd IRC 1
- June 2009 - Giraglia Rolex Cup Inshore Races : 3rd IRC B
- October 2008 - Rolex Middle Sea Race : Winner IRC 2
- March 2008 - Semaine de porquerolles : Winner IRC 1
- October 2007 - Rolex Middle Sea Race : 3rd IRC 2

IRC Certificate : 1.192

Construction :

***hull :** Composite

***superstructure :** Composite

***deck :** Composite

Colour *hull : Black

***superstructure :** White

***deck** : White

Cabins : 3 double bed cabins

Length overall : 14.00 m

Maximum beam : 4.10 m

Draft : 2.80 m

Displacement : 9.10 t

Keel : 4.80 t (bulb approx. 3.3 t)

Spars : Carbon NORDIC mast with 2 spreaders

Carbon boom

Standing rigging : NAVTEC nitronic rod rigging – new from 2013

Running rigging : Spectra

Furlers : HARKEN tuff luff foil

Sails : one complete set of racing sails plus numerous spares

Sail area *upwind : m²

***downwind**: m²

Deck hardware : LEWMAR winches + pedestal for the primary winches

Windlass : Yes

Engine : 40 HP VOLVO

***Performances** : 8.5 knots @ cruising speed

***Consumption** : 5 L/H @ cruising speed

***Range** : 170 NM Approx.

Batteries New 2006 (service and engine batteries)

Fuel : 100 L

Water : 2 x 300 L

Boiler : Yes

Refrigerator : Yes

Electronic *instruments : B&G Hydra 2000 + 4 large displays on the mast

***sounder** : B&G

***self steering** : B&G

***AIS** : Yes

***VHF radio** : SIMRAD RD 68

***GPS** : GEONAV 6 Sunshine

***chart plotter** : GEONAV 6 Sunshine

***Epirb** : GME

***stereo** : FUSION MS-RA 200

DECK AND COCKPIT

Large cockpit with 2 steering wheels and pedestal.

A clever cockpit table is installed in cruising mode.

ACCOMMODATION

Most of the accommodation can be dismantled for racing mode

CHART TABLE

On starboard aft of the saloon

SALOON

Large dining table for up to 6/8 guests

CABINS

3 double bed cabins

SHOWER ROOM/HEAD

1

GALLEY

Stainless steel double sink

CMO 2 burners stove

SAILS AND RIGGING

1 complete set of racing sails plus numerous spares

Carbon mast and boom

ELECTRICITY

12 & 220 V circuits

Shore power

SAFETY AND SECURITY

Complete set

PLUMBING AND TANKS

Fresh water pressure pump

Boiler

MOORING

1 windlass

1 main anchor + chain

1 spare anchor

TENDERS AND TOYS

2.30 m BOMBARD rib + 9.9 HP MARINER outboard engine

VAT STATUS

Paid

Basic Information

Category: Cruising Sailboat

Sub Category: Racing Sailboat

Model Year: 2007

Year Built: 2007

Country: France

Dimensions

LOA: 46' 0" (14.00m)

Accommodations

Total Cabins: 3

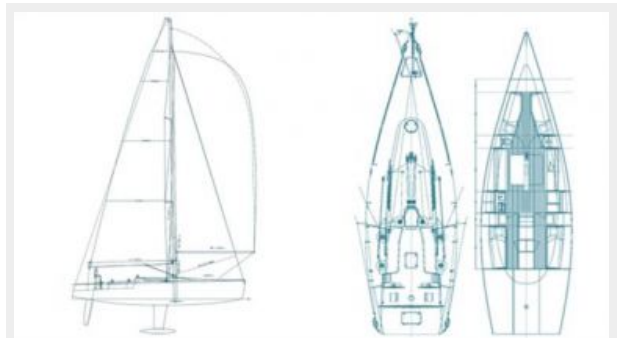
Hull and Deck Information

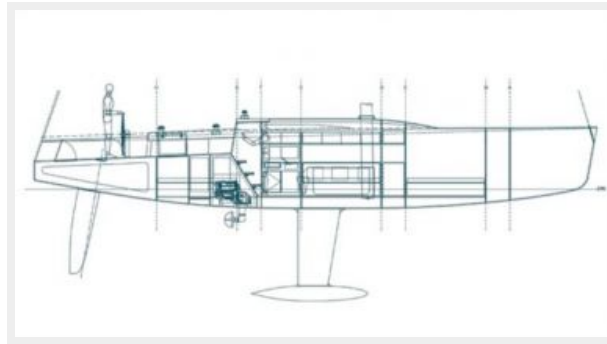
Hull Material: Composite

Engine Information

Manufacturer: Volvo

PHOTOS





CONTACTS

Andrey Shestakov, leading yacht broker of the sales department of Shestakov Yacht Sales Inc. Shestakov Yacht Sales Inc., the official representative of the Miami/Fort Lauderdale FL headquarters.

Contact details

Email: andrey@shestakovyachtsales.com

Web: shestakovyachtsales.com/en/

Telephones

USA: +1(954)274-4435

Office hours

Monday – Saturday: **9:00 - 21:00** EDT

Sunday: **closed**

Address



Harbour Towne Marina, 850 NE 3rd St,
STE 213, Dania, FL 33004