

## MAKAI — FONTAINE PAJOT



**Builder:** FONTAINE PAJOT

**Year Built:** 1994

**Model:** Catamaran

**Price:** PRICE ON APPLICATION

**Location:** United States

**LOA:** 35' 0" (10.67m)

**Beam:** 19' 2" (5.84m)

**Max Draft:** 3' 1" (0.94m)

Our experienced yacht broker, Andrey Shestakov, will help you choose and buy a yacht that best suits your needs **Makai — FONTAINE PAJOT** from our catalogue. Presently, at Shestakov Yacht Sales Inc., we have a wide variety of yachts available on our sale's list. We also work in close contact with all the big yacht manufacturers from all over the world.

If you would like to buy a yacht **Makai — FONTAINE PAJOT** or would like help answering any questions concerning purchasing, selling or chartering a yacht, please call **+1(954)274-4435**

---

# TABLE OF CONTENTS

---

TABLE OF CONTENTS	2
SPECIFICATIONS	3
Overview	3
Basic Information	6
Dimensions	6
Speed, Capacities and Weight	6
Accommodations	6
Hull and Deck Information	6
Engine Information	7
DETAILED INFORMATION	8
Description	8
Exclusions	11
Disclaimer	11
PHOTOS	12
CONTACTS	21
Contact details	21
Telephones	21
Office hours	21
Address	21

# SPECIFICATIONS

---

## Overview

---

RECENT PRICE REDUCTION. "Makai" is well equipped for extended self sufficient cruising. This is a owner version layout with 3 cabins and one head. She has a desirable hardtop bimini that has a rain catchment system and also has 6 solar panels which provide all the power you need at anchor.

There is excellent visibility from the helm seat and comprehensive electronic package including Garmin 4210 Chartplotter/GPS, Radar and Autopilot and AIS receiver. New LED tri-color masthead anchor and navigation light. Wide walk around decks and aft deck platform between the steps. Twin Yanmar diesel engines. Electric windlass with good anchor gear, new lectrasan head, new propane system, RIB and outboard, 50' mast height and 3' draft. Bring your gear and go!

- Owner version with large berth forward in the port hull
- Additional hull access forward with opening hatch
- Large head and shower in port aft with door to port engine, batteries and equipment
- Escape hatches in each hull
- Starboard hull has two cabins, fore and aft
- Extra thick cushions in berths
- Starboard engine access under aft berth, Port engine door in head compartment
- Central salon has a wrap around settee with a triangular dining table
- Striking black upholstery
- Nav desk on port corner of settee
- Panoramic wrap around windows with two opening ports forward for great ventilation
- 2 removable interior privacy shades
- Opening hatches w/ canvas covers
- Climma 4,800 btu air conditioning unit for use at dock
- Galley is to the starboard portion of the salon
- Flatscreen TV mounted on bulkhead, can view nav screen on TV
- LED interior lights
- (3) Complete sets of bed linens, comforters, assorted towels
- GALLEY
- The galley up is located in the starboard salon with great wrap around working space and a great ocean view!
- Eno 3 burner propane stove cooktop
- NEW Propane system in lazette including new box, new tank and solinoid
- Isotherm front loading refrigerator
- Engel portable 12V refrigerator/freezer
- SS sink
- Pressure water system

- Cabinets and storage
- Complete with all pans, dishes, drinkware, utensils, etc.
- Magma Kettle BBQ propane grill
- SAILS AND RIGGING
- Z Spar Aluminum mast and boom
- Mast height 50'
- Swept back spreader
- Most running rigging is new
- Sail inventory: Mainsail w/lazy jacks Roller furling headsail Storm Sail Blooper
- (2) #40 Lewmar ST Primary winches on coach roof
- (2) #40 Lewmar ST winches on mast
- Line clutches
- Traveller on hardtop roof with adjustable line clutch on SS pole aft
- ELECTRONICS/NAVIGATION
- Garmin 4210 Chartplotter/GPS & depth
- Garmin Radar Raymarine Autopilot with remote
- AIS receiver
- Raymarine wind indicator
- Plastimo compass
- Standard Horizon VHF at nav desk with RAM mic at helm
- Can also view nav screen on LED TV in salon
- Jensen TV and Jensen DVD player
- Kenwood Stereo
- NEW cockpit speakers
- NEW LED Tri-color masthead anchor and navigation lights
- NEW Florida chartbook and cruising guide
- DECK EQUIPMENT
- Goiot 12V Electric windlass with foot controls on deck
- Large anchor locker Danforth anchor w/ chain and rode
- Suncor 35# Stainless Steel folding anchor w/ 30' chain & 100' braided line
- New heavy duty anchor bridle
- Drogue/sea anchor
- Hardtop bimini on SS posts Water catchment hose connections on roof
- Helm seat
- Wrap around cockpit seating with aft cushion cockpit table
- Stern swim steps w/grab rail
- Transom platform
- Transom shower
- 9'3" RIB Zodiac dingy and 2.2hp outboard engine
- 2 coats Sea Hawk bottom paint 5/16
- (7) PFD's Flares and flare gun flashlights
- Life ring
- Lines and fenders, boat hook, deck brush, jerry jugs
- MECHANICAL

- Twin Yanmar diesel engines 2GM20F Port 16hp, 1073 hrs, Stbd 18 hp 573 hours
- Previous owner reports engine rebuilds, hour difference unknown
- Recent engine service, oil change, new mixing elbow, new impellers
- New Saildrives SD20 5/16
- (2) NEW high decibel high water alarms in engine compartments
- 3 bladed props
- Morse controls
- Racor 500 Fg and secondary filter
- Waterlift muffler
- (3) Fire extinguishers
- Jabsco head NEW Lectra scan system and new hoses
- (4) Rule bilge pumps
- NEW CO2/Smoke detectors
- NEW LP Tank w/pressure gauge/solinoid and new vented box in lazarette
- Climma 4,800 btu air conditioning
- Spare clamps, filters, impellers, oil
- ELECTRICAL
- (6) Solar panels mounted on hardtop bimini 420 watts, enough power to run refrigeration and lights on extending anchoring
- Xantrex 1500 Invertor
- (4) wet-acid sealed batteries
- (1 new) Portable battery charger
- AC/DC electric panel
- Shore power cord
- LED interior lights
- MANUFACTURER DESCRIPTION
- Naturally convivial, the Tobago 35 gathers the galley and the navigation table in the saloon. This allows you to enjoy the superb panoramic view while cooking or navigating, protected from the heat by the over-hang located outside on the roof. The hulls, entirely dedicated to the cabins and the head, remain private (owner's cabin with head and shower on port side, two guest cabins on starboard side). Naturally seaworthy, the Tobago 35 is an innovative-looking sailing vessel. Take the helm and appreciate the power. With the autopilot and the raised platform, you can have a drink away from the motion of the waves. Every Fountaine Pajot is built to the highest ISO 9002 European standard for offshore yachts, incorporating vacuum-bagging construction and careful hand lay-up with sophisticated high-strength resins which results in an extremely high strength-to-weight ratio. The keels are fixed and filled with foam, protecting the rudders and shafts. Should they strike a reef or submerged object they harmlessly break away without allowing water intrusion. Fountaine Pajot catamarans use nets forward and eliminate weight in the forward hulls to prevent pitching and aid bow recovery in heavy seas. Flat deck spaces, and especially the relatively flat coach roof, make it comfortable and easy to move around and handle sails. A unique, patented feature is the eyebrow overhang of the coach roof over the window areas. This prevents the high sun from creating a greenhouse effect inside the boat.

- **DISCLAIMER:** The Company offers the details of this vessel in good faith but cannot guarantee or warrant the accuracy of this information nor warrant the condition of the vessel. A buyer should instruct his agents, or his surveyors, to investigate such details as the buyer desires validated. This vessel is offered subject to prior sale, price change, or withdrawal without notice.

---

## Basic Information

---

**Category:** Catamaran

**Sub Category:** Cruising Sailboat

**Model Year:** 1994

**Year Built:** 1994

**Country:** United States

---

## Dimensions

---

**LOA:** 35' 0" (10.67m)

**LWL:** 32' 3" (9.83m)

**Beam:** 19' 2" (5.84m)

**Max Draft:** 3' 1" (0.94m)

---

## Speed, Capacities and Weight

---

**Water Capacity:** 66 Gallons

**Fuel Capacity:** 37 Gallons

---

## Accommodations

---

**Total Cabins:** 3

**Total Berths:** 6

**Total Heads:** 1

---

## Hull and Deck Information

---

**Hull Material:** Fiberglass

---

## Engine Information

---

**Engines:** 2

**Manufacturer:** Yanmar

**Model:** 2GM20F

**Fuel Type:** Diesel

---

# DETAILED INFORMATION

---

## Description

---

"Makai" has just returned from the Bahamas and is well equipped for extended self sufficient cruising. This is a owner version layout with 3 cabins and one head. She has a desirable hardtop bimini that has a rain catchment system and also has 6 solar panels which provide all the power you need at anchor.

There is excellent visability from the helm seat and comprehensive electronic package including Garmin 4210 Chartplotter/GPS, Radar and Autopilot and AIS receiver. New LED tri-color masthead anchor and navigation light. Wide walk around decks and aft deck platform between the steps. Twin Yanmar diesel engines. Electric windlass with good anchor gear, new lectrasan head, new propane system, RIB and outboard, 50' mast height and 3' draft. Bring your gear and go!

- Owner version with large berth forward in the port hull
- Additional hull access forward with opening hatch
- Large head and shower in port aft with door to port engine, batteries and equipment
- Escape hatches in each hull
- Starboard hull has two cabins, fore and aft
- Extra thick cushions in berths
- Starboard engine access under aft berth, Port engine door in head compartment
- Central salon has a wrap around settee with a triangular dining table
- Striking black upholstery
- Nav desk on port corner of settee
- Panoramic wrap around windows with two opening ports forward for great ventillation
- 2 removable interior privacy shades
- Opening hatches w/ canvas covers
- Climma 4,800 btu air conditioning unit for use at dock
- Galley is to the starboard portion of the salon
- Flatscreen TV mounted on bulkhead, can view nav screen on TV
- LED interior lights
- (3) Complete sets of bed linens, comforters, assorted towels
- GALLEY
- The galley up is located in the starboard salon with great wrap around working space and a great ocean view!
- Eno 3 burner propane stove cooktop
- NEW Propane system in lazarette including new box, new tank and solinoid
- Isotherm front loading refrigerator
- Engel portable 12V refrigerator/freezer
- SS sink
- Pressure water system



- Cabinets and storage
- Complete with all pans, dishes, drinkware, utensils, etc.
- Magma Kettle BBQ propane grill
- SAILS AND RIGGING
- Z Spar Aluminum mast and boom
- Mast height 50'
- Swept back spreader
- Most running rigging is new
- Sail inventory: Mainsail w/lazy jacks Roller furling headsail Storm Sail Blooper
- (2) #40 Lewmar ST Primary winches on coach roof
- (2) #40 Lewmar ST winches on mast
- Line clutches
- Traveller on hardtop roof with adjustable line clutch on SS pole aft
- ELECTRONICS/NAVIGATION
- Garmin 4210 Chartplotter/GPS & depth
- Garmin Radar Raymarine Autopilot with remote
- AIS receiver
- Raymarine wind indicator
- Plastimo compass
- Standard Horizon VHF at nav desk with RAM mic at helm
- Can also view nav screen on LED TV in salon
- Jensen TV and Jensen DVD player
- Kenwood Stereo
- NEW cockpit speakers
- NEW LED Tri-color masthead anchor and navigation lights
- NEW Florida chartbook and cruising guide
- DECK EQUIPMENT
- Goiot 12V Electric windlass with foot controls on deck
- Large anchor locker Danforth anchor w/ chain and rode
- Suncor 35# Stainless Steel folding anchor w/ 30' chain & 100' braided line
- New heavy duty anchor bridle
- Drogue/sea anchor
- Hardtop bimini on SS posts Water catchment hose connections on roof
- Helm seat
- Wrap around cockpit seating with aft cushion cockpit table
- Stern swim steps w/grab rail
- Transom platform
- Transom shower
- 9'3" RIB Zodiac dingy and 2.2hp outboard engine
- 2 coats Sea Hawk bottom paint 5/16
- (7) PFD's Flares and flare gun flashlights
- Life ring
- Lines and fenders, boat hook, deck brush, jerry jugs
- MECHANICAL

- Twin Yanmar diesel engines 2GM20F Port 16hp, 1073 hrs, Stbd 18 hp 573 hours
- Previous owner reports engine rebuilds, hour difference unknown
- Recent engine service, oil change, new mixing elbow, new impellers
- New Saildrives SD20 5/16
- (2) NEW high decibel high water alarms in engine compartments
- 3 bladed props
- Morse controls
- Racor 500 Fg and secondary filter
- Waterlift muffler
- (3) Fire extinguishers
- Jabsco head NEW Lectra scan system and new hoses
- (4) Rule bilge pumps
- NEW CO2/Smoke detectors
- NEW LP Tank w/pressure gauge/solinoid and new vented box in lazarette
- Climma 4,800 btu air conditioning
- Spare clamps, filters, impellers, oil
- ELECTRICAL
- (6) Solar panels mounted on hardtop bimini 420 watts, enough power to run refrigeration and lights on extending anchoring
- Xantrex 1500 Invertor
- (4) wet-acid sealed batteries
- (1 new) Portable battery charger
- AC/DC electric panel
- Shore power cord
- LED interior lights
- MANUFACTURER DESCRIPTION
- Naturally convivial, the Tobago 35 gathers the galley and the navigation table in the saloon. This allows you to enjoy the superb panoramic view while cooking or navigating, protected from the heat by the over-hang located outside on the roof. The hulls, entirely dedicated to the cabins and the head, remain private (owner's cabin with head and shower on port side, two guest cabins on starboard side). Naturally seaworthy, the Tobago 35 is an innovative-looking sailing vessel. Take the helm and appreciate the power. With the autopilot and the raised platform, you can have a drink away from the motion of the waves. Every Fountaine Pajot is built to the highest ISO 9002 European standard for offshore yachts, incorporating vacuum-bagging construction and careful hand lay-up with sophisticated high-strength resins which results in an extremely high strength-to-weight ratio. The keels are fixed and filled with foam, protecting the rudders and shafts. Should they strike a reef or submerged object they harmlessly break away without allowing water intrusion. Fountaine Pajot catamarans use nets forward and eliminate weight in the forward hulls to prevent pitching and aid bow recovery in heavy seas. Flat deck spaces, and especially the relatively flat coach roof, make it comfortable and easy to move around and handle sails. A unique, patented feature is the eyebrow overhang of the coach roof over the window areas. This prevents the high sun from creating a greenhouse effect inside the boat.

- **DISCLAIMER:** The Company offers the details of this vessel in good faith but cannot guarantee or warrant the accuracy of this information nor warrant the condition of the vessel. A buyer should instruct his agents, or his surveyors, to investigate such details as the buyer desires validated. This vessel is offered subject to prior sale, price change, or withdrawal without notice.

---

## Exclusions

---

Owner's personal belongings.

---

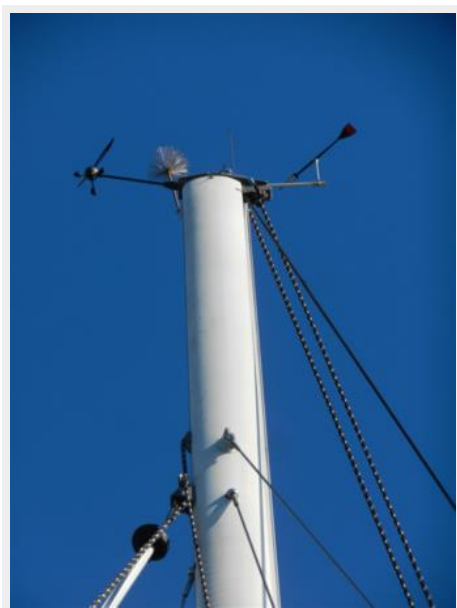
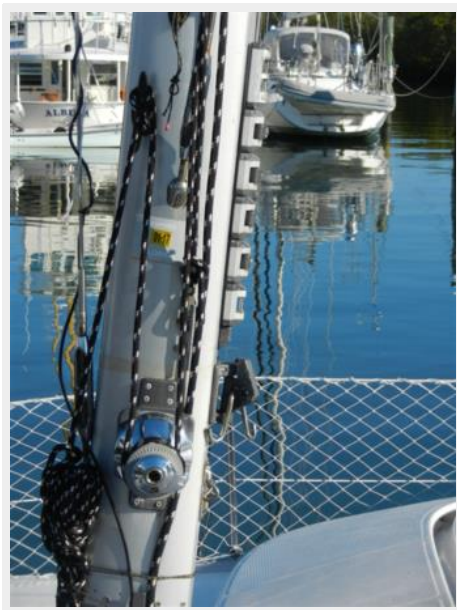
## Disclaimer

---

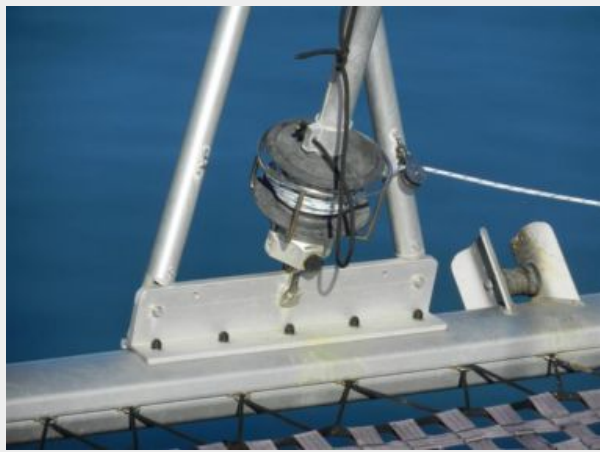
The Company offers the details of this vessel or yacht in good faith but cannot guarantee or warrant the accuracy of this information nor warrant the condition of the vessel. A buyer should instruct his representatives, agents, or his surveyors, to investigate such details as the buyer desires validated. This vessel or yacht is offered subject to prior sale, price change, or withdrawal without notice.

# PHOTOS



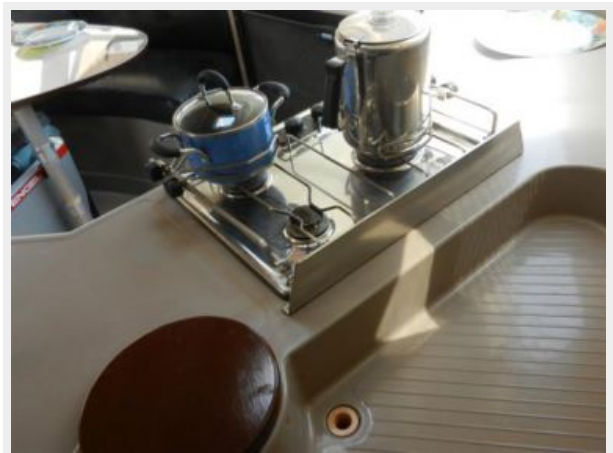








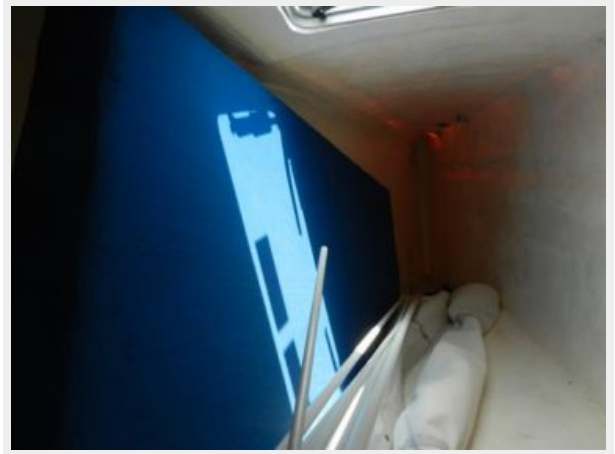
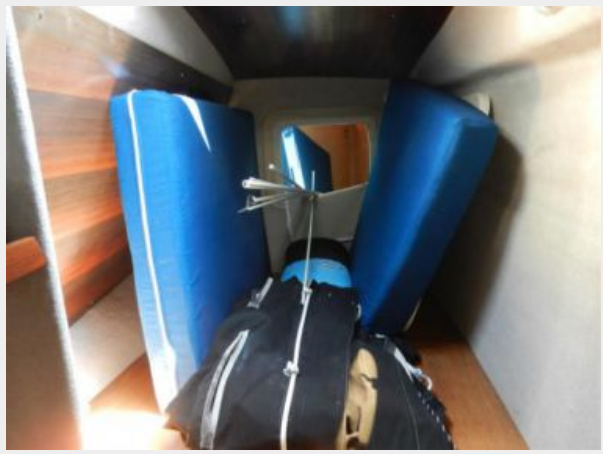
















# CONTACTS

---

Andrey Shestakov, leading yacht broker of the sales department of Shestakov Yacht Sales Inc. Shestakov Yacht Sales Inc., the official representative of the Miami/Fort Lauderdale FL headquarters.

## Contact details

---

Email: [andrey@shestakovyachtsales.com](mailto:andrey@shestakovyachtsales.com)

Web: [shestakovyachtsales.com/en/](http://shestakovyachtsales.com/en/)

## Telephones

---

USA: +1(954)274-4435

## Office hours

---

Monday – Saturday: **9:00 - 21:00** EDT

Sunday: **closed**

## Address

---



Harbour Towne Marina, 850 NE 3rd St,  
STE 213, Dania, FL 33004