

MAKAI — FOUNTAINE PAJOT



Судостроитель: FOUNTAINE PAJOT

Год постройки: 1994

Модель: Катамаран

Цена: ЦЕНА ЯХТЫ ПО ЗАПРОСУ

Местонахождение: United States

Длина общая: 35' 0" (10.67m)

Ширина: 19' 2" (5.84m)

Макс. осадка: 3' 1" (0.94m)

Купить Makai — FOUNTAINE PAJOT а также выбрать подходящую вам яхту из нашего каталога яхт вам поможет опытный яхтенный брокер Андрей Шестаков. На сегодняшний день компания Shestakov Yacht Sales Inc. имеет большое количество яхт в собственном списке продаж, а также тесно сотрудничает со всеми крупными яхтенными производителями по всему миру.

Для того чтобы купить яхту Makai — FOUNTAINE PAJOT а также проконсультироваться по любому вопросу связанному с покупкой, продажей, чартером яхт позвоните по телефону **+7(918)465-66-44**.

ОГЛАВЛЕНИЕ

ОГЛАВЛЕНИЕ	2
ХАРАКТЕРИСТИКИ	3
Обзор	3
Основная информация	6
Размеры	6
Скорость, вместимость и масса	6
Размещение	6
Корпус и палуба	6
Информация о двигателе	7
ПОДРОБНОЕ ОПИСАНИЕ	8
Description	8
Исключения	11
Отказ от ответственности	11
ФОТОГРАФИИ	12
КОНТАКТЫ	21
Контактная информация	21
Телефоны	21
Время работы	21
Адрес	21

ХАРАКТЕРИСТИКИ

Обзор

RECENT PRICE REDUCTION. "Makai" is well equipped for extended self sufficient cruising. This is a owner version layout with 3 cabins and one head. She has a desirable hardtop bimini that has a rain catchment system and also has 6 solar panels which provide all the power you need at anchor.

There is excellent visibility from the helm seat and comprehensive electronic package including Garmin 4210 Chartplotter/GPS, Radar and Autopilot and AIS receiver. New LED tri-color masthead anchor and navigation light. Wide walk around decks and aft deck platform between the steps. Twin Yanmar diesel engines. Electric windlass with good anchor gear, new lectrasan head, new propane system, RIB and outboard, 50' mast height and 3' draft. Bring your gear and go!

- Owner version with large berth forward in the port hull
- Additional hull access forward with opening hatch
- Large head and shower in port aft with door to port engine, batteries and equipment
- Escape hatches in each hull
- Starboard hull has two cabins, fore and aft
- Extra thick cushions in berths
- Starboard engine access under aft berth, Port engine door in head compartment
- Central salon has a wrap around settee with a triangular dining table
- Striking black upholstery
- Nav desk on port corner of settee
- Panoramic wrap around windows with two opening ports forward for great ventilation
- 2 removable interior privacy shades
- Opening hatches w/ canvas covers
- Climma 4,800 btu air conditioning unit for use at dock
- Galley is to the starboard portion of the salon
- Flatscreen TV mounted on bulkhead, can view nav screen on TV
- LED interior lights
- (3) Complete sets of bed linens, comforters, assorted towels
- GALLEY
- The galley up is located in the starboard salon with great wrap around working space and a great ocean view!
- Eno 3 burner propane stove cooktop
- NEW Propane system in lazette including new box, new tank and solinoid
- Isotherm front loading refrigerator
- Engel portable 12V refrigerator/freezer
- SS sink
- Pressure water system

- Cabinets and storage
- Complete with all pans, dishes, drinkware, utensils, etc.
- Magma Kettle BBQ propane grill
- SAILS AND RIGGING
- Z Spar Aluminum mast and boom
- Mast height 50'
- Swept back spreader
- Most running rigging is new
- Sail inventory: Mainsail w/lazy jacks Roller furling headsail Storm Sail Blooper
- (2) #40 Lewmar ST Primary winches on coach roof
- (2) #40 Lewmar ST winches on mast
- Line clutches
- Traveller on hardtop roof with adjustable line clutch on SS pole aft
- ELECTRONICS/NAVIGATION
- Garmin 4210 Chartplotter/GPS & depth
- Garmin Radar Raymarine Autopilot with remote
- AIS receiver
- Raymarine wind indicator
- Plastimo compass
- Standard Horizon VHF at nav desk with RAM mic at helm
- Can also view nav screen on LED TV in salon
- Jensen TV and Jensen DVD player
- Kenwood Stereo
- NEW cockpit speakers
- NEW LED Tri-color masthead anchor and navigation lights
- NEW Florida chartbook and cruising guide
- DECK EQUIPMENT
- Goiot 12V Electric windlass with foot controls on deck
- Large anchor locker Danforth anchor w/ chain and rode
- Suncor 35# Stainless Steel folding anchor w/ 30' chain & 100' braided line
- New heavy duty anchor bridle
- Drogue/sea anchor
- Hardtop bimini on SS posts Water catchment hose connections on roof
- Helm seat
- Wrap around cockpit seating with aft cushion cockpit table
- Stern swim steps w/grab rail
- Transom platform
- Transom shower
- 9'3" RIB Zodiac dingy and 2.2hp outboard engine
- 2 coats Sea Hawk bottom paint 5/16
- (7) PFD's Flares and flare gun flashlights
- Life ring
- Lines and fenders, boat hook, deck brush, jerry jugs
- MECHANICAL

- Twin Yanmar diesel engines 2GM20F Port 16hp, 1073 hrs, Stbd 18 hp 573 hours
- Previous owner reports engine rebuilds, hour difference unknown
- Recent engine service, oil change, new mixing elbow, new impellers
- New Saildrives SD20 5/16
- (2) NEW high decibel high water alarms in engine compartments
- 3 bladed props
- Morse controls
- Racor 500 Fg and secondary filter
- Waterlift muffler
- (3) Fire extinguishers
- Jabsco head NEW Lectra scan system and new hoses
- (4) Rule bilge pumps
- NEW CO2/Smoke detectors
- NEW LP Tank w/pressure gauge/solinoid and new vented box in lazarette
- Climma 4,800 btu air conditioning
- Spare clamps, filters, impellers, oil
- ELECTRICAL
- (6) Solar panels mounted on hardtop bimini 420 watts, enough power to run refrigeration and lights on extending anchoring
- Xantrex 1500 Invertor
- (4) wet-acid sealed batteries
- (1 new) Portable battery charger
- AC/DC electric panel
- Shore power cord
- LED interior lights
- MANUFACTURER DESCRIPTION
- Naturally convivial, the Tobago 35 gathers the galley and the navigation table in the saloon. This allows you to enjoy the superb panoramic view while cooking or navigating, protected from the heat by the over-hang located outside on the roof. The hulls, entirely dedicated to the cabins and the head, remain private (owner's cabin with head and shower on port side, two guest cabins on starboard side). Naturally seaworthy, the Tobago 35 is an innovative-looking sailing vessel. Take the helm and appreciate the power. With the autopilot and the raised platform, you can have a drink away from the motion of the waves. Every Fountaine Pajot is built to the highest ISO 9002 European standard for offshore yachts, incorporating vacuum-bagging construction and careful hand lay-up with sophisticated high-strength resins which results in an extremely high strength-to-weight ratio. The keels are fixed and filled with foam, protecting the rudders and shafts. Should they strike a reef or submerged object they harmlessly break away without allowing water intrusion. Fountaine Pajot catamarans use nets forward and eliminate weight in the forward hulls to prevent pitching and aid bow recovery in heavy seas. Flat deck spaces, and especially the relatively flat coach roof, make it comfortable and easy to move around and handle sails. A unique, patented feature is the eyebrow overhang of the coach roof over the window areas. This prevents the high sun from creating a greenhouse effect inside the boat.

- **DISCLAIMER:** The Company offers the details of this vessel in good faith but cannot guarantee or warrant the accuracy of this information nor warrant the condition of the vessel. A buyer should instruct his agents, or his surveyors, to investigate such details as the buyer desires validated. This vessel is offered subject to prior sale, price change, or withdrawal without notice.

Основная информация

Тип судна: Катамаран

Подкатегория: Крейсерская яхта

Модельный год: 1994

Год постройки: 1994

Страна: United States

Размеры

Длина общая: 35' 0" (10.67m)

Длина по ватерлинии: 32' 3" (9.83m)

Ширина: 19' 2" (5.84m)

Макс. осадка: 3' 1" (0.94m)

Скорость, вместимость и масса

Вместимость воды: 66 Gallons

Объем топливного бака: 37 Gallons

Размещение

Всего кают: 3

Всего коек: 6

Всего ком. состава: 1

Корпус и палуба

Материал корпуса: Fiberglass

Информация о двигателе

Двигатели: 2

Производитель: Yanmar

Модель: 2GM20F

Тип топлива: Diesel

ПОДРОБНОЕ ОПИСАНИЕ

Description

"Makai" has just returned from the Bahamas and is well equipped for extended self sufficient cruising. This is a owner version layout with 3 cabins and one head. She has a desirable hardtop bimini that has a rain catchment system and also has 6 solar panels which provide all the power you need at anchor.

There is excellent visibility from the helm seat and comprehensive electronic package including Garmin 4210 Chartplotter/GPS, Radar and Autopilot and AIS receiver. New LED tri-color masthead anchor and navigation light. Wide walk around decks and aft deck platform between the steps. Twin Yanmar diesel engines. Electric windlass with good anchor gear, new lectrasan head, new propane system, RIB and outboard, 50' mast height and 3' draft. Bring your gear and go!

- Owner version with large berth forward in the port hull
- Additional hull access forward with opening hatch
- Large head and shower in port aft with door to port engine, batteries and equipment
- Escape hatches in each hull
- Starboard hull has two cabins, fore and aft
- Extra thick cushions in berths
- Starboard engine access under aft berth, Port engine door in head compartment
- Central salon has a wrap around settee with a triangular dining table
- Striking black upholstery
- Nav desk on port corner of settee
- Panoramic wrap around windows with two opening ports forward for great ventilation
- 2 removable interior privacy shades
- Opening hatches w/ canvas covers
- Climma 4,800 btu air conditioning unit for use at dock
- Galley is to the starboard portion of the salon
- Flatscreen TV mounted on bulkhead, can view nav screen on TV
- LED interior lights
- (3) Complete sets of bed linens, comforters, assorted towels
- GALLEY
- The galley up is located in the starboard salon with great wrap around working space and a great ocean view!
- Eno 3 burner propane stove cooktop
- NEW Propane system in lazette including new box, new tank and solinoid
- Isotherm front loading refrigerator
- Engel portable 12V refrigerator/freezer
- SS sink
- Pressure water system

- Cabinets and storage
- Complete with all pans, dishes, drinkware, utensils, etc.
- Magma Kettle BBQ propane grill
- SAILS AND RIGGING
- Z Spar Aluminum mast and boom
- Mast height 50'
- Swept back spreader
- Most running rigging is new
- Sail inventory: Mainsail w/lazy jacks Roller furling headsail Storm Sail Blooper
- (2) #40 Lewmar ST Primary winches on coach roof
- (2) #40 Lewmar ST winches on mast
- Line clutches
- Traveller on hardtop roof with adjustable line clutch on SS pole aft
- ELECTRONICS/NAVIGATION
- Garmin 4210 Chartplotter/GPS & depth
- Garmin Radar Raymarine Autopilot with remote
- AIS receiver
- Raymarine wind indicator
- Plastimo compass
- Standard Horizon VHF at nav desk with RAM mic at helm
- Can also view nav screen on LED TV in salon
- Jensen TV and Jensen DVD player
- Kenwood Stereo
- NEW cockpit speakers
- NEW LED Tri-color masthead anchor and navigation lights
- NEW Florida chartbook and cruising guide
- DECK EQUIPMENT
- Goiot 12V Electric windlass with foot controls on deck
- Large anchor locker Danforth anchor w/ chain and rode
- Suncor 35# Stainless Steel folding anchor w/ 30' chain & 100' braided line
- New heavy duty anchor bridle
- Drogue/sea anchor
- Hardtop bimini on SS posts Water catchment hose connections on roof
- Helm seat
- Wrap around cockpit seating with aft cushion cockpit table
- Stern swim steps w/grab rail
- Transom platform
- Transom shower
- 9'3" RIB Zodiac dingy and 2.2hp outboard engine
- 2 coats Sea Hawk bottom paint 5/16
- (7) PFD's Flares and flare gun flashlights
- Life ring
- Lines and fenders, boat hook, deck brush, jerry jugs
- MECHANICAL

- Twin Yanmar diesel engines 2GM20F Port 16hp, 1073 hrs, Stbd 18 hp 573 hours
- Previous owner reports engine rebuilds, hour difference unknown
- Recent engine service, oil change, new mixing elbow, new impellers
- New Saildrives SD20 5/16
- (2) NEW high decibel high water alarms in engine compartments
- 3 bladed props
- Morse controls
- Racor 500 Fg and secondary filter
- Waterlift muffler
- (3) Fire extinguishers
- Jabsco head NEW Lectra scan system and new hoses
- (4) Rule bilge pumps
- NEW CO2/Smoke detectors
- NEW LP Tank w/pressure gauge/solinoid and new vented box in lazarette
- Climma 4,800 btu air conditioning
- Spare clamps, filters, impellers, oil
- ELECTRICAL
- (6) Solar panels mounted on hardtop bimini 420 watts, enough power to run refrigeration and lights on extending anchoring
- Xantrex 1500 Invertor
- (4) wet-acid sealed batteries
- (1 new) Portable battery charger
- AC/DC electric panel
- Shore power cord
- LED interior lights
- MANUFACTURER DESCRIPTION
- Naturally convivial, the Tobago 35 gathers the galley and the navigation table in the saloon. This allows you to enjoy the superb panoramic view while cooking or navigating, protected from the heat by the over-hang located outside on the roof. The hulls, entirely dedicated to the cabins and the head, remain private (owner's cabin with head and shower on port side, two guest cabins on starboard side). Naturally seaworthy, the Tobago 35 is an innovative-looking sailing vessel. Take the helm and appreciate the power. With the autopilot and the raised platform, you can have a drink away from the motion of the waves. Every Fountaine Pajot is built to the highest ISO 9002 European standard for offshore yachts, incorporating vacuum-bagging construction and careful hand lay-up with sophisticated high-strength resins which results in an extremely high strength-to-weight ratio. The keels are fixed and filled with foam, protecting the rudders and shafts. Should they strike a reef or submerged object they harmlessly break away without allowing water intrusion. Fountaine Pajot catamarans use nets forward and eliminate weight in the forward hulls to prevent pitching and aid bow recovery in heavy seas. Flat deck spaces, and especially the relatively flat coach roof, make it comfortable and easy to move around and handle sails. A unique, patented feature is the eyebrow overhang of the coach roof over the window areas. This prevents the high sun from creating a greenhouse effect inside the boat.

- **DISCLAIMER:** The Company offers the details of this vessel in good faith but cannot guarantee or warrant the accuracy of this information nor warrant the condition of the vessel. A buyer should instruct his agents, or his surveyors, to investigate such details as the buyer desires validated. This vessel is offered subject to prior sale, price change, or withdrawal without notice.

Исключения

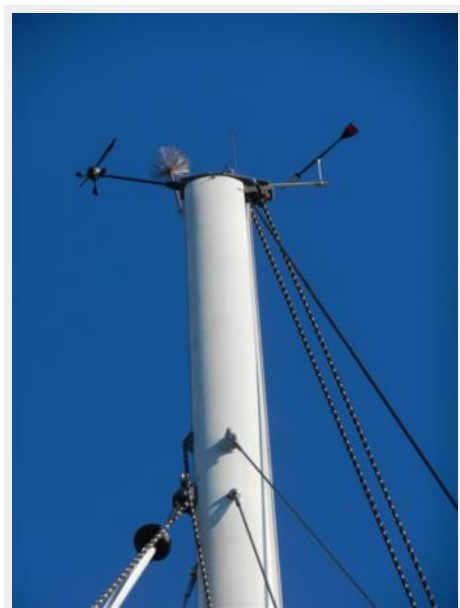
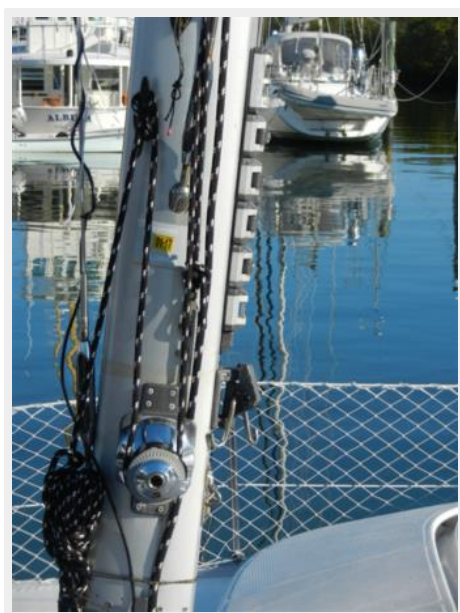
При продаже яхты исключаются личные вещи владельца.

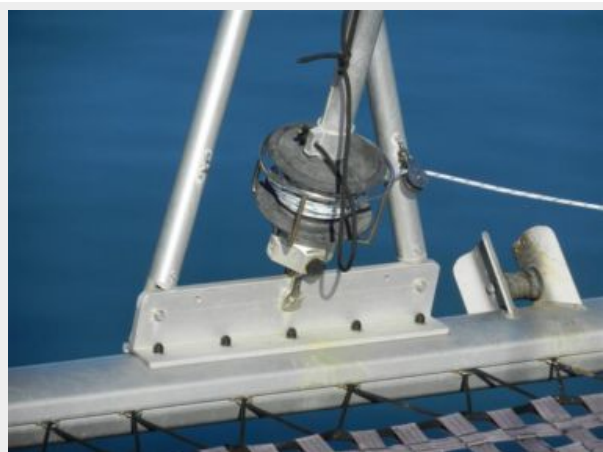
Отказ от ответственности

Компания предоставляет описание судна или яхты добросовестно, но не может гарантировать точность этой информации, а также не ручается за техническое состояние. Покупатель должен проинструктировать своих агентов или оценщиков исследовать представленную информацию более подробно, по собственному желанию. Продажа судна или яхты, изменение цены или снятие с продажи будет происходить без предварительного уведомления.

ФОТОГРАФИИ





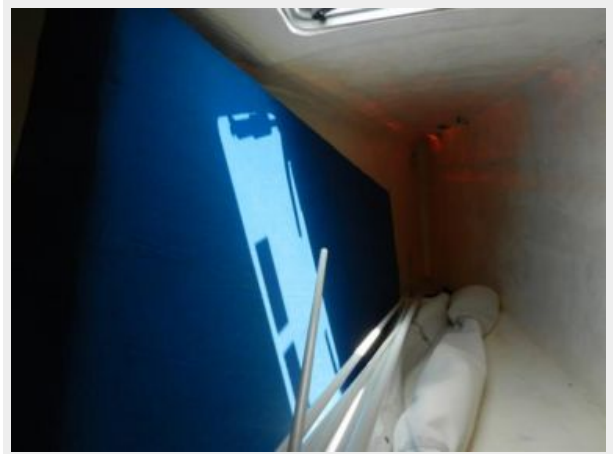
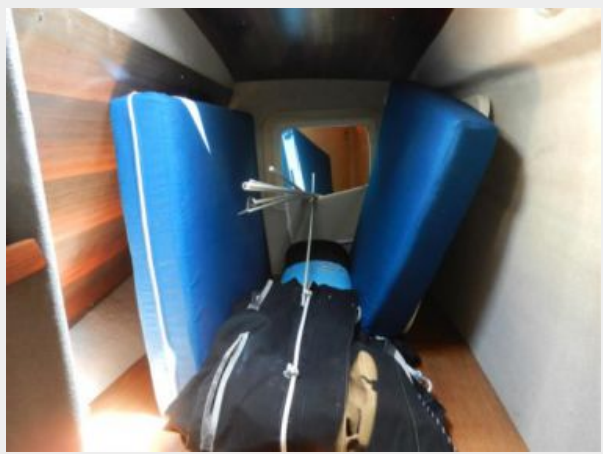














КОНТАКТЫ

Андрей Шестаков (Andrey Shestakov) – ведущий яхтенный брокер отдела продаж яхт и судов компании Shestakov Yacht Sales Inc. Официальный представитель Shestakov Yacht Sales Inc. для русскоговорящих клиентов в центральном офисе компании в Майами/Форт Лодердейл/Флорида/США.

Контактная информация

Email: andrey@shestakovyachtsales.com

Web: shestakovyachtsales.com

Телефоны

Краснодарский край: **+7(918)465-66-44**

США, Майами, Флорида: **+1(954)274-4435**

Время работы

Понедельник – Суббота: **9:00 - 21:00**
EDT

Воскресенье: **Закрито**

Адрес



Harbour Towne Marina, 850 NE 3rd St,
STE 213, Dania, FL 33004