

SAILACIOUS — TAYANA



Builder: TAYANA

Year Built: 1977

Model: Cruising Sailboat

Price: PRICE ON APPLICATION

Location: Antigua and Barbuda

LOA: 37' 0" (11.28m)

Beam: 11' 6" (3.51m)

Min Draft: 5' 10" (1.78m)

Our experienced yacht broker, Andrey Shestakov, will help you choose and buy a yacht that best suits your needs **Sailacious — TAYANA** from our catalogue. Presently, at Shestakov Yacht Sales Inc., we have a wide variety of yachts available on our sale's list. We also work in close contact with all the big yacht manufacturers from all over the world.

If you would like to buy a yacht **Sailacious — TAYANA** or would like help answering any questions concerning purchasing, selling or chartering a yacht, please call **+1(954)274-4435**

TABLE OF CONTENTS

TABLE OF CONTENTS	2
SPECIFICATIONS	3
Overview	3
Basic Information	6
Dimensions	6
Speed, Capacities and Weight	6
Accommodations	7
Hull and Deck Information	7
Engine Information	7
PHOTOS	8
CONTACTS	10
Contact details	10
Telephones	10
Office hours	10
Address	10

SPECIFICATIONS

Overview

Great fully equipped cruising boat in the best cruising ground in the world!

Beat the long slog to windward to the greatest cruising ground in the world. Sailacious is already in Antigua. Easy to fly in, great access to parts and services, no big taxes and right where you want to be!

No teak deck!

Bob Perry's Tayana 37 is one of the most popular cruising boats ever built. They've been built almost 700 of them over the course of 30 years of making the same model because they're so beloved. Their beauty, comfort and quality construction have stood the test of time. It's ready to cruise because the owners are cruising now. Don't wait. Someone will snap this one up in a hurry.

- **16,000 btu Air conditioning**
- **SSB radio**
- **2 205 watt solar panels**
- **MPPT solar controller**

Boat Name Sailacious Specs Builder: Ta Yang Yachts Designer: Bob Perry Flag of Registry: United Kingdom Keel: Full Hull Shape: Monohull Dimensions LOA: 42 ft 0 in Beam: 11 ft 6 in LWL: 30 ft 0 in Length on Deck: 37 ft 0 in Minimum Draft: 5 ft 10 in Displacement: 23400 lbs Ballast: 8000 lbs Bridge Clearance: 55 ft 0 in Engines Engine 1: Engine Brand: Perkins Year Built: 1978 Engine Model: 4-108 Engine Type: Inboard Engine/Fuel Type: Diesel Propeller: 3 blade propeller Drive Type: Direct Drive Engine Power: 50 HP Tanks Fresh Water Tanks: 1 Stainless steel (100 Gallons) Fuel Tanks: 1 (100 Gallons) Holding Tanks: 1 Fiberglass (40 Gallons) Accommodations Number of single berths: 1 Number of double berths: 3 Number of cabins: 2 Number of heads: 1 Electronics DVD player Wind speed and direction Depthsounder Compass Plotter Navigation center Radio VHF Autopilot Radar TV set Sails Storm jib Furling genoa Battened mainsail Genoa Rigging Steering wheel Inside Equipment Battery charger Deep freezer Air conditioning Electric bilge pump Hot water Marine head Manual bilge pump Refrigerator Fresh water maker Sea water pump Heating Electrical Equipment Shore power inlet Inverter Electrical Circuit: 110V Outside Equipment/Extras Liferaft Cockpit shower Davits Solar panel Cockpit table Teak cockpit Cockpit cushions Swimming ladder Total Liferaft Capacity: 4 Manual windlass Covers Cockpit cover Lazyjacks Mainsail cover Bimini Top Genoa cover

Accommodations

A few steps down from the cockpit leads to the saloon. To port is a U shaped galley. Just forward of the galley is a U shaped settee that converts to a double berth when needed. forward of the port settee is a shelf against the forward bulkhead and a Sodastream beverage maker is

built in. Opposite, on the starboard side is a full length straight settee. The starboard settee pulls out to sleep two. Just aft of the starboard settee is the VIP stateroom with a forward facing nav station. Aft of the nav station is a quarter berth which many cruisers use for storage. Nestled in the U shaped settee is a table. The sharp corners of the settees are ideal for sitting leaning back with your feet up to read or lounge. Just forward of the port settee is the head with access to the saloon and private access from the owner's cabin forward. In the passage to the owner's cabin on the starboard side beautiful handmade teak joinery provides ample storage. The owner's private cabin forward features a large vee berth and a large opening hatch for light and ventilation. Several opening bronze and glass ports and a classic teak butterfly hatch offer ample light and ventilation. Fans aid the ventilation and reverse cycle air conditioning make the interior comfortable in any weather while on shorepower.

- Sleeping accommodations for seven
- 16,000 btu reverse cycle Marine Air Systems VCD 16K air conditioning with digital control
- A pocket door and loovered doors above the nav station can close to make a private VIP stateroom for guests
- The loovered doors above the nav station open to the saloon when no guests are aboard
- Classic teak butterfly hatch in saloon for light and ventilation
- Many bronze and safety glass opening ports for light and ventilation
- 12 volt fans for ventilation
- Dining table serves five
- Tremendous storage throughout
- Beautiful custom teak joinery

Galley

- 3 burner Smev stainless steel propane cooktop
- Adler Barbour C200 4 cubic foot refrigerator with top opening
- Super efficient Engel chest freezer
- Deep stainless steel sink with hot & cold pressure water
- Filtered drinking water tap at galley sink
- Lots of galley storage
- Salt water pump at galley sink
- Sodastream beverage system with 20# external CO2 tank

Electrical

- 4 Trojan T105 plus 6 volt house batteries - house bank capacity 450 amp hours
- 12 volt engine start battery
- 2 205 watt solar panels
- MPPT solar controller
- Xantrex 1800 I 110 volt inverter
- 20 amp battery charger
- 2 50' shorepower cords

Sails & Rigging

- 130% genoa on Harken roller furler
- Mainsail with stack pack
- Heavy duty storm staysail on Profurl roller furler
- All running rigging led aft to cockpit

Deck & Hull

- **No teak deck - never had it!**
- 100 gal. black iron fuel tank
- 100 gal. stainless steel water tank

- Bimini & dodger

- Dinghy davits

- Manual windlass

- CQR 45# primary anchor with 150' chain and 100' rope rode
- CQR 35# secondary anchor with 30' chain and 200' rope rode
- Life Sling
- Jerry jug corral with 5 6 gal. jugs and sun cover
- Custom wind chutes over hatches
- Shadetree cover
- Magma Newport barbecue grill with 6# external propane tank
- Avon 4 person liferaft - out of date

Electronics

- Raymarine C80 color chartplotter with radar overlay
- Raymarine 15 mile radome
- Raymarine ST60 autopilot control head
- Raymarine S30 course computer
- Raymarine Type 2 autopilot linear drive
- Raymarine ST60 wind instrument
- Raymarine ST60 depth sounder
- Standard Horizon DSC VHF radio at nav station
- Standard Horizon RAM mic with full VHF control mounted at helm
- ICOM IC-710 SSB radio
- ICOM AT 130 automatic tuner
- Jensen iPod compatible stereo

Engine and Mechanical

- Perkins 4-108 50 hp diesel engine
- **Cutlass bearing replaced and engine re-aligned - NEW 2015!**
- 2 automatic bilge pumps
- Manual bilge pump
- 100 gal. stainless steel water tank
- 12 gal/hr Aquanu MD01 watermaker - cracked membrane end plug
- 40 gal. fiberglass holding tank with macerator pump
- 20 gal. fiberglass graywater tank
- 6 gal. water heater
- Saltwater washdown pump

Basic Information

Category: Cruising Sailboat

Sub Category: Cutter

Model Year: 1977

Year Built: 1977

Country: Antigua and Barbuda

Dimensions

LOA: 37' 0" (11.28m)

LWL: 30' 0" (9.14m)

Beam: 11' 6" (3.51m)

Min Draft: 5' 10" (1.78m)

Clearance: 55' 0" (16.76m)

Speed, Capacities and Weight

Displacement: 23400 Pounds

Water Capacity: 100 Gallons

Holding Tank: 40 Gallons

Fuel Capacity: 100 Gallons

Accommodations

Total Cabins: 2

Total Berths: 4

Total Heads: 1

Hull and Deck Information

Hull Material: Fiberglass

Hull Finish: Stainless Steel

Engine Information

Engines: 1

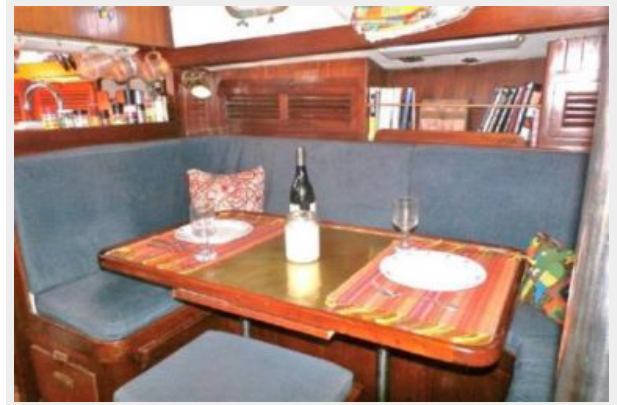
Manufacturer: Perkins

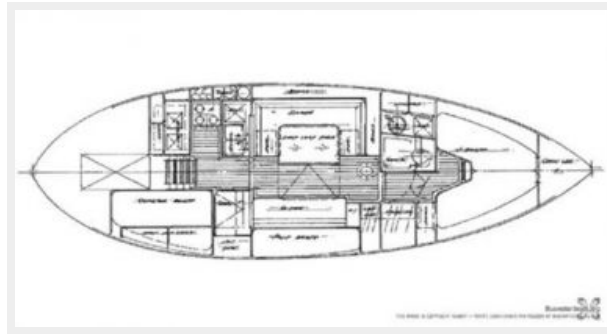
Model: 4-108

Engine Type: Inboard

Fuel Type: Diesel

PHOTOS





CONTACTS

Andrey Shestakov, leading yacht broker of the sales department of Shestakov Yacht Sales Inc. Shestakov Yacht Sales Inc., the official representative of the Miami/Fort Lauderdale FL headquarters.

Contact details

Email: andrey@shestakovyachtsales.com

Web: shestakovyachtsales.com/en/

Telephones

USA: +1(954)274-4435

Office hours

Monday – Saturday: **9:00 - 21:00** EDT

Sunday: **closed**

Address



Harbour Towne Marina, 850 NE 3rd St,
STE 213, Dania, FL 33004