

FLAWLESS — SEA RAY



Builder: [SEA RAY](#)

Year Built: 2014

Model: Motor Yacht

Price: **PRICE ON APPLICATION**

Location: United States

LOA: 65' 0" (19.81m)

Beam: 17' 2" (5.23m)

Max Draft: 5' 1" (1.55m)

Cruise Speed: 27 Kts. (31 MPH)

Max Speed: 31 Kts. (36 MPH)

Our experienced yacht broker, Andrey Shestakov, will help you choose and buy a yacht that best suits your needs **Flawless — SEA RAY** from our catalogue. Presently, at Shestakov Yacht Sales Inc., we have a wide variety of yachts available on our sale's list. We also work in close contact with all the big yacht manufacturers from all over the world.

If you would like to buy a yacht **Flawless — SEA RAY** or would like help answering any questions concerning purchasing, selling or chartering a yacht, please call **+1(954)274-4435**

TABLE OF CONTENTS

TABLE OF CONTENTS	2
SPECIFICATIONS	4
Basic Information	4
Dimensions	4
Speed, Capacities and Weight	4
Accommodations	4
Hull and Deck Information	5
Engine Information	5
DETAILED INFORMATION	6
Vessel Walkthrough	6
Highlights	6
Exterior	7
Lazarette	8
Aft Deck	8
Salon/Galley	8
Helm / Electronics	9
Master Stateroom	9
Master Head	10
VIP Stateroom (Bow)	10
VIP Head	10
Port Stateroom	10
Starboard Stateroom	11
Guest Head	11
Flybridge	11
Engine Room	12
Exclusions	12
Disclaimer	12
PHOTOS	13

CONTACTS	19
Contact details	19
Telephones	19
Office hours	19
Address	19

SPECIFICATIONS

Basic Information

Category: Motor Yacht

Model Year: 2015

Year Built: 2014

Country: United States

Vessel Top: Hardtop

Fly Bridge: Yes

Dimensions

LOA: 65' 0" (19.81m)

Beam: 17' 2" (5.23m)

Max Draft: 5' 1" (1.55m)

Speed, Capacities and Weight

Cruise Speed: 27 Kts. (31 MPH)

Max Speed: 31 Kts. (36 MPH)

Displacement: 80500 Pounds

Gross Tonnage: 40 Pounds

Water Capacity: 280 Gallons

Holding Tank: 100 Gallons

Fuel Capacity: 1150 Gallons

Accommodations

Total Cabins: 4

Total Berths: 6

Sleeps: 8

Total Heads: 3

Crew Cabin: 1

Crew Berths: 2

Crew Sleeps: 2

Crew Heads: 1

Hull and Deck Information

Hull Material: Fiberglass

Hull Configuration: Deep Vee

Hull Color: Satin Beige

Hull Designer: Sea Ray

Exterior Designer: Sea Ray

Interior Designer: Sea Ray

Engine Information

Engines: 2

Manufacturer: CAT

Model: C-18

Engine Type: Inboard

Fuel Type: Diesel

DETAILED INFORMATION

Vessel Walkthrough

Flawless is 2015 L650 Fly by Sea Ray that is a four stateroom and four head vessel that has been exclusively freshwater kept up until February 2018. Loaded with options sure to please both captains and great for entertaining. Come step aboard this upgraded vessel with a hardtop flybridge, bow & stern thrusters, KVH HD7/Satellite TV, and wine cooler.

Flawless' teak aft deck is perfect for guests with plenty of seating at the high gloss teak table. Lounge the day away on the on the sunpad cushions and the aft deck refrigerator and grill that are just steps away. Moving forward into the salon the upgraded walnut wood blinds and carpets that will stand out. Continuing forward to the galley, keep your favorite wines in the wine cooler. The lower and upper helm is an operator's dream with numerous options including Raymarine Electronics Package, command view, and thermal imaging camera.

The full beam master stateroom has a queen sized berth and perfect for a quiet night of relaxing. Complete with a refrigerator, safe, KVH HD7 Satellite TV, and entertainment system, this owner's retreat is specular. The VIP Stateroom (Bow) has a queen sized berth the port & starboard staterooms each have twin sized berths. Each room has upgraded satellite TV systems. The VIP Stateroom has access to a private head while the port & starboard staterooms share access to the guest head.

Come aboard **Flawless!** She is located in Fort Lauderdale, FL. To visit the slideshow link, type [http:// then caryjohn.zenfolio.com/p273666639/slideshow](http://then Caryjohn.zenfolio.com/p273666639/slideshow) .

Highlights

- Painted Hull - Satin Beige
- Fresh Water Kept
- Kept Under Cover
- Flybridge hardtop, with Sunroof opening, Electric dimmer & Night lighting
- Bow & Stern Thrusters
- Underwater transom lighting
- Teak - Swim platform, steps to aft deck, aft deck, bow seating area, steps to flybridge, and flybridge
- Sunshade - Bow seating
- High gloss teak table - Bow seating
- Audio system - Bow seating
- Stainless steel anchor
- Multi-station joystick docking controls - Aft deck
- High gloss teak table - Aft deck
- Refrigerator - Aft deck

- Grill - Aft deck
- Sunpad cushions - Aft deck
- KVH HD7 Satellite Antenna for True HD Programming - Salon & All Staterooms
- Walnut wood blinds - Interior
- Upgraded Nibanna/Ridge carpets - Interior
- Wine cooler - Galley
- Water purifier system - Galley & Ice makers
- Pantograph door - Lower helm/Galley area
- Raymarine Electronics package - Lower & Upper helms
- Command view - Lower & Upper helms
- Thermal imaging camera - Lower & Upper helms
- Refrigerator - Master Stateroom
- Safe - Master Stateroom
- TV/DVD & Gaming Port - Port & Starboard Staterooms
- Electric Retractable Awning (aft location) - Flybridge
- (2) High Gloss Teak Tables (Port & Aft) - Flybridge
- Sunpad - Flybridge
- Transformer Shore Power ISO Boost - Electrical
- A/C & Heating Upgrade - Salon
- Additional Fuel Capacity to 1150 Gallons
- Oil Changer System - Engine room

Exterior

- Painted Hull - Satin Beige: **UPGRADE**
- Underwater transom lighting: **UPGRADE**
- Teak - Swim platform, steps to aft deck, & bow seating area: **UPGRADE**
- Sunshade - Bow seating: **UPGRADE**
- High gloss teak table - Bow seating: **UPGRADE**
- Audio system - Bow seating: **UPGRADE**
- Stainless steel anchor: **UPGRADE**
- Bow rail, 316, Stainless steel w/welded Stanchions
- (10) Cleats, Thru-Bolted - Stainless steel
- Deck Rails, 316 Stainless steel
- Hull Windows, Smoked Acrylic
- Lights Navigation
- Portlights (Opening)
- Vent System, engine room
- Windshield, Tempered/Tinted Glass w/Electric Opening Window (Starboard)
- (3) Windshield wipers
- Entry to Lazarette (from swim platform)

Lazarette

- A/C (6,000 BTU)
- Vacuflush head
- Mirror
- Portlight, opening
- Sink w/faucet
- Shower
- Storage cabinet
- Towel ring

Aft Deck

- Teak - Steps to aft deck & aft deck: **UPGRADE**
- Multi-station joystick docking controls: **UPGRADE**
- High gloss teak table: **UPGRADE**
- Refrigerator: **UPGRADE**
- Grill: **UPGRADE**
- Sunpad cushions: **UPGRADE**
- Gates, Side Boarding (Port & Starboard)
- Handrails, 316 Stainless Steel
- Seating w/storage

Salon/Galley

- Walnut wood blinds - Interior: **UPGRADE**
- Upgraded Nibanna/Ridge carpets - Interior: **UPGRADE**
- *Salon*
- KVH HD7 Antenna for True HD Programming in Salon: **UPGRADE**
- Walnut Wood Blinds: **UPGRADE**
- End table w/ Solid Surface top
- Entertainment Center
 - Bose Soundbar
 - 50" LED Flatscreen
 - Blu-Ray Player
 - Universal Remote Control
- Wood Flooring
- (2) Ottomans with Movable dual purpose tops & storage below
- Sofas w/Storage below
- Storage cabinets
- *Galley*
- Wine cooler - Galley: **UPGRADE**

- Water purifier system - Galley & Icemakers: **UPGRADE**
- Pantograph door - Lower helm/Galley area: **UPGRADE**
- Refrigerator, under counter
- Freezer w/icemaker
- Three burner stove
- Microwave/convection oven
- Cabinets for storage
- Wood floors
- Curved seating w/Storage below
- Table w/High Gloss Wood surface

Helm / Electronics

- (3) Raymarine GS165 + Auxiliary unit for upper helm: **UPGRADE**
- Raymarine i50 Depth Sounder: **UPGRADE**
- Raymarine Network Cameras: **UPGRADE**
- Thermal Imaging Camera: **UPGRADE**
- Command View: **UPGRADE**
- Autopilot
- Bow & Stern Thruster Controls
- Alarms, High Water - Bilge & Cabin
- Compass
- Instrumentation:
 - (2) 6.3" LCD Display w/Auto dimming & enhanced contrast in Daylight, Graphic presentation of Analogue instruments, Display of alarm status & fuel flow
 - (2) Fuel Gauges
- Dual Stidd Helm Chairs: Lower Helm
- Electronic Shift & Throttle Controls
- Power Steering w/Tilt Wheel
- Wiper Controls
- VHF Radio w/Remote Speaker

Master Stateroom

- KVH HD7 Antenna for True HD Programming: **UPGRADE**
- Refrigerator: **UPGRADE**
- Safe: **UPGRADE**
- Full Beam w/Queen Interspring Mattress
- Cedar Lined Closet
- Dresser (Port & Starboard)
- Entertainment Center
 - Bose Soundbar

- 40" LED Flatscreen
- Blu-Ray Player
- Universal Remote Control
- (2) NightstandsPortlight, opening
- Vanity, pull out w/removable seat

Master Head

- Private access from Master Stateroom
- His & Her Sinks
- Vanity
- Tile flooring
- Vacuflush head
- Portlight, opening
- Shower w/seat, Adjustable Shower wand, rain shower & Acrylic door
- Medicine cabinet w/storage

VIP Stateroom (Bow)

- Satellite TV: **UPGRADE**
- Queen sized bed w/Interspring mattress, pillows, sheets, coordinated spread & storage
- Door w/access to Dedicated Head/Shower
- Entertainment Center
 - Bose Soundbar
 - 32" LED TV
 - Blu-Ray Player
- Cedar lined hanging locker
- Skylight
- Drawers for storage

VIP Head

- Vanity
- Tile flooring
- Vacuflush head
- Portlight, opening
- Shower w/seat, Adjustable Shower wand, rain shower & Acrylic door
- Medicine cabinet w/storage

Port Stateroom

- TV & Gaming Port: **UPGRADE**
- Satellite TV: **UPGRADE**
- (2) Twin Beds w/Pillows, Sheets, Coordinated Spreads, & Storage
- Carpeting
- Cedar lined hanging locker
- Storage Cabinet
- Storage Shelf
- LED TV w/Blu-Ray Player

Starboard Stateroom

- TV & Gaming Port: **UPGRADE**
- Satellite TV: **UPGRADE**
- (2) Twin Beds w/Pillows, Sheets, Coordinated Spreads, & Storage
- Carpeting
- Cedar lined hanging locker
- Storage Cabinet
- Storage Shelf
- LED TV w/Blu-Ray Player

Guest Head

- Vanity
- Tile flooring
- Vacuflush head
- Portlight, opening
- Shower w/seat, Adjustable Shower wand, rain shower & Acrylic door
- Medicine cabinet w/storage

Flybridge

- Electric Retractable Awning (aft location): **UPGRADE**
- (2) High Gloss Teak Tables (Port & Aft): **UPGRADE**
- Sunpad: **UPGRADE**
- Seating - Forward w/opposing storage
- Seating - Aft in U-shape w/opposing storage
- Beverage holders
- Stereo
 - AM/FM
 - Bluetooth Connectivity
 - Sirius Satellite Receiver

- Ipod Interface
- MP3 Port
- (2) Speakers
- Digital Cockpit Remote Control
- Wet Bar
 - Sink
 - Faucet
 - Solid surface counter top
 - Refridgerator
 - Grill
 - Stainless Steel Handrail
 - Trash Receptacle

Engine Room

- T-CAT C18 1150Hp (320 & 318 Hours - Port & Starboard as of 6/18)
- Onan 29kW Diesel Generator (360 Hours - Port & Starboard as of 9/17): **UPGRADE**
- A/C and Heating: **UPGRADE**
- Additional Fuel Capacity to 1150 Gallons: **UPGRADE**
- Thermal Imaging Camera: **UPGRADE**
- Transformer ISO Boost: **UPGRADE**
- Bow & Stern Thrusters
- Bilge pumps 24V Automatic Highwater (1 Bilge, 1 Cabin)
- Fire suppression system - Automatic w/Diesel Shutdown, Override & Manual Pull
- Insulation, Engine room - 2" w. Loaded Vinyl barrier
- Diesel fuel system - Electric w/Transfer pump
- Seacocks on all underwater fittings
- Hydraulic trim tabs
- Water heater, 240V, (20 gallon)
- Water Purifier System (Galley & Ice makers)

Exclusions

Owner's personal belongings.

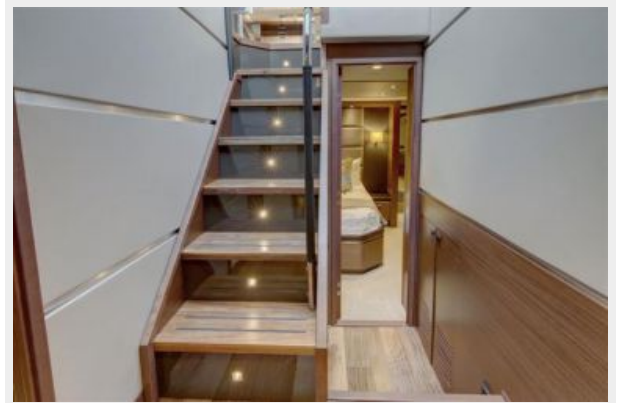
Disclaimer

The Company offers the details of this vessel or yacht in good faith but cannot guarantee or warrant the accuracy of this information nor warrant the condition of the vessel. A buyer should instruct his representatives, agents, or his surveyors, to investigate such details as the buyer desires validated. This vessel or yacht is offered subject to prior sale, price change, or withdrawal without notice.

PHOTOS













CONTACTS

Andrey Shestakov, leading yacht broker of the sales department of Shestakov Yacht Sales Inc. Shestakov Yacht Sales Inc., the official representative of the Miami/Fort Lauderdale FL headquarters.

Contact details

Email: andrey@shestakovyachtsales.com

Web: shestakovyachtsales.com/en/

Telephones

USA: +1(954)274-4435

Office hours

Monday – Saturday: **9:00 - 21:00** EDT

Sunday: **closed**

Address



Harbour Towne Marina, 850 NE 3rd St,
STE 213, Dania, FL 33004