

FLAWLESS — SEA RAY



Судостроитель: SEA RAY

Год постройки: 2014

Модель: Моторная яхта

Цена: **ЦЕНА ЯХТЫ ПО ЗАПРОСУ**

Местонахождение: United States

Длина общая: 65' 0" (19.81m)

Ширина: 17' 2" (5.23m)

Макс. осадка: 5' 1" (1.55m)

Крейс. скорость: 27 Kts. (31 MPH)

Макс. скорость: 31 Kts. (36 MPH)

Купить **Flawless — SEA RAY** а также выбрать подходящую вам яхту из нашего **каталога яхт** вам поможет опытный яхтенный брокер Андрей Шестаков. На сегодняшний день компания **Shestakov Yacht Sales Inc.** имеет большое количество яхт в **собственном списке продаж**, а также тесно сотрудничает со всеми крупными яхтенными производителями по всему миру.

Для того чтобы купить яхту **Flawless — SEA RAY** а также проконсультироваться по любому вопросу связанному с покупкой, продажей, чартером яхт позвоните по телефону **+7(918)465-66-44**.

ОГЛАВЛЕНИЕ

| | |
|-------------------------------|----|
| ОГЛАВЛЕНИЕ | 2 |
| ХАРАКТЕРИСТИКИ | 4 |
| Основная информация | 4 |
| Размеры | 4 |
| Скорость, вместимость и масса | 4 |
| Размещение | 4 |
| Корпус и палуба | 5 |
| Информация о двигателе | 5 |
| ПОДРОБНОЕ ОПИСАНИЕ | 6 |
| Vessel Walkthrough | 6 |
| Highlights | 6 |
| Exterior | 7 |
| Lazarette | 8 |
| Aft Deck | 8 |
| Salon/Galley | 8 |
| Helm / Electronics | 9 |
| Master Stateroom | 9 |
| Master Head | 10 |
| VIP Stateroom (Bow) | 10 |
| VIP Head | 10 |
| Port Stateroom | 10 |
| Starboard Stateroom | 11 |
| Guest Head | 11 |
| Flybridge | 11 |
| Engine Room | 12 |
| Исключения | 12 |
| Отказ от ответственности | 12 |
| ФОТОГРАФИИ | 14 |

| | |
|-----------------------|----|
| КОНТАКТЫ | 20 |
| Контактная информация | 20 |
| Телефоны | 20 |
| Время работы | 20 |
| Адрес | 20 |

ХАРАКТЕРИСТИКИ

Основная информация

| | |
|--------------------------|-----------------------------|
| Тип судна: Моторная яхта | Модельный год: 2015 |
| Год постройки: 2014 | Страна: United States |
| Верх: Hardtop | Открытая палуба мостика: Да |

Размеры

| | |
|------------------------------|------------------------|
| Длина общая: 65' 0" (19.81m) | Ширина: 17' 2" (5.23m) |
| Макс. осадка: 5' 1" (1.55m) | |

Скорость, вместимость и масса

| | |
|-------------------------------------|--|
| Крейс. скорость: 27 Kts. (31 MPH) | Макс. скорость: 31 Kts. (36 MPH) |
| Водоизмещение: 80500 Pounds | Чистый вес: 40 Pounds |
| Вместимость воды: 280 Gallons | Вместимость сточного бака: 100 Gallons |
| Объем топливного бака: 1150 Gallons | |

Размещение

| | |
|--------------------------|-------------------------|
| Всего кают: 4 | Всего коек: 6 |
| Спальные места: 8 | Всего ком. состава: 3 |
| Каюты экипажа: 1 | Койки экипажа: 2 |
| Спальных мест экипажа: 2 | Комм. состав экипажа: 1 |

Корпус и палуба

Материал корпуса: Fiberglass

Комплектация корпуса: Deep Vee

Цвет корпуса: Satin Beige

Дизайнер корпуса: Sea Ray

Дизайнер экстерьера: Sea Ray

Дизайнер интерьера: Sea Ray

Информация о двигателе

Двигатели: 2

Производитель: CAT

Модель: C-18

Тип двигателя: Inboard

Тип топлива: Diesel

ПОДРОБНОЕ ОПИСАНИЕ

Vessel Walkthrough

Flawless is 2015 L650 Fly by Sea Ray that is a four stateroom and four head vessel that has been exclusively freshwater kept up until February 2018. Loaded with options sure to please both captains and great for entertaining. Come step aboard this upgraded vessel with a hardtop flybridge, bow & stern thrusters, KVH HD7/Satellite TV, and wine cooler.

Flawless' teak aft deck is perfect for guests with plenty of seating at the high gloss teak table. Lounge the day away on the on the sunpad cushions and the aft deck refrigerator and grill that are just steps away. Moving forward into the salon the upgraded walnut wood blinds and carpets that will stand out. Continuing forward to the galley, keep your favorite wines in the wine cooler. The lower and upper helm is an operator's dream with numerous options including Raymarine Electronics Package, command view, and thermal imaging camera.

The full beam master stateroom has a queen sized berth and perfect for a quiet night of relaxing. Complete with a refrigerator, safe, KVH HD7 Satellite TV, and entertainment system, this owner's retreat is specular. The VIP Stateroom (Bow) has a queen sized berth the port & starboard staterooms each have twin sized berths. Each room has upgraded satellite TV systems. The VIP Stateroom has access to a private head while the port & starboard staterooms share access to the guest head.

Come aboard **Flawless!** She is located in Fort Lauderdale, FL. To visit the slideshow link, type [http:// then CaryJohn.Zenfolio.com/p273666639/slideshow](http://then CaryJohn.Zenfolio.com/p273666639/slideshow) .

Highlights

- Painted Hull - Satin Beige
- Fresh Water Kept
- Kept Under Cover
- Flybridge hardtop, with Sunroof opening, Electric dimmer & Night lighting
- Bow & Stern Thrusters
- Underwater transom lighting
- Teak - Swim platform, steps to aft deck, aft deck, bow seating area, steps to flybridge, and flybridge
- Sunshade - Bow seating
- High gloss teak table - Bow seating
- Audio system - Bow seating
- Stainless steel anchor
- Multi-station joystick docking controls - Aft deck
- High gloss teak table - Aft deck
- Refrigerator - Aft deck

- Grill - Aft deck
- Sunpad cushions - Aft deck
- KVH HD7 Satellite Antenna for True HD Programming - Salon & All Staterooms
- Walnut wood blinds - Interior
- Upgraded Nibanna/Ridge carpets - Interior
- Wine cooler - Galley
- Water purifier system - Galley & Ice makers
- Pantograph door - Lower helm/Galley area
- Raymarine Electronics package - Lower & Upper helms
- Command view - Lower & Upper helms
- Thermal imaging camera - Lower & Upper helms
- Refrigerator - Master Stateroom
- Safe - Master Stateroom
- TV/DVD & Gaming Port - Port & Starboard Staterooms
- Electric Retractable Awning (aft location) - Flybridge
- (2) High Gloss Teak Tables (Port & Aft) - Flybridge
- Sunpad - Flybridge
- Transformer Shore Power ISO Boost - Electrical
- A/C & Heating Upgrade - Salon
- Additional Fuel Capacity to 1150 Gallons
- Oil Changer System - Engine room

Exterior

- Painted Hull - Satin Beige: **UPGRADE**
- Underwater transom lighting: **UPGRADE**
- Teak - Swim platform, steps to aft deck, & bow seating area: **UPGRADE**
- Sunshade - Bow seating: **UPGRADE**
- High gloss teak table - Bow seating: **UPGRADE**
- Audio system - Bow seating: **UPGRADE**
- Stainless steel anchor: **UPGRADE**
- Bow rail, 316, Stainless steel w/welded Stanchions
- (10) Cleats, Thru-Bolted - Stainless steel
- Deck Rails, 316 Stainless steel
- Hull Windows, Smoked Acrylic
- Lights Navigation
- Portlights (Opening)
- Vent System, engine room
- Windshield, Tempered/Tinted Glass w/Electric Opening Window (Starboard)
- (3) Windshield wipers
- Entry to Lazarette (from swim platform)

Lazarette

- A/C (6,000 BTU)
- Vacuflush head
- Mirror
- Portlight, opening
- Sink w/faucet
- Shower
- Storage cabinet
- Towel ring

Aft Deck

- Teak - Steps to aft deck & aft deck: **UPGRADE**
- Multi-station joystick docking controls: **UPGRADE**
- High gloss teak table: **UPGRADE**
- Refrigerator: **UPGRADE**
- Grill: **UPGRADE**
- Sunpad cushions: **UPGRADE**
- Gates, Side Boarding (Port & Starboard)
- Handrails, 316 Stainless Steel
- Seating w/storage

Salon/Galley

- Walnut wood blinds - Interior: **UPGRADE**
- Upgraded Nibanna/Ridge carpets - Interior: **UPGRADE**
- *Salon*
- KVH HD7 Antenna for True HD Programming in Salon: **UPGRADE**
- Walnut Wood Blinds: **UPGRADE**
- End table w/ Solid Surface top
- Entertainment Center
 - Bose Soundbar
 - 50" LED Flatscreen
 - Blu-Ray Player
 - Universal Remote Control
- Wood Flooring
- (2) Ottomans with Movable dual purpose tops & storage below
- Sofas w/Storage below
- Storage cabinets
- *Galley*
- Wine cooler - Galley: **UPGRADE**

- Water purifier system - Galley & Icemakers: **UPGRADE**
- Pantograph door - Lower helm/Galley area: **UPGRADE**
- Refrigerator, under counter
- Freezer w/icemaker
- Three burner stove
- Microwave/convection oven
- Cabinets for storage
- Wood floors
- Curved seating w/Storage below
- Table w/High Gloss Wood surface

Helm / Electronics

- (3) Raymarine GS165 + Auxiliary unit for upper helm: **UPGRADE**
- Raymarine i50 Depth Sounder: **UPGRADE**
- Raymarine Network Cameras: **UPGRADE**
- Thermal Imaging Camera: **UPGRADE**
- Command View: **UPGRADE**
- Autopilot
- Bow & Stern Thruster Controls
- Alarms, High Water - Bilge & Cabin
- Compass
- Instrumentation:
 - (2) 6.3" LCD Display w/Auto dimming & enhanced contrast in Daylight, Graphic presentation of Analogue instruments, Display of alarm status & fuel flow
 - (2) Fuel Gauges
- Dual Stidd Helm Chairs: Lower Helm
- Electronic Shift & Throttle Controls
- Power Steering w/Tilt Wheel
- Wiper Controls
- VHF Radio w/Remote Speaker

Master Stateroom

- KVH HD7 Antenna for True HD Programming: **UPGRADE**
- Refrigerator: **UPGRADE**
- Safe: **UPGRADE**
- Full Beam w/Queen Interspring Mattress
- Cedar Lined Closet
- Dresser (Port & Starboard)
- Entertainment Center
 - Bose Soundbar

- 40" LED Flatscreen
- Blu-Ray Player
- Universal Remote Control
- (2) Nightstands/Portlight, opening
- Vanity, pull out w/removable seat

Master Head

- Private access from Master Stateroom
- His & Her Sinks
- Vanity
- Tile flooring
- Vacuflush head
- Portlight, opening
- Shower w/seat, Adjustable Shower wand, rain shower & Acrylic door
- Medicine cabinet w/storage

VIP Stateroom (Bow)

- Satellite TV: **UPGRADE**
- Queen sized bed w/Interspring mattress, pillows, sheets, coordinated spread & storage
- Door w/access to Dedicated Head/Shower
- Entertainment Center
 - Bose Soundbar
 - 32" LED TV
 - Blu-Ray Player
- Cedar lined hanging locker
- Skylight
- Drawers for storage

VIP Head

- Vanity
- Tile flooring
- Vacuflush head
- Portlight, opening
- Shower w/seat, Adjustable Shower wand, rain shower & Acrylic door
- Medicine cabinet w/storage

Port Stateroom

- TV & Gaming Port: **UPGRADE**
- Satellite TV: **UPGRADE**
- (2) Twin Beds w/Pillows, Sheets, Coordinated Spreads, & Storage
- Carpeting
- Cedar lined hanging locker
- Storage Cabinet
- Storage Shelf
- LED TV w/Blu-Ray Player

Starboard Stateroom

- TV & Gaming Port: **UPGRADE**
- Satellite TV: **UPGRADE**
- (2) Twin Beds w/Pillows, Sheets, Coordinated Spreads, & Storage
- Carpeting
- Cedar lined hanging locker
- Storage Cabinet
- Storage Shelf
- LED TV w/Blu-Ray Player

Guest Head

- Vanity
- Tile flooring
- Vacuflush head
- Portlight, opening
- Shower w/seat, Adjustable Shower wand, rain shower & Acrylic door
- Medicine cabinet w/storage

Flybridge

- Electric Retractable Awning (aft location): **UPGRADE**
- (2) High Gloss Teak Tables (Port & Aft): **UPGRADE**
- Sunpad: **UPGRADE**
- Seating - Forward w/opposing storage
- Seating - Aft in U-shape w/opposing storage
- Beverage holders
- Stereo
 - AM/FM
 - Bluetooth Connectivity
 - Sirius Satellite Receiver

- Ipod Interface
- MP3 Port
- (2) Speakers
- Digital Cockpit Remote Control
- Wet Bar
 - Sink
 - Faucet
 - Solid surface counter top
 - Refridgerator
 - Grill
 - Stainless Steel Handrail
 - Trash Receptacle

Engine Room

- T-CAT C18 1150Hp (320 & 318 Hours - Port & Starboard as of 6/18)
- Onan 29kW Diesel Generator (360 Hours - Port & Starboard as of 9/17): **UPGRADE**
- A/C and Heating: **UPGRADE**
- Additional Fuel Capacity to 1150 Gallons: **UPGRADE**
- Thermal Imaging Camera: **UPGRADE**
- Transformer ISO Boost: **UPGRADE**
- Bow & Stern Thrusters
- Bilge pumps 24V Automatic Highwater (1 Bilge, 1 Cabin)
- Fire suppression system - Automatic w/Diesel Shutdown, Override & Manual Pull
- Insulation, Engine room - 2" w. Loaded Vinyl barrier
- Diesel fuel system - Electric w/Transfer pump
- Seacocks on all underwater fittings
- Hydraulic trim tabs
- Water heater, 240V, (20 gallon)
- Water Purifier System (Galley & Ice makers)

Исключения

При продаже яхты исключаются личные вещи владельца.

Отказ от ответственности

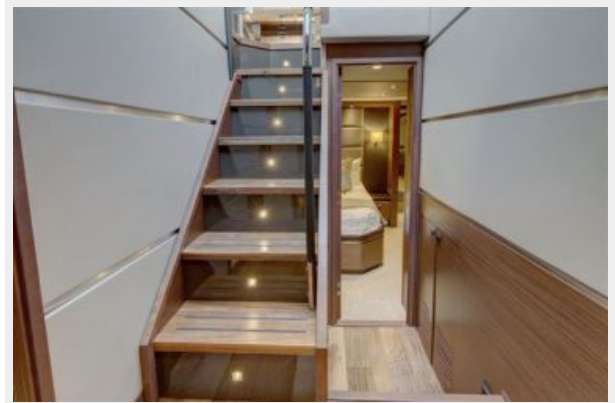
Компания предоставляет описание судна или яхты добросовестно, но не может гарантировать точность этой информации, а также не ручается за техническое состояние. Покупатель должен проинструктировать своих агентов или оценщиков исследовать представленную информацию более подробно, по собственному желанию. Продажа судна или яхты, изменение цены или снятие с продажи будет происходить без

предварительного уведомления.

ФОТОГРАФИИ













КОНТАКТЫ

Андрей Шестаков (Andrey Shestakov) – ведущий яхтенный брокер отдела продаж яхт и судов компании Shestakov Yacht Sales Inc. Официальный представитель Shestakov Yacht Sales Inc. для русскоговорящих клиентов в центральном офисе компании в Майами/Форт Лодердейл/Флорида/США.

Контактная информация

Email: andrey@shestakovyachtsales.com

Web: shestakovyachtsales.com

Телефоны

Краснодарский край: **+7(918)465-66-44**

США, Майами, Флорида: **+1(954)274-4435**

Время работы

Понедельник – Суббота: **9:00 - 21:00**
EDT

Воскресенье: **Закрето**

Адрес



Harbour Towne Marina, 850 NE 3rd St,
STE 213, Dania, FL 33004