

OFF SEASON — CABO



Builder: CABO

Year Built: 2005

Model: Sport Fisherman

Price: PRICE ON APPLICATION

Location: United States

LOA: 40' 0" (12.19m)

Beam: 15' 9" (4.80m)

Min Draft: 3' 6" (1.07m)

Cruise Speed: 27 Kts. (31 MPH)

Max Speed: 34 Kts. (39 MPH)

Our experienced yacht broker, Andrey Shestakov, will help you choose and buy a yacht that best suits your needs **Off Season — CABO** from our catalogue. Presently, at Shestakov Yacht Sales Inc., we have a wide variety of yachts available on our sale's list. We also work in close contact with all the big yacht manufacturers from all over the world.

If you would like to buy a yacht **Off Season — CABO** or would like help answering any questions concerning purchasing, selling or chartering a yacht, please call **+1(954)274-4435**

TABLE OF CONTENTS

TABLE OF CONTENTS	2
SPECIFICATIONS	3
Overview	3
Basic Information	3
Dimensions	3
Speed, Capacities and Weight	3
Accommodations	4
Hull and Deck Information	4
Engine Information	4
DETAILED INFORMATION	5
Walkthrough	5
Accommodations	5
Galley	5
Electrical	5
Electronics	6
Head	6
Deck	6
Mechanical	7
Mechanical Disclaimer	8
Exclusions	8
Disclaimer	8
PHOTOS	9
CONTACTS	26
Contact details	26
Telephones	26
Office hours	26
Address	26

SPECIFICATIONS

Overview

2005 40' Cabo Express powered by twin 800hp Man Diesel Engines that gives you an easy cruise of 27 knots burning approx: 50 GPH. "Off Season" also offers a great cockpit laid out for the serious fisherman. Some of the features include Bait Freezer, 2 In-Deck Fish Boxes, Transom Live Well, Air Conditioned Helm Deck and much more. Call for full specs and details.

Basic Information

Category: Sport Fisherman

Sub Category: Express

Model Year: 2005

Year Built: 2005

Country: United States

Dimensions

LOA: 40' 0" (12.19m)

Beam: 15' 9" (4.80m)

Min Draft: 3' 6" (1.07m)

Speed, Capacities and Weight

Cruise Speed: 27 Kts. (31 MPH)

Cruise Speed RPM: 1900 Kts.

Max Speed: 34 Kts. (39 MPH)

Max Speed RPM: 2350 Kts.

Displacement: 28000 Pounds

Water Capacity: 65 Gallons

Holding Tank: 10 Gallons

Fuel Capacity: 580 Gallons

Accommodations

Total Cabins: 1

Total Berths: 1

Total Heads: 1

Hull and Deck Information

Hull Material: Fiberglass

Engine Information

Engines: 2

Manufacturer: MAN

Model: R6-800

Engine Type: Inboard

Fuel Type: Diesel

DETAILED INFORMATION

Walkthrough

The 40' Cabo is a large express that offer the owner and crew a great fishing platform as well as great accommodations for the occasional overnight trip / cruise. Stepping into her cockpit you will get the feeling right away as to her size. With features like 2 in-deck fish boxes, Live Well, Teak Rocket Launcher, Bait Freezer you can see why the Cabo is a great choice for fishermen. Going onto the air conditioned helm deck you will find on the Port Side the L-Shape seating aft and two large Stidd Helm Chairs along with a tackle cabinet on the starboard side.

Opening up the cabin door you will see the well thought out salon area. Starboard side L-Shaped Sofa / Dinette Seating with ample storage above and below. Looking to Port is her Galley with the Enclosed Head just aft. Going froward from the galley area is the Stateroom with the center line Queen Berth with Port and Starboard Cedar Lined Hanging Lockers and plenty of storage cabinets above the berth as well.

Accommodations

- Forward Stateroom w/ Center Line Queen Bed
- Galley to Port
- Enclosed Head w/ Separate Enclosed Shower
- Starboard L-Shaped Sofa / Dinette Seating
- Teak Dinette Table

Galley

- Nova Cool Side by Side Refrigerator / Freezer
- Kenyon Euro Ceramic Cook Top
- Panasonic Microwave / Convection Oven
- Solid Surface Counters
- Molded in Corian Sink w/ Hot and Cold Water Available
- Storage Cabinets above and below Counters
- Mirrored Back Splash

Electrical

- Phasor 12kw Generator (150 hours)
- 110v / 120v Electrical System

- **(6) Battery**
- **Battery Selector Switches**
- **50 Amp Shore Power**
- **Retractable Shore Power Cord**
- **Battery Parallel Switch**
- **Vanner 60amp Battery Charger**
- **Newmar Phase III Battery Charger**
- **Molded in Aft Facing Spreader Lights**
- **Galvanic Isolator**
- **Multi Color Overhead Lights Helm Deck and Tower**
- **Cockpit Courtesy Lights under Gunnel**

Electronics

Lower Station

- **Garmin 7215 GPS / Plotter / Sounder**
- **Furuno NavNet VX2**
- **Furuno Open Array 48nm Radar**
- **Furuno RD-30**
- **Simrad AP26 Autopilot**
- **Standard Horizon VHF Radio**
- **Ritchie Compass**
- **Fusion Stereo System**

Tower

- **Furuno NavNet VX2 Repeater**
- **Garmin Echo Map 70**
- **Simrad AP26 Autopilot**
- **Standard Horizon VHF Radio**

Head

- **Located Salon Port Side Aft**
- **Separate Enclosed Shower**
- **Vacu-Flush Head System**
- **Tank Watch Level Monitoring System**
- **DockSide Holding Tank Pump Out**

Deck

- **Tower w/ Full Controls**
- **Fiberglass Hard Top on Tower**
- **Bench Seat w/ Foot Rest in Tower**
- **Fresh Water Spigot in Tower**
- **Fiberglass Hard Top Helm Deck**
- **Underside of Hard Top Painted to Match Hull Sides**
- **Full Enclosure**
- **Helm Deck Reverse Cycle Heating and Air Conditioning**
- **Helm Deck L-Shaped Seating Port Side**
- **Helm Deck Tackle Storage Cabinet Starboard Side**
- **(2) Stidd Helm Chair**
- **Powder Coated Windshield Frame**
- **Bow Rail**
- **Anchor Pulpit**
- **Lewmar Anchor Windlass**
- **Aft Cockpit Mooring / Sun Shade Cover**
- **(2) 4 Rod Rocket Launcher on Tower Leg**
- **Port Side Forward Cockpit Bait Freezer**
- **Port Side Forward Cockpit Tackle Station**
- **Starboard Side Forward Cockpit Refrigerated Drink Box**
- **2 In-Deck Fish Boxes (1 has Freezer Plate)**
- **Cockpit Coaming Pads**
- **Port and Starboard Cockpit Under Gunnel Storage Boxes**
- **Transom Door**
- **5 Flush Mounted Rod Holders in Covering Boards**
- **Transom Live Well**
- **Teak Rocket Launcher**
- **Rupp Double Spreader Out Riggers**
- **Center Rigger**
- **2 Cameras (1 in Engine Room / 1 on Hard Top Facing Cockpit)**
- **Cockpit Corner Hawse Pipe**
- **Spring Line Cleats**
- **Raw Water Wash Down**
- **Fresh Water Wash Down**
- **Dock Side Water Inlet**

Mechanical

- **Bow Thruster**
- **Hydraulic Steering**
- **Hydraulic Engine Hatch Assist**
- **Raritan Small Ice Maker Helm Deck under Companion Helm Chair**
- **(3) Windshield Wiper w/ Fresh Water Available**

- **Dripless Shaft Logs**
- **Engine Synchronizer**
- **Reverso Oil Changing System (engines and gen set)**
- **2 1/2" Shafts**
- **(3) Bilge Pumps**
- **(3) High Water Bilge Alarm**
- **Engine Driven Emergency Crash Pump**
- **Racor Fuel Filters**
- **Rexroth Electronic Engine Controls w/ Emergency Back Ups**
- **Trolling Valves**
- **(2) Generator Remote Start**
- **Sea Fire Engine Room Fire Extinguish System**
- **Revere 6 Person Life Raft**

Mechanical Disclaimer

Engine hours are as of the date of the original listing and are a representation of what the listing broker is told by the owner and/or actual reading of the engine hour meters. The broker cannot guarantee the true hours. It is the responsibility of the purchaser and/or his agent to verify engine hours, warranties implied or otherwise and major overhauls as well as all other representations noted on the listing brochure.

Exclusions

Owner's personal belongings.

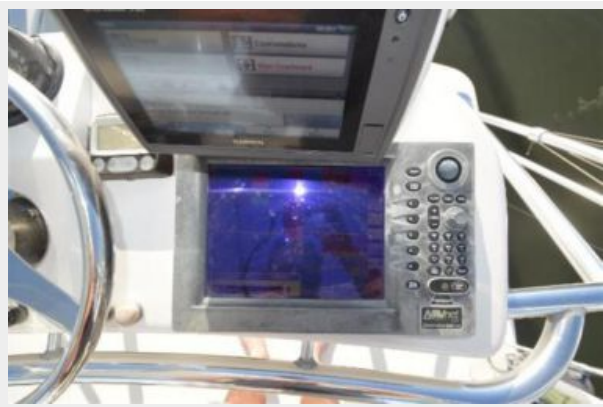
Disclaimer

The Company offers the details of this vessel or yacht in good faith but cannot guarantee or warrant the accuracy of this information nor warrant the condition of the vessel. A buyer should instruct his representatives, agents, or his surveyors, to investigate such details as the buyer desires validated. This vessel or yacht is offered subject to prior sale, price change, or withdrawal without notice.

PHOTOS













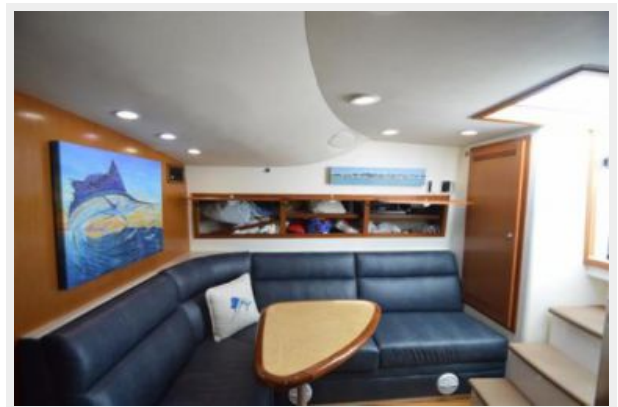


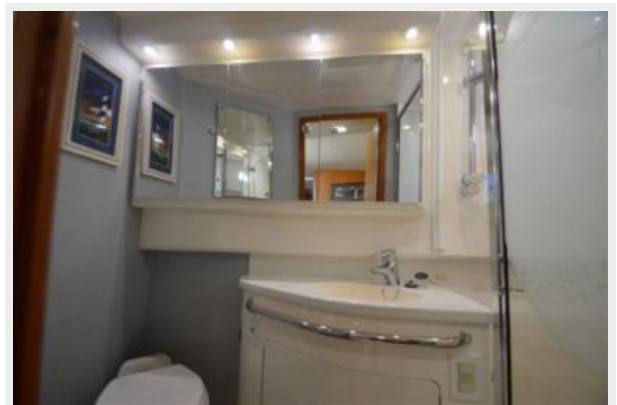
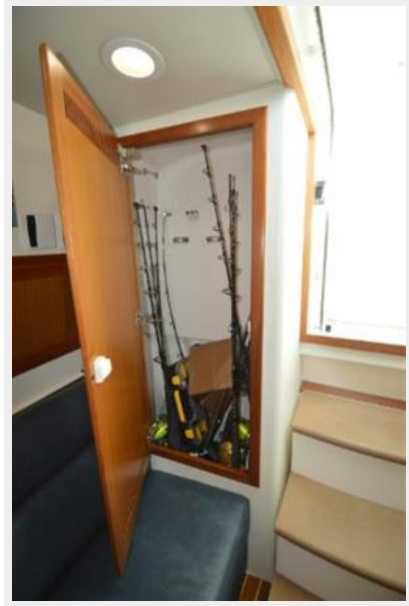






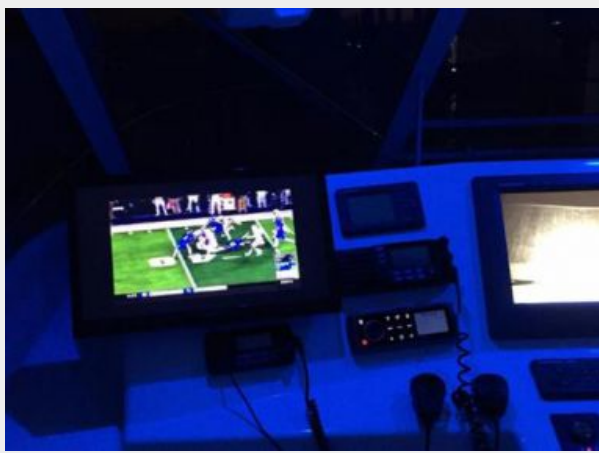


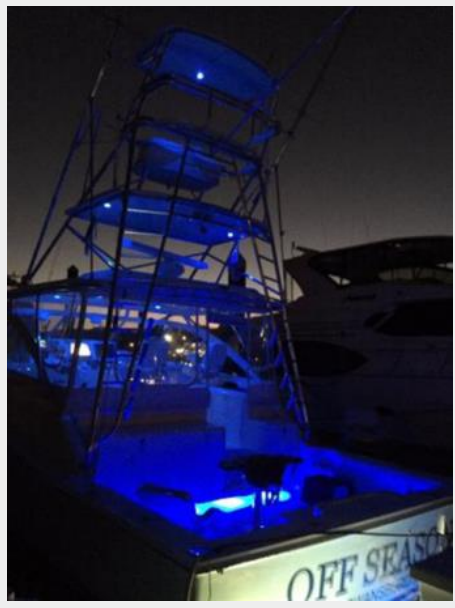












CONTACTS

Andrey Shestakov, leading yacht broker of the sales department of Shestakov Yacht Sales Inc. Shestakov Yacht Sales Inc., the official representative of the Miami/Fort Lauderdale FL headquarters.

Contact details

Email: andrey@shestakovyachtsales.com

Web: shestakovyachtsales.com/en/

Telephones

USA: +1(954)274-4435

Office hours

Monday – Saturday: **9:00 - 21:00** EDT

Sunday: **closed**

Address



Harbour Towne Marina, 850 NE 3rd St,
STE 213, Dania, FL 33004