

46FT 2008 BENETEAU OCEANIS 46 — BENETEAU



Builder: BENETEAU

LOA: 46' 0" (14.02m)

Year Built: 2008

Beam: 13' 9" (4.19m)

Model: Cruising Sailboat

Price: PRICE ON APPLICATION

Location: United States

Our experienced yacht broker, Andrey Shestakov, will help you choose and buy a yacht that best suits your needs 46ft 2008 Beneteau Oceanis 46 — BENETEAU from our catalogue. Presently, at Shestakov Yacht Sales Inc., we have a wide variety of yachts available on our sale's list. We also work in close contact with all the big yacht manufacturers from all over the world.

If you would like to buy a yacht 46ft 2008 Beneteau Oceanis 46 — BENETEAU or would like help answering any questions concerning purchasing, selling or chartering a yacht, please call +1(954)274-4435

TABLE OF CONTENTS

TABLE OF CONTENTS	2
SPECIFICATIONS	3
Overview	3
Basic Information	3
Dimensions	3
Speed, Capacities and Weight	4
Accommodations	4
Hull and Deck Information	4
Engine Information	4
PHOTOS	5
CONTACTS	15
Contact details	15
Telephones	15
Office hours	15
Address	15

SPECIFICATIONS

Overview

This two-cabin 2008 Beneteau 46 is in excellent condition, and owned by a knowledgeable sailor who has many upgrades in the last 2yrs for the boat. She has been meticulously maintained, never chartered, and has lots of cruiser-desired additions. She is extremely well equipped with all the options an experienced sailor would consider essential including a 75 horsepower Yanmar in lieu of the standard 54 hp engine, An electric Lewmar port side winch, a bow thruster, Raymarine ST60 sailing instruments and E120 Radar/Plotter with AIS and Sirius weather, additional 19 gal fuel tank w/Groco GPBR-1 Transfer pump, and a 3 blade Flex-o-fold three blade prop. Her sail inventory includes Doyle Four in mast furling with a vertically battened mainsail and a Doyle Tri-Radial 140 roller furling Genoa.

The simplicity of the deck design and sailing systems becomes apparent as soon as you enter the cockpit. A full canvas enclosure provides complete protection from the elements. All the sail control lines are led aft, under a deck cover, to the cockpit.

The cockpit of features twin wheels, a design concept sailors have come to appreciate from Beneteau. A large, molded table incorporates a chart plotter that is highly visible from either wheel. An advantage of the twin wheels becomes apparent when tacking. The helmsman can throw off the sheet from the low side wheel as he comes about, shift to the other wheel and haul in the sheet. It's an easy one-man job and it feels natural.

She is attractively priced at \$239,900 so call today for a boarding appointment; you'll be pleasantly surprised by the exceptional condition and equipment on board. DYSID:3073884

Basic Information

Category: Cruising Sailboat

Sub Category: Cruising Sailboat

Model Year: 2008

Year Built: 2008

Country: United States

Dimensions

LOA: 46' 0" (14.02m)

LWL: 40' 0" (12.19m)

Beam: 13' 9" (4.19m)

MFG Length: 47' 2" (14.38m)

Speed, Capacities and Weight

Displacement: 23291 Pounds

Water Capacity: 140 Gallons

Fuel Capacity: 72 Gallons

Accommodations

Total Cabins: 2

Total Berths: 4

Total Heads: 2

Hull and Deck Information

Hull Material: Fiberglass

Hull Configuration: Monohull

Engine Information

Engines: 2

Manufacturer: Yanmar

Model: 4JH4-TE

Engine Type: Inboard

Fuel Type: Diesel

PHOTOS

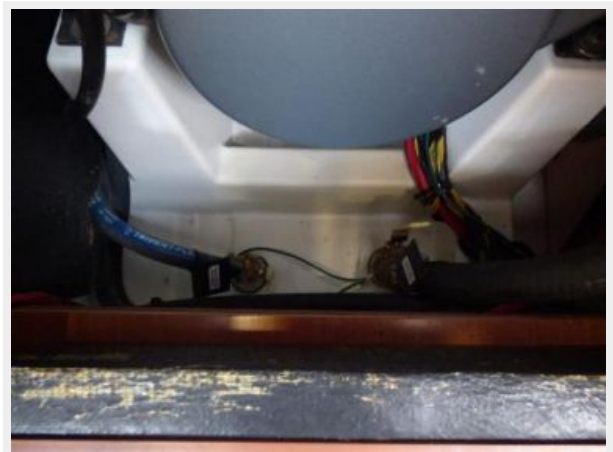






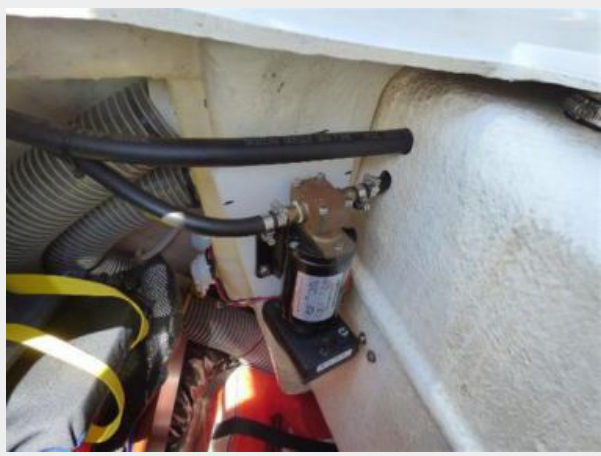














CONTACTS

Andrey Shestakov, leading yacht broker of the sales department of Shestakov Yacht Sales Inc. Shestakov Yacht Sales Inc., the official representative of the Miami/Fort Lauderdale FL headquarters.

Contact details

Email: andrey@shestakovyachtsales.com

Web: shestakovyachtsales.com/en/

Telephones

USA: +1(954)274-4435

Office hours

Monday – Saturday: **9:00 - 21:00** EDT

Sunday: **closed**

Address



Harbour Towne Marina, 850 NE 3rd St,
STE 213, Dania, FL 33004