

THE PEARL — MISTRAL COMPOSITE



Builder: MISTRAL COMPOSITE

LOA: 80' 5" (24.50m)

Year Built: 1996

Model: Cruising Sailboat

Price: PRICE ON APPLICATION

Location: New Zealand

Our experienced yacht broker, Andrey Shestakov, will help you choose and buy a yacht that best suits your needs **THE PEARL — MISTRAL COMPOSITE** from our catalogue. Presently, at Shestakov Yacht Sales Inc., we have a wide variety of yachts available on our sale's list. We also work in close contact with all the big yacht manufacturers from all over the world.

If you would like to buy a yacht **THE PEARL — MISTRAL COMPOSITE** or would like help answering any questions concerning purchasing, selling or chartering a yacht, please call **+1(954)274-4435**

TABLE OF CONTENTS

TABLE OF CONTENTS	2
SPECIFICATIONS	3
Overview	3
Basic Information	7
Dimensions	8
Accommodations	8
Hull and Deck Information	8
Engine Information	8
PHOTOS	9
CONTACTS	12
Contact details	12
Telephones	12
Office hours	12
Address	12

SPECIFICATIONS

Overview

Very nice performance cruising sloop designed by Bruce Farr for long distance crossings. The boat was converted from racing into cruising with simple yet comfortable accommodation, keeping maximum space and light inside. She is ideal for going around the world. The current owners, a young couple in their 40s, have sailed her on their own from France to New Zealand with their 10 year old daughter. She is easy and not demanding in maintenance, and the perfect sailing yacht to sail shorthanded.

Classification : Pleasure Yacht

Construction :

***hull** : Kevlar / epoxy with Carbon reinforcements

***superstructure** : Kevlar / epoxy with Carbon reinforcements

***deck** : Kevlar / epoxy with Carbon reinforcements

Colour *hull : Grey (New 2015)

***superstructure** : Grey (New 2015)

***deck** : Grey (New 2015)

Cabins : 3

Length overall : 24.50 m

Maximum beam : 6.20 m

Draft : 4.20 m

Displacement : 28.00 tonnes

Keel : Lead bulb with fin keel

Spars : Carbon mast and boom

New mast head from Formula France (2010)

Standing rigging : Rod rigging for shrouds and stays – Serviced 2015

Kevlar for the runners and backstay – Serviced 2015

Running rigging : Spectra (2012)

Furlers : Facnor furlers

Sails :

Mainsail

Genoa

Jib

Spinnaker A3

All sails new 2010/2012 (except A3) and serviced 2016 / 2017

Sail area *upwind : m²

***downwind**: m²

Deck hardware : Lewmar, all deck hardware serviced 2016

Windlass : Lofrans Project X4 / 2,500W (2012)

Bow Thruster : Lewmar retractable bow thruster (2016)

Engine : 130 HP VOLVO PENTA - Maxprop 3 blades 23”

Generator No. 1: 20 HP VOLVO PENTA with 2 belted alternators and

1 belted water maker high pressure

No. 2: KHOLER 5 KVA / 230V / 50 Hz (2016)

Batteries Separate battery sets for house, engine and generators –

All new Nov 2016

2,200 A House batteries (Nov-2016)

Fuel : 1,000 L in 4 storage tanks + 1 daily tank

Fresh Water Ballast : Fresh Water Ballast on each tack (2x500L)

Water maker : Aqua base 250 l/h – New membranes 2016

Heater : Webasto Hydronic central heating system with convectors,
booster fans and towel dryer

Electronic *instruments : Simrad electronics (2015)

1x DST 200 Depth / Speed / Temperature

1x Wind 508 mast head unit

1x NAIS 400

1x SSB Icom ICM710

1x Pactor SSB modem

***sounder** : 1x EQ33 Graphic sounder stand alone)

***self steering** : 1x Autopilot control AP50; 2x Autopilot power unit

***gyrocompass** : 1x RC42 Flux Compass; 1x Satellite compass HS50

***screens** : 6x IS40 displays + 1 spare

***VHF radio** : 2x RS90 DSC VHF; 2x Hand held VHF

***GPS** : 1x GS25 GPS

***chart plotter** : 2x NSE12 chart plotter

DECK AND COCKPIT

Lalizas Easystore 150 (x4), Easystore 100 (4)

Square line diam 25mm, 50m (x2), 25m (x4)

Carbon / Epoxy sliding dodger (2016)

8mm solid teak lining (2016)

ACCOMMODATION

3 cabins

SAFETY AND SECURITY

1x McMurdo EPIRB

2x 6 pers liferafts

3x Personal AIS Beacon

6x Self inflatable safety harness

MOORING

Main: 125m of 14mm chain + 50 Kg Lewmar anchor

Spare: 25m of 14mm chain + 100m 25mm rope + 50Kg Bruce anchor

TENDERS AND TOYS

Composite OC tender custom 345 (New 2016)

20 HP Yamaha 4 stroke (2010)

MISCELLANEOUS EQUIPMENT

2x Main winch

2x Mast foot winch

1x Each block type

1x Coffee grinder + all gearbox / shafts

1x Propeller

1x Water maker HP pump

1x Hydronic heater

2x Alternators (12 + 24)

1x Inverter/ Charger

REFIT

Recent upgrades include:

- Antifouling: Jotun Seaforce Black – Paint spec for 60 months (New July 2015)
- Installation of fixed backstay,
- Genoa furler
- Staysail on soft stay / furler
- Modified deck layout for shorthand sailing (2 crew)
- 2x3m Aft swinging Swim platform / carbon light weight ladder
- Huge lazaret / storage – Up to 5 SUP / Kayak / Windsurf boards
- Sail storage
- Anchor davit & chain locker
- Accommodation
 - Master cabin with head / toilet
 - 2x single cabins with common head / toilet
 - 1x workshop

1x laundry with 7Kg washing machine + 7Kg Dryer

Basic Information

Category: Cruising Sailboat

Sub Category: Motorsailor

Model Year: 1996

Year Built: 1996

Country: New Zealand

Dimensions

LOA: 80' 5" (24.50m)

Accommodations

Total Cabins: 3

Hull and Deck Information

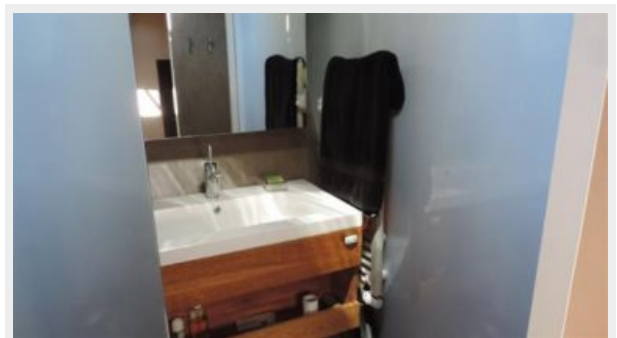
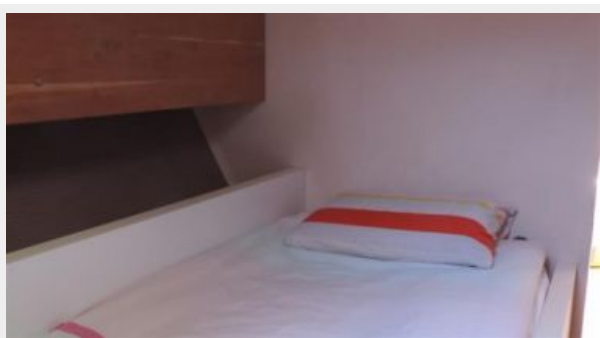
Hull Material: Kevlar Composite

Engine Information

Manufacturer: Volvo Penta

PHOTOS







CONTACTS

Andrey Shestakov, leading yacht broker of the sales department of Shestakov Yacht Sales Inc. Shestakov Yacht Sales Inc., the official representative of the Miami/Fort Lauderdale FL headquarters.

Contact details

Email: andrey@shestakovyachtsales.com

Web: shestakovyachtsales.com/en/

Telephones

USA: +1(954)274-4435

Office hours

Monday – Saturday: **9:00 - 21:00** EDT

Sunday: **closed**

Address



Harbour Towne Marina, 850 NE 3rd St,
STE 213, Dania, FL 33004