

## NO NAME — SEA RAY



**Builder:** SEA RAY

**Year Built:** 2011

**Model:** Cruising Yacht

**Price:** PRICE ON APPLICATION

**Location:** United States

**LOA:** 35' 0" (10.67m)

**Beam:** 11' 6" (3.51m)

**Min Draft:** 2' 11" (0.89m)

**Max Draft:** 3' 7" (1.09m)

Our experienced yacht broker, Andrey Shestakov, will help you choose and buy a yacht that best suits your needs **No Name — SEA RAY** from our catalogue. Presently, at Shestakov Yacht Sales Inc., we have a wide variety of yachts available on our sale's list. We also work in close contact with all the big yacht manufacturers from all over the world.

If you would like to buy a yacht **No Name — SEA RAY** or would like help answering any questions concerning purchasing, selling or chartering a yacht, please call **+1(954)274-4435**

---

# TABLE OF CONTENTS

---

TABLE OF CONTENTS	2
SPECIFICATIONS	3
Overview	3
Basic Information	3
Dimensions	3
Speed, Capacities and Weight	4
Accommodations	4
Hull and Deck Information	4
Engine Information	4
DETAILED INFORMATION	5
Key Features & Upgrades	5
Exclusions	7
Disclaimer	7
PHOTOS	8
CONTACTS	14
Contact details	14
Telephones	14
Office hours	14
Address	14

---

# SPECIFICATIONS

---

## Overview

---

**\*\*\*\*\*PRICE REDUCED FOR QUICK SALE\*\*\*\*\***

**2011 Sea Ray Sundancer -- Low Hour Vessel in Immaculate Condition -- All Maintenance Up to Date, Turn Key Boat from Bow to Stern**

**Loaded with Upgrades Including: Bow + Stern Thrusters, Inboard V-Drive Mercruisers (370HP/ea), Generator, Air Conditioning, Cockpit Grill + Refrigerator, Hardwood Floors in Cabin & Much More!!!**

**\*\*\*\*\*Serviced, Detailed & Bottom Painted in the Last 30 Days\*\*\*\*\***

**SMALLER, LOW HOUR TRADES WILL BE CONSIDERED**

---

## Basic Information

---

**Category:** Cruising Yacht

**Sub Category:** Express

**Model Year:** 2011

**Year Built:** 2011

**Country:** United States

**Cockpit:** Yes

---

## Dimensions

---

**LOA:** 35' 0" (10.67m)

**Beam:** 11' 6" (3.51m)

**Min Draft:** 2' 11" (0.89m)

**Max Draft:** 3' 7" (1.09m)

---

## Speed, Capacities and Weight

---

**Displacement:** 15400 Pounds

**Water Capacity:** 40 Gallons

**Holding Tank:** 28 Gallons

**Fuel Capacity:** 225 Gallons

---

## Accommodations

---

**Total Cabins:** 2

**Total Heads:** 1

---

## Hull and Deck Information

---

**Hull Material:** Fiberglass

**Hull Color:** White

---

## Engine Information

---

**Engines:** 2

**Manufacturer:** Mercruiser

**Model:** 8.2 Horizon

**Engine Type:** Inboard

**Fuel Type:** Gas

---

# DETAILED INFORMATION

---

## Key Features & Upgrades

---

### AIR CONDITIONING / HEATING

Custom Integral Vent System

Reverse Cycle System: (12,000 BTU)

CABIN FEATURES Carbon Monoxide Monitor Flooring, Hardwood - Maple Lighting, 12V Outlet, Phone Outlets, 120V GFI Protected Shades, Pleated Stereo, Sony Storage, In-Floor Wood Interior Package Cherry or Maple Wood-Finish Cabinets

CANVAS (SUNBRELLA) Aft Curtain Aft Sunshade Canvas Storage Bag Front Curtains Side Curtains

CERTIFICATIONS Meets Applicable USCG & ABYC Standards Mercury Installation Quality Certification NMMA Certification

COCKPIT FEATURES Beverage Holders (10) Carpet Liner, Snap-In Cooler, Carry-On: w/Designated Storage Door, Cabin Entry (Sliding & Lockable): Fiberglass w/Integral Steps Door, Transom Floor Liner, Fiberglass Hatch, Engine Room Lighting, Indirect Outlet, 120V GFI Protected Outlet, 12V Accessory Seating, Aft Bench w/Built-In Table Storage & Fiberglass Storage Base Seating, Aft-Facing w/Molded Fiberglass Storage Base Seating, Bucket Seating, Helm Bench w/Dual Flip-Up Thigh-Rise Bolsters, Adjustable Captain's Seat & Fiberglass Storage Base Sport Spoiler, Molded Fiberglass (Seamless) Steps, Boarding Storage, Side Panel Table, Cockpit Solid Teak w/Dedicated Storage & Sun Pad Filler Cushions Wet Bar

CONTROL STATION Alarms, High-Water: Bilge & Cabin Compass Emergency Start System Horn Instrument Panel SmartCraft Diagnostics SmartCraft Digital Throttle & Shift (DTS) w/Trim Switch Steering Wheel, Wood-Accent Steering, Power Assisted w/Leather Wrapped Isotta Tilt Wheel Switch Pads Tilt & Trim, Power

ELECTRICAL SYSTEMS Battery Charger/Converter 120V/60 Cycle Battery Switches (2) Battery Trays Breaker Panels, Waterproof Isolator, Galvanic Mercathode II Panel, DC Main Breaker Panel, Main Distribution - AC Panel, Main Distribution - DC Shore Power, Dual 30 Amp/120V/60 Cycle TV/Phone Inlet Wiring, Color-Coded

ELECTRONICS Electronics Circuit, 30 Amp VHF Radio

ENGINE ROOM Bilge Pump, 12V Automatic Bilge Pumps, 12V: Automatic High-Water (1 Bilge, 1 Cabin) Blowers, 12V Bilge (2) Fire Suppression System Gel-Coated Engine Room (Pearl) Insulation, Engine Room - 2" Lighting, 12V Oil Filters - Remote Underwater Exhaust System: Patented (V-Drives Only)

---

**FUEL SYSTEM Fuel Lines (USCG - Type A-1) Fuel Tanks, Aluminum**

**GALLEY** Countertop, Solid Surface Handrail, Stainless Steel Lighting, 12V Microwave 120V/60 Cycle Outlet, 12V Accessory Power Vent, 12V Refrigerator, Drawer 12V Refrigerator, Dual-Voltage Storage, Drawers Storage, Upper & Lower Stove, Two Burner (Recessed) Trash Receptacle

**HEAD** Flooring, Simulated Teak Handrail, Stainless Steel Head (VacuFlush) Head, Enclosed Mirror, Head Door Mirror, Head Wall Power Vent, 12V Shower Wand Storage, Medicine Cabinet Storage, Upper Shelves Vanity

**HULL & DECK FEATURES** Bottom Paint Bow & Stern Eyes, Stainless Steel Bow Rail, Stainless Steel Cleats, Custom Sea Ray 10" (8) Deck Fill Plates Drain Plugs, Brass-Threaded Gel Coat, Arctic White Graphics, Striping Handrails, Stainless Steel Handrails, Stainless Steel Handrails, Stainless Steel Hatch, Deck Vent Hull Windows, Opening Light, Stern Lights, Navigation: Stainless Steel Resin, High-Performance Vinylester Rub Rail, PVC w/Stainless Steel Insert Seating, Foldaway Skylights (2) Thru-Hull Fittings Stainless Steel Toe Rail: Molded Fiberglass - Deck Vent System, Engine Room Windshield Wipers Windshield, Tempered/Tinted Curved Glass

**MID-STATEROOM** Curtain, Privacy (Hideaway) Mirrored Bulkhead Seating, Ultraleather HP Conversation Pit Storage, Drawer Storage, Upper & Lower

**SALON/DINETTE** Lighting, 12V Sofa Storage, Gunwale Cabinets Table, Dinette TV, Flatscreen w/Remote DVD Player

**UNDERWATER GEAR** Bonding System w/Zinc Hull Plate (V-Drives Only) Propeller Shafts, 1 1/2" Stainless Steel (2) - Aquamet 19 (V-Drives Only) Propellers, Nibral 3-Blade (V-Drives Only) Propellers, Stainless Steel (Sterndrives Only) Rudders, Manganese-Bronze Seacocks Engines (V-Drives Only) Seawater Strainers Engines (V-Drives Only) Shaft Logs, Dripless w/Extra Seal Carrier Kit (V-Drives Only) Struts, Manganese-Bronze (V-Drives Only) Trim Tabs, Hydraulic (Integrated w/Zeus System) V-BERTH Berth, Double (Island Style) Curtain, Privacy (Hideaway) Sheet Set, Fitted: (Neutral Color) Storage Cabinet Storage, Gunwale Cabinets Storage, Hanging Locker

**WASTE SYSTEMS** Head System, VacuFlush Holding Tank (28-Gallon) Holding Tank Level Indicator Sump Box

**WATER SYSTEM** Freshwater Washdown Spigot Pressure Water System w/12V Pump Shower, Cockpit Water Heater, (6 Gallon) Water Inlet, Dockside Water Manifold System Water Tank (40-Gallon)

**WINDLASS SYSTEM** \*Recessed Anchor Chute: Stainless Steel Anchor Rope/Chain Storage Anchor, Galvanized Windlass, Rope/Chain: w/Foot Switches

## OPTIONAL EQUIPMENT

Chartplotter/GPS - Raymarine C90W (9" Color Widescreen LCD) SmartCraft VesselView Display Propulsion - Engine Hour Meters, Engine Status, Performance and Fuel, Peak Performance, Boost Pressure (optional), Troll Control, Cruise Control Vessel- Vessel Status, Tank Status, Steering Position Active Alarms/Details

5.0 kW Kohler Low Emission - Gas: 120V/60 Cycle

INDIVIDUAL OPTIONS Anchor Washdown System Bow Rail, Split Grill, Cockpit: Built-In (120V/60 Cycle) Stainless Steel Macerator w/Seacock Interlock System Refrigerator, 120V/12V, or Icemaker, 120V, Cockpit Wet Bar (In Lieu Of Std Cooler) Rod Holders (4) Spotlight, 5" Remote-Controlled Stereo, Premium Cabin & Cockpit Sound System Sun Pad Table, Cockpit Accessory: Removable Gunwale-Mounted w/Mounting Base & Rod Holders (2) Thrusters - Bow & Stern TV, Flatscreen w/Remote DVD Player - Mid-Cabin Vacuum System, Central Windshield: w/Stainless Steel Frame

PROPULSION T-VD-MerCruiser 8.2 Horizon ECT w/DTS (T-370 PHP) V-Drive Inboards

## Exclusions

---

Owner's personal belongings.

## Disclaimer

---

The Company offers the details of this vessel or yacht in good faith but cannot guarantee or warrant the accuracy of this information nor warrant the condition of the vessel. A buyer should instruct his representatives, agents, or his surveyors, to investigate such details as the buyer desires validated. This vessel or yacht is offered subject to prior sale, price change, or withdrawal without notice.

# PHOTOS



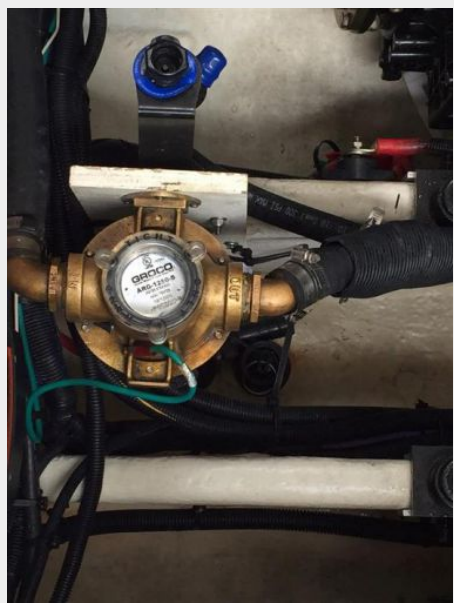














# CONTACTS

---

Andrey Shestakov, leading yacht broker of the sales department of Shestakov Yacht Sales Inc. Shestakov Yacht Sales Inc., the official representative of the Miami/Fort Lauderdale FL headquarters.

## Contact details

---

Email: [andrey@shestakovyachtsales.com](mailto:andrey@shestakovyachtsales.com)

Web: [shestakovyachtsales.com/en/](http://shestakovyachtsales.com/en/)

## Telephones

---

USA: +1(954)274-4435

## Office hours

---

Monday – Saturday: **9:00 - 21:00** EDT

Sunday: **closed**

## Address

---



Harbour Towne Marina, 850 NE 3rd St,  
STE 213, Dania, FL 33004