

7TH WAVE — CABO



Builder: CABO

LOA: 35' 0" (10.67m)

Year Built: 2005

Model: Sport Fisherman

Price: PRICE ON APPLICATION

Location: United States

Our experienced yacht broker, Andrey Shestakov, will help you choose and buy a yacht that best suits your needs 7th Wave — CABO from our catalogue. Presently, at Shestakov Yacht Sales Inc., we have a wide variety of yachts available on our sale's list. We also work in close contact with all the big yacht manufacturers from all over the world.

If you would like to buy a yacht 7th Wave — CABO or would like help answering any questions concerning purchasing, selling or chartering a yacht, please call +1(954)274-4435

TABLE OF CONTENTS

TABLE OF CONTENTS	2
SPECIFICATIONS	4
Overview	4
Basic Information	4
Dimensions	4
Accommodations	4
Hull and Deck Information	4
Engine Information	5
DETAILED INFORMATION	6
Salon	6
Galley	6
Master Stateroom	6
Head	6
Helm Area	7
Electronics	7
Electrical System	7
Engine Room	7
Cockpit	8
Tower	8
Cabo Boats	8
Exclusions	9
Disclaimer	9
PHOTOS	10
CONTACTS	17
Contact details	17
Telephones	17
Office hours	17
Address	17

SPECIFICATIONS

Overview

NEW ARRIVAL

***Low hours with the updated aftercoolers.

*****All engine services up to date.

Don't miss the opportunity to buy this clean well maintained fishing machine.

Basic Information

Category: Sport Fisherman

Sub Category: Express

Model Year: 2005

Year Built: 2005

Country: United States

Dimensions

LOA: 35' 0" (10.67m)

Accommodations

Total Cabins: 1

Total Berths: 1

Sleeps: 2

Total Heads: 1

Hull and Deck Information

Hull Material: Fiberglass

Engine Information

Engines: 2

Manufacturer: Caterpillar

Model: 3126B

Engine Type: Inboard

Fuel Type: Diesel

DETAILED INFORMATION

Salon

- Teak and holly sole, with carpeting
- Open air salon
- Teak trim throughout
- Air conditioning
- Lounge converts to pullman
- Hat shelf
- Stereo AM/FM/CD/DVD
- Hanging locker

Galley

- Panasonic microwave/convection oven
- Refrigerator/freezer, side-by-side
- Corian counter tops with sink
- 2-burner stove with cover
- Mirror storage doors
- GFI AC outlet
- Storage shelf
- Sea rails

Master Stateroom

- Double V berth to port
- Storage drawers under berth
- 17" flat screen LCD TV
- Storage compartments
- Anchor rode access
- Seat
- Hanging locker
- Sun shade
- Stereo speakers
- Air conditioning vent

Head

- Vacu flush head
- Shower stall with door

- Grab rails
- Mirrored door storage
- Teak door
- Vanity
- Sink

Helm Area

- Windshield opening side vents
- Windshield wipers/washers
- Trim tab control
- Electronic controls
- Ice maker under helm seat
- Caterpillar electronic read-out panels
- L shape companion seating with table.
- Helm cover
- Foot rest

Electronics

- Furuno Nav Net
- Furuno RD30 GPS
- Furuno radar open array
- Simrad AP25 autopilot
- Icom ICM502 VHF radio
- Clarion stereo remote head.

Electrical System

- Westerbeake 7.6 kW generator
- (2) 50' shore cords, 30 amp
- Battery charger
- Custom color coated wiring
- Plexiglass wiring covers for protection

Engine Room

- (2) CAT 3126B 450HP engines 1501HRS
- Westerbeake 7.6 Gen. 2217 HRS
- Oil change system
- Trolling valves

- Hydraulic helm deck lift system
- Hydraulic steering system

Cockpit

- Aluminum reinforcing plate for chair.
- Pompanette rocket launcher (4) rod holders.
- Bait prep center
- Cockpit coaming pads
- Fish boxes, insulated, with macerator
- Rod-gaff rack, port and starboard
- Tackle center with 6 drawers
- Fresh and raw water wash downs
- Live well / bait tank, 40 gallon, in transom
- (5) rod holders
- Transom door with top gate
- Freezer plate
- Window in bait tank

Tower

- Furuno Nav net, Clarion stereo remote head.
- Outriggers
- Top single rail 4' gap
- Polish - pipe
- Molded standing platform
- Tower sun shade: 72" molded top
- Oval tube for sun shade
- Recessed white spreader lights
- Steering station with controls and engine cut off
- Antenna bracket
- Antenna stand off plus 2 halyards
- Bench seat with 72" back rest
- 50" contoured face control box
- Flush mounted black compass
- Anchor light
- Radar box
- Recessed navigation lights

Cabo Boats

Some boats claim to raise fish. Others, like the CABO 35 Express, let their success speak for

itself. A favorite of charter captains and seasoned anglers worldwide, she features a hull with small propeller pockets and clean underwater lines that create two ideal trolling alleys behind the transom, greatly increasing the number of strikes. It's one of the reasons other builders continue to study this benchmark model as they launch their own versions of our popular mid-sized sportfish.

Exclusions

Owner's personal belongings.

Disclaimer

The Company offers the details of this vessel or yacht in good faith but cannot guarantee or warrant the accuracy of this information nor warrant the condition of the vessel. A buyer should instruct his representatives, agents, or his surveyors, to investigate such details as the buyer desires validated. This vessel or yacht is offered subject to prior sale, price change, or withdrawal without notice.

PHOTOS

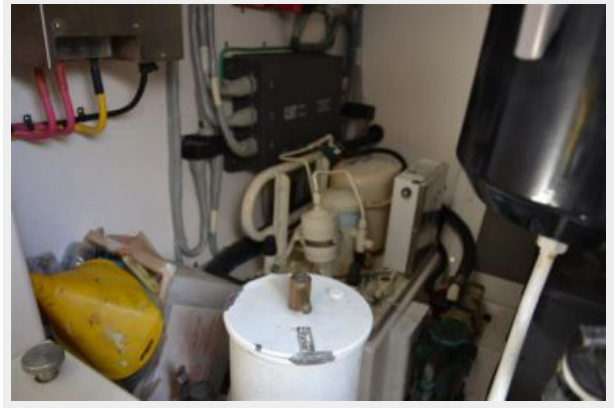














CONTACTS

Andrey Shestakov, leading yacht broker of the sales department of Shestakov Yacht Sales Inc. Shestakov Yacht Sales Inc., the official representative of the Miami/Fort Lauderdale FL headquarters.

Contact details

Email: andrey@shestakovyachtsales.com

Web: shestakovyachtsales.com/en/

Telephones

USA: +1(954)274-4435

Office hours

Monday – Saturday: **9:00 - 21:00** EDT

Sunday: **closed**

Address



Harbour Towne Marina, 850 NE 3rd St,
STE 213, Dania, FL 33004