

OFFICE DAY — HATTERAS



Судостроитель: HATTERAS

Год постройки: 1998

Модель: Катер для спортивной рыбалки

Цена: **ЦЕНА ЯХТЫ ПО ЗАПРОСУ**

Местонахождение: United States

Длина общая: 43' 2" (13.16m)

Ширина: 14' 3" (4.34m)

Мин. осадка: 4' 4" (1.32m)

Макс. осадка: 4' 6" (1.37m)

Крейс. скорость: 24 Kts. (28 MPH)

Макс. скорость: 29 Kts. (33 MPH)

Купить **OFFICE DAY — HATTERAS** а также выбрать подходящую вам яхту из нашего каталога яхт вам поможет опытный яхтенный брокер Андрей Шестаков. На сегодняшний день компания **Shestakov Yacht Sales Inc.** имеет большое количество яхт в собственном списке продаж, а также тесно сотрудничает со всеми крупными яхтенными производителями по всему миру.

Для того чтобы купить яхту **OFFICE DAY — HATTERAS** а также проконсультироваться по любому вопросу связанному с покупкой, продажей, чартером яхт позвоните по телефону **+7(918)465-66-44**.

ОГЛАВЛЕНИЕ

ОГЛАВЛЕНИЕ	2
ХАРАКТЕРИСТИКИ	5
Основная информация	5
Размеры	5
Скорость, вместимость и масса	5
Размещение	5
Корпус и палуба	6
Информация о двигателе	6
ПОДРОБНОЕ ОПИСАНИЕ	7
Walkthrough	7
Salon	7
Galley	7
Head	8
Master Cabin	8
Foredeck	8
Lower Cockpit	9
Helm Deck	9
Helm	9
Tower	9
Engine Room	10
Electrical	10
Remarks	10
Exclusions	11
Исключения	11
Отказ от ответственности	11
ФОТОГРАФИИ	12
Salon Looking Forward	12
Salon to Starboard	12

Convertible Salon Sofa	12
Salon TV	12
Salon Looking Aft	12
Galley to Port	12
Galley	13
Permanently Installed Dehumidifier	13
Head	13
Head	13
Master Cabin Looking Forward	13
Master Cabin to Starboard	13
Master Cabin to Port	14
Bow	14
Bow Seats	14
Pulpit/Windlass	14
Cockpit	14
Cockpit Freezer	14
Cockpit Forward	15
Cockpit Tackle Center	15
Rocket Launcher/Leaning Post	15
Glendinning	15
Engine Room Access	15
Helm Area Seating	15
Helm Area Aft	16
Helm Area Looking Aft	16
Helm Deck AC	16
Helm to Starboard	16
Helm	16
Helm Detail	16
Helm Below	17

Tower	17
Tower	17
View Forward	17
View Aft	17
Tower Controls	17
Tower VHF	18
Tower Seat	18
Engine Room	18
Port Engine	18
Starboard Engine	18
Forward of Starboard Engine	18
Forward of Port Engine	19
Behind Starboard Engine	19
Engine Room Aft	19
Generator	19
Bow View	19
Stern View	19
Evening Profile	20
КОНТАКТЫ	21
Контактная информация	21
Телефоны	21
Время работы	21
Адрес	21

ХАРАКТЕРИСТИКИ

Основная информация

Тип судна: Катер для спортивной рыбалки

Подкатегория: Express

Модельный год: 1998

Год постройки: 1998

Страна: United States

Верх: Full / Tuna Tower

Открытая палуба мостика: Да

Кубрик: Да

Размеры

Длина общая: 43' 2" (13.16m)

Длина по ватерлинии: 39' 6" (12.04m)

Длина палубы: 43' 2" (13.16m)

Ширина: 14' 3" (4.34m)

Мин. осадка: 4' 4" (1.32m)

Макс. осадка: 4' 6" (1.37m)

Скорость, вместимость и масса

Крейс. скорость: 24 Kts. (28 MPH)

Макс. скорость: 29 Kts. (33 MPH)

Чистый вес: 19 Pounds

Вместимость воды: 154 Gallons

Вместимость сточного бака: 50 Gallons

Объем топливного бака: 530 Gallons

Размещение

Всего кают: 1

Всего коек: 1

Спальные места: 4

Всего ком. состава: 1

Корпус и палуба

Материал корпуса: Fiberglass

Материал палубы: Fiberglass

Комплектация корпуса: Modified V-Hull

Цвет корпуса: white

Отделка корпуса: Fiberglass

Дизайнер корпуса: Hatteras

Дизайнер экстерьера: Hatteras

Дизайнер интерьера: Hatteras

Информация о двигателе

Двигатели: 2

Производитель: Detroit Diesel

Модель: 6V92TA's

Тип двигателя: Inboard

Тип топлива: Diesel

ПОДРОБНОЕ ОПИСАНИЕ

Walkthrough

Boarding OFFICE DAY is from the molded port or starboard Cockpit steps and into the spacious Cockpit with freezer, tackle center, transom door and centerline Engine Room access.

Slightly to starboard are two steps up to the carpeted Helm Deck area with a large wrap around settee to port, a bar area to starboard and fully forward the starboard side main helm.

Centerline are four steps, the Cabin area with a settee that converts to sleep two to starboard, the Galley to port and the Master Cabin with a centerline tapered berth fully forward. Within the Master Cabin to port is a private Head with a stall shower.

The tower offers great visibility, full controls and has a bench seat for two to three people.

Salon

Entering on centerline from the Helm Deck is the Salon to starboard and open Galley to port.

Four maple and holly steps lead to the maple and holly sole of both the Galley and the Salon.

An L shaped sleeper sofa with a pullout base is to starboard, the separate AC and DC panels are aft and above. The outboard backrest of the sofa hinges up to reveal rod storage. Additional rod storage for two rods is above, below the four hinged storage cabinets. Three halogen lights are in the soffit above.

Forward starting from the top is a 32" Insignia LCD TV and a Yamaha AM/FM/AV receiver. Bose cube speakers provide sound. Below is a Corian countertop with a lift up storage area perfect for the grey Hatteras boxed manuals. Below are three storage drawers. Above the Salon are three additional halogen mini spots.

Below is a hatch to the bilge and two bound area rugs.

Galley

The Galley is opposite to port and open to the Salon. It is U shaped off the outboard bulkhead and contains the following equipment:

Obrigo 2 burner cook top Corian solid surface countertop Corian molded deep sink Removable spray faucet w/single lever control Sharp Carousel white microwave w/work light & exhaust fan above Black & Decker under counter coffeemaker VDO water gauge in cabinet Nova Kool built in refrigerator Nova Kool built in freezer (16) Maple cabinet doors (3) Maple Galley drawers GFCI

outlet (2) Under counter lights

Head

Next forward from the Galley to port is the private Head with a maple and holly sole, a bow front mica vanity with two storage cabinets below and a Corian countertop with molded sink above.

Two mirrored sliding doors access a medicine cabinet above. The toilet is a Sealand Vacuflush unit.

The stall shower has a clear tempered glass bi fold door, a shelf, a handheld or wall mountable fixture, a light and an exhaust fan.

The Head also has two entrance doors, one from the Salon, the other from the Forward Master.

Master Cabin

All the way forward entered via pocket door is the Master Cabin with a raised pedestal tapered queen size centerline berth. To both port and starboard are built in nightstands. The headboard is upholstered and has a mirrored panel above with access to the rope/chain locker.

A soffit above has two stereo speakers and two reading lights with rope accent lighting above the soffit. To both port and starboard are four hinged access doors above the padded hull liner.

Next aft on both the port and starboard sides is a cedar lined half height hanging locker with a drawer below.

The berth lifts up to reveal a large storage area. A hatch in the carpeted sole accesses the shower sump.

Overhead is a large Bomar deck hatch with screen and two additional halogen lights. A dressing mirror is on the back of the Head door.

Foredeck

Fiberglass nonskid deck Molded fiberglass bow pulpit w/o wood inlay Stainless steel anchor chute & roller Maxwell windlass w/ up /down foot switches Plow type anchor w/all chain rode Bow pennant staff socket Secondary rope deck pipe Welded stainless steel bow rail Dual spring line cleats International Navigation lights Large Bomar deck hatch into Forward Cabin (2) Large closed cell foam sun cushions w/headrests (3) Windshield wipers Center opening windshield

panel

Lower Cockpit

Fiberglass nonskid sole (2) Molded steps to side deck Hinged transom door w/gate Freshwater wash down Saltwater wash down 4 Rod rocket launcher/leaning post w/(2) stainless steel cup holders & drawer (2) Stereo speakers Top loading fiberglass freezer, starboard side Centerline Engine Room access w/(2) hinged door access Hawse pipes in transom w/inboard cleats Under deck removable catch well (7) Flush mount gunwale rod holders Cockpit access to top of fuel tank (2) Rupp double spreader outriggers 2 Door tackle center w/(4) drawers & open cabinet 12 Volt outlet at transom Fiberglass swim platform Under platform swim ladder CATV inlet Indirect deck lights

Helm Deck

Fiberglass sole w/removable carpet 4 Side clear vinyl enclosure w/rollup door L shaped seating to port w/hinged storage access to below (2) Built in cup holders to port by AC vent 16,000 BTU Air conditioner portside w/reverse cycle heat & digital controls Overhead rod storage for (6) rods 16,000 BTU AC unit in cabinet, starboard side Hinged bar top to starboard w/sink & storage below U Line icemaker in cabinet Stereo speakers (6) Overhead DC lighting (white/blue LED) Adjustable height wood table to port w/(4) drink holders

Helm

Stainless steel helm wheel 2 Person upholstered raised bench helm seat electrically adjustable fore & aft w/footrest DDEC/Sturdy separate clutch & throttle controls (2) DDEC LCD engine monitors DDEC electronic backup controls DDEC "take" control & synchronizer controls Icom M-412 VHF w/DSC Raymarine E-120 W MFD w/chart, radar, fish finder (2) Analog fuel gauges (2) Analog voltmeters Start/stop buttons w/key switches Raymarine Evolution autopilot (2015) Ritchie electronic compass Fusion MS RA 200 marine stereo Windlass controls Pull handle for fire system Overhead grab rail Hatteras Systems monitor (3) Bilge pump switches w/indicator lights Trim tab controls Horn switch Courtesy light switches Spreader light switches Backup mechanical engine controls under helm seat

Tower

Helm steering w/stainless steel wheel Emergency stop buttons DDEC/Sturdy single lever controls Take control/synchronizer controls Windlass controls Audio/visual alarm indicators Upholstered seat for 2 w/backrest 4" Plastimo magnetic compass Fusion remote stereo control

Raymarine E-7 MFD w/cover Sunbrella cover for control box Hinged door storage below helm in control box Icom M 304 VHF radio in control box Raymarine HD digital Radome radar scanner Fiberglass buggy top Fiberglass tower base Fiberglass hardtop over Helm Deck Handrails on fiberglass hardtop for side decks Rupp center rigger 6 Place rocket launcher on aft hardtop rail Marine electric dual trumpet horns (2) Quartz lights facing aft (2) 16' VHF antennas

Engine Room

T/DDEC 6V92TA main engines Horus 1494 port, 1497 starboard, port rebuilt 2011 (3) Auto/manual bilge pumps 120 AC Volt fluorescent Engine Room lighting 12 Volt incandescent engine Room lighting (2) Racor 1000 fuel filters w/vacuum gauges for main engines Walker Air Sep crankcase ventilation system Epoxy hard wrapped exhaust system Trim tab system Kidde Fire control system (2) Engine coolant expansion bottles (2) Marine Air AC compressors Dripless shaft seals w/spare seals 10.5 Gal. Atwood water heater Frigibar freezer compressor for Cockpit freezer Racor 500 fuel filter for generator Twin Disc 2.95 to 1 reduction gears Aquamet 17, 2 1/2" Stainless steel prop shafts Michigan Nibral 5 blade props Par Fresh Water water pump Groco oil change system Y valve for head system

Electrical

12 Volt DC systems 120/240 Volt AC systems Dyteck 12 volt 40 amp battery charger Battery parallel switch (2) 8D batteries 50 Amp shore cord on Glendinning retrieval reel Onan 8 KW generator in sound shield w/1274 hours KISAE 96 amp power converter (3) Battery shutoff switches Jefferson isolation transformer AC switching panel generator/shore/transformer AC analog volt & amp gauges AC panel w/(3) 220 volt breaker protected circuits AC panel w/(9) 110 volt breaker protected circuits DC panel w/battery condition meter DC panel w/(23) 12 volt breaker protected circuits (8) Breaker protected 12V circuits for electronics under helm seat

Remarks

OFFICE DAY is one of the rare Hatteras 43 EX models made on the same successful platform as the 43 FB SF.

She offers a maple interior with a single Forward Stateroom and a convertible settee. Her newer Palm Beach tower shows well. She was substantially updated in 2012 with the tower, electronics and air conditioners all renewed at that time.

OFFICE DAY looks just as striking as the newer Express Fisherman at a fraction of the price.

Exclusions

While every effort was made to list all pertinent included equipment aboard OFFICE DAY, there are some personal belongings aboard. Prospective purchasers should assume any item not specifically mentioned herein will not convey at closing.

Исключения

При продаже яхты исключаются личные вещи владельца.

Отказ от ответственности

Компания предоставляет описание судна или яхты добросовестно, но не может гарантировать точность этой информации, а также не ручается за техническое состояние. Покупатель должен проинструктировать своих агентов или оценщиков исследовать представленную информацию более подробно, по собственному желанию. Продажа судна или яхты, изменение цены или снятие с продажи будет происходить без предварительного уведомления.

ФОТОГРАФИИ

Salon Looking Forward



Salon to Starboard



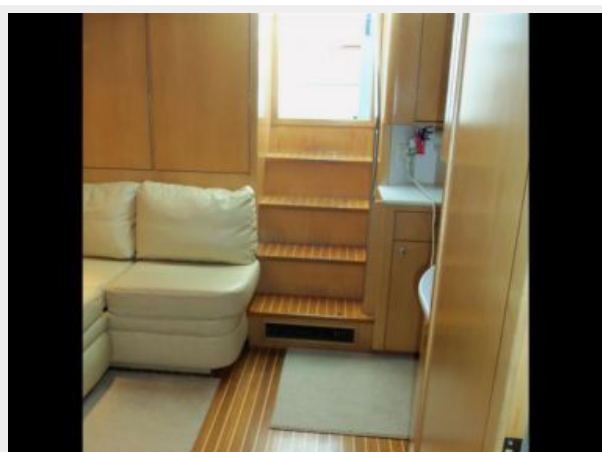
Convertible Salon Sofa



Salon TV



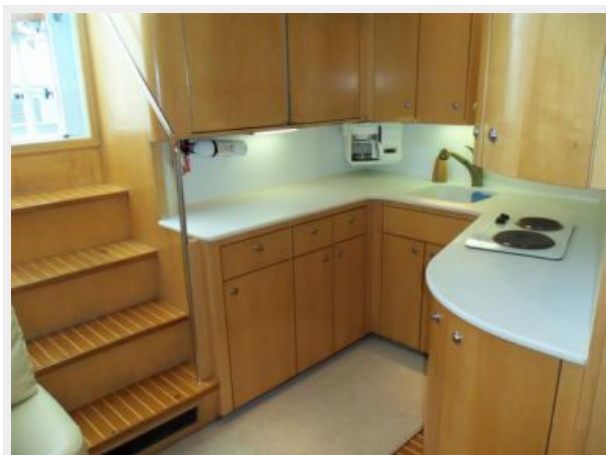
Salon Looking Aft



Galley to Port



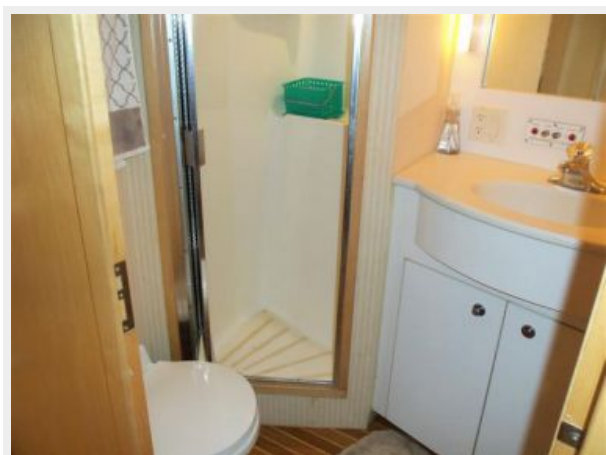
Galley



Permanently Installed Dehumidifier



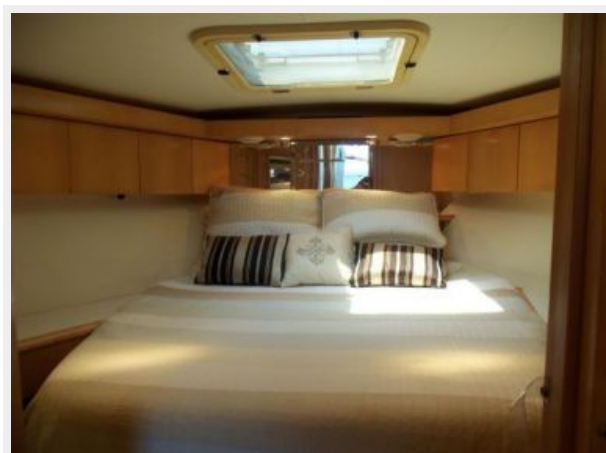
Head



Head



Master Cabin Looking Forward



Master Cabin to Starboard



Master Cabin to Port



Bow



Bow Seats



Pulpit/Windlass



Cockpit



Cockpit Freezer



Cockpit Forward



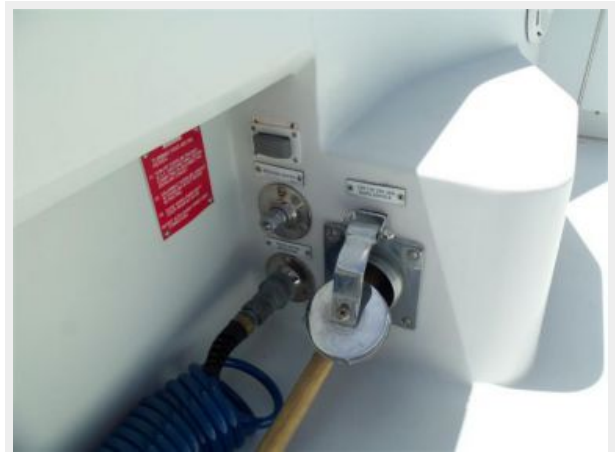
Cockpit Tackle Center



Rocket Launcher/Leaning Post



Glendinning



Engine Room Access



Helm Area Seating



Helm Area Aft



Helm Area Looking Aft



Helm Deck AC



Helm to Starboard



Helm



Helm Detail



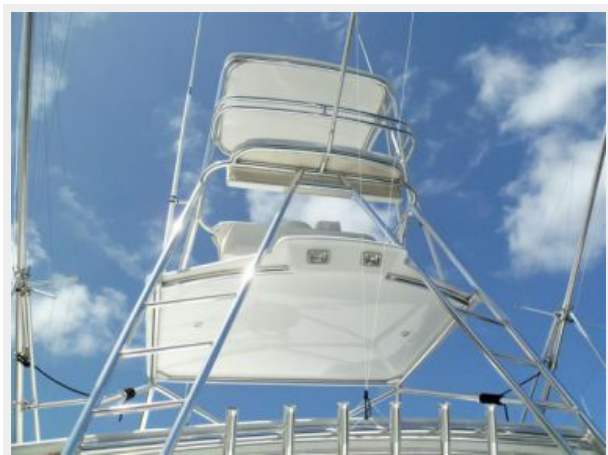
Helm Below



Tower



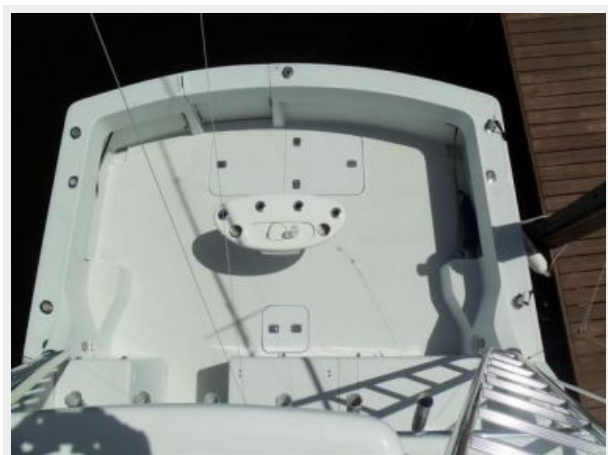
Tower



View Forward



View Aft



Tower Controls



Tower VHF



Tower Seat



Engine Room



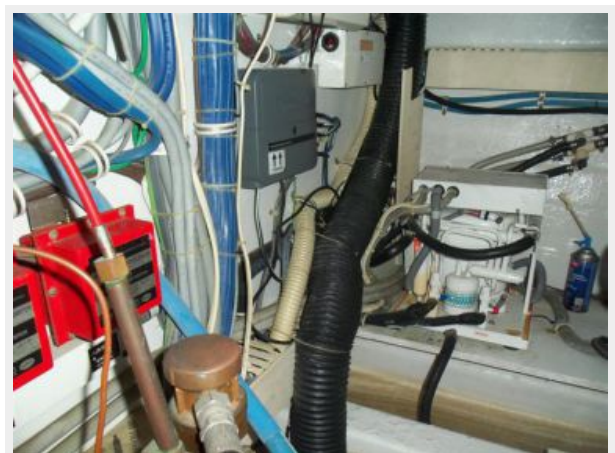
Port Engine



Starboard Engine



Forward of Starboard Engine



Forward of Port Engine



Behind Starboard Engine



Engine Room Aft



Generator



Bow View



Stern View



Evening Profile



КОНТАКТЫ

Андрей Шестаков (Andrey Shestakov) – ведущий яхтенный брокер отдела продаж яхт и судов компании Shestakov Yacht Sales Inc. Официальный представитель Shestakov Yacht Sales Inc. для русскоговорящих клиентов в центральном офисе компании в Майами/Форт Лодердейл/Флорида/США.

Контактная информация

Email: andrey@shestakovyachtsales.com

Web: shestakovyachtsales.com

Телефоны

Краснодарский край: **+7(918)465-66-44**

США, Майами, Флорида: **+1(954)274-4435**

Время работы

Понедельник – Суббота: **9:00 - 21:00**
EDT

Воскресенье: **Закрето**

Адрес



Harbour Towne Marina, 850 NE 3rd St,
STE 213, Dania, FL 33004