

ONE MORE TIME — FALCON



Builder: FALCON

Year Built: 2003

Model: Motor Yacht

Price: PRICE ON APPLICATION

Location: United States

LOA: 86' 0" (26.21m)

Beam: 21' 0" (6.40m)

Max Draft: 6' 0" (1.83m)

Cruise Speed: 24 Kts. (28 MPH)

Max Speed: 26 Kts. (30 MPH)

Our experienced yacht broker, Andrey Shestakov, will help you choose and buy a yacht that best suits your needs **ONE MORE TIME — FALCON** from our catalogue. Presently, at Shestakov Yacht Sales Inc., we have a wide variety of yachts available on our sale's list. We also work in close contact with all the big yacht manufacturers from all over the world.

If you would like to buy a yacht **ONE MORE TIME — FALCON** or would like help answering any questions concerning purchasing, selling or chartering a yacht, please call **+1(954)274-4435**

TABLE OF CONTENTS

TABLE OF CONTENTS	2
SPECIFICATIONS	5
Basic Information	5
Dimensions	5
Speed, Capacities and Weight	5
Accommodations	5
Hull and Deck Information	5
Engine Information	6
DETAILED INFORMATION	7
86' Falcon Motor Yacht ONE MORE TIME	7
Decks & Superstructure	7
Topsides	9
Lazarette	9
Flybridge	10
Wheelhouse	12
Under Pilothouse Console	13
Lower Helm	13
Upper Helm	13
Salon	14
Dining Salon	14
Galley	15
Appliances	15
Day Head - Main Deck	16
Main Deck Companionway - Starboard	16
Accommodations	17
Accommodations Deck Companionway	17
Forward Companionway	17
Under Forward Companionway Sole	17

Master Stateroom - Aft	17
Master Head	18
VIP Stateroom - Forward	18
VIP Bathroom	19
Guest Stateroom - Port	19
Guest Head - Port	20
Guest Stateroom - Starboard	20
Guest Head - Starboard	21
Crew Quarters	21
Electronics	22
Electrical Equipment	23
Tenders & Toys	23
Tank Specifications	23
Engine Room	23
Exclusions	25
Disclaimer	25
PHOTOS	26
86' Falcon Motor Yacht ONE MORE TIME	26
86' Falcon Motor Yacht ONE MORE TIME	26
86' Falcon Motor Yacht ONE MORE TIME	26
86' Falcon Motor Yacht ONE MORE TIME	26
Salon	26
86' Falcon Motor Yacht ONE MORE TIME	26
Salon	27
Galley	27
Master Stateroom	27
Galley	27
Master Stateroom	27
Master Stateroom	27

VIP Stateroom	28
Companionway	28
Guest Stateroom-Port	28
Guest Stateroom-Starboard	28
Guest Stateroom-Starboard	28
Engine Room	28
Engine Room	29
Engine Room	29
CONTACTS	30
Contact details	30
Telephones	30
Office hours	30
Address	30

SPECIFICATIONS

Basic Information

Category: Motor Yacht

Model Year: 2003

Year Built: 2003

Country: United States

Dimensions

LOA: 86' 0" (26.21m)

Beam: 21' 0" (6.40m)

Max Draft: 6' 0" (1.83m)

Speed, Capacities and Weight

Cruise Speed: 24 Kts. (28 MPH)

Max Speed: 26 Kts. (30 MPH)

Displacement: 130000 Pounds

Water Capacity: 528 Gallons

Fuel Capacity: 2100 Gallons

Accommodations

Total Cabins: 4

Sleeps: 9

Total Heads: 4

Captain Cabin: True

Crew Cabin: 1

Hull and Deck Information

Hull Material: Fiberglass

Hull Configuration: Modified V-Hull

Hull Designer: Stefano Righini

Engine Information

Engines: 2

Manufacturer: MTU

Model: 12V2000 M91

Engine Type: Inboard

Fuel Type: Diesel

DETAILED INFORMATION

86' Falcon Motor Yacht ONE MORE TIME

Designed by Stefano Righini, renowned globally for Azimut, this 86' Falcon Motor Yacht, ONE MORE TIME is a traditional two decks and flybridge layout. Her combination of sportiness, elegance and spaciousness assure guests of both entertainment and relaxation. Boarding aft brings you right onto the aft deck area. There is ample bench seating in addition to an L-shaped lounge area to port with a high gloss teak table. There are four director chairs (folding) that can be used for additional seating. This area also has built in ice maker and fridge, Vizio flat screen TV and stereo. When not being used for meals, it is an ideal area to relax with music and/or reading. This deck is completely walk around to the bow where there is a huge sun bed with deep locker storage on each side. Forward of the sun bed is the access to the crew quarters. From the aft deck moving forward we enter through sliding glass door to a spacious and open layout of both salon and formal dining area. The decor throughout the yacht is predominately satin cherry wood. This is combined with bamboo flooring and ample windows for a light, airy feeling. Continuing forward of the dining area, there are internal steps up to the flybridge. To port is the entrance to the galley. Just forward of the galley is the main deck's day head. A few more steps forward bring you to the centrally located helm station. In this area to port is an L-shaped dinette where you can sit and enjoy the passage viewing. Below deck, guests can retreat to four spacious staterooms. Accommodations are provided for eight guests and each stateroom has an ensuite head. Forward below are the captain's quarters with double bed sleeping accommodation and heads.

Decks & Superstructure

- Teak over fiberglass deck
- Fiberglass overhang with four port and four starboard lights; sliding hatch, to boat deck starboard with 9-step teak stairwell and stainless steel hand rail
- Port and starboard fuel fill in recess
- Port and starboard vents
- Oil fill, port
- Four port and four starboard courtesy lights
- Port and starboard doors to interior
- Port and starboard boat hook in brackets above salon windows
- Port and starboard teak rails with stainless steel stanchions and hand rails
- Port and starboard hawse eye spring cleats
- Port and starboard freeing ports
- Three windshield wipers
- Port and starboard navigation light

Boat Decks:

- Molded fiberglass nonskid deck with drains, port and starboard aft
- Stairwell to the aft deck with stainless steel hand rails, port
- Foundation for boat crane, starboard
- Five 24" life rings SOLAS approved
- EPIRB, bracket and hydro release (no EPIRB), hydrostatic release:
- Tender cradle athwartship
- Two Zodiac 8-person life rafts, hydrostatic release
- Stern light
- Removable stainless steel railings, aft
- Freshwater washdown, port
- 110-volt outlet, forward

Foredecks & Side Decks:

- Stainless steel fairleads port and starboard at the bow
- Chain locker with light, port and starboard chain bins with a approximately 300' of chain each, valve for a fire station hose nozzle in the starboard locker, chain wash
- Step up to the foredeck, port and starboard
- Fuel fills, port and starboard
- Boat hook port and starboard in recess
- Port and starboard stainless steel hawse eye cleats
- Teak over fiberglass deck
- Teak platform with step at bow with winch pendant plugs, under
- Stainless steel hand rails and stanchions on teak hand rail
- Speaker and burgee staff, forward
- Port and starboard bow stainless steel bits
- Port and starboard Lofrans electric anchor windlass with gypsy, chain stripper and brake
- Port and starboard locker hatch in the superstructure
- Teak table over the anchor winches with canvas cover
- Port and starboard stainless steel fold-down boat fender holder
- Bow seat with cushions, two stereo speakers, hatch to the interior
- Sun lounge cushions recessed aft of bow seat (cushions in dining salon)
- Freeing ports, port and starboard
- Vents, port and starboard
- Storage locker, starboard, with fire hose and nozzle (for the chain locker)
- Overhang port and starboard with 3 lights each side

Aft Deck:

- Teak over fiberglass sole
- Nine teak steps to the flybridge (port with stainless steel hand rail and courtesy lights)
- Enclosed bulwarks with teak cap rail and stainless steel handrail
- Stainless steel post, port and starboard
- Fiberglass overhead with recessed lights, four stereo speakers, loud hailer horn, closed circuit television camera

- Stainless steel sliding door to salon
- Teak top 2-leaf table (not secured)
- Two teak folding deck chairs, L-shaped seating forward with top loading freezer and storage under
- 6 adult Type I life jackets
- Tender tow rope
- Pilaster locker with storage, starboard
- Port and starboard bulwark doors with breakaway stainless steel hand rail
- Two port and two starboard stainless steel fairleads
- Port and starboard stainless steel stern bits
- Port and starboard warping windlass with deck switch
- Gangway controls, port aft
- Oil fill, aft
- Water fill, starboard aft
- Port and starboard bulwark door to transom steps
- Fire emergency panel with fuel locking handle and two "fire-fighting start" handles, port aft
- Lazarette access, aft
- Bench seating aft

Topsides

- Passarelle, port
- Portholes and deadlights, port and starboard
- Integral fiberglass swim platform with teak deck, port and starboard stainless steel bollards and stainless steel hand rails
- Mounting bracket for swim ladder, centerline
- Watertight door to lazarette, centerline on transom
- Port and starboard three steps with teak treads to aft deck
- Three port and four starboard courtesy lights
- Locker, starboard, with hot/cold water faucet to showerhead on hose; dockside water connector; fresh water outlet
- Exhaust sponsons, port and starboard
- Locker, port, with retractable 100-amp shore power cord with in/out switch
- Port and starboard boarding ladder bracket
- Port and starboard approximately two hundred-pound Navy stockless anchor with stainless steel plating

Lazarette

- Discharge of oil plaque
- Access via transom watertight door
- Shore power cord Cablemaster and storage drum, port

- Acme transformer – for shore power
- Four 12-volt 8D batteries in covered box for service
- Two Mastervolt 24-volt 100-amp battery chargers
- Service battery cut-off switch
- Hydraulic steering actuator
- Power steering pump, starboard
- Hydraulic pump for passarelle, port
- Autopilot feedback sender
- 6-kg CO2 fire extinguisher
- Fire ax
- 2-kg dry chemical fire extinguisher, tag
- Rudder angle indicator sender
- Two 30-kg CO2 cylinders; tag
- Exhaust blower for battery box
- 6-step aluminum ladder to hatch on the aft deck
- Watermaker low pressure raw water pump
- Tenicomar water maker with water filter, high pressure pump, control panel and two membranes
- Air conditioning raw water cooling pump
- Air conditioning chilled water circulation pump
- Air conditioning chilled water compressor
- 220-volt air compressor with reservoir
- Aqua Air air conditioning system control panel for pump and compressors
- 24-volt electric/automatic bilge pump
- 110-volt GFI outlet
- Suction for remote mounted pump
- High water alarm switch
- Passarelle control panel
- Remote steering station with stainless steel steering wheel, valve on steering hydraulics, haler horn and rudder angle indicator
- Galvanic isolator, port
- D.C. lighting
- Fluorescent lighting
- Shore power inlet breaker, port
- Manual fire pump with hose, valve and nozzle
- Dockside water pressure regulator, starboard

Flybridge

The indoor stairs from the main deck brings you up to the open and spacious flybridge area. The helm station is to port with bench seating. Directly behind is an expansive sunbed area for working on a tan. There is ample storage beneath the sun bed. To starboard is a L-shaped built-in bench seating with a triangular Hi-Lo table that can easily seat 8 comfortably for outdoor lunch

or dinner under the stars. This area is covered with a canvas top to protect from the sun. Included up here is an ice-maker, grill, sink/faucet, and fridge, perfect for easy access or crew service. All outdoor cushions are covered in beige fabric and are in good condition. Aft of this seating area is the davit and storage for the tender, wave-runner and kayaks. To port stairs lead down to the aft deck.

- Molded fiberglass nonskid deck
- Bimini top with stainless steel frame
- Fiberglass radar arch with two recessed lights, two stereo speakers; KVH satellite TracVision DV366 television antenna, Garmin radar scanner, GPS antennas, one trumpet horn, 4 VHF antennas, Fusion stereo, closed circuit television camera, access panels, port and starboard, KVH TracVision M7 antenna, alarm horn, amber alarm lamp, television antenna, search light, forward navigation and anchor light, lightning disappator, wind speed/direction antenna
- Sliding stainless steel hatch to wheelhouse, starboard
- Tinted windscreen with stainless steel frame
- Helm console, port, with:
 - Ritchie compass
 - Yacht controller switch
 - Rudder angle indicator
 - Fusion stereo
 - MTU Engine instrumentation with gear oil pressure, engine water temperature, engine oil
 - Garmin autopilot
 - Metalstyle steering wheel
 - Light switches
 - Trim tab gauges
 - Sanshin searchlight panel
 - Garmin GPS Map 7612 GPS/chart plotter/depth/radar display
 - Switches for battery parallel, anchor wash, intercom
 - ZF clutch/throttle control
 - Port and starboard anchor windlass control
 - Port and starboard trim tab (flaps) control
 - BCS Bow thruster control
 - Garmin 200 VHF radio
 - Garmin wind speed/direction display
 - Garmin digital speed display
 - Garmin digital depth display
 - Locker, port, with two adult Type II life jackets
 - Helm bench seat with cushions, two locker storage under
 - One port and two starboard courtesy lights
 - Eight step MarQuipt Tide Ride ladder
 - Port and starboard stereo speaker
 - Ocean Kayak and wind surfer (in bag)
 - Cabinet, starboard, with electric grill with lid, U-line ice maker, Vitrifigio refrigerator,

recessed sink with fold down faucet

- Cabinetry, port, with wet bar with lid
- Sun lounge port with storage under
- Ten adult Type II life jackets
- Two pedestal-mounted table
- Starboard L-shaped bench seat with storage

Wheelhouse

- Wood planked sole
- Cherry paneling, trim and molding
- Paneled overhead panels with recessed lights, smoke alarm
- 24-volt and 220-volt Electrical distribution panel below vessel schematics for navigation lights, fire alarm, bilge pump alarms, starboard
- Signal flag locker, port aft
- Opening window starboard
- Curtains on side windows
- Barigo clock
- Barigo barometer
- Barigo thermometer/hygrometer
- Sailor HC7500 MF/HF radio
- Television jack, port
- L-shaped seat, aft, with storage, raised footrest, owner's manuals, table with burled top
- First aid kit
- Hand held search light
- Garmin autopilot
- ZF electronic single lever clutch and throttle control
- Custom pedestal mount helm chair with foot rest
- Port and starboard engine instrumentation panel
- Port and starboard trim gauge
- 110-volt outlets
- Ritchie compass
- Sanshin searchlight control panel
- Two MTU tachometers
- Navicontrol rudder angle indicator
- ICS Nav 6 Navtex display
- Two Garmin GPS Map 7616 displays
- Garmin speed, depth displays
- BCS bow thruster control
- Port and starboard engine ignition, start, stop
- Trim tab control switches
- Garmin VHF 200 radio
- Switches for: windshield wipers, anchor windlass, battery parallel, steering pump, intercom,

ventilation, horn, chain wash and instrument lights

- Display screen for 7 closed circuit television cameras
- KVH TracPhone
- Panasonic telephone
- 2-kg dry chemical fire extinguisher
- Steering wheel

Under Pilothouse Console

- Two Norcold DC refrigerators
- Electrical distribution panel
- Fuel level liters/percentage full chart
- Mastervolt 24-volt 30-amp battery charger
- SSB transceiver
- Eight adult Type II life jackets

Lower Helm

- Leather Stidd chair
- L-Shaped seating/dinette
- ZF electronic controls
- Bow thruster
- KVH SAT phone
- Icom M504 VHF
- ICS NAV6 Navtex
- Remote spot light
- New Garmin 7616 XSV
- Four(4) New 4" Garmin units
- AC/DC main panel

Upper Helm

- ZF electronic controls
- BLS bow thruster remote
- Yacht controller
- Fusion stereo/CD
- Salor C495 SAT phone
- Gamin 7612
- Remote spotlight
- Trim indicator
- Two(2) Fusion iPod plugs

- Five(5) JL audio speakers

Salon

The main salon has an open layout and shares this space with the formal dining area. The large U-shaped, leather sofa in Navajo yellow (butter) to port offers a nice comfortable seating area to relax and watch TV. The high gloss cherry Hi-Lo cocktail/coffee table is perfect to hold magazine or snacks. Two similar colored ottomans can be used as foot stools or additional seating. The windows have Silhouette blinds in matching color. These can be lowered to cut out glare when watching television or create a romantic atmosphere.

- Planked sole
- Vinyl overhead panels with wood moldings, with overhead lights
- Fluorescent lighting recessed in soffits, port and starboard
- Port and starboard Bose stereo speakers
- Custom coffee table with inlays
- Two matching ottomans
- Orion flare kit, expiration December 2019
- Sliding door, aft to aft deck, with draperies
- Port and starboard window alcove with fixed windows and draperies
- Sofa aft with pillows
- Built-in cabinetry starboard with LG television
- Custom L-shaped sofa with storage; subwoofer
- Partition forward between saloon and dining saloon
- Cabinetry, starboard, with electronics with:
 - Yamaha RX-V677 stereo receiver
 - Table lamp
 - KVH gyro TRAC control box
 - Panama MR4300 amplifier
 - Sony PS4 control box
 - Samsung control box
 - Two Crown XLS 1500 amplifiers
- Bronze statue of girl with long hair
- SPT wine cooler
- Frigit air conditioning control panel
- 4 adult Type I life jackets; 2 child

Dining Salon

- Wood planked sole
- Smoke alarm
- Lacquered overhead panels with indirect lighting

- Port and starboard window alcove with window, draperies, fluorescent lighting above
- Custom cherry dining table with eight chairs and inlays
- Closed circuit television camera, port
- Built-in cabinetry starboard with china and glass storage
- Framed artwork with light
- Built-in cabinetry forward and port

Galley

The galley area was completely customized in 2015 and shows like new. The custom cabinets are painted white and has silvery grey granite counter tops and matching granite flooring. The appliances are all stainless and the side by side refrigerator and freezer drawers are covered with matching white custom cabinets.

- Granite sole
- Painted wooden overhead panels with recessed lights, two stereo speakers and smoke alarm
- Opening window, port
- Window alcove with curtains
- Door to side deck, port with brackets for removable lower sill
- Door to dining salon, starboard
- KitchenAid blender
- Espresso machine
- Exhaust fan with work light above stovetop
- Bosch four-burner electric stovetop
- KitchenAid oven
- Cuisinart coffee machine
- Bosch dishwasher
- LG microwave oven
- Granite countertop and back splash
- 110-volt GFI outlet
- Two stainless steel sinks with single lever water faucet with spray hose retractable into faucet
- Kidde 5BC dry chemical fire extinguisher
- Plastimo clock
- Sub-zero refrigerator/freezers with two drawers each
- Fire blanket
- Locker with light, Whirlpool clothes washer and dryer
- Storage cabinets, above and below the counter

Appliances

- Refrigeration: Sub-Zero, Summit, Vitfrigio, Norcold

- Refrigeration: Gas Cook, Camming, Fridge, Freezer
- Icemaker: U-line, Max Ice
- Stovetop: Bosch 4-burner, electric
- Oven: Kitchen Aid- electric
- Dishwasher: Bosch
- Microwave oven: LG
- Water heater: approximately 50-gallons, electric
- Clothes washer/dryer: Whirlpool
- Wine cooler: SPT

Day Head - Main Deck

- Wood plank sole
- Painted wood overhead with two recessed lights
- Tecma head with control panel
- Vanity with marble counter, recessed sink with single lever fixture; storage under and mirror on medicine locker door
- Exhaust blower
- 110-volt GFI outlet

Main Deck Companionway - Starboard

- Wood planked sole
- Cherry trim, molding and paneling
- Overhead panels with recessed lights
- Door to starboard side deck
- Locker with MaxIce ice machine
- Door to salon
- Nine steps up to flybridge with courtesy lights
- Storage locker with shelf, starboard
- Pocket door to the galley
- Access to the main deck and day head
- Stairwell to the accommodation deck
- Access to the pilothouse
- Two lockers on the stairwell to the flybridge with:
 - Galley electrical panel
 - Hold light
 - Mastervolt 24-volt 20-amp battery charger
 - Two 12-volt 4D batteries
 - 110-volt GFI outlet
 - Hot water heater approximately 50-gallons
 - Polyethylene tank
 - Salon electrical panel

Accommodations

Going below to the guest accommodations via ample stairway one gets the feeling of spaciousness provided by the traditional layout. The full beam master has the favorable aft of center-line location. Forward is the VIP and at midship are two guest cabins. One with a double bed and the other with side-by-side twin berths with an additional Pullman berth. Two crew cabins are located at the forward bow area serving also as a sound insulation for the VIP stateroom. The crew area is also more than expected space with head and bunk berths.

Accommodations Deck Companionway

- Carpeted sole
- Eight steps to the main deck with courtesy lights and angiosperm hand rail
- Vinyl overhead with two recessed lights
- Storage locker with shelf, inboard
- 110-volt outlet
- Cherry paneling, trim and molding
- Access to black water tank (aft)
- 2-kg dry chemical fire extinguisher
- Automatic bilge pump, high water alarm and suction for a remote bilge pump under the sole

Forward Companionway

- Engine load gauges and Racor fuel filter gauges for port and starboard engine
- Carpeted sole at bottom with five hardwood steps with courtesy lights
- Vinyl overhead with recessed lights
- Cherry paneling, trim and molding
- Storage locker with access to crew's quarters electrical panel
- Access to the bilge on landing of the stairwell
- Access to the bilge under the carpet

Under Forward Companionway Sole

- Hydraulic bow thruster with header tank
- Electric/automatic bilge pump
- High water alarm switch
- Suction for remote mounted bilge pump
- Hot and cold freshwater manifolds

Master Stateroom - Aft

High gloss cherry wood is continued throughout this level with neutral color carpeting. The full width master stateroom has a king bed center-line. New bedding in 2016 is in a rich grey color with decorative pillows of different sizes and cased in various shades of grey. The headboard is fabric covered in a deeper shade of grey and is topped by glass. Built-in night stands are on each side with lamp lighting. LED lighting is also provided overhead. There is a built-in settee to port with ample custom cabinet storage. The entrance door to the master head is also to port. On the starboard side is additional custom built-in storage cabinets and drawers. This houses a vanity with pop-up mirror, make-up storage and stool seating. The door to access the walk-in closet is also on this side. The room is furnished with a flat screen TV and Bose sound bar.

- Carpeted sole
- Vinyl overhead with recessed lights and cherry trim and smoke alarm
- Vizio television with Bose sound bar
- Port and starboard porthole in alcove with storm cover and curtains
- Built in vanity port with stool, fold up mirror, 3 lockers with shelves and 6 lockers above
- Built in night stands port and starboard with 3 drawers each
- 110-volt outlets
- Cabinetry starboard with refrigerator, loveseat, 4 drawers (aft) and 6 lockers above
- Frigit air conditioning control panel
- Panasonic phone
- Custom king size berth with mattress, bedspread, pillows, shams, 4-drawers, indirect lighting under
- Upholstered headboard with mirror above
- Walk in closet, port
- Access to the head – starboard
- Fuel tank under the sole

Master Head

- Wood planked sole
- Porthole in alcove with curtains and storm cover
- Painted wood overhead with four recessed lights
- Vanity with marble counter and 2 recessed sinks; single lever fixtures, storage under and 4 lights above
- Mirrored panel, aft of vanity
- Tecma head and control panel
- Bidet with 4 lockers above
- Four lockers aft with shelves
- Shower stall with glass door, tiled walls, teak grate sole, showerhead on hose with mixing and diverter valves, overhead lights, exhaust blower, fixed nozzle and two side jets

VIP Stateroom - Forward

The VIP stateroom is midship with a center-line King bed. Mirrored wall acts as her headboard and there are built-in nightstands with lamps on each side. There is ample storage with drawers beneath the bed's platform. She has port and starboard large hanging lockers in addition to custom drawers and cabinets to port. To starboard there is a built-in vanity with makeup mirror and stool. This room is also furnished with LED lighting overhead, a Vizio flat screen TV/sound bar, Sony CD player and ensuite head.

- Carpeted sole
- Vinyl overhead panels with recessed lights
- Cherry trim outboard overhead, custom vinyl-covered panels
- Port and starboard porthole in alcove with storm covers; stereo speaker, curtains
- Built-in bureau, port, with drawers, locker and Summit refrigerator
- Built-in vanity with stool, starboard; with mirror in lid, lockers above and below
- Port and starboard hanging locker starboard with two-kilogram ABC fire extinguisher in each, wall safe in starboard; 24-volt to 12-volt power supply (starboard)
- Vizio television with Bose speaker
- King-sized berth with mirrored panel (forward) upholstered headboard, accent pillows, bedspread, 4 storage drawers, rope lighting under
- Built in port and starboard night stand with three drawers and burlled tops with 110-volt outlets
- 110-volt outlets
- Kenwood stereo
- Smoke alarm
- Frigit air conditioning control panel
- Two transducers, starboard
- Sump tank under the sole

VIP Bathroom

- Wooden plank sole
- Porthole in alcove with curtain and 4 lockers under
- Painted wood overhead with recessed lights
- Mirrored panel, aft, over the sink
- Port and starboard vanity with marble countertop and storage under
- Tecma head and control panel
- Bidet
- 110-volt GFI outlet
- Shower stall inboard with teak grate, two overhead lights, mixing valve, shower nozzle on a hose

Guest Stateroom - Port

- Carpeted sole

- Vinyl overhead panels with recessed lights, smoke alarm
- Porthole alcove with storm cover; three stereo speakers
- Twin berth with headboard, mattress, bedspread, bed pillows, pillow shams, accent pillows, rope lighting, two drawers, two reading lamps
- Mirror on aft bulkhead above night stand and above the headboard
- Two-drawer night stand inboard aft
- Brondi telephone system
- Vizio television and Bose sound bar
- 110-volt outlets
- DC bilge pump high water alarm and shower sump under the sole
- Kenwood radio
- Hanging locker, port forward, with light; Samsung Blu-Ray player; two-kilogram ABC dry chemical fire extinguisher, 24-12 VDC converter
- Built-in lockers, outboard

Guest Head - Port

- Wooden plank sole
- Porthole in alcove with curtain and 4 lockers under
- Painted wood overhead with recessed lights
- Mirrored panel, aft, over the sink
- Port and starboard vanity with marble countertop and storage under
- Tecma head and control panel
- Bidet
- 110-volt GFI outlet
- Shower stall inboard with teak grate, two overhead lights, mixing valve, shower nozzle on a hose

Guest Stateroom - Starboard

- Carpeted sole
- Vinyl overhead panels with nine recessed lights, smoke alarm
- Porthole alcove with storm cover; two stereo speakers
- Frigit air conditioning control panel
- Port and starboard single berth with headboard, mattress, bedspread, bed pillows, pillow shams, accent pillows, two drawers under each
- 3 mirrors on aft bulkhead above night stand and each berth
- Night stand between berths
- Panasonic telephone system with Kenwood stereo
- Reading lights at each berth
- Fold down Pullman berth with support brackets, mattress, sheets and bedspread
- 110-volt outlets

- Vizio television
- Hanging locker, starboard forward, with light; electrical 2 kilogram ABC dry chemical fire extinguisher
- Access to the head forward

Guest Head - Starboard

- Wood plank sole
- Exhaust fan
- 110-volt outlet
- Painted wood overhead panels with recessed lights
- Porthole in alcove with storm cover
- Bidet
- Tecma head and control panel
- Vanity with marble counter; recessed sink, single lever fixture, storage under; mirror forward
- Shower stall with door, overhead light, showerhead on hose with wall mount, mixing valve and teak grate

Crew Quarters

- Watertight hatch to the foredeck
- 4-step aluminum ladder to the foredeck
- Carpeted sole
- Vinyl overhead with three recessed lights and 2 stereo speakers and smoke alarm
- Porthole with storm cover in alcove
- 1-kg dry chemical fire extinguisher, no tag
- Digital clock
- Windlass junction box, forward locker
- Drawer on aft bulkhead
- Upper and lower berths with mattress, bedspread, pillow, pillow sham, locker under the lower berth
- Cherry paneling, trim and molding
- Sony AM-FM CD player
- Reading light at each berth

Crew Quarters Head:

- Teak grate sole/wood plank sole
- 110-volt GFI outlet
- Painted wood overhead panel with two recessed lights
- Porthole alcove with porthole with storm cover
- Exhaust fan
- Storage, outboard, with two mirrored panels

- Vanity with molded counter and recessed sink with hot/cold water faucet on a hose
- Tecma electric head and control panel
- Shower curtain tract with curtain

Bow Crew Cabin:

- Laminate sole
- 110-volt outlets
- Intercom telephone
- Vinyl overhead panels with recessed lights, two stereo speakers and smoke alarm
- Two portholes with storm covers, port
- Raised twin berth with mattress, bedspread, bed pillow, pillow sham, storage under
- Hanging locker with light, 110-volt outlets, shelf and safe
- Sony MP3 player
- Cherry paneling, trim and molding
- Frigit air conditioning control panel
- Vizio television

Bow Crew Head:

- Entrance via bow staterooms
- 110-volt GFI outlet
- Teak grate sole/wood plank sole
- Painted wood overhead panel with four recessed lights
- Porthole alcove with porthole with storm cover
- Storage, under the sink
- Mirrored panel outboard
- Vanity with molded counter, raised sink with hot/cold water faucet, with shower nozzle and hose
- Tecma electric head and control panel
- Tract in the overhead for shower curtain (no curtain)

Electronics

- Radar: Garmin
- VHF: Two Garmin 200
- SATCOM: KVH Trac-Phone
- SATTV: KVH TracVision M7
- AUTOPILOT: Garmin
- GPS: Two Garmin Map 7612
- S.S.B.: Sailor HC4500
- Depthsounder: Garmin video and digital display
- Compass: Two Richie magnetic
- A.I.S.: none

- Searchlight: Sanshin remote operated

Electrical Equipment

Audio/Visual:

- SAT-TV Receivers: Sony digital
- Stereos: Sony / Yamaha / Fusion / Kenwood / Samsung
- Televisions: LG / Vizio

Air Conditioning:

- Manufacturer(s): Aqua Air with Frigit controls – chilled water
- Number of Compressors: Two
- Raw water cooling pumps: One
- Fresh water circulation pumps: One
- BTU's: Two 30,000 each

Tenders & Toys

Tender:

- Make/Model: Walker Bay Generation 400 hard-bottom inflatable
- Year built/Model year: 2015/2015
- 50hp Yamaha

Personal Watercraft:

- Make: Yamaha (Waverunner)
- Model: VX series
- Year built/Model year: 2014/2015
- Hull Identification Number
- Canvas cover

Tank Specifications

- Fuel; Number/Capacity: 1; diesel approximately 2,100 gallons total
- Water; Number/Capacity: 1 approximately 528 gallons total
- Holding; Number/Capacity: 1 approximately 1.28m gallons total

Engine Room

- Closed circuit television camera forward and aft
- Smoke alarm, forward
- Stainless steel fold down sink, aft
- Bracket for outboard motor, aft
- Two 12-volt 8D batteries, centerline, for generators
- Two 12-volt 8D batteries, centerline, for engine start
- Electric/automatic submersible bilge pump, aft
- High water alarm switch, aft
- Suction for remote bilge pump, aft
- Black water discharge pump, starboard
- Manual oil change pump, forward
- Port and starboard lube oil reservoir, aft
- Fuel tank forward centerline
- Fuel valves, forward centerline
- 24-VDC and 220-VAX electrical panel, forward
- 230-volt-volt bilge and fire pumps to 9 compartment manifold, starboard forward and strainers
- Two 24-volt fresh water pressure pumps with two accumulator tanks
- Two 24-volt head pumps fresh or raw water
- Mastervolt 12-volt 25-amp battery charger, aft
- Mastervolt 24-volt 30-amp battery charger, forward
- Official Number: 907934, RJ 69/100
- 110-volt GFI outlet
- Two battery switches for the generators and parallel switch
- D.C. lighting
- LED lights
- Frigit refrigeration solenoids, port forward
- Vent with flaps port forward
- Port and starboard vents, aft
- Intake port and starboard blower, forward, for the engines
- Extraction fans, port and starboard forward
- Bow thruster pump off starboard gear box
- Bow thruster oil reservoir and oil cooler, starboard
- Port and starboard engine local control panel
- Diverter off each engine raw water intake for emergency bilge pumping
- Racor fuel filter to each generator
- Dual Racor fuel filters to each engine
- Fiberglass generator muffler, starboard
- Bow thruster control junction box
- Intercom call box, aft with head set
- Fresh water system manifold and spigot, port forward
- Hand-operated bilge pump to manifold, starboard forward
- Two Onan 22.5 kW 120/240-volt generators:
 - 9,176.7 hours port

- 1,322.5 hours starboard

Exclusions

Owner's personal belongings.

Disclaimer

The Company offers the details of this vessel or yacht in good faith but cannot guarantee or warrant the accuracy of this information nor warrant the condition of the vessel. A buyer should instruct his representatives, agents, or his surveyors, to investigate such details as the buyer desires validated. This vessel or yacht is offered subject to prior sale, price change, or withdrawal without notice.

PHOTOS

86' Falcon Motor Yacht ONE MORE TIME



86' Falcon Motor Yacht ONE MORE TIME



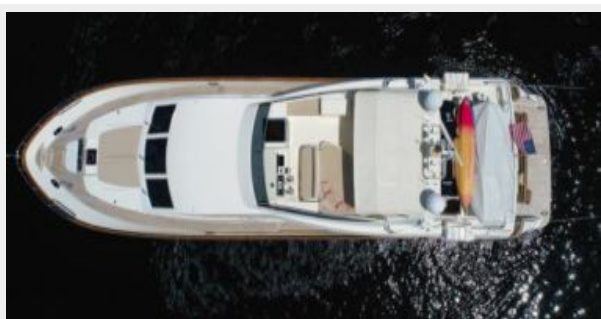
86' Falcon Motor Yacht ONE MORE TIME



86' Falcon Motor Yacht ONE MORE TIME



86' Falcon Motor Yacht ONE MORE TIME



Salon



Salon



Galley



Galley



Master Stateroom



Master Stateroom



Master Stateroom



Companionway



VIP Stateroom



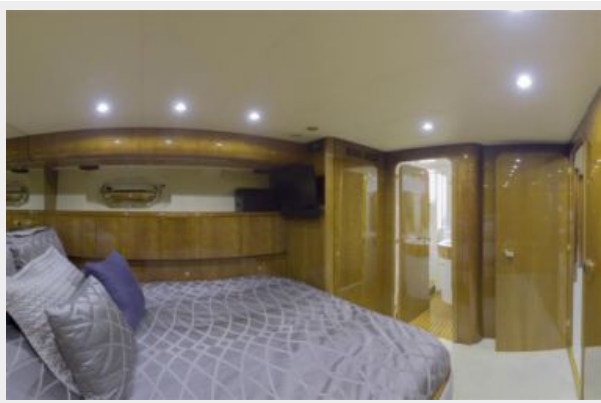
Guest Stateroom-Port



Guest Stateroom-Starboard



Guest Stateroom-Starboard



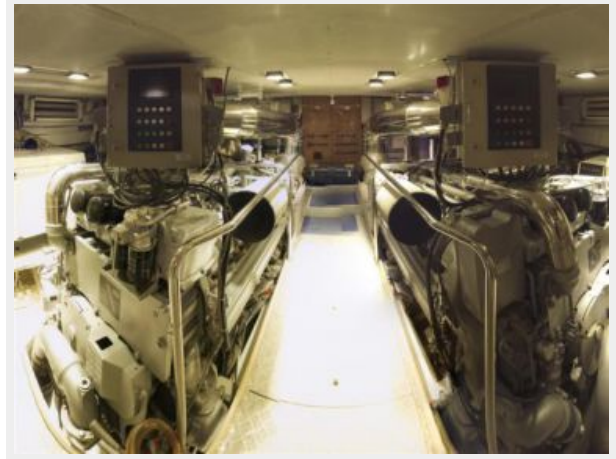
Engine Room



Engine Room



Engine Room



CONTACTS

Andrey Shestakov, leading yacht broker of the sales department of Shestakov Yacht Sales Inc. Shestakov Yacht Sales Inc., the official representative of the Miami/Fort Lauderdale FL headquarters.

Contact details

Email: andrey@shestakovyachtsales.com

Web: shestakovyachtsales.com/en/

Telephones

USA: +1(954)274-4435

Office hours

Monday – Saturday: **9:00 - 21:00** EDT

Sunday: **closed**

Address



Harbour Towne Marina, 850 NE 3rd St,
STE 213, Dania, FL 33004