

SEA WHEELS — CABO



Builder: CABO

LOA: 45' 0" (13.72m)

Year Built: 2007

Beam: 15' 8" (4.78m)

Model: Sport Fisherman

Max Draft: 4' 6" (1.37m)

Price: PRICE ON APPLICATION

Location: United States

Our experienced yacht broker, Andrey Shestakov, will help you choose and buy a yacht that best suits your needs **Sea Wheels — CABO** from our catalogue. Presently, at Shestakov Yacht Sales Inc., we have a wide variety of yachts available on our sale's list. We also work in close contact with all the big yacht manufacturers from all over the world.

If you would like to buy a yacht **Sea Wheels — CABO** or would like help answering any questions concerning purchasing, selling or chartering a yacht, please call **+1(954)274-4435**

TABLE OF CONTENTS

TABLE OF CONTENTS	2
SPECIFICATIONS	6
Basic Information	6
Dimensions	6
Speed, Capacities and Weight	6
Accommodations	6
Hull and Deck Information	6
Engine Information	6
DETAILED INFORMATION	7
Main Salon	7
Galley	7
Forward Stateroom	7
Portside Stateroom	8
Head	8
Helm Deck	8
Helm Console	8
Electronics Package	9
Cockpit	9
Deck	10
Pipewelder's Tuna Tower Package	10
Electrical	11
Hull	11
Mechanical	12
Options	12
Remarks	13
Exclusions	13
Exclusions	13
Disclaimer	13

PHOTOS	14
Salon	14
Salon	14
Salon	14
Salon	14
Salon	14
Galley	14
Galley	15
Galley	15
Galley	15
Galley	15
Forward Stateroom	16
Forward Stateroom	16
Guest Stateroom	16
Forward Stateroom	16
Head	17
Head	17
Head	17
Cockpit	17
Cockpit	18
Cockpit	18
Cockpit	18
Cockpit	18
Cockpit	19
Cockpit	19
Cockpit	19
Cockpit	19
Helm	20
Helm	20

Helm	20
Helm	20
Helm	20
Helm	20
Helm	21
Helm	21
Helm	21
Helm	21
Helm	22
Helm	22
Helm	22
Engine Room	22
Engine Room	22
Engine Room	22
Engine Room	23
Engine Room	23
Engine Room	23
Engine Room	23
Engine Room	23
Engine Room	23
Engine Room	24
Engine Room	24
Engine Room	24
Bow	24
Bow	25
Bow	25
Sea Wheels	25
Sea Wheels	25
Sea Wheels	25

Sea Wheels	25
Sea Wheels	26
Sea Wheels	26
CONTACTS	27
Contact details	27
Telephones	27
Office hours	27
Address	27

SPECIFICATIONS

Basic Information

Category: Sport Fisherman

Model Year: 2008

Year Built: 2007

Country: United States

Dimensions

LOA: 45' 0" (13.72m)

Beam: 15' 8" (4.78m)

Max Draft: 4' 6" (1.37m)

Speed, Capacities and Weight

Water Capacity: 100 Gallons

Fuel Capacity: 800 Gallons

Accommodations

Total Cabins: 2

Hull and Deck Information

Hull Material: Fiberglass

Engine Information

Engines: 2

Manufacturer: MAN

Model: V10-1100CRM

Engine Type: Inboard

Fuel Type: Diesel

DETAILED INFORMATION

Main Salon

- AC duplex outlet/GFI protected
- Access hatch to galley to below deck equipment space
- Air conditioning/heat dual zone, 16,000 BTU, AC
- Custom entertainment center with Bose Lifestyle 38 system AM/FM/CD/DVD
- Deck hatch with retractable shade
- Deep pile carpet
- New flat screen Samsung 40" LED TV, 2016
- Interior wood, teak, superbly joined and finished
- Lighting, DC and AC
- Positive latches used on cabinet doors and drawers
- Pull out double hide-a-bed beneath aft settee
- Upgraded ultra nylon fabrics on saloon settee

Galley

- AC duplex outlet/GFI protected
- Ceramic cook top, two burner, recessed with Corian cover
- Corian counter top with custom Corian sea rails
- Counter top lighting - recessed halogen AC
- Freezer chest 4.5 cu. ft.
- Garbage disposal
- Microwave/convection oven
- Positive latches used on cabinet doors and drawers
- Pull out stainless steel rack shelves
- Sink, deep/custom
- Storage compartments and drawers throughout
- Subzero refrigerator with pull out drawers
- Trash storage compartment

Forward Stateroom

- AC duplex outlet/GFI protected
- A/C controls with 7,000BTU capacity
- Access to anchor rope locker Custom built-in TV
- Drawers operate on sliders
- Flush mount clock
- Fore deck hatch with retractable shade
- Hanging lockers, cedar lined

- Island double bed with 5" mattress, coverlets
- Port and starboard rod storage locker for up to 8 rods
- Positive latches used on cabinet doors and drawers
- Recessed halogen lights, AC and DC
- Storage compartments and large drawers below bed

Portside Stateroom

- Air conditioning with slave control
- Dresser with custom wall mounted mirror
- Overhead lighting, AC and DC
- Reading lights, DC
- Two single berths

Head

- 120 volt duplex outlet/GFI protected
- Corian counter top, custom with Corian sink
- Custom vanity with storage cabinet
- Designer faucets and shower fixtures
- Head, Sealand Vacuflush electric
- Lighting, DC and AC
- Mirror
- Positive latches used on cabinet doors and drawers
- Separate stall shower with automatic shower sump pump
- Toiletry storage cabinet, Corian framed with sliding mirror door
- Ventilating hatch in deck

Helm Deck

- "L" shaped lounge port side and aft with lockable rod storage below
- Large tackle cabinet and storage area to starboard with ice maker area
- Molded fiberglass helm deck with large removable engine service hatch
- Sliding companion way door and fiberglass sea hood
- Stidd helm seat, adjustable with vinyl-covered high density foam cushions, pedestal mount
- Stidd matching companion seat mounted on starboard cabinet
- Gray indoor/outdoor fitted carpet

Helm Console

- Canvas console cover

- Chromed bronze helm wheel
- Compass with light, flush mounted
- Complete custom engine instrument panel with audible warning system and hour meters
- Custom switch panel
- Fire and bilge water level alarms, audible
- Navigation and electronics panel
- Palm Beach pod mounted single lever electric controls

Electronics Package

- Raymarine Open Array Radar w/4' Digital Antenna
- Raymarine 17" Marine Display, Ultra Bright Sunlight Viewable
- (2) Raymarine Processor Modules w/N. American & Caribbean Charts
- Raymarine Command Center Keyboard Raymarine Sirius Satellite Weather Service Receiver
- Raymarine Digital Sounder Module, Dual Freq -Transducer installed in Oil Box
- Raymarine 17" Marine Display for Sounder
- Raymarine Multifunction Color Instrument, 3.5" Display for Depth, Speed, Wind, Navigation Data, Engine Data
- Raymarine Speed/Temp Transducer installed in Fairing Block
- Raymarine VHF Radio/Hailer w/16' VHF Antenna
- Raymarine SmartPilot Corepack, Hydraulic Autopilot w/ reversing Hydraulic Pump
- SmartPilot Push Button Autopilot Control Head w/3" LCD Display
- Tower Display - 12" Ultra Bright, Sunlight Viewable

Cockpit

- Aluminum reinforcing plate installed for mounting fighting chair
- Bait prep center port side includes tackle storage, sink, rigging board, insulated ice box, lockers fitted with custom lid, stainless steel gas spring actuator, full length stainless steel piano hinge and lockable custom flush latches
- 48 gallon molded into transom bait tank
- Cockpit scuppers
- Courtesy lighting under gunwales, new LED lights 2017
- Door to engine room with ladder from cockpit
- Fish boxes, large capacity, insulated with macerator pump out system
- Gunwale padding, high density foam, white vinyl covered, mounted on tough 1/2" polyethylene backing board, new 2017
- Hatches, lazarette and fish boxes (2), heavy duty with gaskets and piano hinges
- Rod-gaff racks starboard
- 5 rod holders
- 2 storage boxes under gunwale
- Transom door with top gate, extreme duty polished stainless steel hardware

- Washdown, fresh water, starboard side
- Washdown, salt water, port side
- Pompanette teak 6 pin rocket launcher

Deck

- Custom anchor roller assembly
- 4 custom spring line cleats
- 2 forward mooring cleats, stainless steel
- Molded fiberglass using polyester resin, bi-axial stitched fabric reinforcement and vacuum bagged core-cell construction
- Molded in non-skid surface
- Premium quality molded-in white gelcoat finish
- Saltwater wash down forward in custom molded locker
- Stern cleats, stainless steel
- Stern hawse pipes, stainless steel
- Windlass, DC electric remote switch at helm and deck switches
- Windshield washer (3), fresh water supplied
- Windshield wipers, (3) self parking with heavy duty pantograph arms
- Windshield, tinted, heavy welded aluminum, construction finished, includes electrically actuated vent

Pipewelder's Tuna Tower Package

- Tuna Tower Molded Top Single Rail
- Tower Sunshade 72" Molded Top
- Bench Seat, Fixed with Backrest
- Control Box, 50" - Lo-Pro-Cloud
- Flush mounted compass
- MAN Controls and Steering
- Anchor Run Lights
- One-Piece Molded Standing Platform
- 4 in 1 Linear Lights
- Radar Pod, FIG - Extended-Rod Locker-T'Reels
- Miya Epoch USB-9 teaser Reels
- Stand-Off Antenna
- Rod Locker, Overhead, Installed in Hardtop
- 12 Rod Holders
- Handrail, Molded Lip on Sides of Hardtop
- Double Spreader Outrigger, Bridge Release, Tele Arm \
- Center Rigger - Tapered Pole
- 3-Side Strataglass Enclosure

- U-Zipper Cut Outs
- Aft Curtain Enclosure
- LEDNAV Lights Red/Green
- LEDNAV Stem Lights - Molded
- Recessed LED Lights - Tri-Color under sunshade and standing platform
- Tower and riggers clear coated
- New seat and belly band cushions 2017

Electrical

- 15 KW Westerbeke freshwater-cooled diesel generator with sea-water strainer, remote start and gauge panel, water lift muffler, safety shut down system with 1,685 hours and new exhaust riser, 2017
- 50 ft. shore power cord with retractable Glendinning cablemaster 220V, 50 amp
- Battery charger, 50 amp with thermal cut out
- Battery on/off switches, vapor proof
- Bonding system
- Cable television connection
- Central vacuum
- Custom AC electrical distribution panel with line voltage and load meter, reverse polarity light
- Custom DC electrical distribution panel with battery voltage and load meters
- Electronic supply at helm, 24 VDC and 12 volt at 50 amps
- Engine room lights, DC and AC
- Ground fault circuit interrupter receptacles protected throughout boat
- Horn
- Interior lighting, DC and AC
- Telephone shore connection with one outlet, salon

Hull

- Bi-axial stitched fabric reinforcement
- Blue boot stripe
- Bottom paint complete preparation - 2 coats epoxy, 2 coats anti-fouling paint, blue standard
- Core-cell core from knuckle to sheer, vacuum bagged
- Hull finished inside with white polyester gelcoat
- Molded fiberglass construction with superior ISO?NPPG gelcoat finish and premium vinylster resins throughout
- Solid fiberglass bottom construction
- Stainless steel rub strip on face of white high density PVC rub rail
- Trim tabs, fully recessed
- 2 green LED underwater lights

Mechanical

- Bilge pumps, four automatic/manual and one automatic
- Bonding system with transom zinc plate
- Braided hose sleeves on all nylon hydraulic lines
- Bright white bilge and engine room, gelcoat finish
- Bronze high speed water intake scoops with integral sea water strainers
- Double constant torque stainless steel clamps on engine exhaust hoses
- Double hose clamps on all hose fittings where possible, stainless steel
- Electric fuel priming pumps
- Electronic controls with engine synchronizer, trolling valves and backup controls
- Engine alarm system
- Engine driven emergency bilge pump Y-valve on one engine
- Engine room blowers (2) DC
- Engine room ventilation fan, AC
- Fire extinguishing system, automatic
- Fresh water cooling on main engines Fresh water hose bib, quick disconnect
- Fresh water pump, AC, with backup fresh water pump.DC
- High water bilge alarms (3)
- Holding tank, with warning lights, macerator and dockside discharge
- Metal braided fire-retardant fuel lines
- Oil change system, mains, generator and transmission
- Power steering
- Propeller shafts, high strength stainless steel, 2.5 inch diameter, double taper, couplers
- Propellers,. 4 blade Veems, new in Oct. 2016
- Rudders, high strength bronze, installed with high-load bearings insuring low friction and precise control
- Sea cocks, UL approved for marine application, bronze, fitted on all thru-hulls below water line
- Stuffing boxes, drip less lip seal type
- Water heater, stainless steel, AC, 11 gallon

Options

- A/C 30,000BTU on Helm Deck
- Bait Tank Window
- Cockpit Freezer 110v
- Distribution Panel for Electronic
- Generator 15kw
- Hand Held Shower in C pit
- PropSmith Propeller Installation and Removal Tool
- Teak in lieu of Carpet
- Decor Accessories Package

Remarks

The "Sea Wheels" is an excellent example of a two owner well kept 45' Cabo, the current owner's fastidious maintenance shows. The boat will not disappoint, come inspect for yourself.

Exclusions

Owner's personal items, tools and fishing gear.

Exclusions

Owner's personal belongings.

Disclaimer

The Company offers the details of this vessel or yacht in good faith but cannot guarantee or warrant the accuracy of this information nor warrant the condition of the vessel. A buyer should instruct his representatives, agents, or his surveyors, to investigate such details as the buyer desires validated. This vessel or yacht is offered subject to prior sale, price change, or withdrawal without notice.

PHOTOS

Salon



Salon



Salon



Salon



Salon



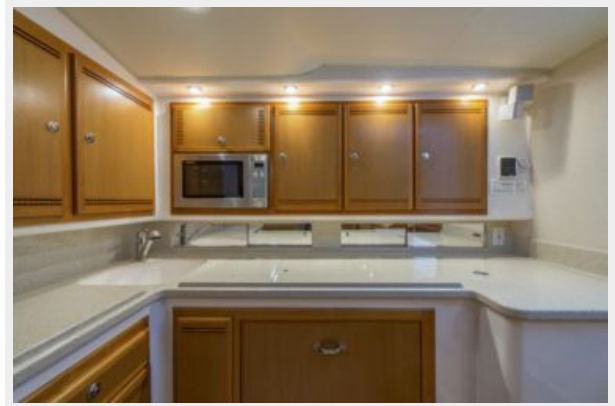
Galley



Galley



Galley



Galley

Galley



Forward Stateroom



Forward Stateroom



Forward Stateroom



Guest Stateroom



Head



Head



Head



Cockpit



Cockpit



Cockpit



Cockpit



Cockpit



Cockpit



Cockpit



Cockpit



Cockpit



Helm



Helm



Helm



Helm



Helm



Helm



Helm



Helm



Helm

Helm



Helm



Helm



Helm



Engine Room



Engine Room



Engine Room



Engine Room



Engine Room



Engine Room



Engine Room



Engine Room



Engine Room



Engine Room



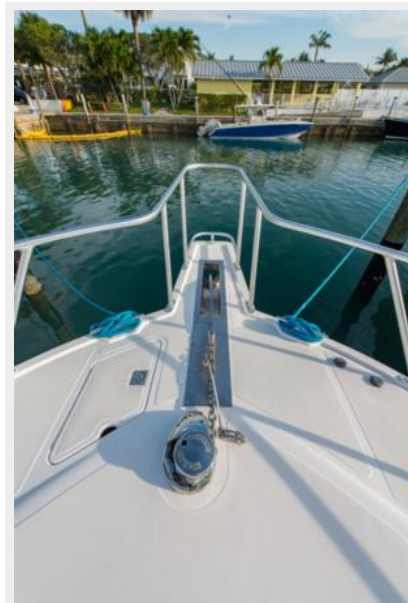
Engine Room



Engine Room



Bow



Bow



Bow



Sea Wheels

Sea Wheels



Sea Wheels



Sea Wheels



Sea Wheels



Sea Wheels



CONTACTS

Andrey Shestakov, leading yacht broker of the sales department of Shestakov Yacht Sales Inc. Shestakov Yacht Sales Inc., the official representative of the Miami/Fort Lauderdale FL headquarters.

Contact details

Email:
andrey@shestakovyachtsales.com

Web: shestakovyachtsales.com/en/

Telephones

USA: **+1(954)274-4435**

Office hours

Monday – Saturday: **9:00 - 21:00 EDT**

Sunday: **closed**

Address



Harbour Towne Marina, 850 NE 3rd St,
STE 213, Dania, FL 33004