

SEAFARER — WESTPORT



Судостроитель: WESTPORT

Год постройки: 1999

Модель: Моторная яхта

Цена: **ЦЕНА ЯХТЫ ПО ЗАПРОСУ**

Местонахождение: United States

Длина общая: 112' 0" (34.14m)

Ширина: 23' 9" (7.24m)

Мин. осадка: 5' 6" (1.68m)

Крейс. скорость: 19 Kts. (22 MPH)

Макс. скорость: 24 Kts. (28 MPH)

Купить **SEAFARER — WESTPORT** а также выбрать подходящую вам яхту из нашего каталога яхт вам поможет опытный яхтенный брокер Андрей Шестаков. На сегодняшний день компания **Shestakov Yacht Sales Inc.** имеет большое количество яхт в собственном списке продаж, а также тесно сотрудничает со всеми крупными яхтенными производителями по всему миру.

Для того чтобы купить яхту **SEAFARER — WESTPORT** а также проконсультироваться по любому вопросу связанному с покупкой, продажей, чартером яхт позвоните по телефону **+7(918)465-66-44**.

ОГЛАВЛЕНИЕ

ОГЛАВЛЕНИЕ	2
ХАРАКТЕРИСТИКИ	5
Обзор	5
Основная информация	5
Размеры	5
Скорость, вместимость и масса	5
Размещение	5
Корпус и палуба	6
Информация о двигателе	6
ПОДРОБНОЕ ОПИСАНИЕ	7
Accommodations	7
Galley	7
Main Salon & Dining Area	8
Master Stateroom, Amidship	8
VIP Guest Stateroom, Forward	9
Queen Guest Stateroom, Port	9
Twin Guest Stateroom	10
Captains Cabin & Crew Quarters, Aft	10
Pilothouse Equipment	11
Electronics & Navigational Equipment	11
Flybridge Equipment	11
Deck Equipment	12
Electrical Equipment	13
Engine/Mechanical Equipment	13
Refit & Updates, 2015 - 2016	15
Исключения	16
Отказ от ответственности	16
ФОТОГРАФИИ	17

Main Salon	17
Main Salon	17
Formal Dining Area	17
Lower Companionway	17
Master Stateroom	17
Master Stateroom	17
His & Her Master Bath	18
Master Stateroom	18
VIP Stateroom, Forward	18
VIP Guest Stateroom	18
Queen Guest Stateroom	18
Twin Stateroom	18
Pilothouse	19
Pilothouse	19
Galley	19
Galley	19
Aft Deck	19
Aft Deck	19
Flybridge	20
Flybridge	20
Flybridge	20
Flybridge Jacuzzi	20
Flybridge Jacuzzi	20
Engine Room	20
Layout	21
КОНТАКТЫ	22
Контактная информация	22
Телефоны	22
Время работы	22

Адрес

22

ХАРАКТЕРИСТИКИ

Обзор

Основная информация

Тип судна: Моторная яхта	Подкатегория: Raised Pilothouse
Модельный год: 1999	Год постройки: 1999
Год обновления: 2013	Вид обновления: Major exterior/interior replacements & refinishing
Страна: United States	Верх: Hardtop
Открытая палуба мостика: Да	

Размеры

Длина общая: 112' 0" (34.14m)	Ширина: 23' 9" (7.24m)
Мин. осадка: 5' 6" (1.68m)	Длина привального бруса: 112' 0" (34.14m)

Скорость, вместимость и масса

Крейс. скорость: 19 Kts. (22 MPH)	Макс. скорость: 24 Kts. (28 MPH)
Вместимость воды: 1075 Gallons	Объем топливного бака: 5500 Gallons

Размещение

Всего кают: 4	Спальные места: 8
Всего ком. состава: 5	Койки экипажа: 4
Спальных мест экипажа: 2	

Корпус и палуба

Материал корпуса: Fiberglass

Информация о двигателе

Двигатели: 2

Производитель: DDC/MTU

Модель: 16V-2000 DDEC

Тип топлива: Diesel

ПОДРОБНОЕ ОПИСАНИЕ

Accommodations

Sleeps eight in four staterooms. There are four owner and guest staterooms including five guest heads. Crew accommodations include four berths, two heads and two showers. This Westport 112' represents a rare opportunity to own the industry's most successful composite hull over 100' ever built. With excellent performances and low maintenance costs, the 112 series offers long range at displacement speeds, or a top of 21 knots. Her sea keeping and livability are unmatched by any other builder in her class.

She offers a large salon with walk-behind step-down bar to port and formal dining in the forward section of the salon. There are custom buffet cabinets for storage of formal dinnerware and 50-bottle wine cooler. From the salon to the aft deck you enter through the large stainless steel, counter balance double doors. U-shaped aft deck seating and occasional chairs facing aft for ultimate viewing at anchorage or a marina. Going forward and to starboard is the large country kitchen style galley.

The galley offers a pull-out pantry and offers a full array of new top-end appliances for maximum entertaining. A very open feeling with again a very casual raised U-shaped seating and two occasional bar stools to be pulled over for additional seating. Granite countertops from the salon have been carried throughout the main deck including the galley, dinette, forward countertops. The cabinets and other doors are solid wood done in long-end, grain-effect, a very costly manner of joinery (butcher block) in lieu of the typical manufacturer of hollow doors with veneer skins.

The VIP guest stateroom is located all the way forward and down to lower the owners to be midship, guest to be forward and crew aft, utilizing the entire yacht.

Galley

The galley is the desirable country-kitchen style with a raised large dinette which seats 8-10 comfortably with panoramic viewing through the large windows. The galley is right next to the dinette to offer a casual feeling and sometimes exhibition style food preparation, excellent layout for informal dining, mirror between forward cabinets; recessed ceiling over galley work area; built-in settee; upper and lower pull out pantry.

- Granite countertops
- GE Induction cooktop
- Fisher & Paykel drawer dishwasher
- Sub-Zero refrigerator/freezer
- GE 30" convection oven
- GE Microwave oven w/vent hood
- Insinkerator garbage disposal

- Stainless steel Kohler extra deep sink
- Samsung 42" TV
- Amtico flooring

Main Salon & Dining Area

Stainless steel, framed sliding door Custom built-in sectional sofa Built-in cabinets w/ granite tops Duette blinds w/custom blind pocket Vertiglide blinds in aft salon Salon bar w/granite top, sunken floor, icemaker, storage, rope lighting under counter edge & base Entertainment center w/lift for TV, audio & video storage Wine chiller Dining table w/ (8) dining chairs Custom etched glass behind dining table Built-in buffets w/ custom storage for china, glassware & stemware Vaulted overhead dining fixture Custom Majilite headliner Duette blinds w/custom blind pocket Vertiglide blinds in aft salon Day Head & Foyer: Royal Flush head Mirrored overhead Vanity w/granite top, china sink & overhead light fixture Crema Marfil marble tile flooring & wainscoting

Master Stateroom, Amidship

- Solid wood double doors entry
- King berth w/drawer storage below
- Mirrored bulkhead / headboard
- Custom overhead treatment
- Full dresser drawers to port
- Walk-in cedar-lined closet
- Recessed Halogen lighting, reading lights
- (2) Sconce lights
- Mirrors on bulkhead above headboard and dressers
- Clear mirror on wardrobe door
- Lighted vanity w/make-up mirror
- Walk-in wardrobe, aromatic cedar-lined w/ automatic light
- Duette window treatments in custom blind pocket
- Opening portlights w/screens & privacy covers
- (2) Nightstands w/ drawers
- Built-in 12-drawer dresser
- Entertainment center w/ LG LCD 32" TV w/Yamaha receiver & DVD
- Custom upholstered settee Master His & Her Bath:
- (2) Headhunter Royal Flush heads
- Crema Marfil marble tile shower w/Grohe fixtures
- Tempered glass partition between tub and shower
- Kohler Whirlpool tub w/ Kohler fixtures
- (2) Kohler sinks w/ Grohe fixtures
- (4) Mirror medicine cabinets
- Mirrored headliner

- Recessed Halogen lighting
- Crema Marfil marble flooring
- Crema Marfil marble countertops

VIP Guest Stateroom, Forward

- Queen berth w/mirrored headboard, recessed lighting & drawer storage below
- Recessed halogen room & reading lights
- Indirect rope accent lighting under berth and above soffit
- Mirrors on forward bulkhead above headboard
- Clear full length mirrors on wardrobe door
- Lighted vanity mirror above vanity/desk
- Walk-in wardrobe, aromatic cedar-line closet with automatic light
- Stainless closet rod and cedar shelf with keeper
- Bomar hatch/skylight to foredeck with sliding screen and shade,
- Soffit for lighting
- (2) Built-in nightstands w/ bookcase at headboard
- Built-in vanity/desk
- Entertainment center w/ mirrored face & 4-drawer dresser
- Custom upholstered settee
- LG LCD 26" TV & Panasonic Blue Ray player
- Guest Bath:
- Headhunter Royal Flush head
- Shower w/tempered glass door
- Grohe fixtures & sealed shower light
- Kohler stainless steel sinks w/Grohe fixtures
- Wall mirror above vanity
- Recessed Halogen lights
- Vanity lighting
- Azrock vinyl flooring
- Ginger hardware

Queen Guest Stateroom, Port

- Queen berth w/storage drawers below
- Mirrored headboard
- Recessed halogen lighting
- Reading lights
- (2) Built-in nightstands
- Built-in 6-drawer dresser
- Clear full-length mirror on wardrobe door
- Cedar-lined wardrobe closet w/automatic light
- Duette window treatments in custom blind pocket

- Opening port light w/ screen & privacy cover, soffit w/ ash trim for lighting
- Entertainment center, Samsung 26" LCD TV & Panasonic Blue Ray player

Twin Guest Stateroom

- Twin berths w/upholstered headboards & drawer storage below
- Mirrors on aft bulkhead above headboard
- Clear full-length mirror on closet w/automatic light
- Duette window treatments w/custom blind pockets
- Opening port lights w/screen & privacy cover
- Built-in 3-drawer dresser
- Built-in 3-drawer movable nightstands
- Entertainment center w/ Samsung 26" LG LCD TV & Panasonic Blue Ray Guest Head:
- Marble vanity w/ backsplash
- Mirrored medicine cabinet
- Headhunter Royal Flush head
- Shower w/ tempered glass shower door & Grohe fixtures
- Kohler sink w/Grohe fixtures
- Wall mirror above vanity
- Recessed halogen lighting
- Azrock vinyl flooring

Captains Cabin & Crew Quarters, Aft

- Total of (3) crew berths plus captain's cabin w/full size berth
- (1) Twin berths in crew area w/ storage below
- New crew heads
- Recessed lighting
- Clear full-length mirrors on wardrobe closets w/ automatic lights
- White corian countertops
- Captain's desk
- New flooring
- (2) Frigidaire Affinity Washers & Frigidaire Dryers
- (2) Chest freezer Captain's Cabin:
- Full size berth w/drawer storage
- 22" Sharp Flat Screen TV & JVC stereo
- Galley Maid head
- Shower w/tempered glass door
- Stainless steel sink
- Wall mirror above vanity
- Low voltage recessed room lights
- Vanity lighting

- Azrock vinyl flooring
- Vanity w/corion countertops
- Mirrored medicine cabinet

Pilothouse Equipment

- 24" Stainless steel destroyer type wheel
- Electronic engine controls
- Detroit Diesel DDEC engine instrument panel
- Stain-resistant carpeting
- Majilite bulkheads
- Majilite headliner
- Black Spinney leather control panel w/ padded panels
- Chart drawers under settee
- Leather on settee
- Pompanette Helm Chair
- Sliding hatch to flybridge
- Formica counters with ash trim
- Glass top table with ash trim
- Mirror on aft bulkhead
- Built-in bookcase
- HCVA w/ custom diffuser on aft bulkhead

Electronics & Navigational Equipment

- Garmin 25KW Radar
- Furuno Radar
- Garmin 5212s (Bridge & Pilothouse)
- Northstar 6100i N2
- (2) Greenmarine Screens
- Simrad AP28 Autopilot
- Furuno Autopilot
- B&G HS 2000
- (2) Icom IC-M504 VHF's (Pilothouse & Bridge)
- Intellion 8 Sat TV Dish
- PC w/flush flat screens chart plotter & Nobeltec software
- Sea Tel V-Sat

Flybridge Equipment

- Custom non-skid decks

- Welded aluminum arch type mast w/electronics, anchor light & deck lighting
- Wet bar w/new counter tops, hot/cold water, GE refrigerator & (5) bar stools
- TV/phone jacks
- GE refrigerator
- 24" stainless steel destroyer type wheel
- Richie compass
- CD player & transom ladder, chocks for life raft & tender
- Platinum Yacht custom helm seats w/footrests
- Khalenberg air horns
- Jacuzzi w/sun pad & storage below
- Molded settee w/cushions & hinged seating for storage below
- Stainless stern flag pole
- (2) Wing stations w/electronic engine controls w/synchronizer, jog lever, bow thruster control & rudder angle indicators
- Helm station w/engine controls, engine instrumentation & electronics
- Clarion Marine AM/FM receiver w/ CD player
- Custom Venturi ¼" Lexan windshield in black aluminum frame
- Full fixed top which goes back to arch
- EZ2CY 3-sided enclosure

Deck Equipment

- Solid 2" PVC (upper/lower guard) w/stainless half oval rub strip
- Bomar hatch with screen for forward guest stateroom
- Stainless sliding hatch to flybridge
- Freeman cast aluminum round bow deck hatch to chain locker
- Hatch from aft deck to flybridge
- (2) Cast chromed bronze Westport step plates located at side boarding doors
- Frameless adhesive bonded windows with 1/4" Solar Gray tempered glass, forward pilothouse windows are 3/8" tempered clear glass
- Stainless steel rails at transom stairs, both port and starboard, main house above salon windows, stern, flybridge & bow
- Non-skid on all exterior decks
- Forward sun lounge w/ cushions & covers
- Stainless steel anchor
- 350' 5/8" anchor chain
- 5/8" chrome chain stopper
- Custom stainless steel bow roller w/ VHMW roller
- Maxwell 4500# hydraulic winch
- Automatic anchor chain wash down system
- Fiberglass cap rail w/polyurethane finish
- Fiberglass bulwarks w/polyurethane finish
- Bronze thru-hull fittings w/ bronze ball valves & bonding

- Freeman elliptical port lights opening w/screens & privacy covers
- (2) Maxwell 2500#
- 24V DC capstans
- (6) 60' nylon dock lines
- (6) 18" aluminum cleats
- (6) Stainless steel Hawse eyes forward, (2) at swim grid plus (2) additional cleats at stern for vessel on shore boat tie off
- (8) 36" inflatable fenders with 3/8" nylon line
- (8) Fender cleats (four per side) with stainless steel rub rail
- (2) Large fenders
- (2) Large ball fenders

Electrical Equipment

- Battery charger
- (8) AGM batteries
- Bilge alarm and gray water tank alarm
- (4) Smoke alarms
- Pilothouse chart light
- Crew shower sump indicator
- Lighting at house sides, foredeck, aft deck stairs, aft deck overhead, flybridge deck
- (2) 100 amp Charles Industries isolation transformers w/one step auto voltage adjustment
- Lighting protection w/hull Dyna plate an mast probe
- All staterooms have 110V reading lights & 110V receptacles for table lamps
- Captain/Crew areas have DC reading lights
- Halogen recessed light fixtures
- 24V DC and 110V AC rope lighting
- ACR searchlight
- 100 amp receptacle on aft deck
- 100 amp Glendinning reel in engine room starboard side
- 100' shore cord
- TV and phone outlets
- 100' TV/phone cord located at Glendinning outlet
- 24V DC shower lights
- Vimar/Leviton receptacles and switching throughout
- Aqua Signal navigation lights

Engine/Mechanical Equipment

- Twin MTU 16V-2000 DDEC Diesels IB, 1800HP
- Engine Hours - Port: 11,102 total hrs / 3404 SMOH Engine Hours - Starboard: 11,103 total hrs / 3403 SMOH Engines were rebuilt at 7700 hrs during 2013/14 refit

- DDEC controls
- DDEC synchronizer & underwater exhaust
- Twin Northern Lights 65KW generators
- Generator Hours: P - 5,160 S - 5,162
- Generators were overhauled at 3,500 hours during the 2013/14 refit
- Hydraulic bow thruster w/ 4-station controls
- Naiad stabilizers w/ 9 ft fins & 2nd station control
- Naiad stabilizers w/ 9 ft fins & 2nd station control
- Spot Zero 1800 GPD watermaker
- Jastrom CCO commercial steering w/ dual engine driven pumps
- New MSD waste water treatment system
- Vibration dampers
- All thru hulls are bonded & connected to transom zincs & shaft wipers
- Zinc anodes
- Marine Air 15-ton chilled water system w/Aqua Air controls & air handlers
- (8) Bilge pumps
- Exhaust system
- Chilled water air conditioning system
- (2) AC chillers installed in the engine room
- Hot and cold water shower on aft deck
- Holding tank
- Hot water heater
- Fresh water wash down system
- Emergency bilge pump
- Sink w/ hot & cold fills w/ dual fill vent pipes vented overboard for fast filling
- Sea Pro 300 fuel filter for each main engine
- Separ 2005 MK for each generator w/ vacuum gauge
- Fuel gauges
- Fuel transfer system w/ flow meter & timer
- Halon fire system w/ auto & manual controls
- Lube oil change system
- Cast urethane foil shape rudders w/ stainless stocks
- Rudder posts
- Nibral 5-blade custom propellers
- 4" Shafts
- Shaft log & packing glands
- Cast bronze struts
- 18' Self-coiling air hose w/quick disconnect
- Stainless steel work bench with 4" vice
- Removable Diamond tread aluminum plate floor covering
- 12-drawer tool box w/ tools
- High water alarm
- Spare wheels

Refit & Updates, 2015 - 2016

- New main engine mounts
- New main engine transmission couplings
- New engine room intake fan and frequency drive
- New engine room exhaust fan and frequency drive
- Black water discharge pump (120 vac) rebuilt w/ all new hoses
- New shore power breaker for stbd chord enclosure & 3-Phase breaker
- New bottom paint and prop speed
- Exterior window frames and mask painted
- Painted transom
- Flybridge non-skid painted
- Boat deck non-skid painted
- Stabilizer control heads sanded to bare metal & repainted
- Handrail bow removed and re-bedded
- New rudder bearings
- New Fisher-Paykel dishwasher
- New Sub-Zero refrigerator in crew mess
- New carpet throughout vessel
- New pilothouse upholstered console
- Re-upholstered sofa in salon, all dining chairs & love seat in master stateroom
- New 65" TV in master stateroom
- New 21" TV in crew mess
- New 32" TV in captains cabin
- Captains cabin berth upgraded to queen w/custom mattress
- Annual inspection and re-certification of all fire equipment
- New Aqua Air Chiller system
- New MSD waste/sewer system (2017)
- New Aqua Air 5-ton chillers (3 units), new control panel, new pump, drip pan, chilled water pump
- (3) New air handlers for salon
- Fuel reel 100' refueling hose for diesel tow behind
- (4) New membranes for Watermaker
- (2) New membranes for Spot Zero
- New lighting in engine room
- All overhead lighted converted to new LED lighting
- Upgrades and repairs to the exhaust system
- New SART
- New AIS B Furuno FA-50
- Rebuilt Garmin Radar w/new parts
- New Radar Furuno 8255 with ARPA
- New thruster control switches
- New jog control switches
- New Simrad compass

- (2) New Icom 506 VHF's

Исключения

При продаже яхты исключаются личные вещи владельца.

Отказ от ответственности

Компания предоставляет описание судна или яхты добросовестно, но не может гарантировать точность этой информации, а также не ручается за техническое состояние. Покупатель должен проинструктировать своих агентов или оценщиков исследовать представленную информацию более подробно, по собственному желанию. Продажа судна или яхты, изменение цены или снятие с продажи будет происходить без предварительного уведомления.

ФОТОГРАФИИ

Main Salon



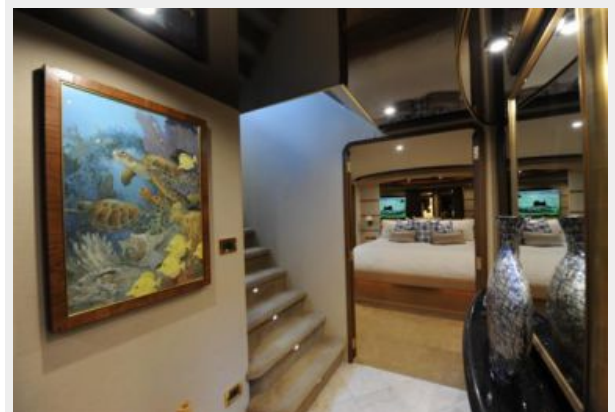
Main Salon



Formal Dining Area



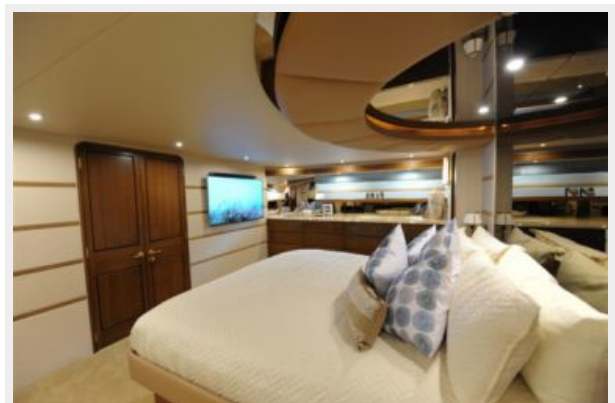
Lower Companionway



Master Stateroom



Master Stateroom



Master Stateroom



His & Her Master Bath



VIP Guest Stateroom



VIP Stateroom, Forward



Queen Guest Stateroom



Twin Stateroom



Pilothouse



Pilothouse



Galley



Galley



Aft Deck



Aft Deck



Flybridge



Flybridge



Flybridge



Flybridge Jacuzzi



Flybridge Jacuzzi



Engine Room



Layout



КОНТАКТЫ

Андрей Шестаков (Andrey Shestakov) – ведущий яхтенный брокер отдела продаж яхт и судов компании Shestakov Yacht Sales Inc. Официальный представитель Shestakov Yacht Sales Inc. для русскоговорящих клиентов в центральном офисе компании в Майами/Форт Лодердейл/Флорида/США.

Контактная информация

Email: andrey@shestakovyachtsales.com

Web: shestakovyachtsales.com

Телефоны

Краснодарский край: **+7(918)465-66-44**

США, Майами, Флорида: **+1(954)274-4435**

Время работы

Понедельник – Суббота: **9:00 - 21:00**
EDT

Воскресенье: **Закрито**

Адрес



Harbour Towne Marina, 850 NE 3rd St,
STE 213, Dania, FL 33004