

NOSTROMO — PENDENNIS



Builder: PENDENNIS

Year Built: 2009

Model: Sloop

Price: PRICE ON APPLICATION

Location: Malta

LOA: 98' 6" (30.00m)

Beam: 24' 4" (7.40m)

Max Draft: 12' 8" (3.85m)

Cruise Speed: 9 Kts. (10 MPH)

Max Speed: 12 Kts. (14 MPH)

Our experienced yacht broker, Andrey Shestakov, will help you choose and buy a yacht that best suits your needs **NOSTROMO — PENDENNIS** from our catalogue. Presently, at Shestakov Yacht Sales Inc., we have a wide variety of yachts available on our sale's list. We also work in close contact with all the big yacht manufacturers from all over the world.

If you would like to buy a yacht **NOSTROMO — PENDENNIS** or would like help answering any questions concerning purchasing, selling or chartering a yacht, please call **+1(954)274-4435**

TABLE OF CONTENTS

TABLE OF CONTENTS	2
SPECIFICATIONS	4
Overview	4
Basic Information	4
Dimensions	5
Speed, Capacities and Weight	5
Accommodations	5
Hull and Deck Information	5
Engine Information	5
DETAILED INFORMATION	6
TECHNICAL SPECIFICATIONS	6
Sails	6
Winches	6
Mechanical	6
AUXILIARY MACHINERY	6
Deck Equipment	7
Interior/ Galley/ Laundry	7
Boarding Arrangements	7
Navigation	7
Communication	7
Audio & Visual Equipment	7
Accommodations	8
Tenders	8
Safety & Fire Protection	8
Remarks	8
Exclusions	8
Disclaimer	8
PHOTOS	9

CONTACTS	19
Contact details	19
Telephones	19
Office hours	19
Address	19

SPECIFICATIONS

Overview

Nostramo was launched in Summer 2009 and was the 8th yacht to be constructed by Pendennis from the famed and sophisticated Dubois drawing boards. This 30m / 100ft yacht is constructed from aluminium and boasts an exquisite interior from Redman Whiteley Dixon, which utilises natural walnut and birch woods.

The charter and family friendly layout offers four cabins to accommodate up to nine guests, alongside an elegant saloon offering 180' views out, a large cockpit and huge deck space. *Nostramo's* hull and rig are designed expressly for high performance under sail. *Nostramo* is equally at home under sail or power. With her immense range, she is capable of crossing the Atlantic without refuelling at a full under-power cruising speed of 9 knots.

Nostramo is the ideal combination of strength, performance and comfort and has been maintained at the Pendennis facilities in both Palma and Falmouth including a refit in 2014 encompassing her 5 year Lloyds and MCA surveys, a full vessel exterior re-paint, new electronics and entertainment system package, Other works include Owner cabin modifications and works on the yacht's lighting system. She has benefited from continuous upgrades/works and presents very impressively.

Nostramo is commercially registered for charter and has an excellent reputation for continuing income potential.

Basic Information

Category: Sloop

Sub Category: Performance Sailboat

Model Year: 2009

Year Built: 2009

Refit Year: 2014

Refit Type: Extensive

Country: Malta

Vessel Top: Hardtop

Cockpit: Yes

Dimensions

LOA: 98' 6" (30.00m)

Beam: 24' 4" (7.40m)

Max Draft: 12' 8" (3.85m)

Speed, Capacities and Weight

Cruise Speed: 9 Kts. (10 MPH)

Max Speed: 12 Kts. (14 MPH)

Displacement: 257940.84654 Pounds

Gross Tonnage: 102 Pounds

Water Capacity: 792.516156 Gallons

Holding Tank: 330.215065 Gallons

Fuel Capacity: 2971.935585 Gallons

Fuel Consumption: 5.28344104 Gallons

Accommodations

Total Cabins: 4

Sleeps: 9

Crew Berths: 4

Hull and Deck Information

Hull Material: Aluminum

Deck Material: Teak

Hull Color: Dark Blue

Hull Designer: Dubois

Exterior Designer: Dubois

Interior Designer: Redman Whiteley Dixon

Engine Information

Engines: 1

Manufacturer: Scania

Model: D112 59M 450 hp/331Kw

Engine Type: Inboard

Fuel Type: Diesel

DETAILED INFORMATION

TECHNICAL SPECIFICATIONS

MAIN CHARACTERISTICS Type: Sailing Yacht - Sloop Builder: Pendennis Naval Architect: Dubois Interior Designer: Redman Whiteley Dixon Construction Year: June 2009 Refits: 2011, 2014, 2015 & 2016 Material: Aluminium Classification: Lloyds +100 A1 SSC Yacht G6, LMC, MCA Flag: British Engine: Scania 450hp/331kW < c.5,000 hrs in June 2017 GRT: 102 Displacement: 117 tonnes DIMENSIONS LOA: 30.0 m / 98.4 ft. LWL: 26.1 m / 85.6 ft. Beam: 7.4 m / 24.3 ft. Draught: 3.85 m / 12.6 ft. CAPACITIES Fuel: 11,250 litres Fresh Water: 3,000 litres Grey Water: 480 litres Black Water: 780 litres SPEED & RANGE UNDER POWER Maximum/Cruising Speed (knots): 10 / 9 Range at Cruising Speed: 3,400 nautical miles Consumption (approx.) 20 Lph

Sails

SAILS & RIGGING Spars 2014 Hall Spars, Carbon Fibre Mast and Boom Standing Rigging 2014 Future Fibres PBO Carbon Fibre Rigging Running Rigging Dyneema / Vectran Sail Wardrobe North boom-furling Main North Genoa, Jib, MPS, Storm Staysail and Storm Main Additional set of little used (c.10 hrs use in light winds) 2015 Elvstrom Sails (Main, Genoa & Staysail)

Winches

Foredeck 1 x Harken B990.2 STHSS Mainmast 2 x Harken 1110.3 STHSS Genoa sheet 2 x Harken 1110.3 STHSS Main Sheet 1 x Lewmar CW6000 (captive winch) Main Halyard 1 x Lewmar CW6000 (captive winch) Jib Sheet 2 x Harken 1110.3 STHSS

Mechanical

Engine: Scania D112 59M 450 hp/331Kw Propeller: Hundested 4 blade feathering Thrusters (bow and stern): Lewmar Generators: 1 x 33 kW Northern Lights M1064D 1 x 26 kW Northern Lights M944W c.8,500 hrs on both at June 2017 Electricity: 240 v/50 hz Shore Power: 25 kva 3-phase with inputs from 208 to 480 VAC Chargers: Mastervolt Air Conditioning: 3 x MCW60LP Water Maker: 1 x 4,800 litre/day HEM Water Maker

AUXILIARY MACHINERY

Steering System Lewmar Mamba Fuel Separator & Fliters Racor duplex fuel filter & water separator Fire & Bilge pump Lafert x 2 Batteries: Main service battery bank to provide 1,000 Amp/hr capacity (new in Aug 2015) Emergency 200 amp/hr 24v battery bank Engine start battery bank (200 amp/hr-24v) Generator start battery bank (200 amp/hr-24v)

Deck Equipment

Anchor Windlass 2 x Lewmar 400 AW Hydraulic Windlasses Ground Tackle 2x 140kg Niro Peterson Stainless Steel plough Anchors, each with 150m chain Deck Shower At bathing platform Awning & Hardtop Large Sun Awning / fwd & aft awnings Crane Opacmare SWL 500kg Other: 4 x Teak Directors Chairs & table 4 x Sun Mattresses Full set of Warps & Inflatable Fenders

Interior/ Galley/ Laundry

Saloon: 1 x Wine Cooler Laundry Equipment: 1 x Miele Washer Dryer Galley: 1 x Full Height Fridge 1 x Ice Machine 1 x Miele Cabinet Freezer 1 x Bilge Freezer 1 x Miele Dishwasher 1 x "Quooker" Boiling Water Tap 1 x 5 Hob Double Oven Gaggenau Electric Cooker

Boarding Arrangements

Passarelle: Ezberci hydraulic telescopic passarelle and Hydromar retracting side boarding ladder Swimming Platform Hydraulic transom door, stainless steel swimming ladder Ladders Stainless steel side boarding pilot ladder and stainless steel swim ladder

Navigation

Complete Furuno Navnet 3d Integrated System in Pilot House with Port & Starboard Deck Repeating Stations Wind Instruments Furuno F170 / WX Weather Station Chart Plotter Furuno TZ / Maxsea GPS Furuno Radar Furuno 120nm Echo Sounder Furuno DFFI Magnetic Compass X2 C.Plath Venus Gyro Compass Simrad RGC50 Gyro Repeater Furuno Automatic Pilot Furuno 711C / Wills Ridley Hydraulic System

Communication

SATCOM: Thrane & Thrane FBB500 Furuno Felcon 18 SAT C SSB: Radio Telephone Furuno VHF: Furuno FM 8900s NAVTEX: Furuno NX700 AIS: Furuno FA150 Cellular Phone System: Panasonic Wi-fi: Aruba routers, Yachtspot & 3G Wi-fi throughout vessel Other: Intercom

Audio & Visual Equipment

Saloon: Hi-definition flat screen 3D TV and Blue Ray DVD Player, Ipad docks, Dune/Apple TV movie library (850+ movies) Master Cabin: TV (new 2015), DVD, Ipad docks, Movies (Dune system) Guest Cabins: TV (new 2015), DVD, Ipad docks, Movies (Dune system) Crew Mess: TV (new 2015), DVD, Ipad docks, Movies (Dune system) OFFICE Server (Movies), Maxsea PC, Boat PC & Printer

Accommodations

Guests: 1 x master, 1 x twin with pullman, 1 x double with pullman (convertible to twin) 1 x single, Four guest staterooms accommodate nine guests in comfort. All are equipped with the latest in audio visual entertainment systems including flat screen TV, DVD, Ipad docking station and phone. The single guest cabin is en-suite with a full size bath Crew: 4 x crew in 2 cabins

Tenders

Tender Williams Jet Tender 4.5m (new in 2017) Waterskiing Wakeboard & Waterskis Towables "Donut" Ring (3 man) Fishing Gear Rod. Reel and Gear Other Equipment 2 x Inflatable SUPs, snorkelling equipment, 2 x inflatable kayaks

Safety & Fire Protection

Safety: 2 x 16-Man Life Rafts 4 x Life Buoys 16 x Immersion Suits 16 x Life Jackets (adult & children) 1 x SARTS 2 x EPIRB 2 x Emergency Radios 4 x Line Throwing Apparatus Yanmar Emergency Fire Pump 8 x Fire Extinguishers 2 x BA outfits & 2 x spare bottles Aquasignal searchlight Kahlenberg Fog horn

Remarks

REFIT Full refit at Pendennis during winter 2013/2014, including repaint on topsides and superstructure; all new electronics including instrumentation, communications, chargers and inverters; 5 year Lloyds survey; servicing of pumps, aircon system, refrigeration system, bow and stern thrusters, prop and shaft, main engine and generators; new mast and carbon rigging.

Exclusions

Owner's personal belongings.

Disclaimer

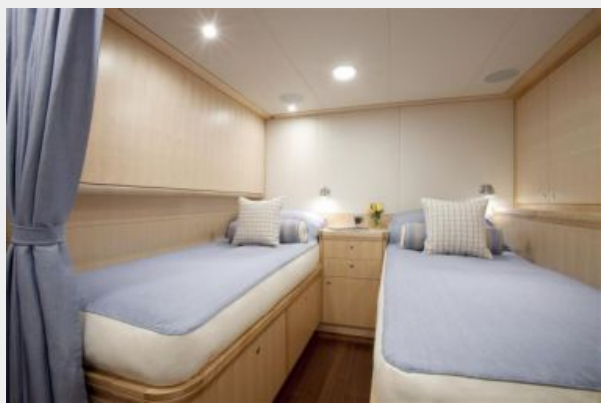
The Company offers the details of this vessel or yacht in good faith but cannot guarantee or warrant the accuracy of this information nor warrant the condition of the vessel. A buyer should instruct his representatives, agents, or his surveyors, to investigate such details as the buyer desires validated. This vessel or yacht is offered subject to prior sale, price change, or withdrawal without notice.

PHOTOS





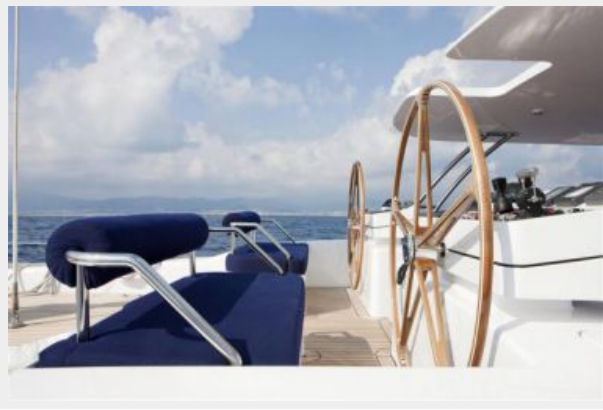




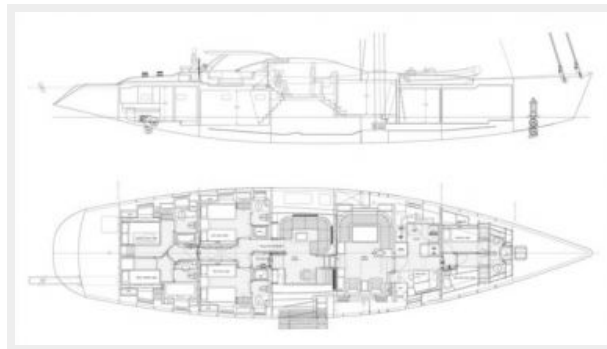












CONTACTS

Andrey Shestakov, leading yacht broker of the sales department of Shestakov Yacht Sales Inc. Shestakov Yacht Sales Inc., the official representative of the Miami/Fort Lauderdale FL headquarters.

Contact details

Email: andrey@shestakovyachtsales.com

Web: shestakovyachtsales.com/en/

Telephones

USA: +1(954)274-4435

Office hours

Monday – Saturday: **9:00 - 21:00** EDT

Sunday: **closed**

Address



Harbour Towne Marina, 850 NE 3rd St,
STE 213, Dania, FL 33004