

## NOSTROMO — PENDENNIS



**Судостроитель:** PENNENNIS

**Год постройки:** 2009

**Модель:** Sloop

**Цена:** **ЦЕНА ЯХТЫ ПО ЗАПРОСУ**

**Местонахождение:** Malta

**Длина общая:** 98' 6" (30.00m)

**Ширина:** 24' 4" (7.40m)

**Макс. осадка:** 12' 8" (3.85m)

**Крейс. скорость:** 9 Kts. (10 MPH)

**Макс. скорость:** 12 Kts. (14 MPH)

Купить **NOSTROMO — PENDENNIS** а также выбрать подходящую вам яхту из нашего каталога яхт вам поможет опытный яхтенный брокер Андрей Шестаков. На сегодняшний день компания **Shestakov Yacht Sales Inc.** имеет большое количество яхт в собственном списке продаж, а также тесно сотрудничает со всеми крупными яхтенными производителями по всему миру.

Для того чтобы купить яхту **NOSTROMO — PENDENNIS** а также проконсультироваться по любому вопросу связанному с покупкой, продажей, чартером яхт позвоните по телефону **+7(918)465-66-44**.

# ОГЛАВЛЕНИЕ

---

ОГЛАВЛЕНИЕ	2
ХАРАКТЕРИСТИКИ	4
Обзор	4
Основная информация	4
Размеры	5
Скорость, вместимость и масса	5
Размещение	5
Корпус и палуба	5
Информация о двигателе	6
ПОДРОБНОЕ ОПИСАНИЕ	7
TECHNICAL SPECIFICATIONS	7
Sails	7
Winches	7
Mechanical	7
AUXILIARY MACHINERY	7
Deck Equipment	8
Interior/ Galley/ Laundry	8
Boarding Arrangements	8
Navigation	8
Communication	8
Audio & Visual Equipment	8
Accommodations	9
Tenders	9
Safety & Fire Protection	9
Remarks	9
Исключения	9
Отказ от ответственности	9
ФОТОГРАФИИ	10

---

КОНТАКТЫ	20
Контактная информация	20
Телефоны	20
Время работы	20
Адрес	20

# ХАРАКТЕРИСТИКИ

## Обзор

*Nostromo* was launched in Summer 2009 and was the 8<sup>th</sup> yacht to be constructed by Pendennis from the famed and sophisticated Dubois drawing boards. This 30m / 100ft yacht is constructed from aluminium and boasts an exquisite interior from Redman Whiteley Dixon, which utilises natural walnut and birch woods.

The charter and family friendly layout offers four cabins to accommodate up to nine guests, alongside an elegant saloon offering 180' views out, a large cockpit and huge deck space. *Nostromo's* hull and rig are designed expressly for high performance under sail. *Nostromo* is equally at home under sail or power. With her immense range, she is capable of crossing the Atlantic without refuelling at a full under-power cruising speed of 9 knots.

*Nostromo* is the ideal combination of strength, performance and comfort and has been maintained at the Pendennis facilities in both Palma and Falmouth including a refit in 2014 encompassing her 5 year Lloyds and MCA surveys, a full vessel exterior re-paint, new electronics and entertainment system package, Other works include Owner cabin modifications and works on the yacht's lighting system. She has benefited from continuous upgrades/works and presents very impressively.

*Nostromo* is commercially registered for charter and has an excellent reputation for continuing income potential.

## Основная информация

**Тип судна:** Sloop

**Подкатегория:** Представительская парусная яхта

**Модельный год:** 2009

**Год постройки:** 2009

**Год обновления:** 2014

**Вид обновления:** Extensive

**Страна:** Malta

**Верх:** Hardtop

**Кубрик:** Да

## Размеры

**Длина общая:** 98' 6" (30.00m)

**Ширина:** 24' 4" (7.40m)

**Макс. осадка:** 12' 8" (3.85m)

## Скорость, вместимость и масса

**Крейс. скорость:** 9 Kts. (10 MPH)

**Макс. скорость:** 12 Kts. (14 MPH)

**Водоизмещение:** 257940.84654 Pounds

**Чистый вес:** 102 Pounds

**Вместимость воды:** 792.516156 Gallons

**Вместимость сточного бака:** 330.215065 Gallons

**Объем топливного бака:** 2971.935585 Gallons

**Расход топлива:** 5.28344104 Gallons

## Размещение

**Всего кают:** 4

**Спальные места:** 9

**Койки экипажа:** 4

## Корпус и палуба

**Материал корпуса:** Aluminum

**Материал палубы:** Teak

**Цвет корпуса:** Dark Blue

**Дизайнер корпуса:** Dubois

**Дизайнер экстерьера:** Dubois

**Дизайнер интерьера:** Redman Whiteley Dixon

## Информация о двигателе

---

**Двигатели:** 1

**Производитель:** Scania

**Модель:** D112 59M 450 hp/331Kw

**Тип двигателя:** Inboard

**Тип топлива:** Diesel

---

# ПОДРОБНОЕ ОПИСАНИЕ

---

## TECHNICAL SPECIFICATIONS

---

MAIN CHARACTERISTICS Type: Sailing Yacht - Sloop Builder: Pendennis Naval Architect: Dubois Interior Designer: Redman Whiteley Dixon Construction Year: June 2009 Refits: 2011, 2014, 2015 & 2016 Material: Aluminium Classification: Lloyds +100 A1 SSC Yacht G6, LMC, MCA Flag: British Engine: Scania 450hp/331kW < c.5,000 hrs in June 2017 GRT: 102 Displacement: 117 tonnes DIMENSIONS LOA: 30.0 m / 98.4 ft. LWL: 26.1 m / 85.6 ft. Beam: 7.4 m / 24.3 ft. Draught: 3.85 m / 12.6 ft. CAPACITIES Fuel: 11,250 litres Fresh Water: 3,000 litres Grey Water: 480 litres Black Water: 780 litres SPEED & RANGE UNDER POWER Maximum/Cruising Speed (knots): 10 / 9 Range at Cruising Speed: 3,400 nautical miles Consumption (approx.) 20 Lph

## Sails

---

SAILS & RIGGING Spars 2014 Hall Spars, Carbon Fibre Mast and Boom Standing Rigging 2014 Future Fibres PBO Carbon Fibre Rigging Running Rigging Dyneema / Vectran Sail Wardrobe North boom-furling Main North Genoa, Jib, MPS, Storm Staysail and Storm Main Additional set of little used (c.10 hrs use in light winds) 2015 Elvstrom Sails (Main, Genoa & Staysail)

## Winches

---

Foredeck 1 x Harken B990.2 STHSS Mainmast 2 x Harken 1110.3 STHSS Genoa sheet 2 x Harken 1110.3 STHSS Main Sheet 1 x Lewmar CW6000 (captive winch) Main Halyard 1 x Lewmar CW6000 (captive winch) Jib Sheet 2 x Harken 1110.3 STHSS

## Mechanical

---

Engine: Scania D112 59M 450 hp/331Kw Propeller: Hundested 4 blade feathering Thrusters (bow and stern): Lewmar Generators: 1 x 33 kW Northern Lights M1064D 1 x 26 kW Northern Lights M944W c.8,500 hrs on both at June 2017 Electricity: 240 v/50 hz Shore Power: 25 kva 3-phase with inputs from 208 to 480 VAC Chargers: Mastervolt Air Conditioning: 3 x MCW60LP Water Maker: 1 x 4,800 litre/day HEM Water Maker

## AUXILIARY MACHINERY

---

Steering System Lewmar Mamba Fuel Separator & Fliters Racor duplex fuel filter & water separator Fire & Bilge pump Lafert x 2 Batteries: Main service battery bank to provide 1,000 Amp/hr capacity (new in Aug 2015) Emergency 200 amp/hr 24v battery bank Engine start battery bank (200 amp/hr-24v) Generator start battery bank (200 amp/hr-24v)

---

## Deck Equipment

---

Anchor Windlass 2 x Lewmar 400 AW Hydraulic Windlasses Ground Tackle 2x 140kg Niro Peterson Stainless Steel plough Anchors, each with 150m chain Deck Shower At bathing platform Awning & Hardtop Large Sun Awning / fwd & aft awnings Crane Opacmare SWL 500kg Other: 4 x Teak Directors Chairs & table 4 x Sun Mattresses Full set of Warps & Inflatable Fenders

---

## Interior/ Galley/ Laundry

---

Saloon: 1 x Wine Cooler Laundry Equipment: 1 x Miele Washer Dryer Galley: 1 x Full Height Fridge 1 x Ice Machine 1 x Miele Cabinet Freezer 1 x Bilge Freezer 1 x Miele Dishwasher 1 x "Quooker" Boiling Water Tap 1 x 5 Hob Double Oven Gaggenau Electric Cooker

---

## Boarding Arrangements

---

Passarelle: Ezberci hydraulic telescopic passarelle and Hydromar retracting side boarding ladder Swimming Platform Hydraulic transom door, stainless steel swimming ladder Ladders Stainless steel side boarding pilot ladder and stainless steel swim ladder

---

## Navigation

---

Complete Furuno Navnet 3d Integrated System in Pilot House with Port & Starboard Deck Repeating Stations Wind Instruments Furuno F170 / WX Weather Station Chart Plotter Furuno TZ / Maxsea GPS Furuno Radar Furuno 120nm Echo Sounder Furuno DFFI Magnetic Compass X2 C.Plath Venus Gyro Compass Simrad RGC50 Gyro Repeater Furuno Automatic Pilot Furuno 711C / Wills Ridley Hydraulic System

---

## Communication

---

SATCOM: Thrane & Thrane FBB500 Furuno Felcon 18 SAT C SSB: Radio Telephone Furuno VHF: Furuno FM 8900s NAVTEX: Furuno NX700 AIS: Furuno FA150 Cellular Phone System: Panasonic Wi-fi: Aruba routers, Yachtspot & 3G Wi-fi throughout vessel Other: Intercom

---

## Audio & Visual Equipment

---

Saloon: Hi-definition flat screen 3D TV and Blue Ray DVD Player, Ipod docks, Dune/Apple TV movie library (850+ movies) Master Cabin: TV (new 2015), DVD, Ipod docks, Movies (Dune system) Guest Cabins: TV (new 2015), DVD, Ipod docks, Movies (Dune system) Crew Mess: TV (new 2015), DVD, Ipod docks, Movies (Dune system) OFFICE Server (Movies), Maxsea PC, Boat PC & Printer



---

## Accommodations

---

Guests: 1 x master, 1 x twin with pullman, 1 x double with pullman (convertible to twin) 1 x single, Four guest staterooms accommodate nine guests in comfort. All are equipped with the latest in audio visual entertainment systems including flat screen TV, DVD, Ipad docking station and phone. The single guest cabin is en-suite with a full size bath Crew: 4 x crew in 2 cabins

---

## Tenders

---

Tender Williams Jet Tender 4.5m (new in 2017) Waterskiing Wakeboard & Waterskis Towables "Donut" Ring (3 man) Fishing Gear Rod. Reel and Gear Other Equipment 2 x Inflatable SUPs, snorkelling equipment, 2 x inflatable kayaks

---

## Safety & Fire Protection

---

Safety: 2 x 16-Man Life Rafts 4 x Life Buoys 16 x Immersion Suits 16 x Life Jackets (adult & children) 1 x SARTS 2 x EPIRB 2 x Emergency Radios 4 x Line Throwing Apparatus Yanmar Emergency Fire Pump 8 x Fire Extinguishers 2 x BA outfits & 2 x spare bottles Aquasignal searchlight Kahlenberg Fog horn

---

## Remarks

---

REFIT Full refit at Pendennis during winter 2013/2014, including repaint on topsides and superstructure; all new electronics including instrumentation, communications, chargers and inverters; 5 year Lloyds survey; servicing of pumps, aircon system, refrigeration system, bow and stern thrusters, prop and shaft, main engine and generators; new mast and carbon rigging.

---

## Исключения

---

При продаже яхты исключаются личные вещи владельца.

---

## Отказ от ответственности

---

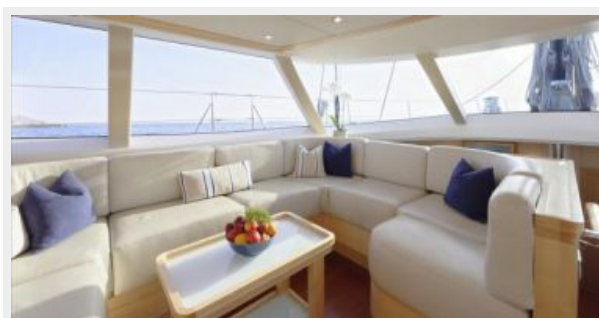
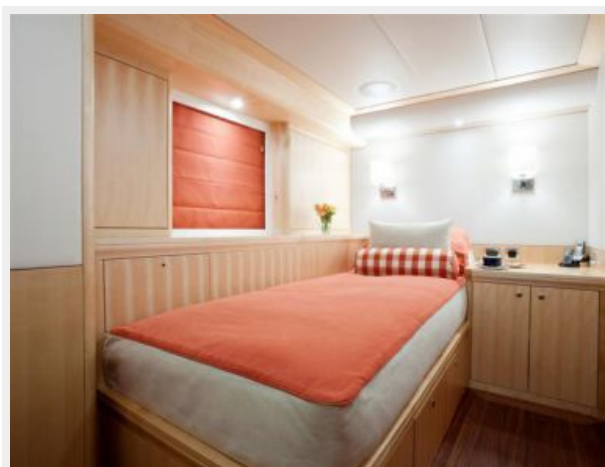
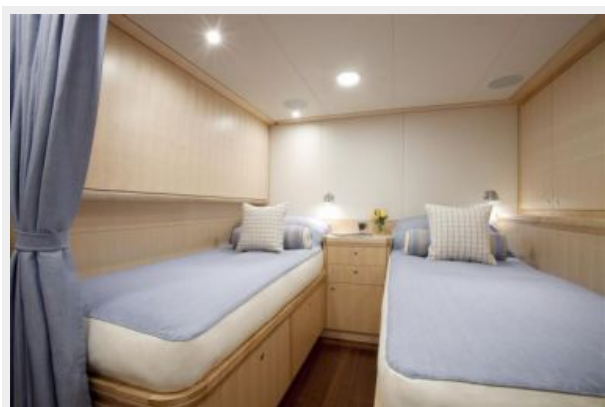
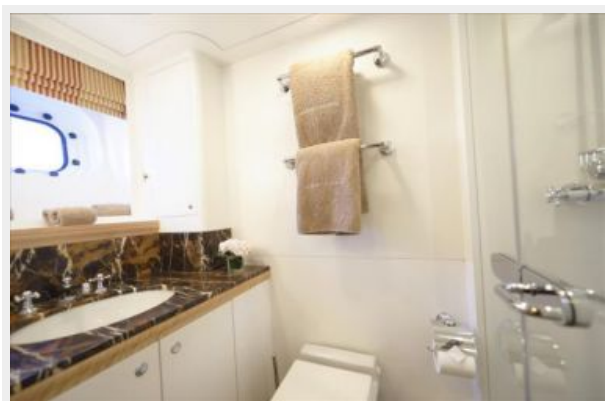
Компания предоставляет описание судна или яхты добросовестно, но не может гарантировать точность этой информации, а также не ручается за техническое состояние. Покупатель должен проинструктировать своих агентов или оценщиков исследовать представленную информацию более подробно, по собственному желанию. Продажа судна или яхты, изменение цены или снятие с продажи будет происходить без предварительного уведомления.

# ФОТОГРАФИИ







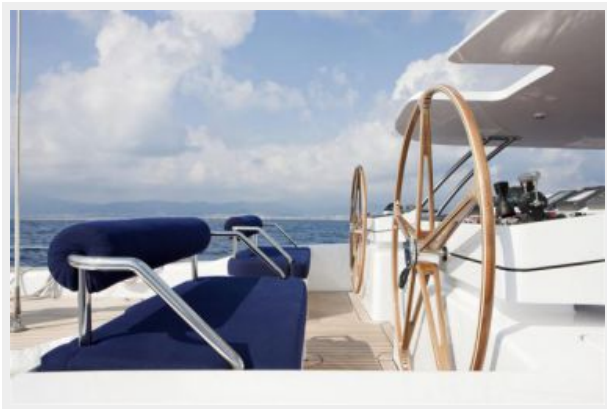




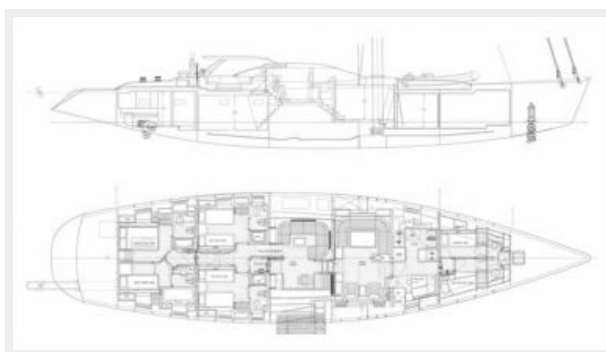












# КОНТАКТЫ

---

Андрей Шестаков (Andrey Shestakov) – ведущий яхтенный брокер отдела продаж яхт и судов компании Shestakov Yacht Sales Inc. Официальный представитель Shestakov Yacht Sales Inc. для русскоговорящих клиентов в центральном офисе компании в Майами/Форт Лодердейл/Флорида/США.

## Контактная информация

---

Email: [andrey@shestakovyachtsales.com](mailto:andrey@shestakovyachtsales.com)

Web: [shestakovyachtsales.com](http://shestakovyachtsales.com)

## Телефоны

---

Краснодарский край: **+7(918)465-66-44**

США, Майами, Флорида: **+1(954)274-4435**

## Время работы

---

Понедельник – Суббота: **9:00 - 21:00**  
EDT

Воскресенье: **Закрето**

## Адрес

---



Harbour Towne Marina, 850 NE 3rd St,  
STE 213, Dania, FL 33004