

SIESTA — REICHEL/PUGH



Builder: REICHEL/PUGH

Year Built: 1992

Model: Cruising or Racing Sailboat

Price: \$86,000 USD

Location: United States

LOA: 44' (13.41mm)

Beam: 13.75

Max Draft: 8' 3" (2.51mm)

Cruise Speed: 7 Knots Kts. (8 MPH)

Max Speed: 8 Knots Kts. (9 MPH)

Our experienced yacht broker, Andrey Shestakov, will help you choose and buy a yacht that best suits your needs **Siesta — REICHEL/PUGH** from our catalogue. Presently, at Shestakov Yacht Sales Inc., we have a wide variety of yachts available on our sale's list. We also work in close contact with all the big yacht manufacturers from all over the world.

If you would like to buy a yacht **Siesta — REICHEL/PUGH** or would like help answering any questions concerning purchasing, selling or chartering a yacht, please call **+1(954)274-4435**

TABLE OF CONTENTS

| | |
|------------------------------|---|
| TABLE OF CONTENTS | 2 |
| SPECIFICATIONS | 3 |
| Overview | 3 |
| Basic Information | 3 |
| Dimensions | 3 |
| Speed, Capacities and Weight | 3 |
| Accommodations | 4 |
| Hull and Deck Information | 4 |
| Engine Information | 4 |
| PHOTOS | 5 |
| CONTACTS | 8 |
| Contact details | 8 |
| Telephones | 8 |
| Office hours | 8 |
| Address | 8 |

SPECIFICATIONS

Overview

Siesta

Is a great vessel built by Mc Conaghy And Designed by Reichel Pugh

Carbon composite with a nice single diesel Volvo Penta MD2030 sail drive

Dimensions: LOA 44' beam 13'9" Draft 8'3"

Displacement: 16,032

Great weekend racer or short-handed weekender

Basic Information

Category: Cruising or Racing Sailboat

Model Year: 1992

Year Built: 1992

Country: United States

Dimensions

LOA: 44' (13.41mm)

LOD: 43' (13.11mm)

Beam: 13.75

Max Draft: 8' 3" (2.51mm)

Speed, Capacities and Weight

Cruise Speed: 7 Knots Kts. (8 MPH)

Max Speed: 8 Knots Kts. (9 MPH)

Water Capacity: 30 Gallons

Holding Tank: 2 Gal Gallons

Fuel Capacity: 30 Gal Gallons

Accommodations

Total Cabins: 1

Total Berths: 7

Total Heads: 1

Hull and Deck Information

Hull Material: Composite

Engine Information

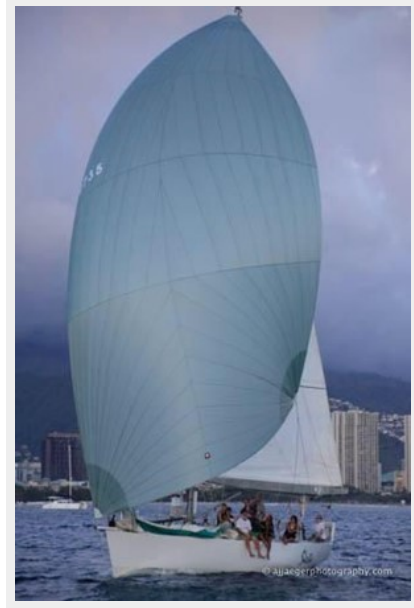
Engines: 1

Manufacturer: Volvo Penta

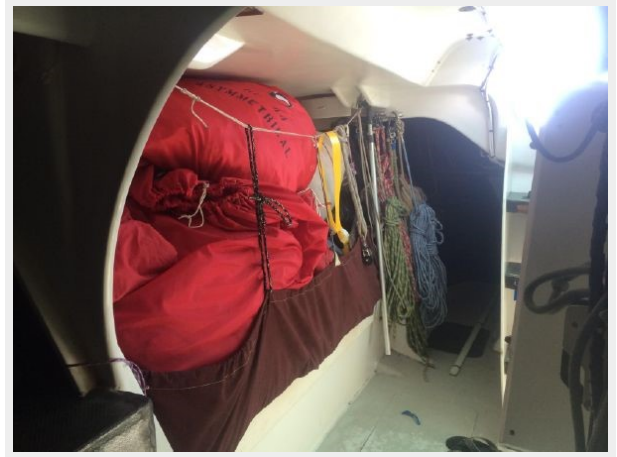
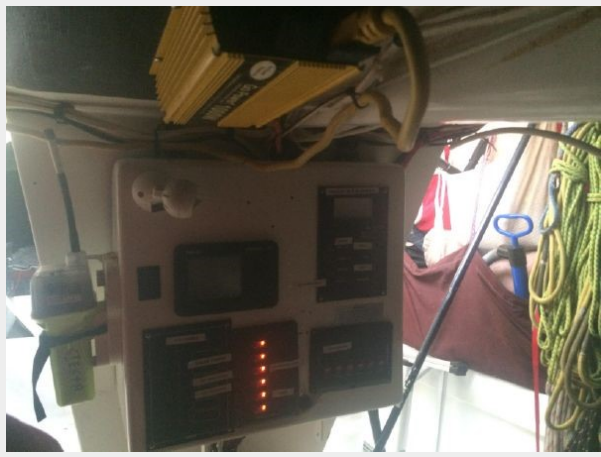
Engine Type: Sail Drive

Fuel Type: Diesel

PHOTOS







CONTACTS

Andrey Shestakov, leading yacht broker of the sales department of Shestakov Yacht Sales Inc. Shestakov Yacht Sales Inc., the official representative of the Miami/Fort Lauderdale FL headquarters.

Contact details

Email: andrey@shestakovyachtsales.com

Web: shestakovyachtsales.com/en/

Telephones

USA: +1(954)274-4435

Office hours

Monday – Saturday: **9:00 - 21:00** EDT

Sunday: **closed**

Address



Harbour Towne Marina, 850 NE 3rd St,
STE 213, Dania, FL 33004