

## PHRYNE — PERINI NAVI



**Builder:** PERINI NAVI

**Year Built:** 1999

**Model:** Cruising Sailboat

**Price:** PRICE ON APPLICATION

**Location:** Spain

**LOA:** 163' 4" (49.78m)

**Beam:** 33' 7" (10.24m)

**Min Draft:** 11' 1" (3.38m)

**Max Draft:** 27' 5" (8.36m)

**Cruise Speed:** 13 Kts. (15 MPH)

**Max Speed:** 15 Kts. (17 MPH)

Our experienced yacht broker, Andrey Shestakov, will help you choose and buy a yacht that best suits your needs **Phryne — PERINI NAVI** from our catalogue. Presently, at Shestakov Yacht Sales Inc., we have a wide variety of yachts available on our sale's list. We also work in close contact with all the big yacht manufacturers from all over the world.

If you would like to buy a yacht **Phryne — PERINI NAVI** or would like help answering any questions concerning purchasing, selling or chartering a yacht, please call **+1(954)274-4435**

# TABLE OF CONTENTS

---

|                              |    |
|------------------------------|----|
| TABLE OF CONTENTS            | 2  |
| SPECIFICATIONS               | 3  |
| Overview                     | 3  |
| Basic Information            | 3  |
| Dimensions                   | 3  |
| Speed, Capacities and Weight | 3  |
| Accommodations               | 4  |
| Hull and Deck Information    | 4  |
| Engine Information           | 4  |
| DETAILED INFORMATION         | 5  |
| Accommodations               | 5  |
| Construction                 | 5  |
| Engine/Mechanical Equipment  | 5  |
| Deck Equipment               | 6  |
| Electrical Equipment         | 7  |
| Navigation - Communication   | 7  |
| Wheelhouse                   | 8  |
| Sails & Rigging              | 8  |
| Exclusions                   | 9  |
| Exclusions                   | 9  |
| Disclaimer                   | 9  |
| PHOTOS                       | 10 |
| CONTACTS                     | 14 |
| Contact details              | 14 |
| Telephones                   | 14 |
| Office hours                 | 14 |
| Address                      | 14 |

---

# SPECIFICATIONS

---

## Overview

---

### Basic Information

---

**Category:** Cruising Sailboat

**Sub Category:** Cruising Ketch

**Model Year:** 1999

**Year Built:** 1999

**Country:** Spain

**Fly Bridge:** Yes

**Cockpit:** Yes

### Dimensions

---

**LOA:** 163' 4" (49.78m)

**LWL:** 135' 8" (41.35m)

**LOD:** 163' 4" (49.78m)

**Beam:** 33' 7" (10.24m)

**Min Draft:** 11' 1" (3.38m)

**Max Draft:** 27' 5" (8.36m)

### Speed, Capacities and Weight

---

**Cruise Speed:** 13 Kts. (15 MPH)

**Cruise Speed RPM:** 1800 Kts.

**Max Speed:** 15 Kts. (17 MPH)

**Max Speed RPM:** 2100 Kts.

**Displacement:** 1086879 Pounds

**Gross Tonnage:** 436 Pounds

**Water Capacity:** 3500 Gallons

**Fuel Capacity:** 12073 Gallons

---

## Accommodations

---

**Total Cabins:** 4

**Total Berths:** 8

**Sleeps:** 8

**Total Heads:** 5

**Crew Cabin:** 4

**Crew Berths:** 9

**Crew Sleeps:** 9

**Crew Heads:** 4

---

## Hull and Deck Information

---

**Hull Material:** Steel

**Deck Material:** Teak

**Hull Configuration:** Centerboard

**Hull Color:** Flag Blue

**Exterior Designer:** Perini Navi

**Interior Designer:** Perini Navi

---

## Engine Information

---

**Engines:** 2

**Manufacturer:** Duetz/Manheim Marine

---

# DETAILED INFORMATION

---

## Accommodations

---

Phryne sleeps eight (8) guests in four (4) double staterooms, all with ensuite and an additional two (2) to four (4) guests or children in the owner's sitting room to starboard of the master stateroom and in Pullman berths in two of the guest staterooms. Nine (9) crew are accommodated in three (3) double cabins and one triple cabin.

Phryne represents one of the most traditional and detailed 50m sailing yachts to be delivered from Perini Navi. Her design provides all the features of her larger 56m Perini sisters including a large protected cockpit, main deck pilothouse, expansive fly bridge, side shell boarding platform and sophisticated sail management system allowing one person to control all aspects of normal sail handling. Wide teak decks allow easy access forward and aft and a huge foredeck provides deck space for two 5m tenders. Phryne's main accommodation deck features large and comfortable spaces appointed with parquet inlaid floors, polished mahogany paneling and beveled glass doors. For dining and entertaining there are both formal and informal areas allowing for comfortable seating for 10. Also on the main deck she has a game room, day head and crew pantry. The owners stateroom below is full beam and very spacious featuring mahogany and fabric wall panels accented with gold fixtures and marble counters. The three guest staterooms are appointed in the same elegant fashion. Like all Perini Navi sailing yachts, Phryne is designed and equipped to sail safely around the globe in extreme comfort or entertain royalty at anchor off Monaco. Many of her sisterships have done both. After a trip to New Zealand and back, Phryne's recent cruising has been seasonal use in the Mediterranean. She has always been maintained to the highest standards by her original owners and professional full time crew.

## Construction

---

Steel hull, aluminum superstructure, teak decks, flag blue Awlgrip hull (painted 2016) and oyster white superstructure (painted 2011).

## Engine/Mechanical Equipment

---

- Two (2) Deutz TBD616V12 main engines, 720 kw at 2100 rpm (17,000 hrs)
- Sound Down exhaust silencers
- Halyard silicone exhaust hoses
- Kamewa feathering controllable pitch shafts with variable/reversible pitch propellers
- Vosper 75kw bow thruster
- Tanks: Diesel 45,700 liters; Lube Oil 1,530 liters; Water 13,000 liters
- Grey, black, sludge and bilge water: 7,500 liters
- Safe tender fueling station in lazarette, plumbed directly to main day tank supply

- Class required spare parts and tools as well as extensive additional spare parts for remote global cruising
- Bilge water treatment separator
- CO2 fire protection system
- Fire sprinkler system throughout accommodation areas
- Marsili hydraulic steering
- Hydraulic centerboard with 5.5kw powerpack
- Idromar fresh water sterilizing lamp
- (2) Idromar reverse osmosis water makers, 9600 l/day each
- Hamann, IMO approved sewage treatment plant (new mixer pump 2015)
- Jets vacuum toilets
- Alfa Laval MAB103 fuel centrifuge
- Condaria 120,000 BTU air conditioning fan coil units with (2) 20hp compressors
- Frascoldi refrigeration, walk-in freezer
- Ceccato air compressors and air drier (replaced 2016)
- Bauer Capitano C3E dive compressor with remote filling manifold at dive station
- Elcocell antifouling system (Nov 2016)
- Techno Leader Monitoring System
- Compressed air horn
- New Emergency Fire Pump (Gianneschi & Lombardi diesel) plus pipework (intake and feed to main 2015/2016) signed off with ABS @PAGEBREAK@

## Deck Equipment

---

- (2) Nanni anchor windlasses
- (2) Stainless Steel Poole type anchors, 570kg each
- (2) Alloy Fortress stern anchors and assorted lengths of chain
- (1) Galvanized Reef anchor
- (2) Rossi aft deck mooring capstans
- Tender launching and recovery pole
- Structural wave break on foredeck
- Starboard side hydraulic boarding ladder, flush mounted, self leveling stairs, with lower swim ladder, lights and shower (rebuilt/overhauled including ramps limit switches and lower assembly 2016)
- Stainless hydraulic passerelle with lights, door bell and intercom
- Fixed sun awning for cockpit
- Shell door swimming platform with lights, shower, swim ladder, bull bars, and retractable bits (new seal 2016)
- (2) RFD 20 person life rafts
- (30) SOLAS - approved lifejackets
- Sun bathing cushions
- (2) tenders: Williams 5.0m Yanmar diesel Jet Drive
- Side whips and running rigging for both tenders

- Hull door fueling station for tenders with pump, counter, and variable speed nozzle
- Extensive snorkeling inventory
- Wakeboard, waterskis, inflatable towing toys, and sports life vests
- (3) inflatable kayaks
- 16 Fenders (assorted sizes)
- (2) 4.5 meter hardwood fender boards, stored in dedicated racks
- (2) Boat hooks
- PVC covers for all exterior deck equipment
- Set of signal flags
- Anchor lights and day shapes
- All safety equipment as required by class and MCA

---

## Electrical Equipment

---

- 380V/50Hz three phase
- 220V/50Hz single phase for lighting
- 110V/60Hz (some 110V systems onboard but not domestic use)
- 24V AC/DC for emergency lights, electronics, etc.
- Three (3) Northern Lights M668A 380V/50Hz 1500rpm 80kw generators in sound shields
- Northern Lights emergency generator, 380V/50Hz 1500 rpm 12kw mounted in locker between the tender wells
- Master Volt rectifiers
- 80 kVA shore power connection
- 50 kVA Atlas frequency converter
- 110V/60Hz Atlas converter
- Variable speed drivers for furlers, winches, exhaust, extraction and ventilation fans, bow thruster, a/c compressors and windlasses etc.

---

## Navigation - Communication

---

- C. Plath Navipilot V/GM autopilot system
- C. Plath Jupiter magnetic compass
- C. Plath Navigat X MK1-GM Gyrocompass with analogue repeaters (new 2013/2014)
- Electronic compass
- Two (2) 96 nm Furuno FR1510 MK111 radar with 4' antennas interfaced with gyrocompass through AD100 and with GPS through an NMEA Distribution Box
- Dedicated Transas Navigation computer and flat screen with world chart folio software. Interface connections to ARPA radar, GPS, autopilot, wind instruments, etc.
- (1) Navipilot V HSC/GM autopilot
- (1) Gyrocompass analogue repeater

- (1) 3 push-button steering mode control (Auto/Hand/NFU)
- (1) Override/take-over unit
- (2) Tillers NFU (starboard and port) - in process of replacing on fly bridge
- (2) Rudder/angle indicator (starboard and port)

---

## Wheelhouse

---

- Navipilot V HSC/GM Master unit including:
  - Electronic Autopilot linked to the gyrocompass
  - Electronic Autopilot linked to the electronic compass
  - Off Course Alarm
- Gyrocompass analogue repeater
- Remote gyro control
- Override/take over push-button
- 3 push-button steering mode control (Auto/Hand/NFU)
- Rudder position/angel indicator
- (2) 96nm Furuno FR1510 MKIII radar with 4" antennas interfaced with gyrocompass through AD100
- (2) Furuno ARPA Autoplotter
- (1) Furuno FMD 8010 splash proof radar remote display on flying bridge
- Furuno AD 100 gyrocompass interface
- (2) Furuno GP80 MKIII GPS units
- NMEA distributor for GPS signal feed to:
  - (2) Furuno FR1510DA MKIII radar
  - (1) Furuno FMD 8010 remote display
  - (1) B&G Hercules 2000 series
  - (1) Transas Navigation Computer
  - (1) Furuno Felcom 81B Satcom standard BX - Immarsat C Model JUE-87
- (1) Furuno Fax 208 weather-fax
- (1) Furuno FCV 600L color video echo-sounder (with hull valve).
- V-SAT (Seatel)
  - Dome fitted 2009
  - New Modem fitted 2016
  - New Switch fitted 2016
  - Network Management System + AP's (AC classification 2015)

---

## Sails & Rigging

---

Phryne is ketch rigged with aluminum main and mizzen masts built by Perini Navi, with rod



standing rigging built by Ocean Yacht Systems. All rod rigging replaced 2011 by BSI Denmark. Sails are handled automatically by Perini Navi systems, concentrated on a single console at the wheelhouse, duplicated at the fly bridge where the helmsman can single handedly operate the entire system to set sail area, sail trim and furl or unfurl the sails, ease or tension the sheets, tack or jibe. A dedicated monitoring system allows continuous verification of sail system status, operational alarm interpretation and system parameter settings, including a histogram function. Genoa and staysails are furled on electric furlers with manual back up. Main and mizzen mast were painted 2011. The aluminum main and mizzen mast are 49m and 35m respectively from the deck. The main and mizzen sails are internal mast furling with electric furlers with manual backup. Twelve (12) Perini Navi captive reel winches with load cells for sheet tensions are used to handle all the sails and are controlled by the Perini Navi sailing system at the wheelhouse and fly bridge. Sails by Quantum: Mainsail, Mizzen, Staysail, Genoa, Fisherman Sails by Doyle: MPS

---

## Exclusions

---

Owners personal effects are excluded from sale. Artwork including antique furniture and area rugs are excluded from inventory but may be purchased with vessel for a predetermined additional price.

---

## Exclusions

---

Owner's personal belongings.

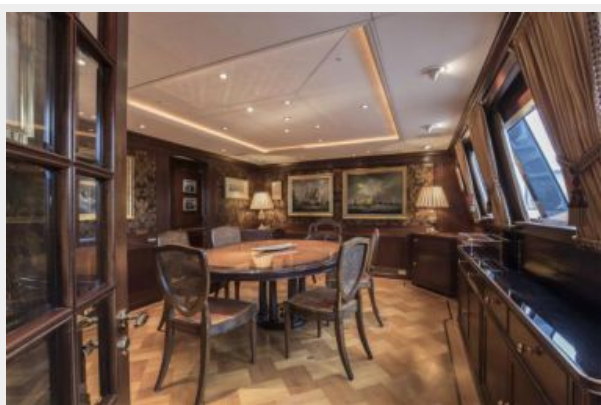
---

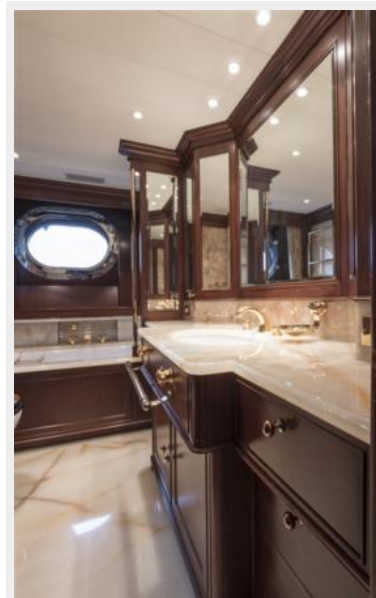
## Disclaimer

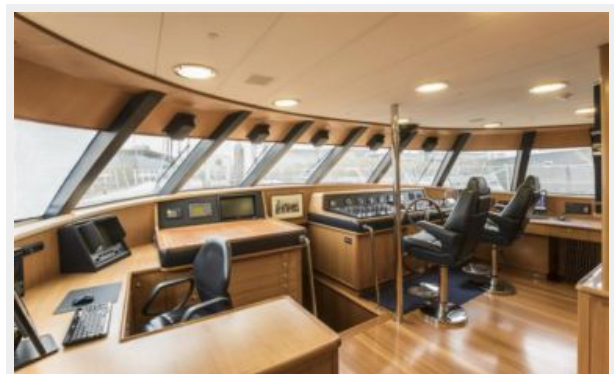
---

The Company offers the details of this vessel or yacht in good faith but cannot guarantee or warrant the accuracy of this information nor warrant the condition of the vessel. A buyer should instruct his representatives, agents, or his surveyors, to investigate such details as the buyer desires validated. This vessel or yacht is offered subject to prior sale, price change, or withdrawal without notice.

# PHOTOS









# CONTACTS

---

Andrey Shestakov, leading yacht broker of the sales department of Shestakov Yacht Sales Inc. Shestakov Yacht Sales Inc., the official representative of the Miami/Fort Lauderdale FL headquarters.

## Contact details

---

Email: [andrey@shestakovyachtsales.com](mailto:andrey@shestakovyachtsales.com)

Web: [shestakovyachtsales.com/en/](http://shestakovyachtsales.com/en/)

## Telephones

---

USA: +1(954)274-4435

## Office hours

---

Monday – Saturday: **9:00 - 21:00** EDT

Sunday: **closed**

## Address

---



Harbour Towne Marina, 850 NE 3rd St,  
STE 213, Dania, FL 33004