

PHRYNE — PERINI NAVI



Судостроитель: PERINI NAVI

Год постройки: 1999

Модель: Крейсерская яхта

Цена: **ЦЕНА ЯХТЫ ПО ЗАПРОСУ**

Местонахождение: Spain

Длина общая: 163' 4" (49.78m)

Ширина: 33' 7" (10.24m)

Мин. осадка: 11' 1" (3.38m)

Макс. осадка: 27' 5" (8.36m)

Крейс. скорость: 13 Kts. (15 MPH)

Макс. скорость: 15 Kts. (17 MPH)

Купить **Phryne — PERINI NAVI** а также выбрать подходящую вам яхту из нашего каталога яхт вам поможет опытный яхтенный брокер Андрей Шестаков. На сегодняшний день компания **Shestakov Yacht Sales Inc.** имеет большое количество яхт в собственном списке продаж, а также тесно сотрудничает со всеми крупными яхтенными производителями по всему миру.

Для того чтобы купить яхту **Phryne — PERINI NAVI** а также проконсультироваться по любому вопросу связанному с покупкой, продажей, чартером яхт позвоните по телефону **+7(918)465-66-44**.

ОГЛАВЛЕНИЕ

ОГЛАВЛЕНИЕ	2
ХАРАКТЕРИСТИКИ	3
Обзор	3
Основная информация	3
Размеры	3
Скорость, вместимость и масса	3
Размещение	4
Корпус и палуба	4
Информация о двигателе	4
ПОДРОБНОЕ ОПИСАНИЕ	5
Accommodations	5
Construction	5
Engine/Mechanical Equipment	5
Deck Equipment	6
Electrical Equipment	7
Navigation - Communication	7
Wheelhouse	8
Sails & Rigging	8
Exclusions	9
Исключения	9
Отказ от ответственности	9
ФОТОГРАФИИ	10
КОНТАКТЫ	14
Контактная информация	14
Телефоны	14
Время работы	14
Адрес	14

ХАРАКТЕРИСТИКИ

Обзор

Основная информация

Тип судна: Крейсерская яхта

Подкатегория: Крейсерский кеч

Модельный год: 1999

Год постройки: 1999

Страна: Spain

Открытая палуба мостика: Да

Кубрик: Да

Размеры

Длина общая: 163' 4" (49.78m)

Длина по ватерлинии: 135' 8" (41.35m)

Длина палубы: 163' 4" (49.78m)

Ширина: 33' 7" (10.24m)

Мин. осадка: 11' 1" (3.38m)

Макс. осадка: 27' 5" (8.36m)

Скорость, вместимость и масса

Крейс. скорость: 13 Kts. (15 MPH)

Крейсерская скорость поворота: 1800 Kts.

Макс. скорость: 15 Kts. (17 MPH)

Макс. скорость поворота: 2100 Kts.

Водоизмещение: 1086879 Pounds

Чистый вес: 436 Pounds

Вместимость воды: 3500 Gallons

Объем топливного бака: 12073 Gallons

Размещение

Всего кают: 4

Всего коек: 8

Спальные места: 8

Всего ком. состава: 5

Каюты экипажа: 4

Койки экипажа: 9

Спальных мест экипажа: 9

Комм. состав экипажа: 4

Корпус и палуба

Материал корпуса: Steel

Материал палубы: Teak

Комплектация корпуса: Centerboard

Цвет корпуса: Flag Blue

Дизайнер экстерьера: Perini Navi

Дизайнер интерьера: Perini Navi

Информация о двигателе

Двигатели: 2

Производитель: Duetz/Manheim Marine

ПОДРОБНОЕ ОПИСАНИЕ

Accommodations

Phryne sleeps eight (8) guests in four (4) double staterooms, all with ensuite and an additional two (2) to four (4) guests or children in the owner's sitting room to starboard of the master stateroom and in Pullman berths in two of the guest staterooms. Nine (9) crew are accommodated in three (3) double cabins and one triple cabin.

Phryne represents one of the most traditional and detailed 50m sailing yachts to be delivered from Perini Navi. Her design provides all the features of her larger 56m Perini sisters including a large protected cockpit, main deck pilothouse, expansive fly bridge, side shell boarding platform and sophisticated sail management system allowing one person to control all aspects of normal sail handling. Wide teak decks allow easy access forward and aft and a huge foredeck provides deck space for two 5m tenders. Phryne's main accommodation deck features large and comfortable spaces appointed with parquet inlaid floors, polished mahogany paneling and beveled glass doors. For dining and entertaining there are both formal and informal areas allowing for comfortable seating for 10. Also on the main deck she has a game room, day head and crew pantry. The owners stateroom below is full beam and very spacious featuring mahogany and fabric wall panels accented with gold fixtures and marble counters. The three guest staterooms are appointed in the same elegant fashion. Like all Perini Navi sailing yachts, Phryne is designed and equipped to sail safely around the globe in extreme comfort or entertain royalty at anchor off Monaco. Many of her sisterships have done both. After a trip to New Zealand and back, Phryne's recent cruising has been seasonal use in the Mediterranean. She has always been maintained to the highest standards by her original owners and professional full time crew.

Construction

Steel hull, aluminum superstructure, teak decks, flag blue Awlgrip hull (painted 2016) and oyster white superstructure (painted 2011).

Engine/Mechanical Equipment

- Two (2) Deutz TBD616V12 main engines, 720 kw at 2100 rpm (17,000 hrs)
- Sound Down exhaust silencers
- Halyard silicone exhaust hoses
- Kamewa feathering controllable pitch shafts with variable/reversible pitch propellers
- Vosper 75kw bow thruster
- Tanks: Diesel 45,700 liters; Lube Oil 1,530 liters; Water 13,000 liters
- Grey, black, sludge and bilge water: 7,500 liters
- Safe tender fueling station in lazarette, plumbed directly to main day tank supply

- Class required spare parts and tools as well as extensive additional spare parts for remote global cruising
- Bilge water treatment separator
- CO2 fire protection system
- Fire sprinkler system throughout accommodation areas
- Marsili hydraulic steering
- Hydraulic centerboard with 5.5kw powerpack
- Idromar fresh water sterilizing lamp
- (2) Idromar reverse osmosis water makers, 9600 l/day each
- Hamann, IMO approved sewage treatment plant (new mixer pump 2015)
- Jets vacuum toilets
- Alfa Laval MAB103 fuel centrifuge
- Condaria 120,000 BTU air conditioning fan coil units with (2) 20hp compressors
- Frascoldi refrigeration, walk-in freezer
- Ceccato air compressors and air drier (replaced 2016)
- Bauer Capitano C3E dive compressor with remote filling manifold at dive station
- Elcocell antifouling system (Nov 2016)
- Techno Leader Monitoring System
- Compressed air horn
- New Emergency Fire Pump (Gianneschi & Lombardi diesel) plus pipework (intake and feed to main 2015/2016) signed off with ABS @PAGEBREAK@

Deck Equipment

- (2) Nanni anchor windlasses
- (2) Stainless Steel Poole type anchors, 570kg each
- (2) Alloy Fortress stern anchors and assorted lengths of chain
- (1) Galvanized Reef anchor
- (2) Rossi aft deck mooring capstans
- Tender launching and recovery pole
- Structural wave break on foredeck
- Starboard side hydraulic boarding ladder, flush mounted, self leveling stairs, with lower swim ladder, lights and shower (rebuilt/overhauled including ramps limit switches and lower assembly 2016)
- Stainless hydraulic passerelle with lights, door bell and intercom
- Fixed sun awning for cockpit
- Shell door swimming platform with lights, shower, swim ladder, bull bars, and retractable bits (new seal 2016)
- (2) RFD 20 person life rafts
- (30) SOLAS - approved lifejackets
- Sun bathing cushions
- (2) tenders: Williams 5.0m Yanmar diesel Jet Drive
- Side whips and running rigging for both tenders

- Hull door fueling station for tenders with pump, counter, and variable speed nozzle
- Extensive snorkeling inventory
- Wakeboard, waterskis, inflatable towing toys, and sports life vests
- (3) inflatable kayaks
- 16 Fenders (assorted sizes)
- (2) 4.5 meter hardwood fender boards, stored in dedicated racks
- (2) Boat hooks
- PVC covers for all exterior deck equipment
- Set of signal flags
- Anchor lights and day shapes
- All safety equipment as required by class and MCA

Electrical Equipment

- 380V/50Hz three phase
- 220V/50Hz single phase for lighting
- 110V/60Hz (some 110V systems onboard but not domestic use)
- 24V AC/DC for emergency lights, electronics, etc.
- Three (3) Northern Lights M668A 380V/50Hz 1500rpm 80kw generators in sound shields
- Northern Lights emergency generator, 380V/50Hz 1500 rpm 12kw mounted in locker between the tender wells
- Master Volt rectifiers
- 80 kVA shore power connection
- 50 kVA Atlas frequency converter
- 110V/60Hz Atlas converter
- Variable speed drivers for furlers, winches, exhaust, extraction and ventilation fans, bow thruster, a/c compressors and windlasses etc.

Navigation - Communication

- C. Plath Navipilot V/GM autopilot system
- C. Plath Jupiter magnetic compass
- C. Plath Navigat X MK1-GM Gyrocompass with analogue repeaters (new 2013/2014)
- Electronic compass
- Two (2) 96 nm Furuno FR1510 MK111 radar with 4' antennas interfaced with gyrocompass through AD100 and with GPS through an NMEA Distribution Box
- Dedicated Transas Navigation computer and flat screen with world chart folio software. Interface connections to ARPA radar, GPS, autopilot, wind instruments, etc.
- (1) Navipilot V HSC/GM autopilot
- (1) Gyrocompass analogue repeater

- (1) 3 push-button steering mode control (Auto/Hand/NFU)
- (1) Override/take-over unit
- (2) Tillers NFU (starboard and port) - in process of replacing on fly bridge
- (2) Rudder/angle indicator (starboard and port)

Wheelhouse

- Navipilot V HSC/GM Master unit including:
 - Electronic Autopilot linked to the gyrocompass
 - Electronic Autopilot linked to the electronic compass
 - Off Course Alarm
- Gyrocompass analogue repeater
- Remote gyro control
- Override/take over push-button
- 3 push-button steering mode control (Auto/Hand/NFU)
- Rudder position/angel indicator
- (2) 96nm Furuno FR1510 MKIII radar with 4" antennas interfaced with gyrocompass through AD100
- (2) Furuno ARPA Autoplotter
- (1) Furuno FMD 8010 splash proof radar remote display on flying bridge
- Furuno AD 100 gyrocompass interface
- (2) Furuno GP80 MKIII GPS units
- NMEA distributor for GPS signal feed to:
 - (2) Furuno FR1510DA MKIII radar
 - (1) Furuno FMD 8010 remote display
 - (1) B&G Hercules 2000 series
 - (1) Transas Navigation Computer
 - (1) Furuno Felcom 81B Satcom standard BX - Immarsat C Model JUE-87
- (1) Furuno Fax 208 weather-fax
- (1) Furuno FCV 600L color video echo-sounder (with hull valve).
- V-SAT (Seatel)
 - Dome fitted 2009
 - New Modem fitted 2016
 - New Switch fitted 2016
 - Network Management System + AP's (AC classification 2015)

Sails & Rigging

Phryne is ketch rigged with aluminum main and mizzen masts built by Perini Navi, with rod

standing rigging built by Ocean Yacht Systems. All rod rigging replaced 2011 by BSI Denmark. Sails are handled automatically by Perini Navi systems, concentrated on a single console at the wheelhouse, duplicated at the fly bridge where the helmsman can single handedly operate the entire system to set sail area, sail trim and furl or unfurl the sails, ease or tension the sheets, tack or jibe. A dedicated monitoring system allows continuous verification of sail system status, operational alarm interpretation and system parameter settings, including a histogram function. Genoa and staysails are furled on electric furlers with manual back up. Main and mizzen mast were painted 2011. The aluminum main and mizzen mast are 49m and 35m respectively from the deck. The main and mizzen sails are internal mast furling with electric furlers with manual backup. Twelve (12) Perini Navi captive reel winches with load cells for sheet tensions are used to handle all the sails and are controlled by the Perini Navi sailing system at the wheelhouse and fly bridge. Sails by Quantum: Mainsail, Mizzen, Staysail, Genoa, Fisherman Sails by Doyle: MPS

Exclusions

Owners personal effects are excluded from sale. Artwork including antique furniture and area rugs are excluded from inventory but may be purchased with vessel for a predetermined additional price.

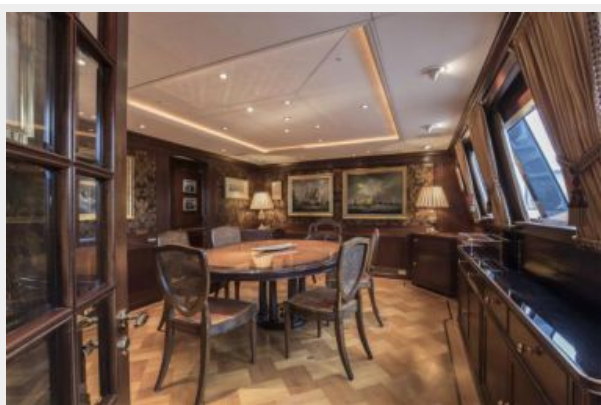
Исключения

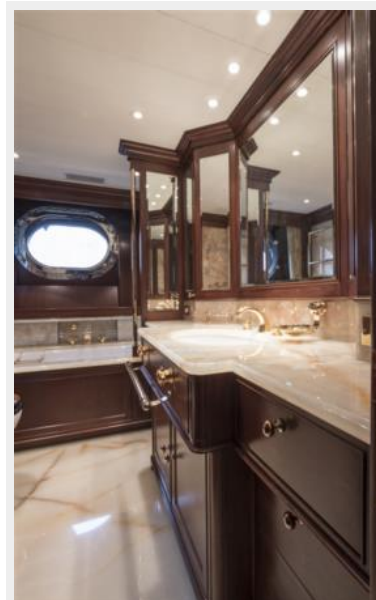
При продаже яхты исключаются личные вещи владельца.

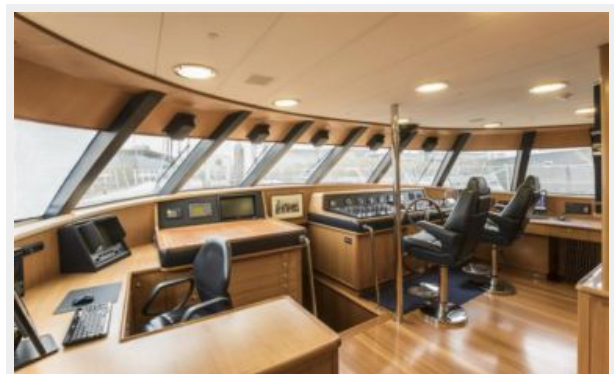
Отказ от ответственности

Компания предоставляет описание судна или яхты добросовестно, но не может гарантировать точность этой информации, а также не ручается за техническое состояние. Покупатель должен проинструктировать своих агентов или оценщиков исследовать представленную информацию более подробно, по собственному желанию. Продажа судна или яхты, изменение цены или снятие с продажи будет происходить без предварительного уведомления.

ФОТОГРАФИИ









КОНТАКТЫ

Андрей Шестаков (Andrey Shestakov) – ведущий яхтенный брокер отдела продаж яхт и судов компании Shestakov Yacht Sales Inc. Официальный представитель Shestakov Yacht Sales Inc. для русскоговорящих клиентов в центральном офисе компании в Майами/Форт Лодердейл/Флорида/США.

Контактная информация

Email: **andrey@shestakovyachtsales.com**

Web: shestakovyachtsales.com

Телефоны

Краснодарский край: **+7(918)465-66-44**

США, Майами, Флорида: **+1(954)274-4435**

Время работы

Понедельник – Суббота: **9:00 - 21:00**
EDT

Воскресенье: **Закрито**

Адрес



Harbour Towne Marina, 850 NE 3rd St,
STE 213, Dania, FL 33004