

GRAND CRU — HATTERAS



Builder: HATTERAS

LOA: 40' 0" (12.19m)

Year Built: 1988

Min Draft: 4' 0" (1.22m)

Model: Motor Yacht

Price: PRICE ON APPLICATION

Location: United States

Our experienced yacht broker, Andrey Shestakov, will help you choose and buy a yacht that best suits your needs **Grand Cru — HATTERAS** from our catalogue. Presently, at Shestakov Yacht Sales Inc., we have a wide variety of yachts available on our sale's list. We also work in close contact with all the big yacht manufacturers from all over the world.

If you would like to buy a yacht **Grand Cru — HATTERAS** or would like help answering any questions concerning purchasing, selling or chartering a yacht, please call **+1(954)274-4435**

TABLE OF CONTENTS

TABLE OF CONTENTS	2
SPECIFICATIONS	3
Overview	3
Basic Information	3
Dimensions	3
Accommodations	3
Hull and Deck Information	3
Engine Information	4
DETAILED INFORMATION	5
Overview	5
Exclusions	13
Disclaimer	13
PHOTOS	15
CONTACTS	21
Contact details	21
Telephones	21
Office hours	21
Address	21

SPECIFICATIONS

Overview

Grand Cru is an exceptionally well maintained Hatteras that has been constantly updated by her current owner since 2007. Her Jim Wynne modified-vee hull exhibits excellent form stability at displacement speeds and a soft ride at planing speeds, making her equally suitable for economical passagemaking or for fast cruising. Owner's plan to purchase a larger yacht dictates the sale of this turn-key vessel.

Basic Information

Category: Motor Yacht

Sub Category: Aft Cabin

Model Year: 1988

Year Built: 1988

Country: United States

Dimensions

LOA: 40' 0" (12.19m)

Min Draft: 4' 0" (1.22m)

MFG Length: 40' 0" (12.19m)

Accommodations

Total Cabins: 2

Total Berths: 3

Sleeps: 4

Hull and Deck Information

Hull Material: Fiberglass

Hull Color: White

Engine Information

Engines: 2

Manufacturer: CAT

Model: 3208

Engine Type: Inboard

Fuel Type: Diesel

DETAILED INFORMATION

Overview

Full Specifications

Length: 40 ft

Hull Material: Fiberglass

Number of Engines: 2

Boat Name

Grand Cru

Engines

Total Power: 750 HP

Engine 1:

Engine Brand: Caterpillar

Year Built: 1988

Engine Model: 3208TA

Engine Type: Inboard

Engine/Fuel Type: Diesel

Engine Hours: 350 SMOH in 2008 (1650 total)

Drive Type: Direct Drive

Engine Power: 375 SHP

Engine 2:

Engine Brand: Caterpillar

Year Built: 1988

Engine Model: 3208TA

Engine Type: Inboard

Engine/Fuel Type: Diesel

Engine Hours: 250 since new long block in 2009 (1650 total)

Drive Type: Direct Drive

Engine Power: 375 SHP

Generator: Brand: Onan Year Built: 1988

Model: 8.0 MDKD in sound shield Fuel Type: Diesel Hours: 1800 Output: 8 kW, 240v

Cruising Speed: 17 kts @ 2400 RPM Maximum Speed: 21 kts

Tanks

Fresh Water Tanks: (110 Gallons)

Fuel Tanks: (359 Gallons)

Holding Tanks: (41 Gallons)

Dimensions

Displacement: 38000

Accommodations

Number of single berths: 2

Number of double berths: 1

Number of cabins: 2

Number of heads: 2

Walk-thru

The vessel may be boarded amidships through port or starboard boarding gates. The foredeck is wide and flat, and has two dunnage boxes for storing lines and cleaning supplies. Four fenders sit in stainless brackets mounted to the side rails. The anchor platform has two anchor rollers, one with a 45 lb CQR with 300' all chain rode, the other with a Fortress storm anchor and rope/chain rode. Both anchors are managed by a Maxwell windlass with chain gypsy, capstan, and toe controls.

Two steps up from the side deck is a large carpeted afterdeck with factory hardtop and spray boards. The afterdeck is furnished with 4 teak chairs and a teak table, which fold for easy storage. The forward end of the afterdeck has a covered wet bar on centerline, companionway to starboard, and to port, three steps up to the flybridge.

The flybridge features a centerline helm with Simrad electronics and double Pompano seat finished in Sunbrella. A custom hardtop with recessed LED lighting and full side enclosure provides protection from the elements. Six zippered openings in the side curtains fasten to the hardtop ceiling without rolling, preventing scratches. Forward of the helm console is a long bench seat with Sunbrella cushions and storage underneath. An HID spotlight is mounted on the flybridge brow and controlled from the helm.

The afterdeck roof is behind and above the helm seat. It features a 1000 lb. Marquipt davit, and chocks for the tender. The davit winch controls are on a long cord, enabling operation from the roof or from the afterdeck below.

The main salon is entered from steps at the starboard side of the afterdeck. A large L-shaped Ultraleather sofa is to port. Forward of the sofa is an end table with Blue Ray player and under counter ice maker. A 43" Samsung HDTV is mounted above and forward of the end table. A bar with two stools and an Ultraleather barrel chair with under-seat storage are to starboard. Along the starboard wall are a teak spear gun mount, SMX-II climate controls, and Murphy switch gauges. The bar, end table, and hi-low table have burl counter tops. A Simrad NSS7 multi-function display, and a handheld VHF in charging cradle are mounted on the bar. The NSS7 is networked with all of the navigational electronics such as the autopilot, weather instruments, AIS receiver, side scan sonar, and the NSS8 on the bridge. Hidden beneath the bar is a Simrad GoFree wireless router, which is also networked with the other electronics. The salon has large fixed windows forward, and large opening side windows with valences, curtains, and enameled wood mini blinds. LED ribbon lights mounted behind the valences provide soft indirect lighting with remote-controlled dimming. A Nest smart carbon monoxide and smoke detector communicates with Nest detectors installed in each stateroom. If smoke or carbon monoxide is detected, alarms will sound in all cabins regardless of where the problem occurs. The Nest

detectors can also be monitored on the web. In addition to the standard engine room hatch, the access hatches over the main engines have been modified so that they can be opened without removing the salon carpeting.

The full-beam master stateroom is aft and down four steps. It has an island queen berth on centerline with bedside tables. There are built-in bureaus along the sides of the stateroom with drawers, storage lockers, and burl counter tops. The two side windows open, and the large opening port aft doubles as an escape hatch. A Nest smart CO and smoke detector mounted overhead communicates with the salon and guest stateroom detectors. Cruisair SMX-II climate controls are mounted on the forward bulkhead next to the hanging locker door. The hanging locker has space for clothing, a deep shelf on the right, and a wall-mounted Dyson vacuum cleaner with charging station on the left. The en suite head has updated fixtures, stall shower, VacuFlush head, cultured marble countertop with molded sink, under counter storage, deep storage locker with shelves, AC and DC lighting, and exhaust fan.

The galley is on the starboard side forward of the main salon and down four steps. It features many modern upgrades such as a Vitrifrigo stainless steel refrigerator/freezer, GE ceramic cook top, custom pull out trash/recycling drawer with teak front, microwave, Breville mini smart oven, updated fixtures, and LED lighting. Storage is provided by multiple cabinets and drawers.

Opposite the galley to port is the guest head, which doubles as the day head. It features a large stall shower, VacuFlush head, vanity, cultured marble countertop with molded sink, updated fixtures, under counter storage, and large recessed locker with shelving, AC and DC lighting, and exhaust fan.

The guest stateroom is forward of the galley and features V-berths, a hanging locker, drawers, LED reading lights, stereo speakers, large overhead hatch with screen, two opening ports, and dedicated air handler with outlet and return vents. A Nest smart CO and smoke detector communicates with the salon and master stateroom detectors, and can be monitored online.

Flybridge

- Custom epoxy composite hard top (2013)
- Full side enclosure by Cape Lookout Canvas (2013)
- Recessed Imtra LED lighting in hard top with momentary dimmer switch (2013)
- Simrad NSS8 Multi-Function Display (2012)
- Navipod weather proof housing for NSS8 (2012)

- Custom teak mount for Navipod, hinged with storage under (2010)
- Simrad IC20 Rudder Angle Indicator (2012)
- Simrad IC20 Graphic data repeater (2012)
- Simrad RS35 VHF with AIS receiver (2014)
- Commercial grade Shakespeare 6225 VHF Antenna on 316 stainless extension (2014)
- Simrad AC42 Autopilot Computer (2012)
- Simrad RPU160 oversized autopilot hydraulic steering pump (2012)
- Maretron WSO100 NMEA 2000 Ultrasonics Wind/Weather Station (2014)
- Simrad StructureScan LSS-1 side scan sonar computer with dual transducers (2012)
- High Intensity Discharge spotlight HID-35-RC with 5000 ft. beam (2009)
- Hynautic hydraulic steering
- VDO engine gauges
- Morse controls
- Bennett trim tab controls
- Hatteras systems monitor
- Halon fire suppression system override
- Portable fire extinguisher replaced (2016)
- Stamoid console cover (2012)
- Sunbrella bench seat cushions (2013)
- Sunbrella helm seat upholstery (2013)
- Glomex 14" TV antenna on hardtop roof, bypass amp in main salon (2013)

All navigational electronics are integrated via Simnet, NMEA 2000, and/or marine-grade Ethernet. The autopilot is controlled by the NSS8 and NSS7 multi-function displays. AIS traffic, wind and weather data, routes and waypoints, etc. display on the MFD's. Networked devices not listed above include a Simrad Rudder Angle Sensor (2012), Simrad Rate Compass (2012), and Simrad GoFree WiFi router (2013).

Foredeck

- 45 lb. CQR primary anchor set on inner bow roller
- 300' 5/16" G-4 high tensile chain anchor rode for primary (2012)
- Fortress FX-55 storm anchor with 300' rope/chain rode set on outer roller (2012)
- Windline URM-3 outer bow roller and chain stop for storm anchor (2012)
- 1,540 lb. capacity Maxwell RC10-8 windlass with chain gypsy and capstan (2012)
- Windlass toe controls (2012)
- Waterproof LED cove ribbon lights with main salon dimmer (December 2010)
- Anchor platform teak (2009)
- Two dunnage boxes
- Four fenders in rail mounted brackets
- Salon windshield cover

Boat Deck

- 1,000 lb. Marquipt davit
- 2,000 lb. davit winch with wired remote control (2011)
- Weaver dinghy chocks (2009)

Afterdeck

- Four SeaTeak Windrift folding 6-position deck armchairs (2016)
- SeaTeak Gatsby folding teak table (2016)
- Carpeting (2007)
- Overhead LED dome light (2016)
- Custom extra-thick teak treads to flybridge, finished in AwlWood (2016)
- Marinco outlet and weatherproof cover replaced (2016)
- Fresh water washdown
- Covered wet bar with sink, faucet, stainless bottle opener, and storage
- Spray boards
- Lifeline gate and ladder to swim platform, teak treads with Awlwood (2016)
- 50 amp and 30 amp shore power connections
- Cable TV connection

Main Salon

- Cruisair SMX-II climate controls (2008)
- Simrad NSS8 Multi-Function Display (2012)
- Raritan stainless built-in ice maker (2006 model purchased in 2014)
- Indirect LED lighting with remote controlled dimming (2017)
- Samsung 43" flat screen HDTV (2012)
- Samsung Blu-Ray player (2012)
- Carpeting with engine cover access (2010)
- Standard Horizon HX851 handheld DSC VHF with GPS in charging cradle (2014)
- Murphy switch gauges (2) wired to main engine fuel shut-offs (2009)
- 10 lb. fire extinguisher replaced (November 2016)
- Soft Pack First Aid Kit (2015)
- Custom enameled wood mini blinds
- Dyson vacuum cleaner with charging station mounted in hanging locker (2013)
- Nest smart CO and smoke detector, with Bluetooth and Wi-Fi connectivity (2016)
- Custom made Ultraleather barrel chair (2007)
- Two upholstered bar stools
- Large L-shaped Ultraleather sofa

- Hatteras Hi-Lo teak table with burl folding top
- Whale gallon-per-stroke emergency bilge pump and hoses, in sofa storage bin
- AC and DC lighting
- Three large windows forward with valences and exterior cover
- Two slide-open side windows with valences, curtains, mini blinds, and locks
- Sony marine stereo

Galley

- Vitfrigo DP2600iXAC stainless steel dual voltage refrigerator/freezer (2012)
- GE 220v ceramic cooktop (2016)
- Custom teak-faced trash/recycling pullout (2016)
- Breville Mini Smart Oven (2016)
- LED DC wall light (2016)
- Under counter fluorescent AC lighting
- Sink faucet (2012)
- Microwave
- 4 drawers
- 5 cabinets
- Deep dry goods trap

Master Stateroom & Head

- Cruisair 12,000 BTU 240v evaporator/air handler (2008)
- Cruisair SMX-II climate controls (2008)
- Shower faucet, shower head, and sink faucet (2012)
- Memory foam mattress topper (2015)
- Nest smart CO and smoke detector, with Bluetooth and Wi-Fi connectivity (2016)
- Island tapered queen bed
- Built-in night stands each with burl countertop, drawer, and storage below
- LED reading lights
- Built-in bureaus with burl countertops, drawers, and storage lockers
- Spare 24x26 4-blade Michigan Wheel nibral propellers in lockers under night stands
- Opening side windows
- Large opening port/escape hatch above berth
- Teak fishing rod holders overhead to starboard
- Spare parts in locker under port bureau

Guest Stateroom & Head

- VacuFlush head replaced (2009)
- Shower faucet, shower head, and sink faucet (2012)
- Nest smart CO and smoke detector, with Bluetooth and Wi-Fi connectivity (2016)

Engine Room

- Caterpillar 3208TA 375 (port) with 350 hours SMOH in 2008
- Caterpillar 3208TA 375 (starboard) with 250 hours since long block in 2009
- Onan MDKD 8 kW 240v generator with 1800 hours in sound shield
- Two AGM 8-D batteries (2014)
- Seaward 11 gallon marine water heater (2015)
- Two Cruisair 16,000 BTU 240v reverse-cycle SMX-II condensing units (2008)
- Kim Hotstart immersion block heaters 1500 watt 120v (2009, replaced 2012)
- Rule 1500 bilge pumps (3) replaced (November 2016)
- Low profile bilge pump with 2 pickups (2010)
- VacuFlush Whisper Quiet master head pump (2014)
- VacuFlush Whisper Quiet guest head pump (2013)
- VacuFlush vacuum tanks (2), pressure switch assemblies replaced (2013)
- Dometic SeaLand T Series Waste Discharge Pump (2011)
- LED engine room lighting (2016)
- Smart potable water pump (2015)
- Oil change system (mains and generator); Reverso pump replaced (2012)
- Generator heat exchanger replaced (2009)
- Bilge blowers (2)
- Automatic halon fire control system
- Isolation transformer
- Hydraulic steering reservoir

Recent Maintenance

- Main engines and generator oil & filter services (November 2016)
- Bottom paint - Petit Trinidad SR (October 2016)
- Complete exterior wax (October 2016)
- PropSpeed (May 2016)
- Transom re-sprayed with AwlCraft and name decal replaced (May 2016)
- Replaced USCG approved signaling devices (November 2016)
- Adjusted prop shaft and rudder stuffing boxes (November 2016)
- Replaced (3) engine room Rule 1500 bilge pumps (November 2016)
- Verified all (7) bilge pumps and high water alarms operational (November 2016)
- Replaced stern light with new LED unit (November 2016)
- Verified all navigation lights and anchor light operational (November 2016)

- Portable fire extinguishers (4) replaced (November 2016)
- Keel tank vacuumed out (2016)
- Re-painted all exterior window frames with Interlux Perfection (2014)
- Rudders removed, resealed, and repacked (2014)
- Side windows removed and re-bedded (2012)
- Portside bilge blower replaced (2011)
- Racor fuel/water separators (3) for mains and generator
- Various water system pipes and hoses replaced
- Various engine hoses replaced

Tender

- 2013 Boston Whaler 110 Sport (less than 30 hours)
- 25 ELPT ForeStroke Mercury engine
- Navigation lights
- No-feedback steering
- Box tow eye
- Comfort package with forward and aft bench seat cushions
- Lifting harness
- Sun-top with boot

Exclusions

- Artwork
- BBQ Grill
- Spear gun
- Tools
- Personal items
- Quilts

Exclusions

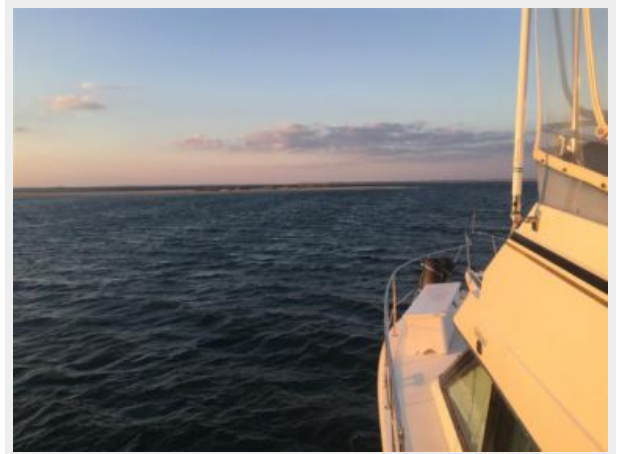
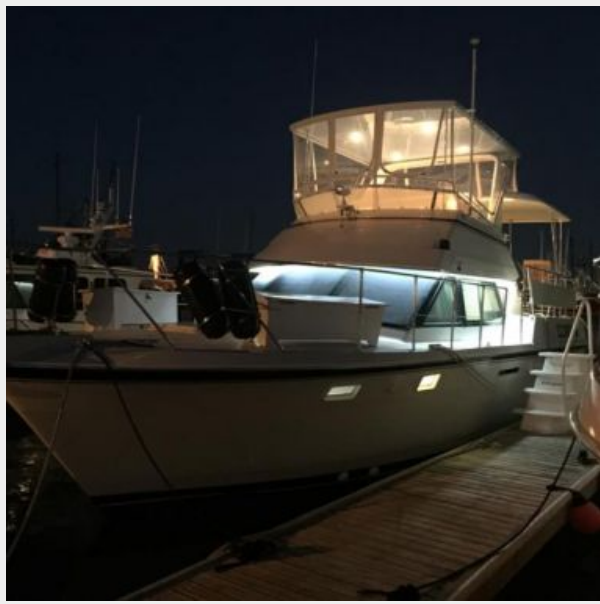
Owner's personal belongings.

Disclaimer

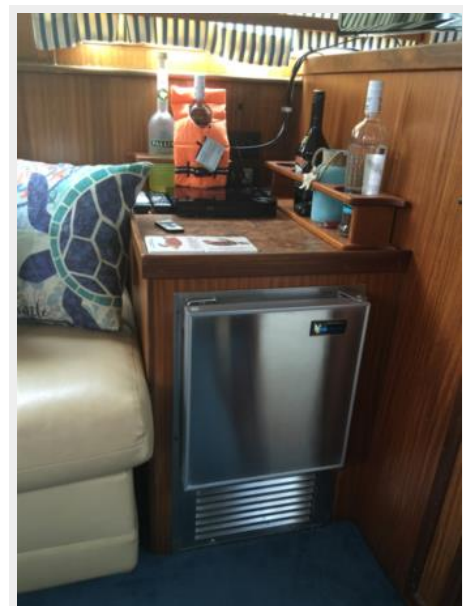
The Company offers the details of this vessel or yacht in good faith but cannot guarantee or warrant the accuracy of this information nor warrant the condition of the vessel. A buyer should instruct his representatives, agents, or his surveyors, to investigate such details as the buyer desires validated. This vessel or yacht is offered subject to prior sale, price change, or withdrawal

without notice.

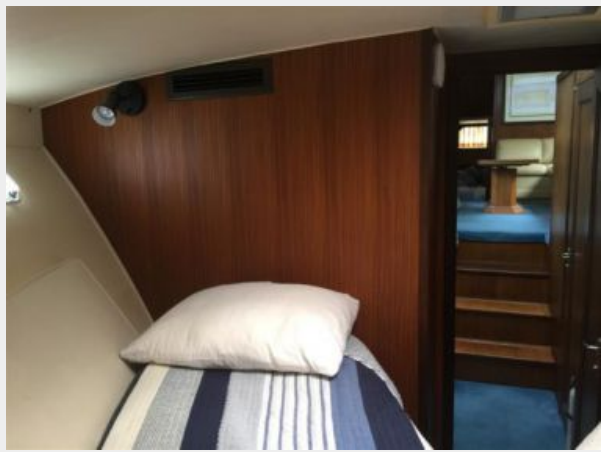
PHOTOS













CONTACTS

Andrey Shestakov, leading yacht broker of the sales department of Shestakov Yacht Sales Inc. Shestakov Yacht Sales Inc., the official representative of the Miami/Fort Lauderdale FL headquarters.

Contact details

Email: andrey@shestakovyachtsales.com

Web: shestakovyachtsales.com/en/

Telephones

USA: +1(954)274-4435

Office hours

Monday – Saturday: **9:00 - 21:00** EDT

Sunday: **closed**

Address



Harbour Towne Marina, 850 NE 3rd St,
STE 213, Dania, FL 33004