

ORION — HUNTER



Builder: HUNTER

LOA: 45' 0" (13.72m)

Year Built: 1998

Model: Cruising Sailboat

Price: PRICE ON APPLICATION

Location: United States

Our experienced yacht broker, Andrey Shestakov, will help you choose and buy a yacht that best suits your needs **ORION — HUNTER** from our catalogue. Presently, at Shestakov Yacht Sales Inc., we have a wide variety of yachts available on our sale's list. We also work in close contact with all the big yacht manufacturers from all over the world.

If you would like to buy a yacht **ORION — HUNTER** or would like help answering any questions concerning purchasing, selling or chartering a yacht, please call **+1(954)274-4435**

TABLE OF CONTENTS

TABLE OF CONTENTS	2
SPECIFICATIONS	5
Overview	5
Basic Information	5
Dimensions	6
Speed, Capacities and Weight	6
Accommodations	6
Hull and Deck Information	6
Engine Information	6
DETAILED INFORMATION	7
Accommodations	7
Galley	7
Electronics/Navigation	7
Entertainment	8
Mechanical	8
Sails, Mast, Rigging, Winches	8
Cockpit & Deck Hardware	8
Ground Tackle	9
Electrical/Plumbing	9
Additional Items & Safety	9
Broker Comments	10
Disclaimer	10
Exclusions	10
Disclaimer	10
PHOTOS	12
Hunter 450 Passage Stbd Quarter	12
Hunter 450 Passage Welcome Aboard	12
Hunter 450 Passage Center Cockpit	12

Hunter 450 Passage Companionway	12
Hunter 450 Passage MFG Layout	12
Hunter 450 Passage Main Salon Fwd	13
Hunter 450 Passage U-Shaped Galley	13
Hunter 450 Passage Main Salon Aft	13
Hunter 450 Passage Galley to Port	13
Hunter 450 Passage Galley Princess 3 Burner	13
Hunter 450 Passage Stainless Sink	13
Hunter 450 Passage Sofa Port Side	14
Hunter 450 Passage Sofa w/Table	14
Hunter 450 Passage Settee Stbd Side	14
Hunter 450 Passage Nav-Station	14
Hunter 450 Passage Nav-Station Monitoring	14
Hunter 450 Passage VHF	14
Hunter 450 Passage A/C D/C panel	15
Hunter 450 Passage Aft Master Suite	15
Hunter 450 Passage Master Suite Desk	15
Hunter 450 Passage Master Suite Stbd Side	15
Hunter 450 Passage Master Shower w/Tub	15
Hunter 450 Passage Master Shower Entry	15
Hunter 450 Passage Master Hanging Locker	16
Hunter 450 Passage Master Head Entry	16
Hunter 450 Passage Master Sink	16
Hunter 450 Passage Master Electric Toilet	16
Hunter 450 Passage Cabin Stbd Side	16
Hunter 450 Passage storage Under Portside Bed	17
Hunter 450 Passage VIP Hanging Locker	17
Hunter 450 Passage Walk-Thru to VIP Head	17
Hunter 450 Passage VIP Sink	17

Hunter 450 Passage VIP Stateroom Aft	17
Hunter 450 Passage VIP Stateroom	17
Hunter 450 Passage Cockpit	18
Hunter 450 Passage Helm	18
Hunter 450 Passage Wind & Depth	18
Hunter 450 Passage Port Winches	18
Hunter 450 Passage Stbd Winches	18
Hunter 450 Passage Bow	18
Hunter 450 Passage Anchor Windlass	19
Hunter 450 Passage Fore-Deck Looking Aft	19
Hunter 450 Passage NEW Cockpit Cushions	19
Hunter 450 Passage Aft Deck	19
Hunter 450 Passage Stern Seat	19
Hunter 450 Passage Swim Step	19
Hunter 450 Passage Fiberglass Arch	20
Hunter 450 Passage Engine Room	20
Hunter 450 Passage Jib & In-Mast Furler	20
Hunter 450 Passage Yanmar Diesel	20
Hunter 450 Passage Waiting For YOU	20
CONTACTS	21
Contact details	21
Telephones	21
Office hours	21
Address	21

SPECIFICATIONS

Overview

Cruisers, Live-aboards, Weekenders - Consider ORION

ORION has a comfortable cruising layout with two private staterooms, two full heads, spacious salon bathed in natural light and a well-planned galley. Plenty of organized and accessible storage found through-out!

On deck is a roomy center cockpit, equipped with full electronics, NEW cushions and generous storage. Aft of the cockpit is room for laying in the sun and easy access to the dinghy stored on davits. Transom access couldn't be easier with a pass-thru and stairs. You will find large storage compartments, deck shower and stern rail seating.

The furling jib and main are easily handled from the cockpit!

Anchoring options include two anchors with 100' of chain and additional nylon rode. Easily handled with the Horizon 1500 windlass.

Interior is light-bright and inviting! Plenty of room for a family or two couples. Cabinetry and sole show light use. **Electric toilets have fresh water flush!**

Recent Maintenance/Up-Grades:

2016

- Bottom Paint

2017

- Serviced Air Conditioning
- Bimini (New)
- Raymarine Electronics (New)

Bring an offer - ORION is a Ready to Go!

Basic Information

Category: Cruising Sailboat

Model Year: 1998

Year Built: 1998

Country: United States

Dimensions

LOA: 45' 0" (13.72m)

LWL: 38' 8" (11.79m)

Clearance: 63' 0" (19.20m)

Speed, Capacities and Weight

Displacement: 26000 Pounds

Water Capacity: 200 Gallons

Holding Tank: 50 Gallons

Fuel Capacity: 94 Gallons

Accommodations

Total Cabins: 2

Sleeps: 7

Total Heads: 2

Hull and Deck Information

Hull Material: Fiberglass

Hull Configuration: Monohull

Hull Finish: Plastic

Engine Information

Engines: 1

Manufacturer: Yanmar

Model: 4JH2-HTE

Engine Type: Inboard

Fuel Type: Diesel

DETAILED INFORMATION

Accommodations

The layout of **ORION** is open and designed for comfortable living while cruising or at anchor. Upon entering the main salon from the companion way, you are met with an inviting space - flooded with natural light. The U-shaped galley to port is equipped with double stainless steel sinks, 3-burner propane stove/oven and a large top loading refrigerator and freezer. Plenty of storage for provisions and galley ware. Forward of the galley is comfortable leather seating and TV with DVD player, stereo, 12-disc charger and 200w Amp. To starboard is the settee with soft leather upholstery. Can also be made into a double bed. To keep things cool is a 16,000 BTU A/C. Forward of the salon is the guest stateroom with double bed, hanging lockers and many drawers for storage. The guest head is forward of the stateroom with a "fresh water flush" electric toilet.

The well equipped navigation station is to starboard, aft of the salon. Access to the Yanmar diesel and Kohler gen-set is between the navigation station and galley. Moving aft is a shared head where you will find an electric toilet with fresh water flush. Entering the spacious owners stateroom to starboard is generous storage, built-in desk and seating. A queen walk-around bed is on the center-line with more storage to port. In addition is a 12,000 BTU A/C. Another treat found in the owners stateroom is the private shower with tub!

- 2 Staterooms
- Sleeping for 7
- 2 Heads
- Galley to port
- Large Settee to port
- Nav Station to Stbd
- A/C, 2 - 12,000BTU and 16,000 BTU (Serviced 4/2017)
- Teak and Holly sole
- Opening and fixed ports w/shades
- Opening hatches

Galley

U-shaped to port

- Sinks, Double Stainless
- Stove/Oven, 3-Burner, Princess, Gimbale Propane
- Microwave, Goldstar
- Generous cabinetry storage with Corian counters

Electronics/Navigation

Chart Plotter/Radar, Raymarine (2017) (Located at Nav-station and Cockpit)

- Wind, Raymarine (2017)
- Speed, Raymarine (2017)
- Depth, Raymarine (2017)
- Auto-Pilot, Raymarine (2017)
- VHF: Standard Horizon Eclipse DSC
- VHF Handheld: Uniden, Atlantis 250
- Magnetic Compass: Ritchie Power-damp

Entertainment

Stereo: JVC, Mod, KS-FX200

- CD Changer: JVC, 12-Disc, Mod.CH-X400
- Amplifier: Pioneer, 200W
- Speakers: 8 Total, Cockpit 2 Marine, Interior 6
- TV: 2 Total
- Amplified TV Antenna
- DVD Player: Etec, Mod. DVD2658 (Salon)

Mechanical

Yanmar 75 HP, Model 4JH2-HTE

- Hours: **1398** (As of May 2017)
- Propeller: 3-Blade
- Spare Propeller: 2-Blade
- Fuel Filter(s): 3 Total, 2 Racor water/fuel separator w/standard engine mount filter.
- **Air Conditioning:** Marine Air Systems w/Reverse Heat. 12,000 BTU & 16,000 BTU (Serviced April 2017)

Sails, Mast, Rigging, Winches

Sloop Rigged

- Sail Inventory: Main 1, Jib 1 - Good Condition
- Mast: Aluminum, w/In Mast Furler
- Jib Furler
- Boom Vang
- Winches: Lewmar 2-Speed, Self Tailing - 4 Total. Cockpit Port 2 - #44, Cockpit Stbd 2 #44, 1 #48

Cockpit & Deck Hardware

Cockpit Table, Folding

- NEW Cockpit Cushions(4/2017)
- Cockpit storage compartment behind helm seat
- Dodger, Curved Polycarbonate
- NEW Bimini, Navy Blue (2017)
- Bow Pulpit: Stainless Steel w/ 2 Offset Anchor Rollers
- Lifelines: Double S/S Cable
- Stanchions: Stainless Steel
- Transom Swim Ladder
- Transom Steps
- Transom Deep Storage
- Cockpit Arch
- Dinghy Davits - Martec

Ground Tackle

Windlass: Simpson Lawrence, Horizon 1500

- Anchor: 2 Total - 1 FortressFX-37 (45'-51') 100' 3/8" Chain & 1 Fortress FX-23 (39'-45') 25' 3/8" Chain. Each have approximately 100' Nylon Rode

Electrical/Plumbing

Distribution Panel: A/C & D/C

- Shore Power: 2 30 Amp
- Batteries: House - 2 Gel 8D (2011) Start - 1 Lead Acid (11/2013)
- Charger/Inverter
- Solar Panel: 1
- **Generator:** Kohler, 9 Kw. Hours:860 (Approx)
- Hot & Cold Pressurized Water
- Water Heater: 11 Gal, Seaward, Mod. S-1000
- Toilet(s): 2 - Raritan Electric, Fresh Water Flush (2010) *Piping from toilets to tank replaced 2010
- Macerator: 2 (2014)
- Shower: 2 w/Sump

Additional Items & Safety

Dingy: Zodiac 10' 4" Wave 310 RIB (2014)

- **Outboard:** Electric 3 HP, Mini Coda (2015), Newport Vessels 55lb Thrust
- Bilge Pump Manual
- Bilge Pump Electric
- First Aid Kit

- Fire Extinguisher: 3
- Smoke Detector: 3
- Carbon Monoxide Detector: 1
- Misc. Life Vests: 9
- An additional list of items is available upon request

Broker Comments

ORION has been well maintained and cared for. An excellent choice for live aboard and cruising the islands.

Recent Maintenance/Up-Grades

2016

- Bottom Paint

2017

- Serviced Air Conditioning
- Bimini (New)
- Raymarine Electronics (New)

If your dream is to cruise in comfort - ORION is ready for you!

Owners personal items are excluded from the sale

Disclaimer

The Company offers the details of this vessel in good faith but cannot guarantee or warrant the accuracy of this information nor warrant the condition of the vessel. A buyer should instruct his agents, or his surveyors, to investigate such details as the buyer desires validated. This vessel is offered subject to prior sale, price change, or withdrawal without notice.

Exclusions

Owner's personal belongings.

Disclaimer

The Company offers the details of this vessel or yacht in good faith but cannot guarantee or warrant the accuracy of this information nor warrant the condition of the vessel. A buyer should instruct his representatives, agents, or his surveyors, to investigate such details as the buyer

desires validated. This vessel or yacht is offered subject to prior sale, price change, or withdrawal without notice.

PHOTOS



Hunter 450 Passage Stbd Quarter



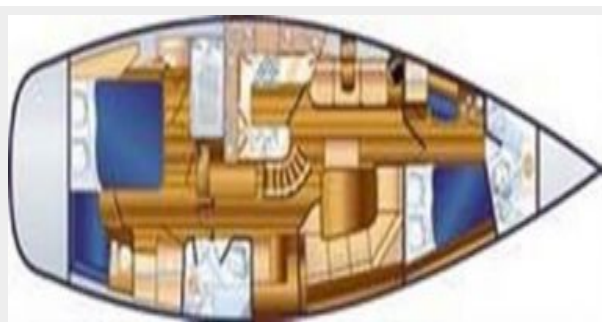
Hunter 450 Passage Welcome Aboard



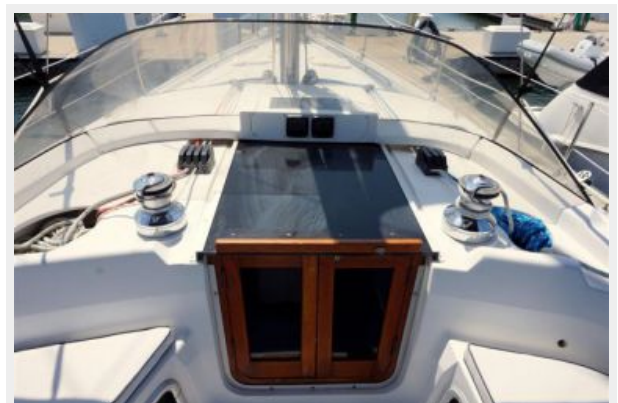
Hunter 450 Passage Center Cockpit



Hunter 450 Passage MFG Layout



Hunter 450 Passage Companionway



Hunter 450 Passage Main Salon Fwd



Hunter 450 Passage U-Shaped Galley



Hunter 450 Passage Main Salon Aft



Hunter 450 Passage Galley to Port



Hunter 450 Passage Stainless Sink



Hunter 450 Passage Galley Princess 3 Burner



Hunter 450 Passage Sofa Port Side



Hunter 450 Passage Sofa w/Table



Hunter 450 Passage Settee Stbd Side



Hunter 450 Passage Nav-Station



Hunter 450 Passage Nav-Station Monitoring



Hunter 450 Passage VHF



Hunter 450 Passage A/C D/C panel



Hunter 450 Passage Aft Master Suite



Hunter 450 Passage Master Suite Desk



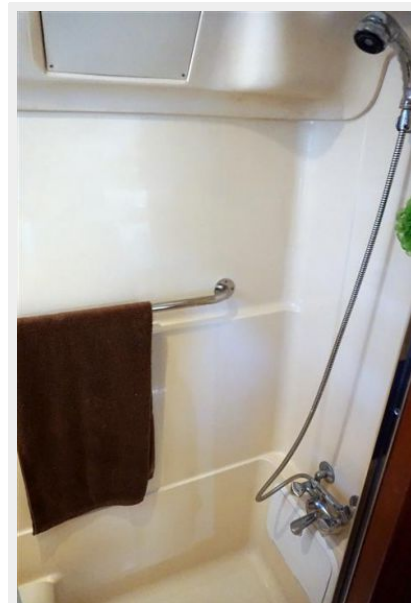
Hunter 450 Passage Master Suite Stbd Side



Hunter 450 Passage Master Shower Entry



Hunter 450 Passage Master Shower w/Tub



Hunter 450 Passage Master Hanging Locker



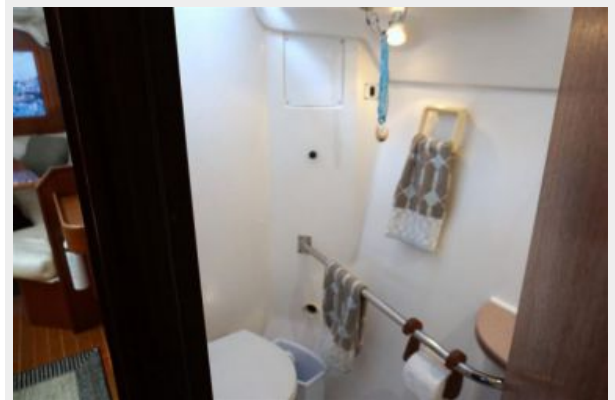
Hunter 450 Passage Master Head Entry



Hunter 450 Passage Master Sink



Hunter 450 Passage Master Electric Toilet



Hunter 450 Passage Cabin Stbd Side



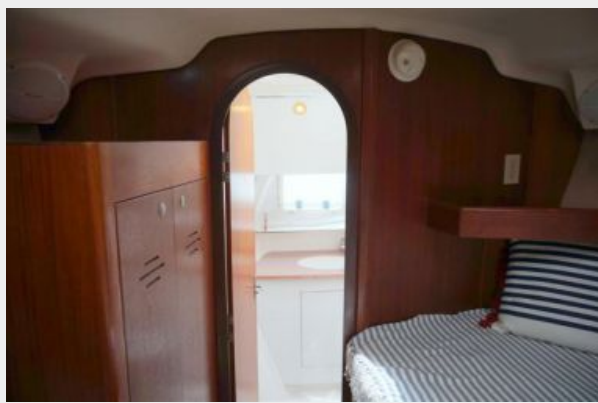
Hunter 450 Passage storage Under Portside Bed



Hunter 450 Passage VIP Hanging Locker



Hunter 450 Passage Walk-Thru to VIP Head



Hunter 450 Passage VIP Sink



Hunter 450 Passage VIP Stateroom Aft



Hunter 450 Passage VIP Stateroom



Hunter 450 Passage Cockpit



Hunter 450 Passage Helm



Hunter 450 Passage Wind & Depth



Hunter 450 Passage Port Winches



Hunter 450 Passage Stbd Winches



Hunter 450 Passage Bow



Hunter 450 Passage Anchor Windlass



Hunter 450 Passage Fore-Deck Looking Aft



Hunter 450 Passage NEW Cockpit Cushions



Hunter 450 Passage Aft Deck



Hunter 450 Passage Stern Seat



Hunter 450 Passage Swim Step



Hunter 450 Passage Fiberglass Arch



Hunter 450 Passage Engine Room



Hunter 450 Passage Jib & In-Mast Furler



Hunter 450 Passage Yanmar Diesel



Hunter 450 Passage Waiting For YOU



CONTACTS

Andrey Shestakov, leading yacht broker of the sales department of Shestakov Yacht Sales Inc. Shestakov Yacht Sales Inc., the official representative of the Miami/Fort Lauderdale FL headquarters.

Contact details

Email: andrey@shestakovyachtsales.com

Web: shestakovyachtsales.com/en/

Telephones

USA: +1(954)274-4435

Office hours

Monday – Saturday: **9:00 - 21:00** EDT

Sunday: **closed**

Address



Harbour Towne Marina, 850 NE 3rd St,
STE 213, Dania, FL 33004