

TIGHTEN UP 2 — CABO



Builder: CABO

Year Built: 2000

Model: Sport Fisherman

Price: PRICE ON APPLICATION

Location: United States

LOA: 45' 0" (13.72m)

Beam: 15' 8" (4.78m)

Max Draft: 3' 5" (1.04m)

Cruise Speed: 27 Kts. (31 MPH)

Max Speed: 32 Kts. (37 MPH)

Our experienced yacht broker, Andrey Shestakov, will help you choose and buy a yacht that best suits your needs **TIGHTEN UP 2 — CABO** from our catalogue. Presently, at Shestakov Yacht Sales Inc., we have a wide variety of yachts available on our sale's list. We also work in close contact with all the big yacht manufacturers from all over the world.

If you would like to buy a yacht **TIGHTEN UP 2 — CABO** or would like help answering any questions concerning purchasing, selling or chartering a yacht, please call **+1(954)274-4435**

TABLE OF CONTENTS

TABLE OF CONTENTS	2
SPECIFICATIONS	5
Overview	5
Basic Information	5
Dimensions	5
Speed, Capacities and Weight	5
Accommodations	5
Hull and Deck Information	6
Engine Information	6
DETAILED INFORMATION	7
Accommodations	7
Salon and Galley	7
Electrical	7
Electronics	7
Mechanical	7
Fishing Equipment and Other Features	8
Exclusions	8
Exclusions	8
Disclaimer	8
PHOTOS	10
Port Profile	10
Bow	10
Salon	10
Salon	10
Salon	10
Salon	10
Galley	11
Galley	11

Galley	11
Galley	11
Galley	11
Breaker Panels	11
Master Stateroom	12
Master Stateroom	12
Master Stateroom	12
Head	12
Head	12
Guest Stateroom	12
Guest Stateroom	13
Cockpit	13
Cockpit	13
Cockpit	13
Cockpit	13
Cockpit	13
Ice Maker	14
Helm	14
Helm	14
Helm	14
Helm	14
Engine Room	14
Engine Room.jpg	15
Generator	15
Tower	15
Stbd Quarter	15
Port Bow	15
Starboard Profile	15
Starboard Profile	16

Port Quarter	16
Port Profile	16
Transom	16
Helm	16
Cockpit	16
Transom	17
Port Profile	17
Starboard Profile	17
CONTACTS	18
Contact details	18
Telephones	18
Office hours	18
Address	18

SPECIFICATIONS

Overview

The 45' Cabo is one of the most desirable Express boats ever to be introduced to the market. Combining Fishing and Cruising this flagship express can do it all with an air conditioned helm, great electronics and low hours. She is ready to go!

Basic Information

Category: Sport Fisherman

Sub Category: Express

Model Year: 2000

Year Built: 2000

Country: United States

Registration #: AL-2681-SQ

Dimensions

LOA: 45' 0" (13.72m)

LWL: 45' 0" (13.72m)

Beam: 15' 8" (4.78m)

Max Draft: 3' 5" (1.04m)

MFG Length: 45' 0" (13.72m)

Speed, Capacities and Weight

Cruise Speed: 27 Kts. (31 MPH)

Max Speed: 32 Kts. (37 MPH)

Displacement: 33000 Pounds

Water Capacity: 100 Gallons

Fuel Capacity: 1000 Gallons

Accommodations

Total Cabins: 2

Hull and Deck Information

Hull Material: Fiberglass

Engine Information

Manufacturer: MAN

Model: 2848LE40

DETAILED INFORMATION

Accommodations

MASTER STATEROOM: Forward queen bed with storage and drawers underneath. Hanging locker, TV, access to head and rod lockers outboard.

GUEST STATEROOM: Private double bunk room with dresser drawers and storage under bottom bunk

Salon and Galley

- L shaped sofa with double sleeper and storage under
- Teak and holley flooring throughout
- Central vacuum
- Corian counter tops
- Norcold side by side double fridge-dual voltage
- Electric 2 burner stove
- Microwave
- Single sink with disposal
- Instant hot water dispenser
- Deep Freezer
- Entertainment system with surround sound and 32" TV

Electrical

Westerbeke Generator 12.5KW with 3000 hours

Electronics

- (2) VHF
- SIMRAD AP22 Auto/Pilot
- Furuno NavNet 3D 12" multifunction Radar/Sounder/Chart Plotter w/remote in tower 10"
- Underwater lights
- Fusion stereo with extra speakers at helm and cockpit
- SAT TV
- ACR Spotlight

Mechanical

- 800 HP V8 MAN engines -All services up to date
- 12.5 KW Generator
- Glendenning electronic controls
- Oil change system
- Engine room blowers
- Glendenning shore cable reel
- Eskimo Ice Chipper
- Air conditioned helm deck

Fishing Equipment and Other Features

- Live well in transom
- Bait rigging station
- Pipewelders Tower
- Insulated in-deck fishboxes (2)
- Eskimo ice chipper
- 10" NavNet display and VHF in tower
- Rupp outriggers
- Cockpit freezer
- Aft Station in cockpit
- Release Marine fighting chair w/rocket launcher
- Fresh and salt water wash downs in cockpit
- Anchor Pulpit and Windlass with anchor
- Palm beach style aluminum bow rail
- Helm deck has tackle storage drawers, ice maker, single lever engine controls and electric teaser reels. also large rod locker in overhead.

Exclusions

Owner's personal property

Exclusions

Owner's personal belongings.

Disclaimer

The Company offers the details of this vessel or yacht in good faith but cannot guarantee or warrant the accuracy of this information nor warrant the condition of the vessel. A buyer should instruct his representatives, agents, or his surveyors, to investigate such details as the buyer desires validated. This vessel or yacht is offered subject to prior sale, price change, or withdrawal

without notice.

PHOTOS

Port Profile



Bow



Salon



Salon



Salon



Salon



Galley



Galley



Galley



Galley



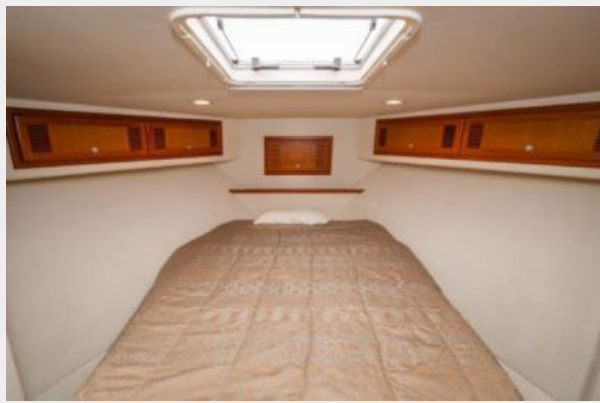
Galley



Breaker Panels



Master Stateroom



Master Stateroom



Master Stateroom



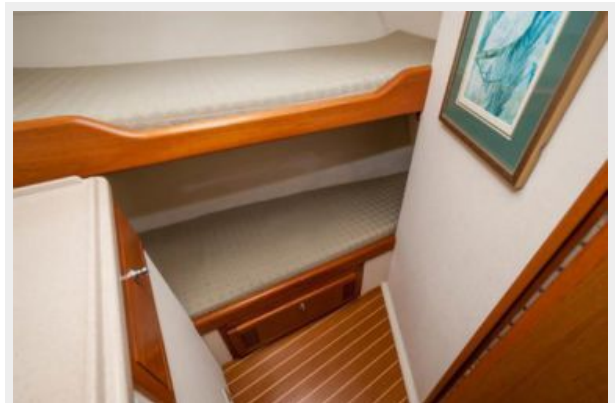
Head



Head



Guest Stateroom



Guest Stateroom



Cockpit



Cockpit



Cockpit



Cockpit



Cockpit



Ice Maker



Helm



Helm



Helm



Helm



Engine Room



Engine Room.jpg



Generator



Tower



Stbd Quarter



Starboard Profile



Port Bow



Starboard Profile



Port Quarter



Port Profile



Transom



Helm



Cockpit



Transom



Port Profile



Starboard Profile



CONTACTS

Andrey Shestakov, leading yacht broker of the sales department of Shestakov Yacht Sales Inc. Shestakov Yacht Sales Inc., the official representative of the Miami/Fort Lauderdale FL headquarters.

Contact details

Email: andrey@shestakovyachtsales.com

Web: shestakovyachtsales.com/en/

Telephones

USA: +1(954)274-4435

Office hours

Monday – Saturday: **9:00 - 21:00** EDT

Sunday: **closed**

Address



Harbour Towne Marina, 850 NE 3rd St,
STE 213, Dania, FL 33004