

PERFECT REMEDY — SEALINE



Builder: SEALINE

Year Built: 2004

Model: Motor Yacht

Price: PRICE ON APPLICATION

Location: United States

LOA: 47' 0" (14.33m)

Beam: 14' 2" (4.32m)

Max Draft: 3' 10" (1.17m)

Cruise Speed: 24 Kts. (28 MPH)

Max Speed: 28 Kts. (32 MPH)

Our experienced yacht broker, Andrey Shestakov, will help you choose and buy a yacht that best suits your needs **Perfect Remedy — SEALINE** from our catalogue. Presently, at Shestakov Yacht Sales Inc., we have a wide variety of yachts available on our sale's list. We also work in close contact with all the big yacht manufacturers from all over the world.

If you would like to buy a yacht **Perfect Remedy — SEALINE** or would like help answering any questions concerning purchasing, selling or chartering a yacht, please call **+1(954)274-4435**

TABLE OF CONTENTS

| | |
|------------------------------|----|
| TABLE OF CONTENTS | 2 |
| SPECIFICATIONS | 5 |
| Overview | 5 |
| Basic Information | 5 |
| Dimensions | 5 |
| Speed, Capacities and Weight | 5 |
| Accommodations | 6 |
| Hull and Deck Information | 6 |
| Engine Information | 6 |
| DETAILED INFORMATION | 7 |
| Walk Through | 7 |
| Salon | 8 |
| Galley | 8 |
| Master Stateroom | 9 |
| Guest Stateroom | 9 |
| Guest Head | 9 |
| Crew Quarters | 10 |
| Electronics/Navigation | 10 |
| Deck Equipment | 10 |
| Hull | 11 |
| Flybridge | 11 |
| Other Features | 11 |
| Engine Room | 12 |
| Brokers Comments | 13 |
| Exclusions | 13 |
| Exclusions | 13 |
| Disclaimer | 13 |
| PHOTOS | 14 |

| | |
|---------------------------------|----|
| Salon | 14 |
| Aft Salon | 14 |
| Aft Salon | 14 |
| Port Salon | 14 |
| Port Salon | 14 |
| Port Bar | 14 |
| Port Bar Area | 15 |
| Starboard Salon | 15 |
| Main Distribution Panel | 15 |
| Salon Fridge | 15 |
| Galley | 15 |
| Galley | 15 |
| Sub Zero Fridge | 16 |
| Galley Floor Storage | 16 |
| Galley Floor Storage 2.JPG | 16 |
| Factory Galley Photo | 16 |
| Walkway to Cabins | 17 |
| Walkway to Salon | 17 |
| Starboard Master 2.JPG | 17 |
| Starboard Master | 17 |
| Master Head Separate Shower | 17 |
| Master Head | 17 |
| Forward VIP | 18 |
| Port Head | 18 |
| Factory Captains Quarters Photo | 18 |
| Lower Helm | 18 |
| Lower Helm | 18 |
| Lower Helm Seating | 18 |
| Upgraded Digital Controls | 19 |

| | |
|--|-----------|
| Forward Bidge | 19 |
| Aft Bridge | 19 |
| Upper Helm | 19 |
| Cockpit Grill | 19 |
| Upgraded Kahlenberg horns | 19 |
| Forward Deck | 20 |
| Passerelle 600lb | 20 |
| Factory Cockpit Photo | 20 |
| Cockpit | 20 |
| Props, shafts struts and attachments for Sealift | 20 |
| Clean Engine Room | 20 |
| Out of the Water | 21 |
| AB Rib | 21 |
| At Dock | 21 |
| Sea Lift 800 lb | 21 |
| Fast Idle | 21 |
| Port Profile | 21 |
| Port Aft Quarter | 22 |
| Starboard Profile | 22 |
| Appalachicola Bay at fast cruise (22 kts, 32 gals an hr) | 22 |
| Starboard Profile with Aft Canvas | 22 |
| Running | 22 |
| Factory Running Shot | 22 |
| Cabin Layout | 23 |
| CONTACTS | 24 |
| Contact details | 24 |
| Telephones | 24 |
| Office hours | 24 |
| Address | 24 |

SPECIFICATIONS

Overview

Sealine's T-47 Flybridge earned a reputation for innovation, seaworthiness, and distinctive styling. This **LOADED** 2 Stateroom / 2 Head vessel with Captain's Quarters has been **consistently well maintained by her one owner** who custom ordered her new. She would make a great local cruiser or a fantastic great loop boat which she has previously performed. She is fully equipped with all the cruising amenities one would want including a **Sealift hydraulic tender davit** for the included **AB Rib with Honda 20 hp four stroke**, a **Cooney Passerelle / Crane** and a **Yacht Controller** –which allows wireless remote control of your yacht. She also has a **Bow Thruster**, **SAT TV & SAT Internet**, upgraded **ZF Electronic Controls** and much, much more. The owner is motivated and wants her sold. A recent detail was just performed. Call for your easy showing today!

Basic Information

Category: Motor Yacht

Model Year: 2004

Year Built: 2004

Country: United States

Fly Bridge: Yes

Cockpit: Yes

Dimensions

LOA: 47' 0" (14.33m)

Beam: 14' 2" (4.32m)

Max Draft: 3' 10" (1.17m)

Speed, Capacities and Weight

Cruise Speed: 24 Kts. (28 MPH)

Max Speed: 28 Kts. (32 MPH)

Displacement: 31973 Pounds

Water Capacity: 160 Gallons

Fuel Capacity: 514 Gallons

Accommodations

Total Cabins: 2

Crew Cabin: 1

Crew Heads: 1

Hull and Deck Information

Hull Material: Fiberglass

Engine Information

Manufacturer: Cummins

Model: 480 HP EC w/ electronic controls

Engine Type: Inboard

Fuel Type: Diesel

DETAILED INFORMATION

Walk Through

Stepping aboard via the large swim platform with teak decking you enter into the cockpit. On the transom there is an adjustable Cooney Passerelle / Crane rated for 660 lbs. and a hydraulic Sealift rated for 800 lbs. that is used with the included 2005 AB 9'6" Tender. The cockpit features a grill and sink to port, an upgraded icemaker to starboard, an L-shaped lounge seat, teak decks, and a wonderful overhang that adds to the fine lines of the yacht while providing the function of shading the cockpit while providing ingenious recessed storage above. Access to a crew's quarter is found by easily lifting a corner of the L-shaped lounge. A set of steps leads to a fully appointed area that can be used for crew, storage, or a nicely private third sleeping area. Marine head, recessed vanity and sink, A/C and heat and full berth make these quarters quite practical. Returning to the cockpit there is a large in deck hatch that raises providing access to a separate generator/pump room. Engine room access can be gained through a bulkhead door forward in the pump room and there are also access hatches in the salon sole.

Returning to the cockpit there is a set of molded fiberglass stairs with teak decking that lead to the flybridge. The flybridge is set up with an abundant amount of sunning and lounging space with clever touches like flip up lounge backs for the large sun-pad found on the overhang. A fully equipped helm with companion seats are also found on the bridge, u-shaped seating for six, teak flooring, fridge and drink holders, etc. Moving inside from the cockpit below, large well-crafted salon doors easily slide open to a warm and inviting salon. Rich upgraded fabrics in tasteful neutrals compliment the high gloss wood interior and marble bar top. A u-shaped sofa done in upgraded soft tan leather with storage underneath can be found to starboard. To port and aft is a built in entertainment center featuring a 20" flatscreen TV. The center also houses the Bose LifeStyle 30 Surround Sound System and upgraded freezer. Across from the sofa is a salon chair. Also opposite of the sofa is a marble top bar unit. Forward in the salon is a raised lower helm station with seating for captain and companion as well as a myriad of flush mounted electronics detailed below. Both the helm and bridge feature upgraded ZF controls. Moving forward from the salon is a galley that is a step down and to port. An abundance of natural light makes this a welcome place to be while preparing food or drinks. Rich high gloss cherry cabinetry continues as well as teak and holly flooring. Corian counter tops, subzero drawer refrigerators, modular storage drawer system under the floor, and other high quality features abound. Forward of the galley is a mid-ship Master Stateroom that has a large walk around double berth, hanging lockers and vanity with drawers all done in high gloss cherry wood. A 15' Flat Screen TV along with a separate stereo and DVD player are also found in the master. An ensuite head features teak flooring, marble topped vanity, quiet flush toilet and separate stall shower. Forward of the master stateroom is the VIP stateroom featuring a second large walk around double berth w/ storage underneath. A third flatscreen 15' TV along with a stereo and DVD player can be found in this guest stateroom. Access to the guest head is available directly

from the forward stateroom as well as a door in the companionway. Like the master head, teak and holly flooring as well as a marble vanity add an elegant touch along with the functionality of a second stall shower.

Salon

- Marble top bar
- Entertainment center with refrigerator/ice maker
- KVH Trac Vision TV system
- U-shaped settee with storage under
- 6-Disc CD player with (4) speakers
- Surround sound stereo with (6) speakers
- Overhead lighting
- Floor hatches to engine room
- Electrical panel
- Fuel shut off valves in steps
- Blinds
- Salon Chair
- Teak floor covering
- Freezer in salon cabinet
- Hinged chart/work/electronics table
- Fire extinguisher
- Electrical panel for 220V AC circuits
- Bose Life Style surround sound
- Panasonic 20" LCD TV//DVD
- (2) Electric opening windows

Galley

- (2) Sub Zero refrigerator drawers
- Stove, (2) burner cook top
- Convection microwave
- Pressurized fresh water
- Port light
- Overhead lighting
- SS sink with Corian lid
- Teak & holly floor covering
- Fire extinguisher
- Corian counter
- Modular storage drawer system
- Exhaust fan

Master Stateroom

Head with electric quiet fresh water flush, shower with sliding door, opening port light, overhead lighting, marble topped vanity, storage cupboards, shaver socket, mixer shower, automatic shower drain.

- Double berth with storage
- 15" LCD screen T.V.
- Outlet
- Sony stereo system
- Hanging locker (aft)
- Wardrobe with mirrored door
- (2) Opening port lights
- Overhead lighting
- Blinds
- Carpeting
- Vanity with drawers/mirrors
- Reading lights
- High gloss Cherry wood paneling
- Custom bedcovers

Guest Stateroom

- Double berth with storage under
- LCD screen T.V.
- Stereo system
- DVD
- Reading lights
- Corner cupboards at bed head
- Locker port & starboard
- Overhead lighting
- Mirror on forward bulkhead
- Vanity with port & starboard mirror
- Opening port light
- Custom bed covers

Guest Head

Guest head with large toilet compartment with adjoining shower cubicle w/ access to salon and forward cabin. Marble topped vanity, mirror, shaver socket, electric quiet-flush toilet, hinged shower door, overhead lighting, exhaust fan, opening port light, automatic pump.

Crew Quarters

- Single berth
- Electric quiet flush head
- Sink
- Storage
- Door to lazarette
- Opening port light
- Freezer

Electronics/Navigation

- Raymarine ST60 TriData (Upper & Lower Helms)
- Raymarine ST6001+ Auto Pilot (Upper & Lower Helms)
- Raymarine RL80C Radar/GPS Plotter (Upper & Lower Helms)
- Upgraded Radar with Open Array
- Raymarine VHF (Upper & Lower Helms)
- Digital Cummins Engine Gauge System (Upper & Lower Helms)
- **ZF Commander Electronic Controls**
- **KVH Sat TV with one Receiver**
- **KvVH Trac Net Satellite**
- Bow Thruster with Controls (Upper and Lower Helms)
- Remote Spotlight (Upper and Lower)
- Trim Tabs
- Chart Storage in overhead locker
- Adjustable Helmsman's & Navigator's Seats
- **Yacht Controller – Wireless Remote Control of Your Yacht**

Deck Equipment

- Low level deck light
- SS hand rail
- Self-draining chain and fender storage
- Fenders
- Hatch
- ACR 406 EPIRB
- Stratoglass – 3 Forward Panels for Bridge Bimini
- Cockpit icemaker
- Full set nav lights
- SS ensign socket and staff
- Cockpit hatch
- SS fendering strip

- Sun pad
- Upgraded Kahlenberg Horns
- Cockpit Grill and Sink

Hull

- Hot/cold transom shower
- Concealed anchor stowage
- Integral teak swim platform & bridge
- Bow pulpit
- Fresh water washdown on bow
- Molded non-slip deck
- 8-deck cleats
- Bow fairlead
- Curved glass windscreen & side wind
- Teak laid self-draining cockpit
- Cockpit entertainment center
- **Cooney Passerelle / Crane – Rated for 660 lbs**

Flybridge

- Full Electronics
- 10-Disc CD player
- Teak deck
- SS handrails
- Full instrumentation
- ZF Electronic Controls
- Stratoglass – 3 Forward Panels for Bridge Bimini
- Bow Thruster
- Double helm seat
- Bipod winged radar mast
- L shaped seat
- Sun-pad with adjustable backrests
- Tinted, curved windshield
- Drink holders
- Bimini top
- Refrigerator and ice maker

Other Features

- Electric windlass
- Adjustable trim tabs with indicator
- Speed and depth indicator
- (2) Compass
- Engine hour meters
- Windscreen wipers
- Deluxe Teak package, cockpit & flybridge
- Bow thruster
- Hailer
- Full shore support system w/ Glendinning Cablemaster
- Hydraulic steering
- Fuel gauges at both stations
- Clock & barometer in salon
- Remote control spotlight
- Water gauge
- Aft docking lights
- 4-Zone upgraded reverse cycle air/heat
- Teak interior floors in the salon, helm and companionway
- **2005 AB 2.90VS RIB with 20 HP Honda 4 stroke**
- **Sealift Hydraulic Tender Lift**
- **Spare props**
- **Cummins spare part kit**
- **Kohler spare parts kit**
- **Yacht Controller – Wireless Remote Control of Your Yacht**

Engine Room

- Auto fire control system
- Fuel filters
- Engine room light
- Blower
- Glendinning Cablemaster
- Oil transfer system
- Easy sole access from salon
- (4) Batteries with switch
- Engine room sound insulation
- Bilge pump auto and manual
- SS fuel tank
- Kohler 11kw Generator
- 45 amp battery charger
- Battery charger

Brokers Comments

Sealine's t-47 earned a reputation for innovation, seaworthiness, and distinctive styling. This vessel has been consistently well maintained **by her one owner who ordered her new** and would make a great local cruiser or a fantastic great loop boat, which she has previously performed. A recent detail makes her shine.

All services records since new are easily available

Exclusions

Owners personal items

Exclusions

Owner's personal belongings.

Disclaimer

The Company offers the details of this vessel or yacht in good faith but cannot guarantee or warrant the accuracy of this information nor warrant the condition of the vessel. A buyer should instruct his representatives, agents, or his surveyors, to investigate such details as the buyer desires validated. This vessel or yacht is offered subject to prior sale, price change, or withdrawal without notice.

PHOTOS

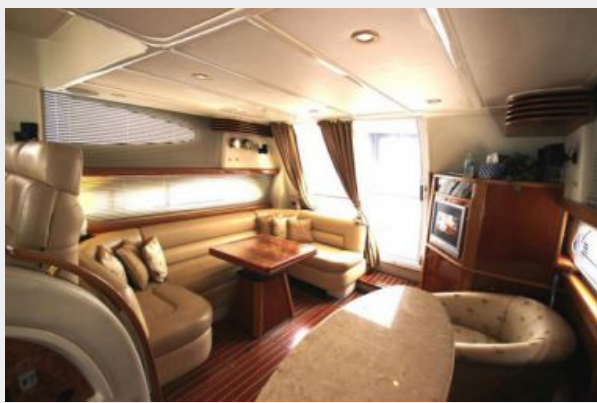
Salon



Aft Salon



Aft Salon



Port Salon



Port Salon



Port Bar



Port Bar Area



Starboard Salon



Salon Fridge



Main Distribution Panel



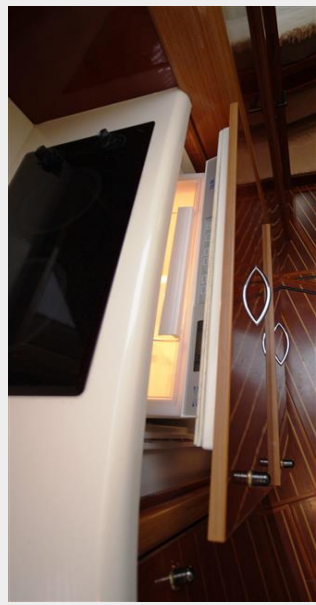
Galley



Galley



Sub Zero Fridge



Galley Floor Storage



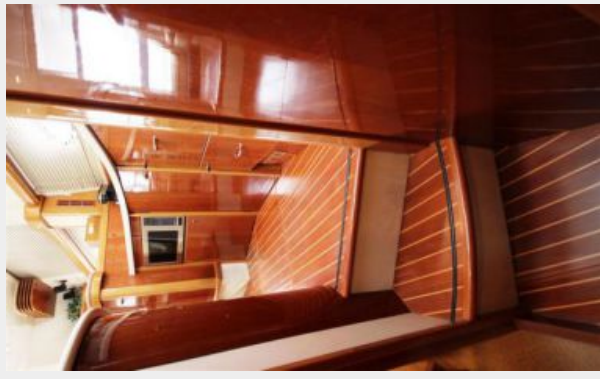
Galley Floor Storage 2.JPG



Factory Galley Photo



Walkway to Salon



Walkway to Cabins



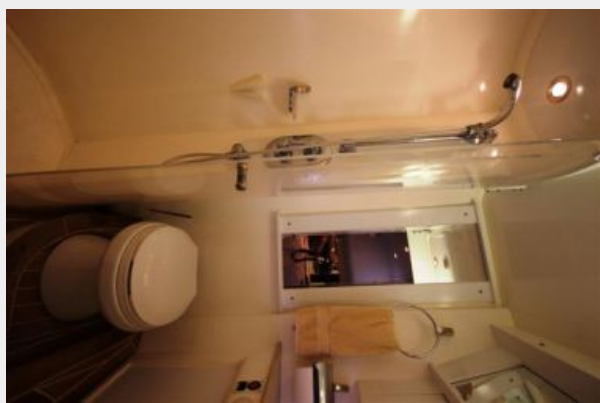
Starboard Master 2.JPG



Starboard Master



Master Head Separate Shower



Master Head



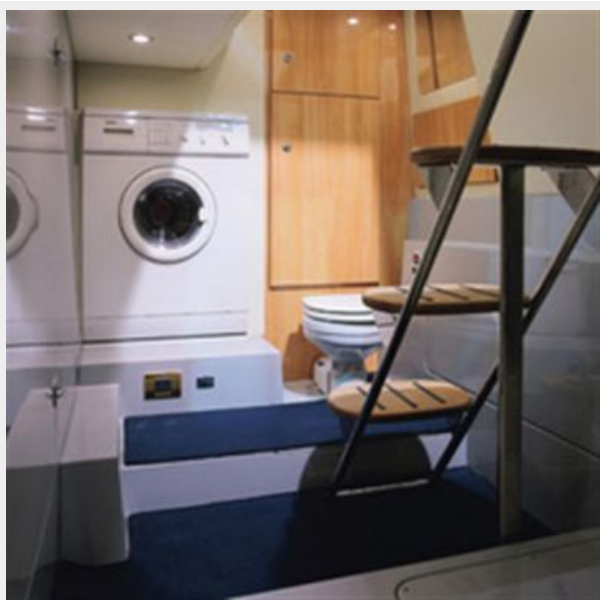
Forward VIP



Port Head



Factory Captains Quarters Photo



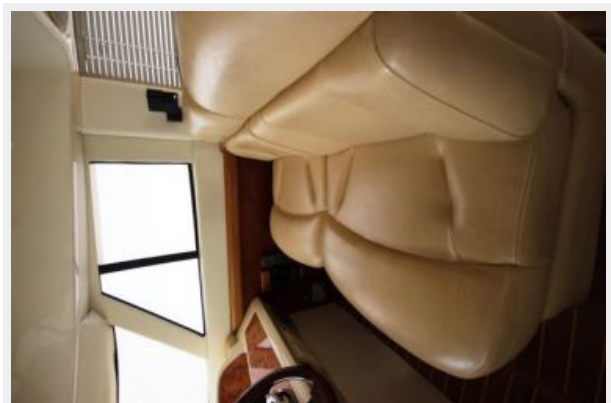
Lower Helm



Lower Helm



Lower Helm Seating



Upgraded Digital Controls



Forward Bidge



Aft Bridge



Upper Helm



Cockpit Grill



Upgraded Kahlenberg horns



Forward Deck



Passerelle 600lb



Factory Cockpit Photo



Cockpit



Clean Engine Room



Props, shafts struts and attachments for Sealift



Out of the Water



AB Rib



Sea Lift 800 lb



At Dock



Fast Idle



Port Profile



Port Aft Quarter



Starboard Profile



Starboard Profile with Aft Canvas



Appalachicola Bay at fast cruise (22 kts, 32 gals an hr)



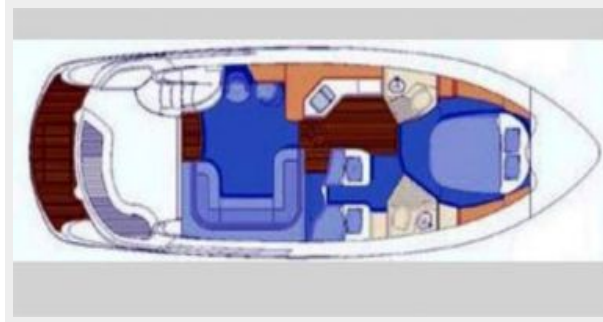
Running



Factory Running Shot



Cabin Layout



CONTACTS

Andrey Shestakov, leading yacht broker of the sales department of Shestakov Yacht Sales Inc. Shestakov Yacht Sales Inc., the official representative of the Miami/Fort Lauderdale FL headquarters.

Contact details

Email: andrey@shestakovyachtsales.com

Web: shestakovyachtsales.com/en/

Telephones

USA: +1(954)274-4435

Office hours

Monday – Saturday: **9:00 - 21:00** EDT

Sunday: **closed**

Address



Harbour Towne Marina, 850 NE 3rd St,
STE 213, Dania, FL 33004