

PERFECT REMEDY — SEALINE



Судостроитель: SEALINE

Год постройки: 2004

Модель: Моторная яхта

Цена: **ЦЕНА ЯХТЫ ПО ЗАПРОСУ**

Местонахождение: United States

Длина общая: 47' 0" (14.33m)

Ширина: 14' 2" (4.32m)

Макс. осадка: 3' 10" (1.17m)

Крейс. скорость: 24 Kts. (28 MPH)

Макс. скорость: 28 Kts. (32 MPH)

Купить **Perfect Remedy — SEALINE** а также выбрать подходящую вам яхту из нашего каталога яхт вам поможет опытный яхтенный брокер Андрей Шестаков. На сегодняшний день компания **Shestakov Yacht Sales Inc.** имеет большое количество яхт в собственном списке продаж, а также тесно сотрудничает со всеми крупными яхтенными производителями по всему миру.

Для того чтобы купить яхту **Perfect Remedy — SEALINE** а также проконсультироваться по любому вопросу связанному с покупкой, продажей, чартером яхт позвоните по телефону **+7(918)465-66-44**.

ОГЛАВЛЕНИЕ

ОГЛАВЛЕНИЕ	2
ХАРАКТЕРИСТИКИ	5
Обзор	5
Основная информация	5
Размеры	5
Скорость, вместимость и масса	5
Размещение	6
Корпус и палуба	6
Информация о двигателе	6
ПОДРОБНОЕ ОПИСАНИЕ	7
Walk Through	7
Salon	8
Galley	8
Master Stateroom	9
Guest Stateroom	9
Guest Head	9
Crew Quarters	10
Electronics/Navigation	10
Deck Equipment	10
Hull	11
Flybridge	11
Other Features	11
Engine Room	12
Brokers Comments	13
Exclusions	13
Исключения	13
Отказ от ответственности	13
ФОТОГРАФИИ	14

Salon	14
Aft Salon	14
Aft Salon	14
Port Salon	14
Port Salon	14
Port Bar	14
Port Bar Area	15
Starboard Salon	15
Main Distribution Panel	15
Salon Fridge	15
Galley	15
Galley	15
Sub Zero Fridge	16
Galley Floor Storage	16
Galley Floor Storage 2.JPG	16
Factory Galley Photo	16
Walkway to Cabins	17
Walkway to Salon	17
Starboard Master 2.JPG	17
Starboard Master	17
Master Head Separate Shower	17
Master Head	17
Forward VIP	18
Port Head	18
Factory Captains Quarters Photo	18
Lower Helm	18
Lower Helm	18
Lower Helm Seating	18
Upgraded Digital Controls	19

Forward Bidge	19
Aft Bridge	19
Upper Helm	19
Cockpit Grill	19
Upgraded Kahlenberg horns	19
Forward Deck	20
Passerelle 600lb	20
Factory Cockpit Photo	20
Cockpit	20
Props, shafts struts and attachments for Sealift	20
Clean Engine Room	20
Out of the Water	21
AB Rib	21
At Dock	21
Sea Lift 800 lb	21
Fast Idle	21
Port Profile	21
Port Aft Quarter	22
Starboard Profile	22
Appalachicola Bay at fast cruise (22 kts, 32 gals an hr)	22
Starboard Profile with Aft Canvas	22
Running	22
Factory Running Shot	22
Cabin Layout	23
КОНТАКТЫ	24
Контактная информация	24
Телефоны	24
Время работы	24
Адрес	24

ХАРАКТЕРИСТИКИ

Обзор

Sealine's T-47 Flybridge earned a reputation for innovation, seaworthiness, and distinctive styling. This **LOADED** 2 Stateroom / 2 Head vessel with Captain's Quarters has been **consistently well maintained by her one owner** who custom ordered her new. She would make a great local cruiser or a fantastic great loop boat which she has previously performed. She is fully equipped with all the cruising amenities one would want including a **Sealift hydraulic tender davit** for the included **AB Rib with Honda 20 hp four stroke**, a **Cooney Passerelle / Crane** and a **Yacht Controller** –which allows wireless remote control of your yacht. She also has a **Bow Thruster**, **SAT TV & SAT Internet**, upgraded **ZF Electronic Controls** and much, much more. The owner is motivated and wants her sold. A recent detail was just performed. Call for your easy showing today!

Основная информация

Тип судна: Моторная яхта	Модельный год: 2004
Год постройки: 2004	Страна: United States
Открытая палуба мостика: Да	Кубрик: Да

Размеры

Длина общая: 47' 0" (14.33m)	Ширина: 14' 2" (4.32m)
Макс. осадка: 3' 10" (1.17m)	

Скорость, вместимость и масса

Крейс. скорость: 24 Kts. (28 MPH)	Макс. скорость: 28 Kts. (32 MPH)
Водоизмещение: 31973 Pounds	Вместимость воды: 160 Gallons
Объем топливного бака: 514 Gallons	

Размещение

Всего кают: 2

Каюты экипажа: 1

Комм. состав экипажа: 1

Корпус и палуба

Материал корпуса: Fiberglass

Информация о двигателе

Производитель: Cummins

Модель: 480 HP EC w/ electronic controls

Тип двигателя: Inboard

Тип топлива: Diesel

ПОДРОБНОЕ ОПИСАНИЕ

Walk Through

Stepping aboard via the large swim platform with teak decking you enter into the cockpit. On the transom there is an adjustable Cooney Passerelle / Crane rated for 660 lbs. and a hydraulic Sealift rated for 800 lbs. that is used with the included 2005 AB 9'6" Tender. The cockpit features a grill and sink to port, an upgraded icemaker to starboard, an L-shaped lounge seat, teak decks, and a wonderful overhang that adds to the fine lines of the yacht while providing the function of shading the cockpit while providing ingenious recessed storage above. Access to a crew's quarter is found by easily lifting a corner of the L-shaped lounge. A set of steps leads to a fully appointed area that can be used for crew, storage, or a nicely private third sleeping area. Marine head, recessed vanity and sink, A/C and heat and full berth make these quarters quite practical. Returning to the cockpit there is a large in deck hatch that raises providing access to a separate generator/pump room. Engine room access can be gained through a bulkhead door forward in the pump room and there are also access hatches in the salon sole.

Returning to the cockpit there is a set of molded fiberglass stairs with teak decking that lead to the flybridge. The flybridge is set up with an abundant amount of sunning and lounging space with clever touches like flip up lounge backs for the large sun-pad found on the overhang. A fully equipped helm with companion seats are also found on the bridge, u-shaped seating for six, teak flooring, fridge and drink holders, etc. Moving inside from the cockpit below, large well-crafted salon doors easily slide open to a warm and inviting salon. Rich upgraded fabrics in tasteful neutrals compliment the high gloss wood interior and marble bar top. A u-shaped sofa done in upgraded soft tan leather with storage underneath can be found to starboard. To port and aft is a built in entertainment center featuring a 20" flatscreen TV. The center also houses the Bose LifeStyle 30 Surround Sound System and upgraded freezer. Across from the sofa is a salon chair. Also opposite of the sofa is a marble top bar unit. Forward in the salon is a raised lower helm station with seating for captain and companion as well as a myriad of flush mounted electronics detailed below. Both the helm and bridge feature upgraded ZF controls. Moving forward from the salon is a galley that is a step down and to port. An abundance of natural light makes this a welcome place to be while preparing food or drinks. Rich high gloss cherry cabinetry continues as well as teak and holly flooring. Corian counter tops, subzero drawer refrigerators, modular storage drawer system under the floor, and other high quality features abound. Forward of the galley is a mid-ship Master Stateroom that has a large walk around double berth, hanging lockers and vanity with drawers all done in high gloss cherry wood. A 15' Flat Screen TV along with a separate stereo and DVD player are also found in the master. An ensuite head features teak flooring, marble topped vanity, quiet flush toilet and separate stall shower. Forward of the master stateroom is the VIP stateroom featuring a second large walk around double berth w/ storage underneath. A third flatscreen 15' TV along with a stereo and DVD player can be found in this guest stateroom. Access to the guest head is available directly

from the forward stateroom as well as a door in the companionway. Like the master head, teak and holly flooring as well as a marble vanity add an elegant touch along with the functionality of a second stall shower.

Salon

- Marble top bar
- Entertainment center with refrigerator/ice maker
- KVH Trac Vision TV system
- U-shaped settee with storage under
- 6-Disc CD player with (4) speakers
- Surround sound stereo with (6) speakers
- Overhead lighting
- Floor hatches to engine room
- Electrical panel
- Fuel shut off valves in steps
- Blinds
- Salon Chair
- Teak floor covering
- Freezer in salon cabinet
- Hinged chart/work/electronics table
- Fire extinguisher
- Electrical panel for 220V AC circuits
- Bose Life Style surround sound
- Panasonic 20" LCD TV//DVD
- (2) Electric opening windows

Galley

- (2) Sub Zero refrigerator drawers
- Stove, (2) burner cook top
- Convection microwave
- Pressurized fresh water
- Port light
- Overhead lighting
- SS sink with Corian lid
- Teak & holly floor covering
- Fire extinguisher
- Corian counter
- Modular storage drawer system
- Exhaust fan

Master Stateroom

Head with electric quiet fresh water flush, shower with sliding door, opening port light, overhead lighting, marble topped vanity, storage cupboards, shaver socket, mixer shower, automatic shower drain.

- Double berth with storage
- 15" LCD screen T.V.
- Outlet
- Sony stereo system
- Hanging locker (aft)
- Wardrobe with mirrored door
- (2) Opening port lights
- Overhead lighting
- Blinds
- Carpeting
- Vanity with drawers/mirrors
- Reading lights
- High gloss Cherry wood paneling
- Custom bedcovers

Guest Stateroom

- Double berth with storage under
- LCD screen T.V.
- Stereo system
- DVD
- Reading lights
- Corner cupboards at bed head
- Locker port & starboard
- Overhead lighting
- Mirror on forward bulkhead
- Vanity with port & starboard mirror
- Opening port light
- Custom bed covers

Guest Head

Guest head with large toilet compartment with adjoining shower cubicle w/ access to salon and forward cabin. Marble topped vanity, mirror, shaver socket, electric quiet-flush toilet, hinged shower door, overhead lighting, exhaust fan, opening port light, automatic pump.

Crew Quarters

- Single berth
- Electric quiet flush head
- Sink
- Storage
- Door to lazarette
- Opening port light
- Freezer

Electronics/Navigation

- Raymarine ST60 TriData (Upper & Lower Helms)
- Raymarine ST6001+ Auto Pilot (Upper & Lower Helms)
- Raymarine RL80C Radar/GPS Plotter (Upper & Lower Helms)
- Upgraded Radar with Open Array
- Raymarine VHF (Upper & Lower Helms)
- Digital Cummins Engine Gauge System (Upper & Lower Helms)
- **ZF Commander Electronic Controls**
- **KVH Sat TV with one Receiver**
- **KvVH Trac Net Satellite**
- Bow Thruster with Controls (Upper and Lower Helms)
- Remote Spotlight (Upper and Lower)
- Trim Tabs
- Chart Storage in overhead locker
- Adjustable Helmsman's & Navigator's Seats
- **Yacht Controller – Wireless Remote Control of Your Yacht**

Deck Equipment

- Low level deck light
- SS hand rail
- Self-draining chain and fender storage
- Fenders
- Hatch
- ACR 406 EPIRB
- Stratoglass – 3 Forward Panels for Bridge Bimini
- Cockpit icemaker
- Full set nav lights
- SS ensign socket and staff
- Cockpit hatch
- SS fendering strip

- Sun pad
- Upgraded Kahlenberg Horns
- Cockpit Grill and Sink

Hull

- Hot/cold transom shower
- Concealed anchor stowage
- Integral teak swim platform & bridge
- Bow pulpit
- Fresh water washdown on bow
- Molded non-slip deck
- 8-deck cleats
- Bow fairlead
- Curved glass windscreen & side wind
- Teak laid self-draining cockpit
- Cockpit entertainment center
- **Cooney Passerelle / Crane – Rated for 660 lbs**

Flybridge

- Full Electronics
- 10-Disc CD player
- Teak deck
- SS handrails
- Full instrumentation
- ZF Electronic Controls
- Stratoglass – 3 Forward Panels for Bridge Bimini
- Bow Thruster
- Double helm seat
- Bipod winged radar mast
- L shaped seat
- Sun-pad with adjustable backrests
- Tinted, curved windshield
- Drink holders
- Bimini top
- Refrigerator and ice maker

Other Features

- Electric windlass
- Adjustable trim tabs with indicator
- Speed and depth indicator
- (2) Compass
- Engine hour meters
- Windscreen wipers
- Deluxe Teak package, cockpit & flybridge
- Bow thruster
- Hailer
- Full shore support system w/ Glendinning Cablemaster
- Hydraulic steering
- Fuel gauges at both stations
- Clock & barometer in salon
- Remote control spotlight
- Water gauge
- Aft docking lights
- 4-Zone upgraded reverse cycle air/heat
- Teak interior floors in the salon, helm and companionway
- **2005 AB 2.90VS RIB with 20 HP Honda 4 stroke**
- **Sealift Hydraulic Tender Lift**
- **Spare props**
- **Cummins spare part kit**
- **Kohler spare parts kit**
- **Yacht Controller – Wireless Remote Control of Your Yacht**

Engine Room

- Auto fire control system
- Fuel filters
- Engine room light
- Blower
- Glendinning Cablemaster
- Oil transfer system
- Easy sole access from salon
- (4) Batteries with switch
- Engine room sound insulation
- Bilge pump auto and manual
- SS fuel tank
- Kohler 11kw Generator
- 45 amp battery charger
- Battery charger

Brokers Comments

Sealine's t-47 earned a reputation for innovation, seaworthiness, and distinctive styling. This vessel has been consistently well maintained **by her one owner who ordered her new** and would make a great local cruiser or a fantastic great loop boat, which she has previously performed. A recent detail makes her shine.

All services records since new are easily available

Exclusions

Owners personal items

Исключения

При продаже яхты исключаются личные вещи владельца.

Отказ от ответственности

Компания предоставляет описание судна или яхты добросовестно, но не может гарантировать точность этой информации, а также не ручается за техническое состояние. Покупатель должен проинструктировать своих агентов или оценщиков исследовать представленную информацию более подробно, по собственному желанию. Продажа судна или яхты, изменение цены или снятие с продажи будет происходить без предварительного уведомления.

ФОТОГРАФИИ

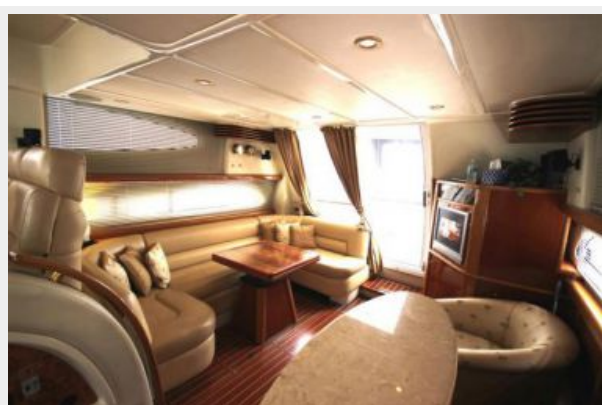
Salon



Aft Salon



Aft Salon



Port Salon



Port Salon



Port Bar



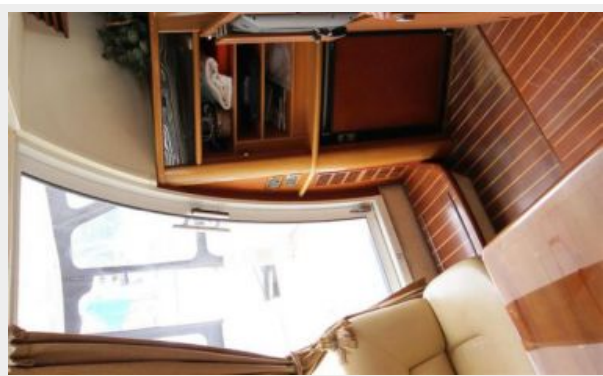
Port Bar Area



Starboard Salon



Salon Fridge



Main Distribution Panel



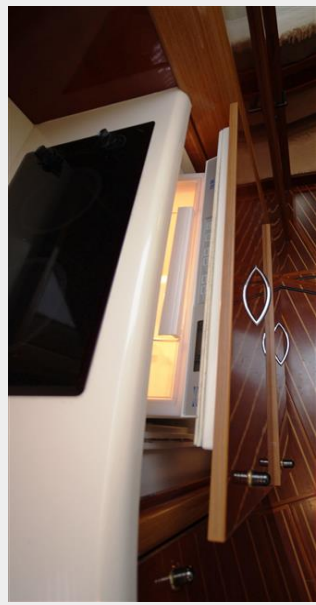
Galley



Galley



Sub Zero Fridge



Galley Floor Storage



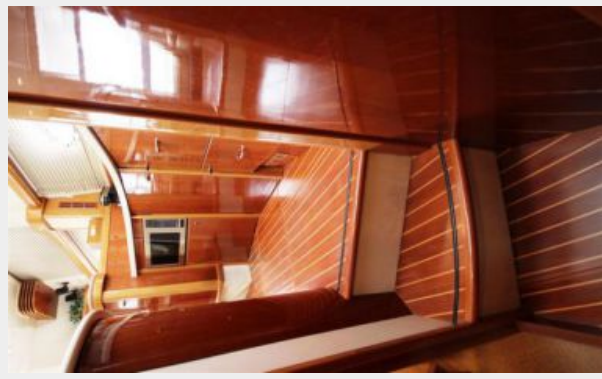
Galley Floor Storage 2.JPG



Factory Galley Photo



Walkway to Salon



Walkway to Cabins



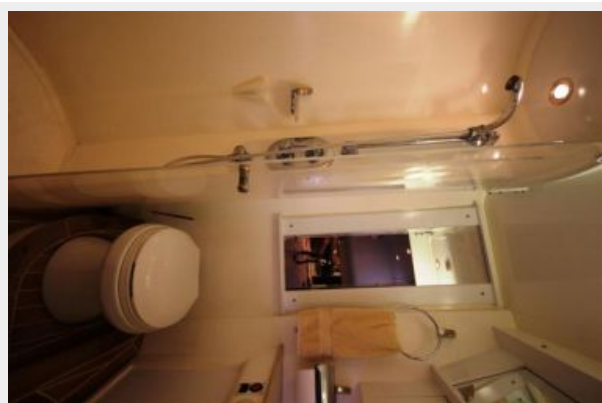
Starboard Master 2.JPG



Starboard Master



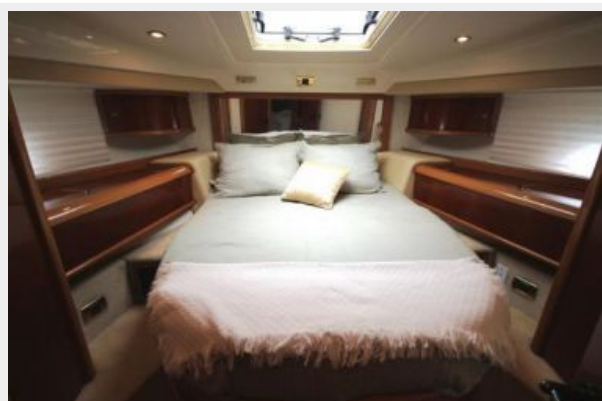
Master Head Separate Shower



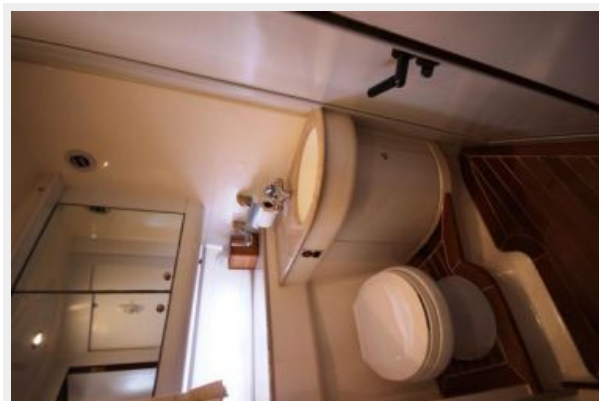
Master Head



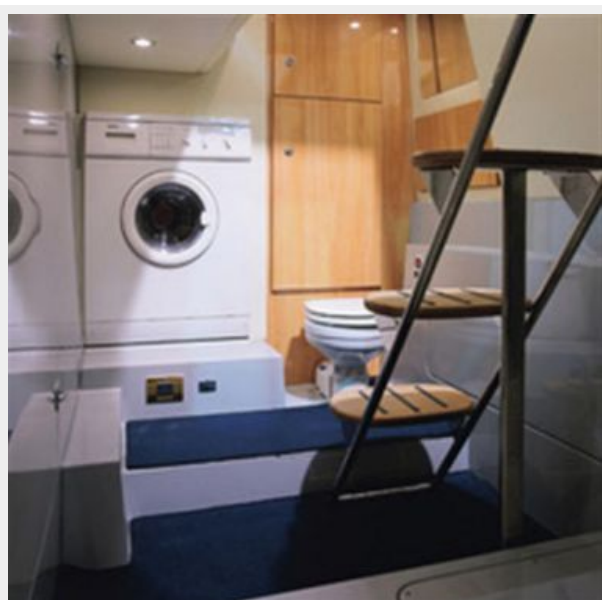
Forward VIP



Port Head



Factory Captains Quarters Photo



Lower Helm



Lower Helm



Lower Helm Seating



Upgraded Digital Controls



Forward Bidge



Aft Bridge



Upper Helm



Cockpit Grill



Upgraded Kahlenberg horns



Forward Deck



Passerelle 600lb



Factory Cockpit Photo



Cockpit



Clean Engine Room



Props, shafts struts and attachments for Sealift



Out of the Water



AB Rib



Sea Lift 800 lb



At Dock



Fast Idle



Port Profile



Port Aft Quarter



Starboard Profile



Starboard Profile with Aft Canvas



Appalachicola Bay at fast cruise (22 kts, 32 gals an hr)



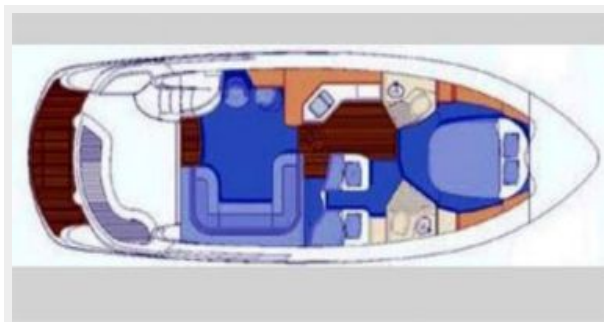
Running



Factory Running Shot



Cabin Layout



КОНТАКТЫ

Андрей Шестаков (Andrey Shestakov) – ведущий яхтенный брокер отдела продаж яхт и судов компании Shestakov Yacht Sales Inc. Официальный представитель Shestakov Yacht Sales Inc. для русскоговорящих клиентов в центральном офисе компании в Майами/Форт Лодердейл/Флорида/США.

Контактная информация

Email: andrey@shestakovyachtsales.com

Web: shestakovyachtsales.com

Телефоны

Краснодарский край: **+7(918)465-66-44**

США, Майами, Флорида: **+1(954)274-4435**

Время работы

Понедельник – Суббота: **9:00 - 21:00**
EDT

Воскресенье: **Закрито**

Адрес



Harbour Towne Marina, 850 NE 3rd St,
STE 213, Dania, FL 33004