

MOON DANCER — CUSTOM CAROLINA



Builder: CUSTOM CAROLINA

Year Built: 2002

Model: Sport Fisherman

Price: PRICE ON APPLICATION

Location: Costa Rica

LOA: 41' (12.5mm)

Beam: 13

Cruise Speed: 28 Knots Kts. (32 MPH)

Max Speed: 32 Knots Kts. (37 MPH)

Our experienced yacht broker, Andrey Shestakov, will help you choose and buy a yacht that best suits your needs **Moon Dancer — CUSTOM CAROLINA** from our catalogue. Presently, at Shestakov Yacht Sales Inc., we have a wide variety of yachts available on our sale's list. We also work in close contact with all the big yacht manufacturers from all over the world.

If you would like to buy a yacht **Moon Dancer — CUSTOM CAROLINA** or would like help answering any questions concerning purchasing, selling or chartering a yacht, please call **+1(954)274-4435**

TABLE OF CONTENTS

TABLE OF CONTENTS	2
SPECIFICATIONS	3
Overview	3
Basic Information	3
Dimensions	3
Speed, Capacities and Weight	3
Accommodations	4
Hull and Deck Information	4
Engine Information	4
PHOTOS	5
CONTACTS	8
Contact details	8
Telephones	8
Office hours	8
Address	8

SPECIFICATIONS

Overview

Major Price Reduction! \$50,000 Price Drop - Motivated Seller!

Fantastic buying opportunity! Uno Mas is a very high quality custom built cold molded express with a proven history. You will find this tournament rigged custom to be captain maintained, in excellent condition and ready to fish.

Location, is there a better big game spot in the world for a calm seas and variety of game fish? You won't find a better destination than the prestigious Los Suenos Resort. Uno Mas has it all: quality, condition, economy and a proven fish raiser. Considering the Pacific? Then this captain maintained express is the perfect day boat to fish, explore and win some tournaments.

Awesome custom mold Carolina express tournament fishing boat built by Rebel Marine. Full tower. Teak throughout, air conditioned helm. Rigger cameras, underwater lights. A great day boat with roomy cabin, full sized head with stand up shower. Teak and holly cabin sole. Center line berth. Powered with twin 740 HP Detroit MTU Series 60. New generator installed 2014. 28 Knot cruise at 1800 RPM's burning 42 GPH.

Basic Information

Category: Sport Fisherman

Model Year: 2002

Year Built: 2002

Country: Costa Rica

Dimensions

LOA: 41' (12.5mm)

Beam: 13

Speed, Capacities and Weight

Cruise Speed: 28 Knots Kts. (32 MPH)

Max Speed: 32 Knots Kts. (37 MPH)

Fuel Consumption: 42 Gal Gallons

Accommodations

Total Berths: 1

Sleeps: 2

Total Heads: 1

Hull and Deck Information

Hull Material: Fiberglass

Engine Information

Engines: 2

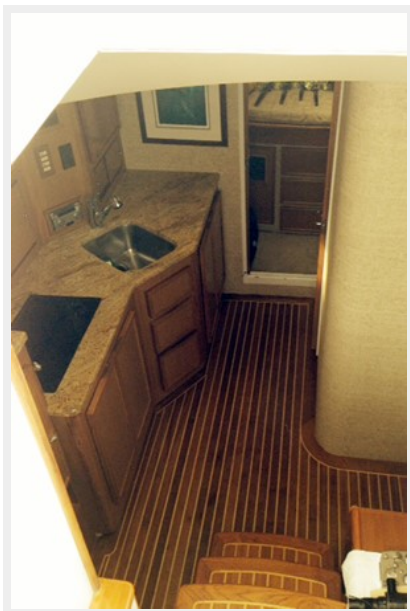
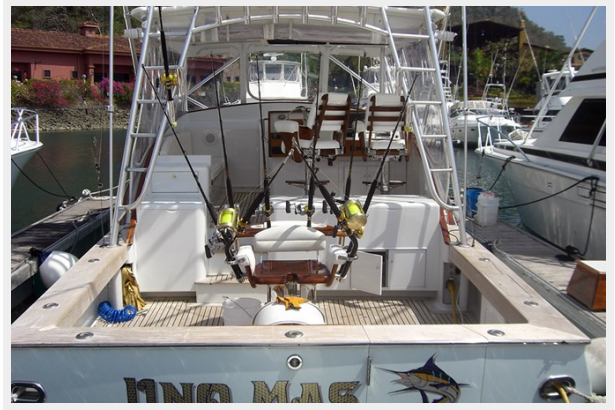
Manufacturer: Detroit Diesel

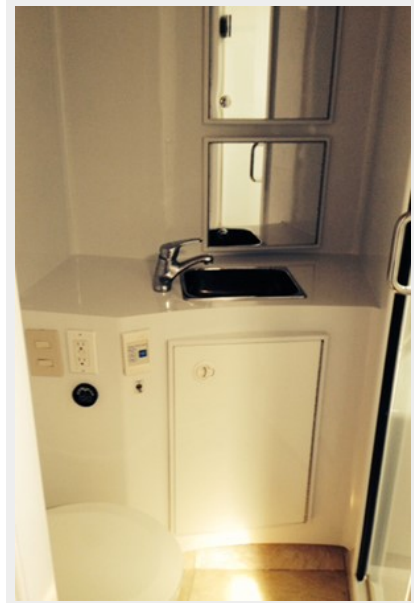
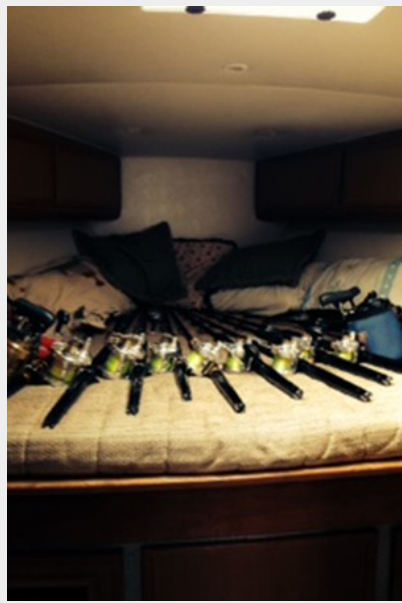
Engine Type: Inboard

Fuel Type: Diesel

PHOTOS







CONTACTS

Andrey Shestakov, leading yacht broker of the sales department of Shestakov Yacht Sales Inc. Shestakov Yacht Sales Inc., the official representative of the Miami/Fort Lauderdale FL headquarters.

Contact details

Email: andrey@shestakovyachtsales.com

Web: shestakovyachtsales.com/en/

Telephones

USA: +1(954)274-4435

Office hours

Monday – Saturday: **9:00 - 21:00** EDT

Sunday: **closed**

Address



Harbour Towne Marina, 850 NE 3rd St,
STE 213, Dania, FL 33004