

NECKER BELLE — CMN



Судостроитель: [CMN](#)

Год постройки: 2003

Модель: Катамаран

Цена: **ЦЕНА ЯХТЫ ПО ЗАПРОСУ**

Местонахождение: British Virgin Islands

Длина общая: 105' 0" (32.00m)

Ширина: 47' 5" (14.45m)

Мин. осадка: 7' 0" (2.13m)

Макс. осадка: 10' 5" (3.17m)

Крейс. скорость: 10 Kts. (12 MPH)

Макс. скорость: 16 Kts. (18 MPH)

Купить **NECKER BELLE — CMN** а также выбрать подходящую вам яхту из нашего каталога яхт вам поможет опытный яхтенный брокер Андрей Шестаков. На сегодняшний день компания **Shestakov Yacht Sales Inc.** имеет большое количество яхт в собственном списке продаж, а также тесно сотрудничает со всеми крупными яхтенными производителями по всему миру.

Для того чтобы купить яхту **NECKER BELLE — CMN** а также проконсультироваться по любому вопросу связанному с покупкой, продажей, чартером яхт позвоните по телефону **+7(918)465-66-44**.

ОГЛАВЛЕНИЕ

ОГЛАВЛЕНИЕ	2
ХАРАКТЕРИСТИКИ	4
Обзор	4
Основная информация	4
Размеры	4
Скорость, вместимость и масса	5
Размещение	5
Корпус и палуба	5
Информация о двигателе	5
ПОДРОБНОЕ ОПИСАНИЕ	6
Full Specifications	6
Basic Specifications	8
General	8
Main Salon	8
Accommodations	9
Master Stateroom	9
VIP Stateroom	9
Starboard Guest Stateroom	9
Salon Conversion	9
Flybridge	9
Galley	10
Crew Quarters	10
Storage	10
Aft Deck	10
Crow's Nest	10
Main Machinery and Equipment	11
Sails and Rigging	11
Galley and Laundry Equipment	11

Tender and Toys	11
Upgrades	11
Исключения	12
Отказ от ответственности	12
ФОТОГРАФИИ	13
КОНТАКТЫ	24
Контактная информация	24
Телефоны	24
Время работы	24
Адрес	24

ХАРАКТЕРИСТИКИ

Обзор

NECKER BELLE (Ex Lady Barbaretta) was built in 2003 at the CMN Shipyard in Cherbourg France. At the time of her launch she was the largest performance sailing Catamaran ever built. In 2009 NECKER BELLE completed a two-year major refit in Australia. The interior received a complete interior build-out with the addition of a fourth stateroom and the exterior upper deck was modified to achieve more deck space. Many other improvements have been made over the last few years including the installation of two brand new Caterpillar C7 main engines in 2014.

NECKER BELLE was designed to maximize fun, with a spacious trampoline, a diving board and a unique crow's nest that lifts guests to the top of the mast. Whether you're an adrenaline seeker into sailing, scuba diving, paddle boarding and game fishing or just into some serious sun tanning action then NECKER BELLE is the yacht for you!

Great sailing performance combined with beach club styling and a carefully conceived layout to create a versatile living space for up to 10 guests. NECKER BELLE's interior is spacious and contemporary with bamboo wood flooring and accent lighting in all the right places. Guests are accommodated in four cabins, with a master suite, a double cabin and two double/twin convertible cabins. A double sofa bed can be made up in the main saloon to provide a further two berths if required. No tender/RIB or Jetskis are included in the sale of the vessel.

DYSID:3098105

Основная информация

Тип судна: Катамаран

Модельный год: 2003

Год постройки: 2003

Страна: British Virgin Islands

Верх: Bimini Top

Открытая палуба мостика: Да

Кубрик: Да

Размеры

Длина общая: 105' 0" (32.00m)

Ширина: 47' 5" (14.45m)

Мин. осадка: 7' 0" (2.13m)

Макс. осадка: 10' 5" (3.17m)

Скорость, вместимость и масса

Крейс. скорость: 10 Kts. (12 MPH)

Дальность на крейсерской скорости:
1000

Макс. скорость: 16 Kts. (18 MPH)

Чистый вес: 171 Pounds

Вместимость воды: 250 Gallons

Вместимость сточного бака: 87 Gallons

Объем топливного бака: 250 Gallons

Размещение

Всего кают: 4

Всего коек: 5

Спальные места: 10

Всего ком. состава: 5

Каюты экипажа: 5

Койки экипажа: 7

Спальных мест экипажа: 8

Комм. состав экипажа: 3

Корпус и палуба

Материал корпуса: Composite

Комплектация корпуса: Катамаран

Дизайнер экстерьера: CMB

Дизайнер интерьера: Chenus Presles & Associates

Информация о двигателе

Двигатели: 2

Производитель: Caterpillar

Модель: C7

Тип двигателя: Inboard

Тип топлива: Diesel

ПОДРОБНОЕ ОПИСАНИЕ

Full Specifications

BASIC SPECIFICATIONS Name: NECKER BELLE Type: Catamaran Builder: CMN Year: 2003 LOA: 105.00' / 32.00m Beam: 47.50' / 14.45m Min. Draft: 7.00' / 2.13m Max Draft: 10.50' / 3.17m Hull Material: Composite Flag: Isle of Man Main Engines: Caterpillar C7 454hp, 2014 Max Speed: 16 Knots Cruising Speed: 10 Knots Range: 1,000 nm Electrical: 240 volts Gross Tonnage: 171 tons Guest Accommodations: Sleeps 10 in 4 staterooms Crew Accommodations: Sleeps 7 in 5 cabins, Captain's cabin **GENERAL NECKER BELLE** (ex Lady Barbaretta) was built in 2003 at the CMB Shipyard in Cherbourg France. At the time of her launch, she was the largest performance sailing Catamaran ever built. In 2009 NECKER BELLE completed a two-year major refit in Australia that was managed by Azzure Marine. The interior received a complete interior build-out and the exterior upper deck was modified to achieve more deck space. Many other improvements have been made over the last few years including the installation of two brand new Caterpillar C7 main engines in 2014. NECKER BELLE was designed to maximize fun, with a spacious trampoline, a diving board and a unique crow's nest that lifts guests to the top of the mast. NECKER BELLE can accommodate various guest's interests whether you're into sailing, scuba diving, paddle boarding or game fishing. The sailing performance combined with beach club styling and a carefully conceived layout to creates a versatile living space for up to 10 guests. The yacht's interior is spacious and contemporary with bamboo wood flooring and accent lighting in all the right places. Guests are accommodated in four cabins, with a master suite, a double cabin, and two double/twin convertible cabins. A double sofa bed can be converted in the main saloon to provide a further two berths if required. **MAIN SALON** As you enter the salon from the aft deck you'll find the bar to your left and the main salon seating area to your right. Featuring a large L-shaped sofa and additional seating this is a comfortable area to sit and relax before adjourning to your cabin (which are all on the main deck). **ACCOMMODATIONS** All accommodations are directly off the main salon on the bridge deck. A unique feature which allows for ocean views from the cabins, all of which feature en-suite heads. Separated into port and starboard cabins, a center hallway separates the port side VIP cabins and on the starboard side Master and guest cabins for a total of four cabins accommodating 8 guests. **MASTER STATEROOM** The Master suite offers stunning views of the ocean through large windows along the starboard side. There is ample storage space along with a queen size bed, en-suite head with double basin and shower. A 52-inch TV, DVD player, and sound system provide entertainment. You can also connect your smartphone or tablet to include your personal music choices. **VIP STATEROOM** The two portside VIP cabins feature beds that can be arranged as twin or easily made into a queen. Both VIPs feature 26-inch TVs with DVD and personal sound systems. They also have en-suite heads and showers. **STARBOARD GUEST STATEROOM** The starboard side forward cabin is a double cabin with double berth. This cabin also offers its own 26-inch TV, DVD and sound system. All guest accommodations feature individual air conditioning units added comfort. **SALON CONVERSION** The salon area can also be converted to accommodate an additional two people by converting the couch to a queen bed. This area features a privacy screen and separate head and shower. **FLYBRIDGE** The flybridge

can be entered up integrated ladders but is typically accessed via the stairs at the forward end of the main salon. The stairway leads right into the main sitting area which easily accommodates 20 or more people. This area can be set up for alfresco dining or can be enjoyed as a large outdoor lounge by lowering the center table and using the cushions to fill the entire area. This is an entertainment area that features custom awnings to keep you protected from the sun during the day and allows for stargazing at night. Just aft of the sitting area are the two main helm stations and sail control centers where the captain can use the hydraulic sail management systems. For the adventurous type, there is a diving board on the aft end. **GALLEY** You enter the port hull through the aft service entrance from the bar/service area and immediately enter the efficient stainless-steel gourmet galley. Appliances for the chef include a Miele ceramic induction cooktop, (2) Miele wall ovens, (3) custom made Utec refrigerators and freezers with plenty of storage, a double stainless-steel sink as well as a commercial dishwasher. **CREW QUARTERS** As you move forward through the port hull you enter the crew mess and then the chef's cabin. Moving forward is the shared head and shower space which also separates the chef's and steward's cabin which has accommodations for two additional crew members. **STORAGE** Moving forward you will enter the storage areas and workshop with an impressive inventory of spares and tools. All dive gear and equipment is stored in this area. **AFT DECK** As you enter the yacht from the passerelle, day beds to the outboard of two large dining tables allow guests to comfortably rest outdoors under the shade of the aft deck during the day or sleep under the stars at night. The main entertaining area includes two large tables with seating for 16 people make for comfortable outdoor dining accommodations. Also included are the wine cooler refrigerators and concealed swim platforms. If you're returning aboard from the water you'll have an easy entry from either hull and freshwater showers built into the overhead. There is also a projection screen for viewing movies on the aft deck. **CROW'S NEST** No adventure aboard "Necker Belle" would be complete without a ride up in the crow's nest. Built for two people to ride-up and enjoy breathtaking views from over 100 feet above the ocean. Controlled via wireless remote, ride past the second set of spreaders and take in the surroundings. **MAIN MACHINERY AND EQUIPMENT** Main Engines: (2) Caterpillar C7 454hp Port Hours: 2,800 (June 2017) Starboard Hours: 2,800 (June 2017) Propellers: 4-blade Drive: Sail drive Generators: (2) Cummins MDDCG (spec A-C) 62.5kW Port Hours: 6,800 (June 2017) Starboard Hours: 6,800 (June 2017) Fuel Capacity: 2,000 Gallons Water Capacity: 900 Gallons Air Conditioning: Webasto Sea Water Pump: PME1000X 240V Sea water pump and relay box with 3 triggers Toilet System: Headhunter Royal Flush, espresso model (installed 2016) Navigation and Communication Systems Navigation Systems Radar: Furuno 100 mile Magnetic Compass: Cassens & Plath Auto Pilot: Simrad AP70 Wind Indicator Station: B&G Hercules 2000 Navigation Center: Samsung SyncMaster 943BW **SAILS AND RIGGING** Rig: Sloop Main Sail: Quantum 295 square meters Genoa: Quantum 197 square meters Fully battened mainsail Gennaker/Cruising spinnaker Furling genoa Storm jib Asymmetric spinnaker **GALLEY AND LAUNDRY EQUIPMENT** Main Galley Equipment Cooking Equipment: Miele DA 2270 cooker hood Miele 5735/5738 ceramic induction cooktop (2) Miele convection wall ovens Microwave: Multistar microwave oven MW3051000GSH Ice-maker: Scottsman ACM 56-AC Wine cooler: Isotherm wine fridge MOD Divino35 (Aft Deck), Fisher & Paykel model F120 (Bar & Galley) Additional Items: Robot Coupe Musso Ice-cream machine Laundry Equipment Washer: (2) Miele Professional PW6065 washers Dryer: (2) Miele Professional PT7135C dryers (Feb 2017) **TENDERS AND TOYS** Jet Skis: (2) Sea Doos Dive

Compressor: Bauer PE 200-TE-F01 dive compressor (full-service June 2017) Additional Items: (5) Steel tanks (6) Regulators (2-standard hose, 4-Air2 hose) (7) BCDs Weights (2lbs, 3lbs, 4lbs) Impact jackets Noodles Wake boards Skis Inflatable island raft Inflatable towable rings Inflatable 4-seater Inflatable drinks cooler **UPGRADES 2017** Replacement of all engine mounts Replaced thrust bearings on port side New mounting hardware and bushings for thrust bearing on starboard side New cutlass bearings for both port and starboard side 2,000 Hour service on main engines done by Rimco Service and replacement as required of Driveline bearings, seals, and alignment New injectors and major service for generators New bottom paint **UPGRADES 2016** Replacement of entire toilet system Replacement of salon flooring Service/overhaul all sea water pumps and fittings Mold remediation of all AC system Service of entire AC system including replacement of fans and insulation as required Replacement of galley flooring Replacement of swim platform hydraulic cylinders **UPGRADES 2013** Replacement of main engines and gearboxes Replacement of generators

Basic Specifications

Type: Catamaran Builder: CMN Year: 2003 LOA: 105.00' / 32.00m Beam: 47.50' / 14.45m Min. Draft: 7.00' / 2.13m Max Draft: 10.50' / 3.17m Hull Material: Composite Flag: Isle of Man Main Engines: Caterpillar C7 454hp, 2014 Max Speed: 16 Knots Cruising Speed: 10 Knots Range: 1,000 nm Electrical: 240 volts Gross Tonnage: 171 tons Guest Accommodations: Sleeps 10 in 4 staterooms Crew Accommodations: Sleeps 7 in 5 cabins, Captain's cabin

General

NECKER BELLE (ex Lady Barbaretta) was built in 2003 at the CMB Shipyard in Cherbourg France. At the time of her launch, she was the largest performance sailing Catamaran ever built. In 2009 NECKER BELLE completed a two-year major refit in Australia that was managed by Azzure Marine. The interior received a complete interior build-out and the exterior upper deck was modified to achieve more deck space. Many other improvements have been made over the last few years including the installation of two brand new Caterpillar C7 main engines in 2014. NECKER BELLE was designed to maximize fun, with a spacious trampoline, a diving board and a unique crow's nest that lifts guests to the top of the mast. NECKER BELLE can accommodate various guest's interests whether you're into sailing, scuba diving, paddle boarding or game fishing. The sailing performance combined with beach club styling and a carefully conceived layout to creates a versatile living space for up to 10 guests. The yacht's interior is spacious and contemporary with bamboo wood flooring and accent lighting in all the right places. Guests are accommodated in four cabins, with a master suite, a double cabin, and two double/twin convertible cabins. A double sofa bed can be converted in the main saloon to provide a further two berths if required.

Main Salon

As you enter the salon from the aft deck you'll find the bar to your left and the main salon seating area to your right. Featuring a large L-shaped sofa and additional seating this is a comfortable area to sit and relax before adjourning to your cabin (which are all on the main deck).

Accommodations

All accommodations are directly off the main salon on the bridge deck. A unique feature which allows for ocean views from the cabins, all of which feature en-suite heads. Separated into port and starboard cabins, a center hallway separates the port side VIP cabins and on the starboard side Master and guest cabins for a total of four cabins accommodating 8 guests.

Master Stateroom

The Master suite offers stunning views of the ocean through large windows along the starboard side. There is ample storage space along with a queen size bed, en-suite head with double basin and shower. A 52-inch TV, DVD player, and sound system provide entertainment. You can also connect your smartphone or tablet to include your personal music choices.

VIP Stateroom

The two portside VIP cabins feature beds that can be arranged as twin or easily made into a queen. Both VIPs feature 26-inch TVs with DVD and personal sound systems. They also have en-suite heads and showers.

Starboard Guest Stateroom

The starboard side forward cabin is a double cabin with double berth. This cabin also offers its own 26-inch TV, DVD and sound system.

Salon Conversion

The salon area can also be converted to accommodate an additional two people by converting the couch to a queen bed. This area features a privacy screen and separate head and shower.

Flybridge

The flybridge can be entered up integrated ladders but is typically accessed via the stairs at the forward end of the main salon. The stairway leads right into the main sitting area which easily accommodates 20 or more people. This area can be set up for alfresco dining or can be enjoyed as a large outdoor lounge by lowering the center table and using the cushions to fill the entire

area. This is an entertainment area that features custom awnings to keep you protected from the sun during the day and allows for stargazing at night. Just aft of the sitting area are the two main helm stations and sail control centers where the captain can use the hydraulic sail management systems. For the adventurous type, there is a diving board on the aft end.

Galley

You enter the port hull through the aft service entrance from the bar/service area and immediately enter the efficient stainless-steel gourmet galley. Appliances for the chef include a Miele ceramic induction cooktop, (2) Miele wall ovens, (3) custom made Utec refrigerators and freezers with plenty of storage, a double stainless-steel sink as well as a commercial dishwasher.

Crew Quarters

As you move forward through the port hull you enter the crew mess and then the chef's cabin. Moving forward is the shared head and shower space which also separates the chef's and stew's cabin which has accommodations for two additional crew members.

Storage

Moving forward you will enter the storage areas and workshop with an impressive inventory of spares and tools. All dive gear and equipment is stored in this area.

Aft Deck

As you enter the yacht from the passerelle, day beds to the outboard of two large dining tables allow guests to comfortably rest outdoors under the shade of the aft deck during the day or sleep under the stars at night. The main entertaining area includes two large tables with seating for 16 people make for comfortable outdoor dining accommodations. Also included are the wine cooler refrigerators and concealed swim platforms. If you're returning aboard from the water you'll have an easy entry from either hull and freshwater showers built into the overhead. There is also a projection screen for viewing movies on the aft deck.

Crow's Nest

No adventure aboard "Necker Belle" would be complete without a ride up in the crow's nest. Built for two people to ride-up and enjoy breathtaking views from over 100 feet above the ocean. Controlled via wireless remote, ride past the second set of spreaders and take in the surroundings.

Main Machinery and Equipment

Main Engines: (2) Caterpillar C7 454hp Port Hours: 2,800 (June 2017) Starboard Hours: 2,800 (June 2017) Propellers: 4-blade Drive: Sail drive Generators: (2) Cummins MDDCG (spec A-C) 62.5kW Port Hours: 6,800 (June 2017) Starboard Hours: 6,800 (June 2017) Fuel Capacity: 2,000 Gallons Water Capacity: 900 Gallons Air Conditioning: Webasto Sea Water Pump: PME1000X 240V Sea water pump and relay box with 3 triggers Toilet System: Headhunter Royal Flush, espresso model (installed 2016) Navigation and Communication Systems Navigation Systems Radar: Furuno 100 mile Magnetic Compass: Cassens & Plath Auto Pilot: Simrad AP70 Wind Indicator Station: B&G Hercules 2000 Navigation Center: Samsung SyncMaster 943BW

Sails and Rigging

Rig: Sloop Main Sail: Quantum 295 square meters Genoa: Quantum 197 square meters Fully battened mainsail Gennaker/Cruising spinnaker Furling genoa Storm jib Asymmetric spinnaker

Galley and Laundry Equipment

Main Galley Equipment Cooking Equipment: Miele DA 2270 cooker hood Miele 5735/5738 ceramic induction cooktop (2) Miele convection wall ovens Microwave: Multistar microwave oven MW3051000GSH Ice-maker: Scottsman ACM 56-AC Wine cooler: Isotherm wine fridge MOD Divino35 (Aft Deck), Fisher & Paykel model F120 (Bar & Galley) Additional Items: Robot Coupe Musso Ice-cream machine

Tender and Toys

TENDERS AND TOYS Jet Skis: (2) Sea Doos Dive Compressor: Bauer PE 200-TE-F01 dive compressor (full-service June 2017) Additional Items: (5) Steel tanks (6) Regulators (2-standard hose, 4-Air2 hose) (7) BCDs Weights (2lbs, 3lbs, 4lbs) Impact jackets Noodles Wake boards Skis Inflatable island raft Inflatable towable rings Inflatable 4-seater Inflatable drinks cooler

Upgrades

2017 Replacement of all engine mounts Replaced thrust bearings on port side New mounting hardware and bushings for thrust bearing on starboard side New cutlass bearings for both port and starboard side 2,000 Hour service on main engines done by Rimco Service and replacement as required of Driveline bearings, seals, and alignment New injectors and major service for generators New bottom paint **2016** Replacement of entire toilet system Replacement of salon flooring Service/overhaul all sea water pumps and fittings Mold remediation of all AC system Service of entire AC system including replacement of fans and insulation as required

Replacement of galley flooring Replacement of swim platform hydraulic cylinders **2013**
Replacement of main engines and gearboxes Replacement of generators

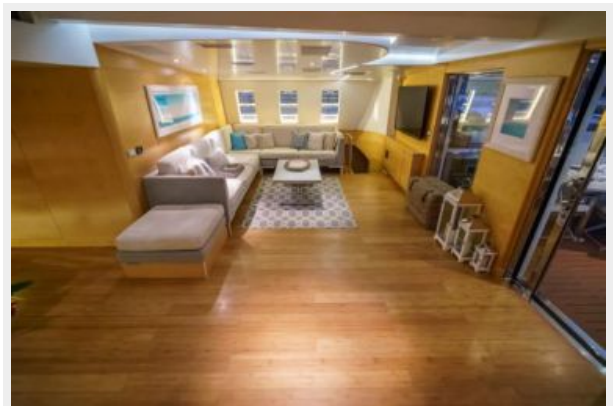
Исключения

При продаже яхты исключаются личные вещи владельца.

Отказ от ответственности

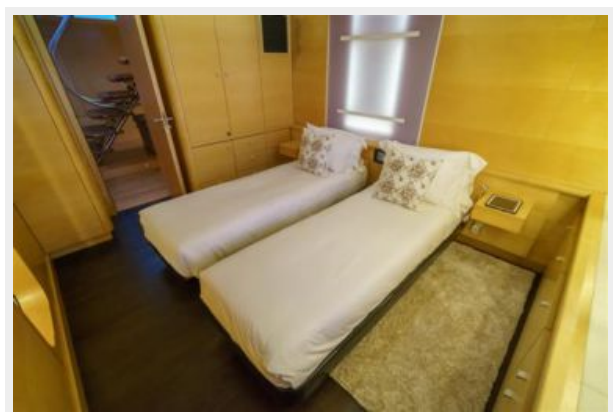
Компания предоставляет описание судна или яхты добросовестно, но не может гарантировать точность этой информации, а также не ручается за техническое состояние. Покупатель должен проинструктировать своих агентов или оценщиков исследовать представленную информацию более подробно, по собственному желанию. Продажа судна или яхты, изменение цены или снятие с продажи будет происходить без предварительного уведомления.

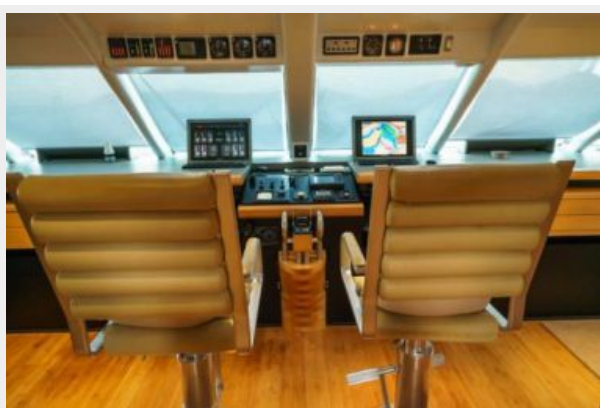
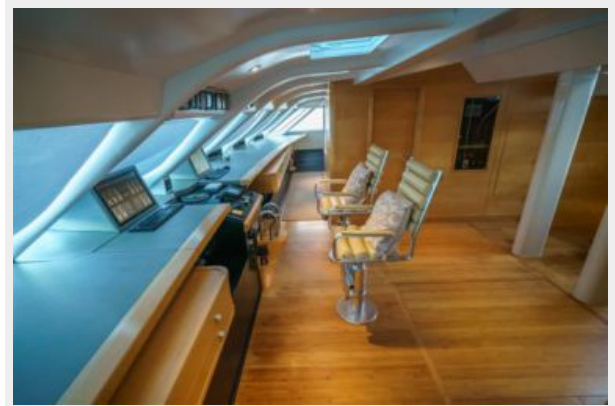
ФОТОГРАФИИ



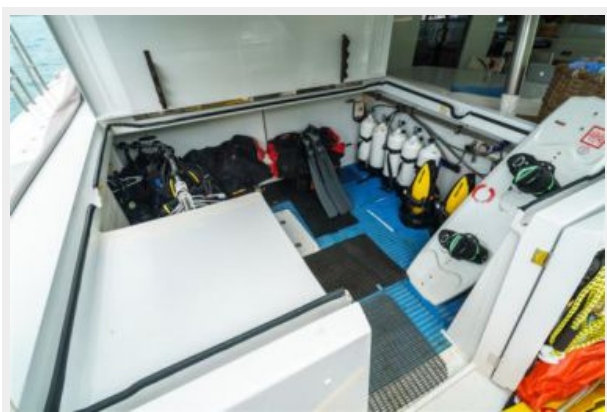


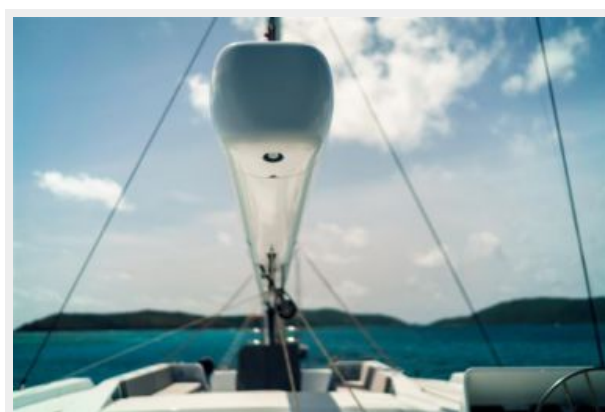
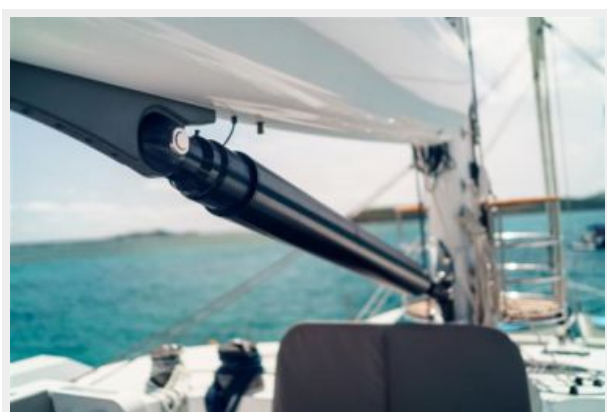






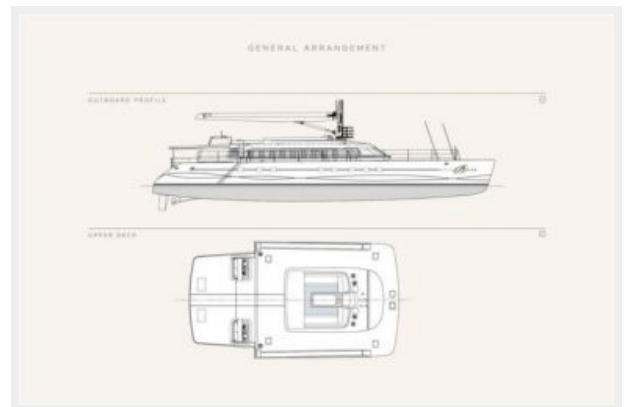
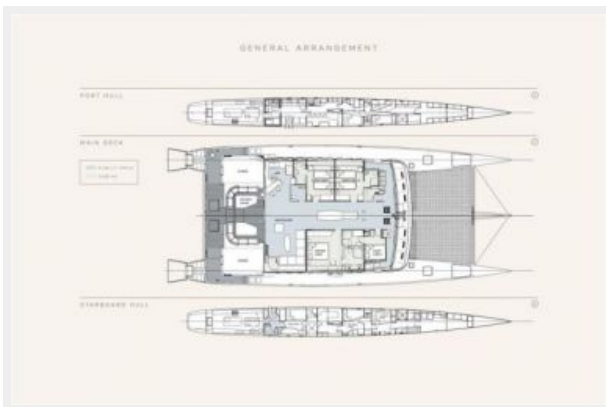












КОНТАКТЫ

Андрей Шестаков (Andrey Shestakov) – ведущий яхтенный брокер отдела продаж яхт и судов компании Shestakov Yacht Sales Inc. Официальный представитель Shestakov Yacht Sales Inc. для русскоговорящих клиентов в центральном офисе компании в Майами/Форт Лодердейл/Флорида/США.

Контактная информация

Email: andrey@shestakovyachtsales.com

Web: shestakovyachtsales.com

Телефоны

Краснодарский край: **+7(918)465-66-44**

США, Майами, Флорида: **+1(954)274-4435**

Время работы

Понедельник – Суббота: **9:00 - 21:00**
EDT

Воскресенье: **Закрито**

Адрес



Harbour Towne Marina, 850 NE 3rd St,
STE 213, Dania, FL 33004