

## RAISING DOUGH — LAZZARA



**Судостроитель:** LAZZARA

**Год постройки:** 2003

**Модель:** Мега-яхта

**Цена:** ЦЕНА ЯХТЫ ПО ЗАПРОСУ

**Местонахождение:** United States

**Длина общая:** 80' 0" (24.38m)

**Макс. осадка:** 4' 6" (1.37m)

**Крейс. скорость:** 20 Kts. (23 MPH)

**Макс. скорость:** 27 Kts. (31 MPH)

Купить **Raising Dough — LAZZARA** а также выбрать подходящую вам яхту из нашего **каталога яхт** вам поможет опытный яхтенный брокер Андрей Шестаков. На сегодняшний день компания **Shestakov Yacht Sales Inc.** имеет большое количество яхт в **собственном списке продаж**, а также тесно сотрудничает со всеми крупными **яхтенными производителями** по всему миру.

Для того чтобы купить яхту **Raising Dough — LAZZARA** а также проконсультироваться по любому вопросу связанному с покупкой, продажей, чартером яхт позвоните по телефону **+7(918)465-66-44**.

# ОГЛАВЛЕНИЕ

---

ОГЛАВЛЕНИЕ	2
ХАРАКТЕРИСТИКИ	4
Обзор	4
Основная информация	4
Размеры	4
Скорость, вместимость и масса	4
Размещение	4
Корпус и палуба	5
Информация о двигателе	5
ПОДРОБНОЕ ОПИСАНИЕ	6
Foredeck	6
Aft Deck	6
Cockpit	6
Salon	7
Galley	7
Skylounge	8
Master Staterooms & Master Head	8
VIP Staterooms	8
Forward Staterooms/ Crew Quarters	8
Office Area	8
Mechanical & Engine	9
Electronics & Navigation	9
Recent Updates	10
Disclaimer	10
Исключения	10
Отказ от ответственности	10
ФОТОГРАФИИ	11
КОНТАКТЫ	29

---

Контактная информация	29
Телефоны	29
Время работы	29
Адрес	29

---

# ХАРАКТЕРИСТИКИ

## Обзор

This popular model is a one of a kind! The Raising Dough has been maintained with no expenses spared. Not only does she have style and elegance, but with many custom features she is a very versatile and large 80' yacht. Whether it's a trip to the Islands, a weekend getaway or just a sunset cruise you won't be disappointed.

## Основная информация

Тип судна: Мега-яхта

Модельный год: 2003

Год постройки: 2003

Страна: United States

## Размеры

Длина общая: 80' 0" (24.38m)

Макс. осадка: 4' 6" (1.37m)

Трапы: 27' 0" (8.23m)

## Скорость, вместимость и масса

Крейс. скорость: 20 Kts. (23 MPH)

Крейсерская скорость поворота: 1900 Kts.

Макс. скорость: 27 Kts. (31 MPH)

Макс. скорость поворота: 2350 Kts.

Вместимость воды: 400 Gallons

Вместимость сточного бака: 200 Gallons

Объем топливного бака: 2000 Gallons

## Размещение

Всего кают: 5

Всего ком. состава: 6

---

## Корпус и палуба

---

**Материал корпуса:** Fiberglass

---

## Информация о двигателе

---

**Производитель:** MTU

**Модель:** 12V183 TE94

**Тип топлива:** Diesel

---

## ПОДРОБНОЕ ОПИСАНИЕ

---

### Foredeck

---

If you want the wind in your hair and breathtaking views than head to the foredeck and take a seat on the Sunpad!

- Anchor windlass, electric
- Foredeck wash downs
- Foredeck sunpad, pneumatic assisted
- Vinyl upholstered foredeck sunpad cushion
- Deck fills:water waste removal
- Forward hatch to bow cabin opening
- Denon Tuner
- 2 JL audio 7.5
- iPod compatibility

### Aft Deck

---

Wow guests as they step on the boat. Group seating around the teak table along with full surround sound and lighting allows for a casual yet sophisticated yachting experience.

- Table with teak top and built in group seating
- Access to cockpit
- Access to fly bridge with S.S. ladder
- Boarding doors, port and starboard
- Teak deck
- Access to side decks
- Lighting and speakers under hardtop
- Delta T intake vents
- Fuel fill
- Capstan wenches port and starboard
- Dockside water connection
- Freshwater wash down

### Cockpit

---

Enjoy swimming off the custom swim platform or taking a jet ski for a ride!

- Water tight engine room access
- Jet Ski storage garage, starboard
- Pasarelle, port

- Shore power outlet w/cable master
- T & T hydraulic lift swim platform
- Hot/Cold handheld shower

## Salon

---

Enter the beautifully updated salon through double glass sliding doors. The salon is elegant yet functional with sectional seating, 2 accent chairs, coffee table and a bar with additional seating. It is designed truly for entertaining. The 42" Sony Bravia flat panel TV is enclosed in a "high-low" cabinet. Now you see it, now you don't! Forward the salon is the dining area with room for 6 plus a separate buffet counter for the casual days as well as dual china cabinets to showcase fine dining at it's best.

- Bar w/seating
- Sectional sofa
- Surround sound
- SONY Blu-ray /DVD player
- DENON receiver
- Sunfire Subwoofer
- APC battery backup
- 42" Sony Bravia flat panel TV
- Bluetooth compatible iPod station

## Galley

---

The very popular Country Kitchen allows for a separate gathering place for guests and ample counter space for the food preparation. The dinette allows those who enjoy congregating in the "kitchen" a spacious seating area with bench seating and stools all around a granite countertop table.

- Country Kitchen style
- Granite countertops
- Island w/sink
- Bamboo plank flooring
- Dinette with bench seating
- 13' Samsung TV
- Insta-hot water dispenser
- Bosch SS dishwasher
- GE Spacemaker microwave/convection
- U-LINE wine cooler
- Sub Zero freezer drawers
- KitchenAide refrigerator

---

## Skylounge

---

Enjoy more breathtaking views from the Skylounge whether it be inside or out. Equipped with both indoor and outdoor TV's, surround sound and seating for large parties.

- JVC TH-A10 DVD theater system
- Inside SAMSUNG LCD 43 Flat panel TV
- Outside SAMSUNG LCD 43 Flat panel TV w/cover
- Sofa converts to double bed

---

## Master Staterooms & Master Head

---

Feel at home in the gorgeous over sized Master Stateroom. With a king bed, custom bedding, separate sitting and desk area on either side you will have all the luxuries of a 5 Star hotel. Not to mention the large walk-in closet and of course the independent Audio/Visual system.

In the Master head you will find dual marble "his & her" vanities and a Jacuzzi tub with a large shower. The gold fixtures throughout make this Master head a perfect addition to the 1st class Master Stateroom!

---

## VIP Staterooms

---

The VIP Staterooms are just that. VIP! They have ample room with walk around queen beds, custom bedding, and cedar-lined closets. A full state of the art independent Audio/Visual system in each stateroom allows guests to watch what they want when relaxing. The VIP Stateroom heads are just as elegant as the Master head, each with their own private access.

---

## Forward Staterooms/ Crew Quarters

---

Enter through the forward foyer that is equipped with the office area & washer/dryer to find additional Staterooms. Whether for guests or your Captain and Crew, these rooms are as equally as impressive as the Master and VIP's. On the bow Port is a Stateroom with a full bed, storage cabinets, cedar-lined closet and private head. At the bow is another Stateroom with 2 bunk beds on the Port side and a cedar-lined closet, storage cabinets and private head on the Starboard. Both Staterooms include independent Audio/Visual systems.

---

## Office Area

---

Fully equipped office station!

- Desk with drawers



- Telephone/Computer outlet
- Book Shelves
- Access to F77 SAT
- (2) 120V
- Washer/Dryer
- Panasonic phone system throughout boat

---

## Mechanical & Engine

---

- Twin MTU's- 12V183 TE94 HP1320
- ZF marine reduction gear model 2000 A
- 2 Onan 21.5 kW 110/220 generators
- SIDE-POWER Thruster SP 285 TC 48V
- Besenzoni passerelle
- Sea Recovery Aqua Whisper water maker 600 gpd
- ALGAE-X MTC-1000 fuel polishing system
- ALGAE-X fuel treatment units, plumbed Port and Starboard engine
- 8 UNDERWATER LIGHTS LIMITED
- 2 JUN-AIR compressors
- TRAC Hydraulic stabilizers
- FlowScan fuel flow meters
- Oil change system w/used oil and clean oil storage
- T & T hydraulic lift swim platform

---

## Electronics & Navigation

---

- Robertson AP20, Auto Pilot
- Garmin GPS MAP 6208 8", Color GPS
- Command Mic3
- Garmin 406 XHD Radar (3/15)
- Garmin 8215 Display (3/15)
- ICom M504 VHF
- Side Power bow thruster control
- Delta T fan control, Helm
- ISIS ship board monitoring system
- 15" VEI daylight display
- ITT Jabasco search light and control
- Pentium 4 navigation computer
- B&G HS2000
- Garmin GPSmap 6280
- Garmin GPSmap 7215
- Furuno FCV-582L

- Raymarine Loudhailer Ray430
- KVH sat dish

## Recent Updates

---

- New certificate for life raft (8 person SOLAS A) (6/17)
- New bottom paint - Micron CSC (4/16)
- Bow thruster service- new prop and seals (4/16)
- New window caulk (4/16)
- New SS emergency bilge manifold (4/16)
- New Headhunter freshwater expansion tank (10/16)
- Generator heat exchanger service (6/16)
- New generator belts (6/16)
- New ISO boost 100 Amp, Charles Industries (8/15)

## Disclaimer

---

The Company offers the details of this vessel in good faith but cannot guarantee or warrant the accuracy of this information nor warrant the condition of the vessel. A buyer should instruct his agents, or his surveyors, to investigate such details as the buyer desires validated. This vessel is offered subject to prior sale, price change, or withdrawal without notice.

## Исключения

---

При продаже яхты исключаются личные вещи владельца.

## Отказ от ответственности

---

Компания предоставляет описание судна или яхты добросовестно, но не может гарантировать точность этой информации, а также не ручается за техническое состояние. Покупатель должен проинструктировать своих агентов или оценщиков исследовать представленную информацию более подробно, по собственному желанию. Продажа судна или яхты, изменение цены или снятие с продажи будет происходить без предварительного уведомления.

# ФОТОГРАФИИ

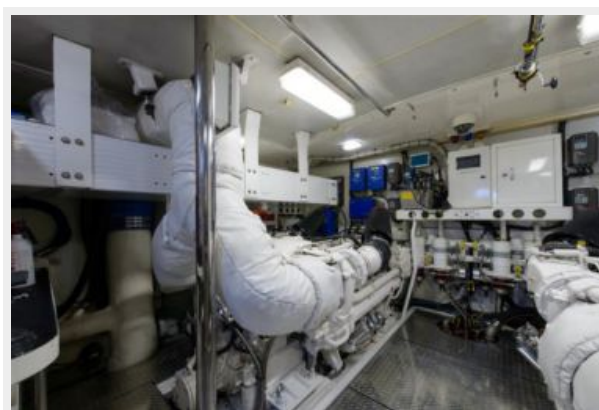
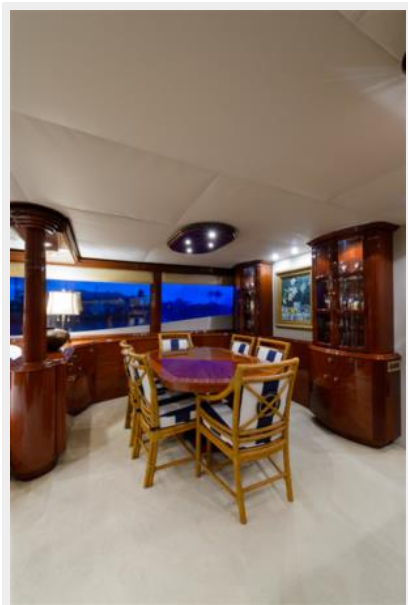








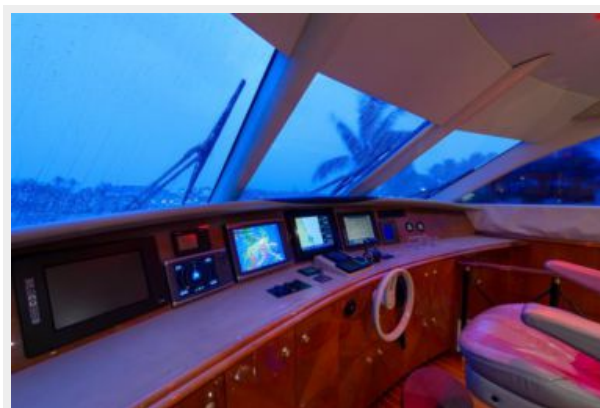
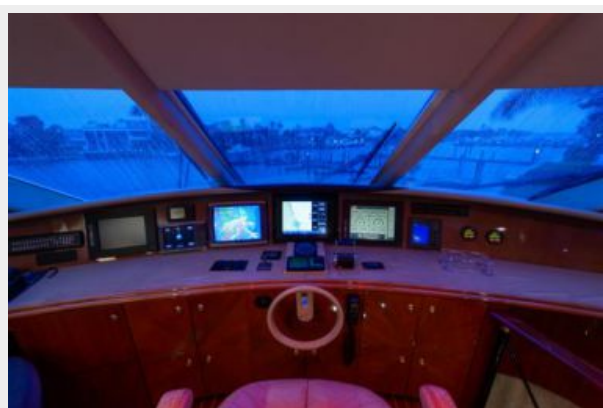
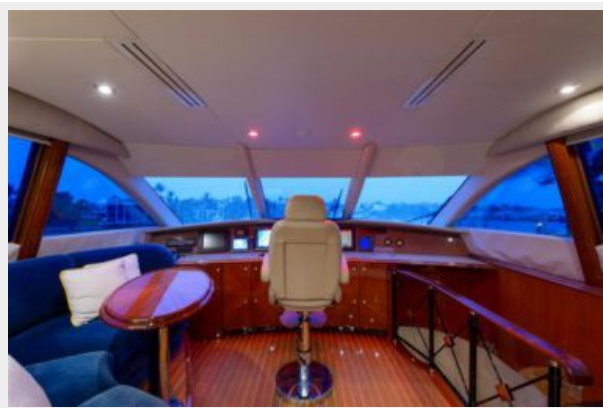




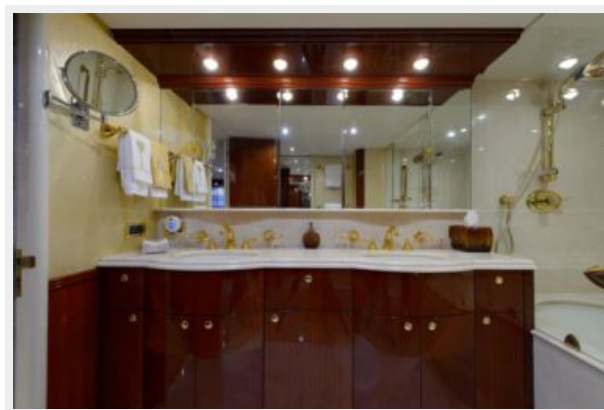
















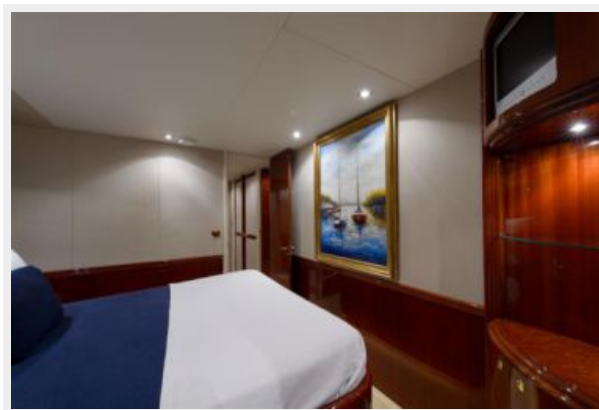
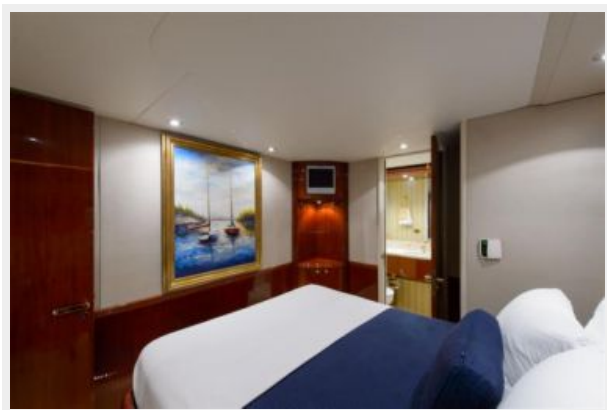












# КОНТАКТЫ

---

Андрей Шестаков (Andrey Shestakov) – ведущий яхтенный брокер отдела продаж яхт и судов компании Shestakov Yacht Sales Inc. Официальный представитель Shestakov Yacht Sales Inc. для русскоговорящих клиентов в центральном офисе компании в Майами/Форт Лодердейл/Флорида/США.

## Контактная информация

---

Email: [andrey@shestakovyachtsales.com](mailto:andrey@shestakovyachtsales.com)

Web: [shestakovyachtsales.com](http://shestakovyachtsales.com)

## Телефоны

---

Краснодарский край: **+7(918)465-66-44**

США, Майами, Флорида: **+1(954)274-4435**

## Время работы

---

Понедельник – Суббота: **9:00 - 21:00**  
EDT

Воскресенье: **Закрето**

## Адрес

---



Harbour Towne Marina, 850 NE 3rd St,  
STE 213, Dania, FL 33004