

HAVBRIS BLUE — TAYANA



Builder: TAYANA

Year Built: 2009

Model: Cruising Sailboat

Price: PRICE ON APPLICATION

Location: Greece

LOA: 48' 0" (14.63m)

Beam: 14' 6" (4.42m)

Min Draft: 6' 0" (1.83m)

Max Draft: 6' 0" (1.83m)

Our experienced yacht broker, Andrey Shestakov, will help you choose and buy a yacht that best suits your needs **Havbris Blue — TAYANA** from our catalogue. Presently, at Shestakov Yacht Sales Inc., we have a wide variety of yachts available on our sale's list. We also work in close contact with all the big yacht manufacturers from all over the world.

If you would like to buy a yacht **Havbris Blue — TAYANA** or would like help answering any questions concerning purchasing, selling or chartering a yacht, please call **+1(954)274-4435**

TABLE OF CONTENTS

TABLE OF CONTENTS	2
SPECIFICATIONS	5
Overview	5
Basic Information	5
Dimensions	5
Speed, Capacities and Weight	5
Accommodations	6
Hull and Deck Information	6
Engine Information	6
DETAILED INFORMATION	7
General	7
Accommodations	7
Galley	7
Hull & Deck Construction	7
Engines & Mechanical Equipment	7
Electrical System	7
Plumbing & Ventilation	8
Electronics & Navigation	8
Sailing Instrumentation	8
Entertainment Equipment	8
Deck Equipment	8
Spars, Sails & Rigging	8
Tenders	9
Exclusions	9
Disclaimer	9
PHOTOS	10
Exterior	10
Exterior	10

Helm & Cockpit	10
Deck Hardware By Lewmar	10
On Deck Storage	11
Salon	11
Salon	11
Salon	11
Salon	11
Salon	11
Salon & Nav Desk	12
Navigation Station Desk	12
VHF Radios	12
Galley	12
Galley	12
Galley	12
Galley	13
Galley	13
Galley	13
Aft Double Stateroom	13
Forward Double Stateroom	13
2 Berth Stateroom	13
Aft Head & Shower	14
Aft Head & Shower	14
Aft Head & Shower	14
Forward Head & Shower	14
Forward Head & Shower	15
Engine Compartment	15
Generator	15
Engine Compartment Raw Water Manifold	15
Engine Compartment	16

Generator Compartment Access	16
Tayana 48DS Deck Layout Drawing	16
Tayana 48DS Cabin Layout Drawing	16
CONTACTS	17
Contact details	17
Telephones	17
Office hours	17
Address	17

SPECIFICATIONS

Overview

The owners are very experienced ocean sailors having sailed their previous sailboat, with their three small children, from the northern US south in the Atlantic and across the Pacific ending their cruise in New Zealand. They ordered this Tayana 48DS and specified all the equipment based on their thousands of miles of ocean voyaging, focusing on equipping it for their family to cruise in safety and comfort.

Basic Information

Category: Cruising Sailboat

Sub Category: Sloop

Model Year: 2009

Year Built: 2009

Country: Greece

Vessel Top: Bimini Top

Cockpit: Yes

Dimensions

LOA: 48' 0" (14.63m)

LWL: 40' 3" (12.27m)

LOD: 48' 0" (14.63m)

Beam: 14' 6" (4.42m)

Min Draft: 6' 0" (1.83m)

Max Draft: 6' 0" (1.83m)

Clearance: 73' 0" (22.25m)

MFG Length: 48' 0" (14.63m)

Speed, Capacities and Weight

Displacement: 35000 Pounds

Water Capacity: 264 Gallons

Holding Tank: 42 Gallons

Fuel Capacity: 160 Gallons

Accommodations

Total Cabins: 3

Total Berths: 4

Sleeps: 6

Total Heads: 2

Hull and Deck Information

Hull Material: Fiberglass

Deck Material: Fiberglass

Hull Configuration: Moderate Fin

Hull Color: Blue

Hull Finish: Stainless Steel

Hull Designer: Robert Perry

Exterior Designer: Robert Perry

Interior Designer: Robert Perry

Engine Information

Engines: 1

Manufacturer: Yanmar

Model: 4JH3-TE

Engine Type: Inboard

Fuel Type: Diesel

DETAILED INFORMATION

General

HAVBRIS BLUE is an exceptionally well equipped Tayana 48 Deck House ready to take you to the destinations of your dreams. The owners are very experienced ocean sailors. they ordered this boat and specified all the equipment based on their thousands of miles of ocean voyaging.

They had sailed their previous sailboat, with their three small children, from the northern US south in the Atlantic and across the Pacific ending their cruise in New Zealand. They equipped this Tayana 48DS for their family to cruise in safety and comfort.

Accommodations

Custom teak interior with Italian leather upholstery Port side high low table converts to berth
Three stateroom layout: 2 - Double berths 2- Single berths

Galley

Force 10 three burner LP stove LP solenoid safety switch 12 volt refrigerator 12 volt freezer with top and front loading Corian counter tops Lights in cabinets Microwave oven Electric and Engine heated hot water Eberspacher 8 kw heater

Hull & Deck Construction

Teak on GRP decks Offshore rails and gates both sides Teak seat in bow Two teak seats aft
Teak rub rail with SS rubbing strake

Engines & Mechanical Equipment

Yanmar 75 HP diesel with two racor fuel filters - 1400 engine hours UPGRADED - Gori 3 blade folding propellor Dripless shaft gland Westerbeke 5.5 kW 220v 50 Hz 1500 rpm generator in sound shield - 400 hours 13.5 HP Sleipner Sidepower bow thruster Automatic fire extinguishing system in engine compartment Engine compartment has extra insulation and extraction fan Eberspacher 8 kW heater VDO tank control system Wired and plumbed for water maker (none installed)

Electrical System

230 volt 50 Hz AC electrical system and 12 volt DC system Newmar ES-5 Elite AC/DC electrical panel 25 meter 16 amp shore power cord Westerbeke 5.5 kW generator (1500 rpm) in sound

shield - 400 hours Victron Energy 3000 watt inverter 75 amp control system 810 amp house batteries, two banks, AMG Separate start battery for engine Separate start battery for generator Two separate batteries for bow thruster Night courtesy lights Lights in cupboards Tecma Silent electric toilets with bidets

Plumbing & Ventilation

2 -stall showers Transom shower Electric and Engine heated hot water 3 - automatic sump pumps Manual bilge pump Filters on all salt water intakes Water tank stainless - 1000 Liters Fuel Tank stainless - 605 Liters Holding tank composite - 160 Liters Macerator pump for holding tank Eberspacher 8 kW heater

Electronics & Navigation

Compass Furuno Chart Plotter/GPS Furuno Auto Pilot Furuno Depth Sounder Northstar VHF and hand held VHF Furuno Wind/Speed Indicator Furuno Speed and Distance Log

Sailing Instrumentation

Furuno Speed and Distance Indicator Furuno Wind Speed and Direction Indicator Furuno Depth Sounder

Entertainment Equipment

LCD TV in salon DVD stereo in salon Stereo Speakers in cockpit DVD Stereo in aft cabin

Deck Equipment

Maxwell VWC 2200 electric windlass with 100 m chain 35 kg stainless CQR anchor, Offshore type bow roller Deck pressure wash down at bow Aluminum toe rail Three pad eyes on cockpit Macerator pump for holding tank LPG tank locker. New Bimini top 2017 Transom shower

Spars, Sails & Rigging

Selden mast Leisurefurl furling boom, Profurl roller furling genoa Removable staysail stay UK fully battened mainsail UK genoa UK staysail Lewmar electric 48 CEST main halyard winch Lewmar 68 CEST electric genoa winches, Mast guard rails port and starboard Insulated back stay

Tenders

11' Avon inflatable with 8 HP Yamaha outboard engine Outboard engine storage bracket on deck

Exclusions

Owner's personal belongings.

Disclaimer

The Company offers the details of this vessel or yacht in good faith but cannot guarantee or warrant the accuracy of this information nor warrant the condition of the vessel. A buyer should instruct his representatives, agents, or his surveyors, to investigate such details as the buyer desires validated. This vessel or yacht is offered subject to prior sale, price change, or withdrawal without notice.

PHOTOS

Exterior



Exterior



Helm & Cockpit



Deck Hardware By Lewmar



On Deck Storage



Salon



Salon



Salon



Salon



Salon



Salon & Nav Desk



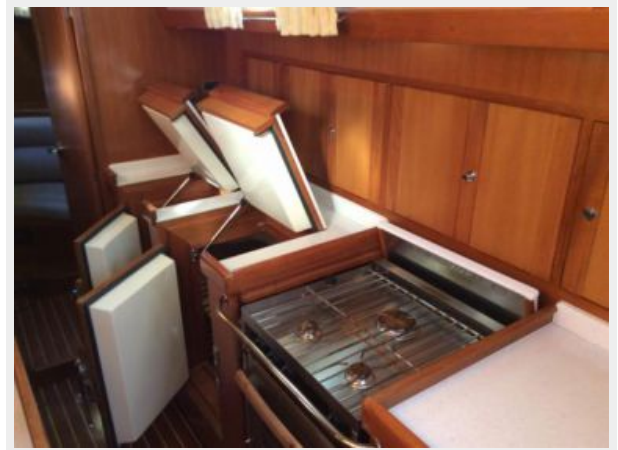
Navigation Station Desk



VHF Radios



Galley



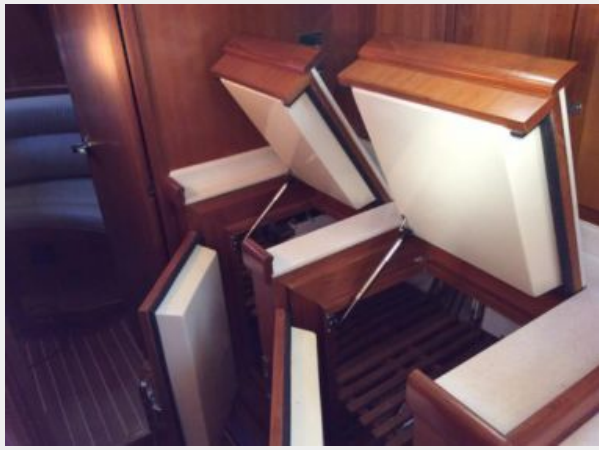
Galley



Galley



Galley



Galley



Galley



Aft Double Stateroom



Forward Double Stateroom



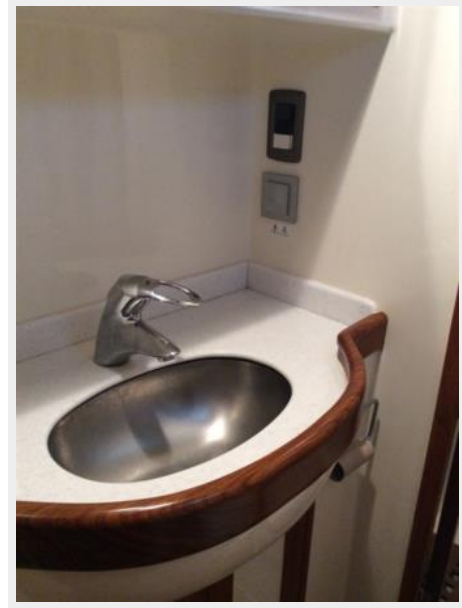
2 Berth Stateroom



Aft Head & Shower



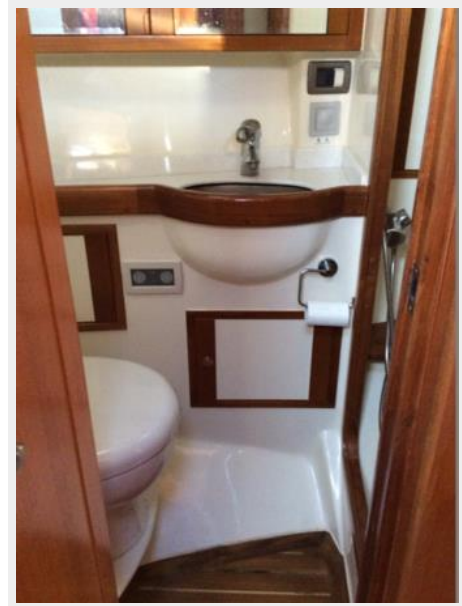
Aft Head & Shower



Aft Head & Shower



Forward Head & Shower



Forward Head & Shower



Engine Compartment



Generator



Engine Compartment Raw Water Manifold



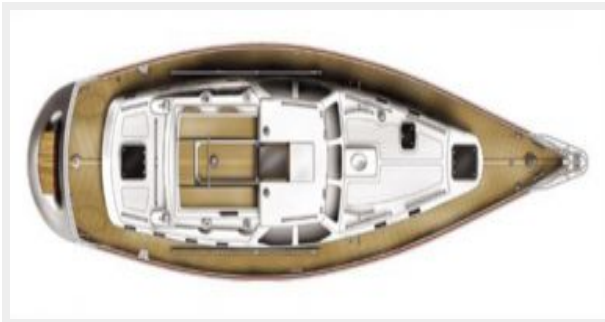
Engine Compartment



Generator Compartment Access



Tayana 48DS Deck Layout Drawing



Tayana 48DS Cabin Layout Drawing



CONTACTS

Andrey Shestakov, leading yacht broker of the sales department of Shestakov Yacht Sales Inc. Shestakov Yacht Sales Inc., the official representative of the Miami/Fort Lauderdale FL headquarters.

Contact details

Email: andrey@shestakovyachtsales.com

Web: shestakovyachtsales.com/en/

Telephones

USA: +1(954)274-4435

Office hours

Monday – Saturday: **9:00 - 21:00** EDT

Sunday: **closed**

Address



Harbour Towne Marina, 850 NE 3rd St,
STE 213, Dania, FL 33004