

SARAFIN — DUBOIS



Судостроитель: DUBOIS

Длина общая: 101' 0" (30.78m)

Год постройки: 2011

Модель: Крейсерская яхта

Цена: ЦЕНА ЯХТЫ ПО ЗАПРОСУ

Местонахождение: Spain

Купить Sarafin — DUBOIS а также выбрать подходящую вам яхту из нашего каталога яхт вам поможет опытный яхтенный брокер Андрей Шестаков. На сегодняшний день компания Shestakov Yacht Sales Inc. имеет большое количество яхт в собственном списке продаж, а также тесно сотрудничает со всеми крупными яхтенными производителями по всему миру.

Для того чтобы купить яхту Sarafin — DUBOIS а также проконсультироваться по любому вопросу связанному с покупкой, продажей, чартером яхт позвоните по телефону **+7(918)465-66-44**.

ОГЛАВЛЕНИЕ

ОГЛАВЛЕНИЕ	2
ХАРАКТЕРИСТИКИ	3
Обзор	3
Основная информация	3
Размеры	3
Размещение	4
Корпус и палуба	4
Информация о двигателе	4
ПОДРОБНОЕ ОПИСАНИЕ	5
Specification	5
Исключения	11
Отказ от ответственности	11
ФОТОГРАФИИ	12
КОНТАКТЫ	18
Контактная информация	18
Телефоны	18
Время работы	18
Адрес	18

ХАРАКТЕРИСТИКИ

Обзор

The elegant Oyster 100 *Sarafin* by Dubois, is offered for sale for the first time in 6 years since her launch in 2011 through our company.

Sarafin is the first in class and designed with the specification, features and classification of much larger yachts. Her accommodation layout offers three sumptuous staterooms aft and two crew cabins forward. With panoramic views from the raised saloon which leads forward and down to a further lounge and office area. Forward of the main living arrangement is the crew mess, galley and two crew cabins. Sarafin is a near silent vessel under power and even when running a generator thanks to her soft mounted interior.

Still in her original ownership, Sarafin has completed extensive cruising privately by the family and friends. She is lying in Palma de Mallorca, having just completed her 5 year Lloyds survey in March 2017. This circa 745K refit and ongoing works include: New mainsail & blade, both generators completely rebuilt, extensive service of main engine and drive train, new standing rigging, new service batteries, all through hull valves serviced or replaced. Full details of the recent works are included in the specification.

Sarafin couldn't be in a finer condition since her launch. Extensively upgraded and professionally maintained regardless of cost she is fully Lloyds and MCA compliant and ready for private use or charter.

She is in turnkey condition and well worth viewing.

Основная информация

Тип судна: Крейсерская яхта

Подкатегория: Sloop

Модельный год: 2011

Год постройки: 2011

Страна: Spain

Кубрик: Да

Размеры

Длина общая: 101' 0" (30.78m)

Размещение

Всего кают: 5

Корпус и палуба

Материал корпуса: Composite

Информация о двигателе

Производитель: Cummins

ПОДРОБНОЕ ОПИСАНИЕ

Specification

HULL NUMBER Oyster 100/01. **HULL CONSTRUCTION** The hull, deck and superstructure are of composite construction (Vinylester resin with its excellent UV resistance and waterproofing qualities and E-glass). Aramid reinforcement fabric is additionally used in the underwater hull shell, whilst carbon fabric is additionally used in the topsides. **HULL FINISH** Topsides are finished in gelcoat, whilst below the waterline the hull is treated with the Awlgrip 'Maximum Underwater Barrier System', comprising primers, epoxy primers and anti-fouling paint. Hull Polymer polished. White hull with cove line and boot top line Light Grey. **DECK CONSTRUCTION** Resin infused lay-up GRP, incorporating Kevlar and Carbon. **DECK FINISH** Teak laid decks with bulwark radiused into a flat top to form a sheer rail. Teak deck sanded (2017). **KEEL** High performance bulb (HPB) external lead keel. **RUDDER** The rudder is a semi-balanced aerofoil section with carbon rudderstock and the blade constructed from E-glass composite. **STERN DESIGN** Reverse stern with hydraulically opening transom door. A swim platform at the transom hydraulically closes onto the lazarette and is watertight when closed and dogged. Stairs are built on the port side of the lazarette opening and can be lifted to increase athwartships access to lazarette. Transom repainted. **CLASSIFICATION** Lloyds 100 A1 SSC Yacht Mono G6 MCH. Lloyd's 5 year survey completed (2016/2017) with £450,000 total refit spend. **CHARTER CODING** Built to MCA Large Commercial Yacht Code (LY2) with all associated safety equipment fitted. **ANCHOR** The main anchor is a 240lb (108kg) CQR with 110m of U2 galvanised chain. Second 240lb anchor with 10m of 12.5mm chain and 100m x 35mm Octoplait warp in the starboard bow anchor locker. Foldaway stainless steel anchor launching system at stemhead. Fortress kedge anchor. **FOREPEAK** Accessed via foredeck hatch. **LOCKERS** Anchor locker and cleaning locker with lines and fender storage. **PORT AND STARBOARD DECK LOCKERS** Two large lockers on deck: 1. Safety equipment. 2. Sails and lines. **WINDLASS** Recessed Lewmar V8 hydraulic anchor windlass. **DECK ACCESS** Midship stanchion gateways port and starboard with stainless steel threshold on the sheer rail at each gate. Provision for a demountable folding stainless steel boarding ladder at each gateway. Gates to pushpit for passerelle and swim platform steps. Swim platform at the transom via a demountable stainless steel extendable swim ladder with oval rungs, mounted on the aft end with dedicated stowage. This ladder may also be used at the port and starboard side gates. Two Carbonautica carbon boarding ladders, one for bathing platform and one for side access. Original stainless ladder stored in container. A hydraulically activated passerelle fitted into the transom behind a watertight door on the starboard side that extends approximately 1.5 metres beyond the aft-most point of the transom (when the transom door is closed). **HATCHES** The aft 'bulkhead' of the deck saloon is formed by glass panels. Access to and from saloon/cockpit is via a powered 'Ranch Slider' door. A removable drop-board is provided to secure across the threshold and thus raise the cockpit sill in heavy weather, as required/dictated by Class. High standard Oyster/Yachtglass flush hatches are fitted throughout and where recessed the coamings are drained. Direct deck access (emergency) hatches are fitted in the lazarette, the master cabin, engine room, and crew mess/galley area. Where appropriate pull down stairs/ladder

mechanisms are concealed in headliners for easy egress in the case of emergency. 4 x flush deck skylights fitted into the deck forward for galley and crew quarter ventilation. 7 x deck hatches/lids to access the anchor wells, sail lockers, halyard pit, side deck lockers and bunker stations. Deck hatch glazing renewed (2014). 12 x fixed portlights. All portholes are Lloyds/MCA compliant with deadlights for each. CANVASWORK Outer City Linen 'Grey'. One set of single layer shade covers for the deck saloon windows. One set of covers for the helm stations and cockpit tables. Helm and aft cockpit bench seats with acrylic canvas seat cushions. A fixed hardtop bimini to provide overhead weather protection to the cockpit. New awning (2015). A removable sprayhood to provide protection around the companionway. New cockpit cushions in Eltis City Linen 'Grey' – colour 82 (June 2016). New dinghy cover (2017). DECK PLUMBING Hot and cold water outlets and handheld shower unit are provided in the area of the swim platform. Freshwater outlets for deck wash at mast, at lazarette and anchor well. Three saltwater fire/deck wash stations; one aft, one amidships and one forward. Sufficient hose is supplied to reach all parts of the vessel with one jet of water. Anchor wash. COCKPIT Walk-through teak-laid cockpit. The guest cockpit is separated from the helmsman's cockpit, but connected via a central walkway giving access to the aft and side decks. The helmsman's cockpit has twin steering positions with 1.20m (48") diameter steering wheels. Both positions have a magnetic steering compass and instrument console, while the starboard position incorporates the engine and bowthruster controls. Both helms have engine and bowthruster controls. Starboard helm has sail controls. Port helm has engine instruments. Between the helmsman's cockpit and the primary and secondary winches on port and starboard sides (aft) are further guest cushioned 'lounging' seats with padded backrests and liferaft stowage beneath. There is a natural teak planked quarter seat built into each pushpit, one port and one starboard. COCKPIT TABLE Two cockpit tables with varnished veneered teak tops, port and starboard and integral fridge in each. STEERING Twin custom GRP steering pedestals, each with a 1.20m (48") diameter Lewmar, Y-spoke, carbon steering wheel. GENERAL Stainless steel custom-made pulpit and pushpit. Stainless steel fairleads. There is also a removable 'Panama' fairlead designed to be fitted when required at the bow on the centreline. Recessed tender well for sea-going stowage of a 4m Nautica Deluxe 14 RIB with Yamaha 60Hp 4-stroke outboard engine on the foredeck. The swim platform has cleats installed in the outboard aft corners for tying the tender painters. Stainless steel mooring cleats/bitts. Large lazarette in stern with direct deck access hatch. Hydraulically operated flip down swim platform also giving stern access to the lazarette. Liferaft stowage beneath aft deck seating lockers. Stern quarter pushpit seats in teak and stainless steel. MAST and RIGGING Mast and V-boom by Hall Spars. Custom carbon spars, keel-stepped, 4-spreader, sloop-rigged in painted finish with hydraulic mast jack and lightning protection. Rig re-headed or replaced, where necessary. Running rigging mostly replaced. Custom carbon V-boom with hydraulic outhaul for a fully battened mainsail. Main boom preventer lines. Sarafin was built with double-headed rig. Reacher furling system and forestay are currently stored in a container and can be retrofitted. Navtec discontinuous rod rigging and stainless steel rigging screws. Removable storm staysail stay with integral manual tensioner. Aramid running backstay. Navtec hydraulic boom vang. Navtec hydraulic outhaul cylinder. Navtec backstay tensioners. Navtec sail halyard tensioners. 4 climbing steps painted colour of mast, near masthead. 4 x folding stainless steel steps located between vang and boom goosenecks for climbing onto boom. Antennae on spar. MAINSAIL FURLING Mainsail furling – Hall Spars. HEADSAIL FURLING Reckmann

RF90-4 hydraulic headsail furling system. Foresail furling – Reckmann RF90-4 Staysail furling – manual – hanked on. WINCHES By Lewmar. All winches are hydraulic. The main sheet runs to a captive reel winch installed below decks to optimise line stowage and efficiency of use. 2 x hydraulic 1 1/3 SS HST primaries. 2 x hydraulic 88/3 SS HST secondaries. 1 x hydraulic CRW 6000 Captive mainsheet. 1 x hydraulic CRW 6000 Captive main halyard 1 x hydraulic 88/3 SS HST headsail halyards (at mast). 1 x hydraulic 77/3 SS HST forward mooring winch.

SPINNAKER GEAR Deck fittings, halyard, topping lift, pole lift, single sheets, fore guy, tack line and all required blocks. SAILS By North Sails. All sails are constructed for optimum shape and performance. Storm Staysail – (T-cut) Spectra Gatorback sandwich S 490 TX. Storm Trysail – (T-cut) Spectra Gatorback sandwich S 390 TX. By Doyle Stratis with taffeta. New mainsail Doyle Stratis Carbon/Ice with White Taffeta (2017). New jib (2015) Doyle Stratis Carbon/Ice with White Taffeta – barely used. North A2 and A4 in storage. GENERAL Ten berths in five cabins, excluding the saloon. All berths are sea berths with lee screens. New high quality pocket sprung mattresses (2014). 4 crew in 2 cabins, 8 guests in 3 guest cabins. All berths have drawers fitted below on sliders with positive catches, where possible. Interior joinery finished in gloss walnut. Headlining in off-white vinyl. Non-watertight doors in all guest and owner accommodation areas are flat fronted and veneered with solid lipped edges set into vertical solid wood frames. Modern flat panel style of upholstery in ‘White/Beige’ Rubelli 758 ‘James Dean’. Galley counter tops and upstands in ‘White’ Carrara marble. Counter tops and upstands in heads in ‘White’ Carrara marble. Cupboards are timber gloss walnut and walls are laminate gloss walnut. Cabin sole in ‘planked’ effect walnut. Galley and crew area soles in Amtico ‘walnut’ hardwearing flooring. New lambs wool carpets to master and guest cabins (2014). Heads and shower floors in guest and owner’s areas finished in Amtico ‘White’ Carrara marble. Top of the range Tecma electric freshwater flush marine toilets throughout. Heated towel rail in each head. Crew covers. Electric Roman blinds to all hullports with accent lighting. External mesh sunscreens for deck saloon windows. Oceanair blinds with skyscreens and blackouts for hatches.

PORT FORWARD DOUBLE CREW CABIN Double berth with hanging locker, shelf and locker space. Aluminum removable pipe cot and mattress to convert to one single on double with ample drawer space under berth. TV and navigation controls, B&G GFD. Door to private en suite head and shower.

STARBOARD FORWARD TWIN CREW CABIN Twin berth crew cabin with upper and lower berths. Hanging locker, shelf and locker space. Door to private en suite head and shower.

GALLEY/CREW MESS White Carrara marble work surfaces with matching upstands. Ironing board. SINKS Stainless steel sinks, under counter mounted. BOILING WATER TAP Quooker. COOKER Miele oven/grill (pyro cleaning). Oven extractor hood. HOB Miele 5 induction hob. MICROWAVE Miele convector microwave. REFRIGERATOR/FREEZER Two large AC driven stainless steel front-opening fridges (that can be used as freezers). One AC driven custom stainless steel chest freezer under galley sole with total capacity of 230 litres. WASHER/DRYER Miele Professional Services washer and separate Miele dryer. One Miele extractor fan.

LOWER SALOON Lower level seating, TV, lounge and ship’s office. One ‘drawer fridge’ at bar area. One AC driven icemaker - Penguin/Vitrofrigo. NAVIGATION AREA Practical navigation station port side in upper saloon area with direct line of sight to outside. Furuno TZT black box navigation system/radar, Nauticomp Glass Bridge display, B&G GFD, B&G Autopilot, Sailor AP5042 Sat-C alarm panel and Sailor RT5022 VHF DSC. ENGINE ROOM Watertight engine room – MCA/Lloyd’s compliant. All engine room bulkheads, tank sides and vertical services, as well as

the deck head are clad with thermal insulation and soundproofing, finished in white. Bilges repainted and through-valves replaced (2017). Treatment plant overhauled. Engine room sole consists of aluminium tread plate panels landed on neoprene strips on bearers. Hatches for access to machinery or valves. A workbench complete with vice and washbasin (plumbed with cold water). Escape hatch in side deck from engine room. UPPER SALOON High-level saloon dining area. New upper saloon cushions (2013). PORT TWIN/DOUBLE GUEST CABIN Comfortable guest cabin situated aft of the high level saloon with steps down to the aft companionway. Twin lower berths that easily convert into a double berth. Pullman bed. One hanging locker with draw and boot locker underneath, one bedside table with draw and small cupboard, 4 large drawers under beds. NAD VISO 5 DVD player and amplifier with iPod dock. EN SUITE HEAD/SHOWER Walnut paneling, Carrara marble shower cubicle and counter top. Hansgrohe Raindance shower and Hansgrohe Axor Citterio taps. Heated towel rail and electric roman blinds. STARBOARD TWIN/DOUBLE GUEST CABIN Comfortable guest cabin situated aft of the high level saloon with steps down to the aft companionway. Twin lower berths that easily convert into a double berth. One hanging locker with drawer and boot locker underneath, one bedside table with drawer and small cupboard and four large drawers under berths. NAD VISO 5 DVD player and amplifier with iPod dock. OWNER'S STATEROOM Aft of the high level saloon and accessed from the aft companionway. Configured with a double berth offset from centerline with comfortable settee to port and desk to starboard. Four large drawers and double hanging locker. NAD VISO 5 DVD player and amplifier with iPod dock. Remote controlled pop-up TV. Safe. Companionway hatch entrance to the aft deck with walnut and stainless steel ladder. EN SUITE HEAD/SHOWER To starboard with walnut paneling, Carrara marble shower cubicle and countertop. Hansgrohe Raindance shower and Hansgrohe Axor Citterio taps. Heated towel rail. Electric roman blinds. AUDIO VISUAL SYSTEMS 32" LCD TV in master cabin. 19" LCD TVs in guest cabins and crew areas. 42" LCD TV in lower saloon. NAD VISO 5 DVD player stereo/CD units with iPod inputs in master cabin and two guest cabins, Revox M51 MK2 in saloon, Alpine mobile media station IVA W520r in the captain's cabin, the crew's cabin and the crew mess. 4 x cockpit stereo loudspeakers linked to saloon unit. ENGINE Cummins QSM11, C-rated engine, 355Hp at 1800rpm with twin disc MG5082A gearbox at 2.53:1. Gearbox and throttle functions are installed at the helm position and in the event of system failure manual control will be possible in the machinery space. PROPELLER Hundested VP 5 FR-HP 998mm variable pitch propeller with Hundested pitch control unit and muff coupling. ALTERNATORS The main engine high output alternator Balmar 94 140 AMP charges the 24V service bank only, through a Balmar Max Charge regulator. The engine charges its own start battery bank via a second Cummins alternator. The two generators charge their own start battery banks via alternators. GENERATOR Two 380V/50Hz/27kW Onan QDMDKBU generators with the following specification (Both rebuilt. Report available): 1500rpm/50Hz. 220/380V 3-phase 27kW. Electric Governor. 24V isolated ground control electrics. Hydrolastic vibration mounts. PTO take-off with 24V clutch. BOWTHRUSTER A hydraulic Lewmar 400 SVTAH vertically retractable 60Hp bowthruster. STEERING SYSTEM Whitlock Mamba torque rod and gearbox steering system. HYDRAULICS Lewmar multi-function hydraulic powerpack, driven from each generators PTO/DC motor. AIR CONDITIONING/HEATING 220V Cruisair air conditioning with three multi-stage compressors, comprising of 48,000 BTU units to give a total of 144,000 BTU's. The air handlers are plumbed directly to the main run with flexible hose to handle both heating water and

chilled water. Each handler fan is thermostatically controlled and equipped with variable speed control. Forced air ventilation system. ICEMAKER Penguin Icemaker. WATERMAKER HEM 25 Series 6000 litres per day/250 litres per hour. FUEL 7,700 litres approximately (1,690 Imp gallons/2,034 US gallons) in two GRP tanks, plus a service tank. WATER 2,660 litres approximately (585 Imp gallons/703 US gallons) in two GRP tanks. TANK TENDER GAUGES Tank gauges to all tanks. Liquid Level Systems hydrostatic pressure sensor with digital displays and remote displays in engine room foyer and synoptic panel. HOT WATER From two insulated approximately 300 litres (65 Imp gallons/79 US gallons) tanks heated by the engine's heat exchanger, or by thermostatically controlled 220V, 2kW immersion heater elements powered by the generator or dockside power. PRESSURISED HOT AND COLD FRESHWATER SYSTEM Throughout the vessel all pipes and pipe fittings are approved by Lloyds. There is a twin pump AC/DC pressure set fitted with accumulators. The suction line from this pressure set to the tank manifold contains an ultraviolet steriliser and small carbon filters in each cold water supply with a larger version fitted in the galley supply. HOLDING TANKS 2 x 750 litres black/grey water tanks built in hull with Liquid Level Systems hydrostatic pressure sensor with digital displays and remote displays on synoptic panel. Deck pump out. GREY WATER All grey water supplies are drained to the tanks via smell traps. Tank cleaning ports and a saltwater wash are installed for each tank. Hot and cold showers discharge into grey water tanks. BLACK WATER The heads are flushed with freshwater only. Tank cleaning ports and a saltwater wash is supplied. MANIFOLD SYSTEM The copper nickel seawater manifold is sized to allow adequate supply to all consumers when the main engine and generators are running. Alarms are fitted to all intakes to sense if the seawater flow becomes restricted. SHIP'S SUPPLY 24V. RINGMAIN 220V/380V, 50Hz single-phase AC ring main 2-Pin European outlet sockets located as appropriate within the layout. Switches and power points are Vimar 'Classica'. OTHER ELECTRICAL SOCKETS Shaving sockets installed in each head. BATTERIES 24V bank for ship's service systems in 'deep-cycle' Sonnenschein gel cells, 1,200Ah. 24V/200Ah Victron Gel emergency bank for ship's safety and bilge pumps. 24V/200Ah Victron Gel radio bank, navigation and radio requirements to MCA LY2. 24V bank for engine's electrical starting system. 24V bank for generators' electrical starting system. Battery monitor. BATTERY MANAGEMENT 3 x Victron Multi 24V/3kW/70A (3-phase 380V) battery chargers/invertor with remote controllers. Chargers replaced with 2 year warranty (2016). 1 x Victron SKYLLA-TG 24V/30A, 220V/50-60Hz battery chargers for navigation/communication bank battery charging. Emergency link. INVERTER 3 x Victron Multi 24V/3kW/70A Charger/Inverter replaced with 2 year warranty (2016). SHOREPOWER 50A dockside power cable. 2 x 50A sockets. Flush Stainless deck plate with powered Glendinning Cablemaster cable reeler. INTERIOR LIGHTING Overhead lighting in both the guest accommodation and crew areas is frosted low voltage spotlights. LED low-level warm-hue accent lighting to all steps. All hanging wardrobes and drinks lockers have internal lighting. Galley has over-counter lighting. Overhead directional spotlight for reading lights in guest accommodation. Picture lights in guest accommodation. Two table lights in the upper saloon. Individually switched lights at each berth. Automatic light to drinks locker Dimmer to upper saloon and aft cabin. Red passage lights in upper saloon. EXTERIOR LIGHTING Discreet bulwark 'style' lighting. 2 x dimmable boom lights. 2 pairs of spreader downlights – one pair to each of the lower spreaders. 5 pairs of uplights. Lopo LED port, starboard and stern navigation lights. Sailing red over green, red aviation. 2 x steaming lights on front of mast. Lopo white

anchor light at masthead and LED red aviation masthead light. Mast lights comply with international regulations. COMPASSES Steering - 2 x Ritchie FN201. 1 x Plastimo Hand bearing compass. SAILING B&G INSTRUMENTS B&G H3000. 1 x B&G 20:20 port and 1 x B&G 20:20 starboard at companionway console. 1 x B&G 20:20 and 2 x B&G GFD at port pedestal. 1 x B&G GFD and 1 x B&G autopilot at starboard pedestal. 1 x B&G autopilot at chart table. 1 x B&G GFD in crew cabin. GPS/RADAR/CHART PLOTTER Furuno TZT Black Box System with 15" Nauticomp Glass Bridge at navigation station with 15" Nauticomp Signature II screens in port and starboard helm stations. Furuno DRS 4A Open Array Radar. Simrad DGPS antenna and differential receiver. Sailor Inmarsat Mini C satellite communication system. AIS Furuno AIS FA50 Class B. AUTOPILOT B&G dual station autopilot, including Halcyon Gyro compass. Hydraulic drive. WINDEX Windex at masthead. NAVTEX McMurdo ICS Nav-7 Tri-band Navtex receiver. VHF RADIO Simrad HS90, dual station VHF radio, waterproof handset at helm and crew mess. Loudspeaker and Class-D DSC. Sailor RT5022 VHF Class-A DSC. Emergency radio batteries. SATELLITE PHONE Sailor Fleet 150 broadband satellite telephone system. PC PC with Internet and email connectivity. VASARI 13A5225A with MaxSea Time Zero can be viewed at helm stations, navigation station and chart table. FLIR Camera on first spreader. Francis searchlight on first spreader. LIFERAFT Two 12-man liferafts, (depending on Class requirements) stowed under aft deck seating lockers (see deck plan). EPIRB Simrad EG50 GPS EPIRB with auto-release bracket. BILGE PUMPS High-powered bilge and fire control pumps. Engine-driven 37mm (1.5") bilge pump with manual clutch. DECK SAFETY 16 x adult lifejackets (with integral harnesses). 4 x children's lifejackets (with integral harnesses). 2 x boathooks. 2 x Jonbuoy MOB modules. Offshore flare kit (SOLAS approved). 4 x SOLAS Life rings. 2 x line throwing appliances. 1 x EPIRB. 1 x Simrad SA50 SART. 1 x Approved signalling lamp (and searchlight). Set of navigation shapes. FIRE EXTINGUISHERS Fire extinguishers in each cabin, lazarette and engine compartment. Automatic engine room fire extinguisher system. Fire blanket in galley. Fire hose and portable fire pump stowed in the deck locker. Other fire fighting and safety equipment as required by Class. ALARMS Fire alarm. Float switches at watertight compartments with led warning lights and alarms. Black water and grey water tanks have high level alarms. OTHER SAFETY FEATURES CCTV camera – FLIR night vision camera on first spreader. Monitor on crew mess TV. Foghorn. Watertight bulkheads and doors. Storm boards/deadlights. RIB/DINGHY 4m Nautica Deluxe 14 Yamaha 60HP Four Stroke. WARPS AND FENDERS 10 x inflatable fenders (100cm x 35cm) with electric pump. 4 x 30m of 22mm warps. 2 x 20m nylon 22mm warps. DIVE COMPRESSOR Coltri Sub MCH-6. SAFE 2 x Isotherm Safe 10 in owner's cabin and in captain's cabin. LARGE INVENTORY OF ASSORTED TOOLS, SPARES AND MANUALS NB: All personal belongings and all other items not expressly listed in the above inventory are excluded from the sale. Viewing through Oyster Brokerage. Inventory not yet verified by the owner. NB: Name 'Sarafin' to be retained by the Vendor. Issue 3 (OG/OB/jg) In this transaction we are acting as Brokers only. We are informed that this sale is not related to the Owner's business, trade or profession. Whilst every care has been taken in their preparation, the correctness of these particulars is not guaranteed. The particulars are intended only as a guide and they do not constitute a term of contract. A prospective buyer is strongly advised to check the particulars and where appropriate to have the vessel fully surveyed and inspected, sea trialled and opened up.

Исключения

При продаже яхты исключаются личные вещи владельца.

Отказ от ответственности

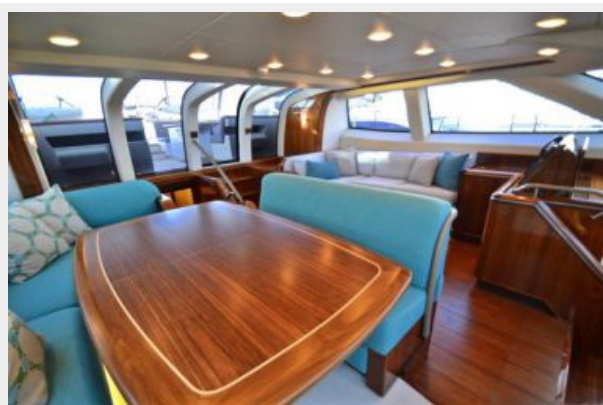
Компания предоставляет описание судна или яхты добросовестно, но не может гарантировать точность этой информации, а также не ручается за техническое состояние. Покупатель должен проинструктировать своих агентов или оценщиков исследовать представленную информацию более подробно, по собственному желанию. Продажа судна или яхты, изменение цены или снятие с продажи будет происходить без предварительного уведомления.

ФОТОГРАФИИ

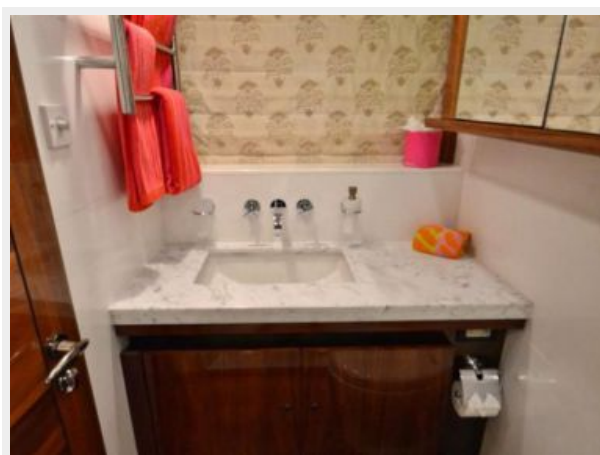
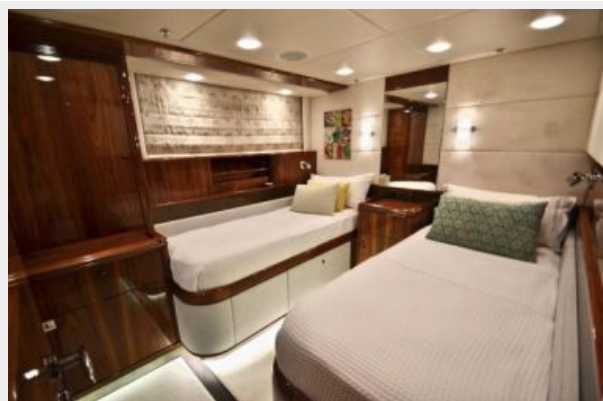












КОНТАКТЫ

Андрей Шестаков (Andrey Shestakov) – ведущий яхтенный брокер отдела продаж яхт и судов компании Shestakov Yacht Sales Inc. Официальный представитель Shestakov Yacht Sales Inc. для русскоговорящих клиентов в центральном офисе компании в Майами/Форт Лодердейл/Флорида/США.

Контактная информация

Email: andrey@shestakovyachtsales.com

Web: shestakovyachtsales.com

Телефоны

Краснодарский край: **+7(918)465-66-44**

США, Майами, Флорида: **+1(954)274-4435**

Время работы

Понедельник – Суббота: **9:00 - 21:00**
EDT

Воскресенье: **Закрито**

Адрес



Harbour Towne Marina, 850 NE 3rd St,
STE 213, Dania, FL 33004