

DEEP BLUE II — OCEANCO



Builder: OCEANCO

Year Built: 1996

Model: Motor Yacht

Price: PRICE ON APPLICATION

Location: Italy

LOA: 144' 5" (44.00m)

Beam: 27' 11" (8.50m)

Max Draft: 7' 11" (2.40m)

Cruise Speed: 13 Kts. (15 MPH)

Max Speed: 19 Kts. (22 MPH)

Our experienced yacht broker, Andrey Shestakov, will help you choose and buy a yacht that best suits your needs **DEEP BLUE II — OCEANCO** from our catalogue. Presently, at Shestakov Yacht Sales Inc., we have a wide variety of yachts available on our sale's list. We also work in close contact with all the big yacht manufacturers from all over the world.

If you would like to buy a yacht **DEEP BLUE II — OCEANCO** or would like help answering any questions concerning purchasing, selling or chartering a yacht, please call **+1(954)274-4435**

TABLE OF CONTENTS

TABLE OF CONTENTS	2
SPECIFICATIONS	4
Overview	4
Basic Information	4
Dimensions	4
Speed, Capacities and Weight	4
Accommodations	5
Hull and Deck Information	5
Engine Information	5
DETAILED INFORMATION	6
Detailed Description	6
Exclusions	16
Disclaimer	16
PHOTOS	17
046	17
045	17
025	17
029b	17
026	17
011	17
006	18
016b	18
001	18
004	18
005	18
043	18
120	19
139	19

058	19
121	19
114 crop	19
125 crop	19
126	20
113 crop	20
097	20
107 crop	20
DEEP BLUE II GA	20
112 crop	20
CONTACTS	21
Contact details	21
Telephones	21
Office hours	21
Address	21

SPECIFICATIONS

Overview

Winner of the Showboats Design Award for vessels over 40 metres, Deep Blue II is an all-aluminium tri-deck motor yacht built to the highest standards by Oceanco in Holland. A major 2018/2019 refit undertaken by the current Owner considered every aspect of life on board, from the comfort of the owner and his guests to the efficiency of the crew and their working areas, and following a great deal of expenditure on his part she is now offered to the sales market in A1 condition and ready for new adventures. Rebuilt engines, new generators, new aircon, interior refit, new AV systems, redesigned sundeck, the list goes on and on. The yacht can accommodate up to 10 guests in a flexible 5 cabin layout and is capable of carrying up to nine crew. She also features newly upgraded zero speed stabilisers, increasing on-board guest comfort whether cruising or at anchor, as well as a full suite of new water toys and equipment. Genuinely a turnkey vessel and well-priced for a quick sale.

Basic Information

Category: Motor Yacht

Model Year: 1996

Year Built: 1996

Refit Year: 2019

Country: Italy

Dimensions

LOA: 144' 5" (44.00m)

Beam: 27' 11" (8.50m)

Max Draft: 7' 11" (2.40m)

Speed, Capacities and Weight

Cruise Speed: 13 Kts. (15 MPH)

Max Speed: 19 Kts. (22 MPH)

Displacement: 606271.2205 Pounds

Gross Tonnage: 440 Pounds

Water Capacity: 5494.7786816 Gallons

Fuel Capacity: 14001.118756 Gallons

Fuel Consumption: 38.040775488 Gallons

Accommodations

Total Cabins: 5

Sleeps: 10

Captain Cabin: True

Crew Cabin: 5

Crew Berths: 9

Hull and Deck Information

Hull Material: Aluminum

Deck Material: Teak

Hull Configuration: Semi-Displacement

Hull Designer: The A Group

Exterior Designer: Oceanco

Interior Designer: Gianrico Fabro/Paolo Rossi

Engine Information

Engines: 2

Manufacturer: DDC/MTU

Model: 12 V 396 TE 94

Fuel Type: Diesel

DETAILED INFORMATION

Detailed Description

```
#edmiston-espec { font-family: 'Helvetica Neue LT Std', 'Sans'; font-weight: 200; font-style:
normal; text-align: justify; text-justify: inter-word; line-height: 1.5em; color: #444; } #edmiston-
espec table { border-spacing: 0px; border-collapse: collapse; } #edmiston-espec td { text-align:
left; vertical-align: top; padding: 0px; margin: 0px; line-height: 1.5em; } #edmiston-espec th { text-
align: left; vertical-align: top; padding: 0px; margin: 0px; width: 5cm; } #edmiston-espec h1 { font-
family: 'Times New Roman','Serif'; color: #DB001E; } #edmiston-espec h2 { font-family: 'Times
New Roman','Serif'; color: #DB001E; } #edmiston-espec h3 { font-family: 'Times New
Roman','Serif'; color: #222; } #edmiston-espec ul { list-style: none; margin: 0; padding: 0 0 0 20px;
} #edmiston-espec li.bullet { list-style: disc; }
```

1. MAIN CHARACTERISTICS

TYPE	◦ Semi Displacement Motor Yacht
HULL	◦ 232
BUILDER	◦ Oceanco
NAVAL ARCHITECT	◦ The “A” Group
EXTERIOR DESIGN	◦ Oceanco
INTERIOR DESIGN	◦ Gianrico Fabro/Paolo Rossi
YEAR	◦ 1996
REFIT	◦ 2007/2019
CLASSIFICATION	◦ ABS, MCA
CONSTRUCTION	◦ Aluminium Hull & Superstructure, Teak decks
CREW	◦ 9 x Crew in 5 cabins
FLAG	◦ Cayman Islands
ENGINES	◦ 2 x 2,250hp MTU 12 V 396 TE 94
GT	◦ 440
NT	◦ 132
DISPLACEMENT	◦ 275 tons / 606,271 lbs

2. DIMENSIONS

LOA	◦ 44.00m/ 144'4”
BEAM	◦ 8.50m/ 27'11”
DRAFT	◦ 2.40m/ 7'10”

3. SPEED & RANGE UNDER POWER

MAXIMUM SPEED	◦ 19 knots
CRUISING SPEED	◦ 13 knots
FUEL CONSUMPTION	◦ 144 l/h @ 10.5 knots

RANGE ◦ 2,800nm

4. FUEL CONSUMPTION

- Knots / rpm / l/min / l/hr
 - 9.00 / 1000 / 0.90 / 108
 - 10.5 / 1100 / 1.20 / 144
 - 11.5 / 1200 / 1.60 / 192
 - 12.0 / 1300 / 2.00 / 240
 - 13.0 / 1400 / 2.30 / 276
 - 14.0 / 1500 / 2.90 / 348
 - 15.0 / 1600 / 3.80 / 456
 - 17.0 / 1700 / 4.50 / 540
 - 17.5 / 1800 / 5.20 / 624

5. CAPACITIES

ACCOMMODATION	◦ 10 x Guests in 4 - 5 cabins
	◦ 3 x Double, 1 x Twin, 1 x Convertible
CREW	◦ 9 x Crew in 5 cabins
FUEL	◦ 53,000 litres / 14,000 US gallons
FRESH WATER	◦ 20,800 litres / 5,495 US gallons
WATER MAKERS	◦ 11,000 litres / 2,960 US gallons
GREY WATER	◦ 9,200 litres / 2,430 US gallons
BLACK WATER	◦ 1,700 litres / 449 US gallons
LUBE OIL	◦ 2,200 litres / 581 US gallons
WASTE OIL	◦ 2,000 litres / 528 US gallons

6. ACCOMMODATION

DEEP BLUE II's intelligent interior design sleeps up to 10 guests in a flexible four or five cabin layout. Comprising a full beam master suite located on the main deck with his & hers en-suite with a bathtub & shower, and with an adjoining master office before entering the main cabin.

On the lower deck, guest quarters include a full beam VIP stateroom forward, which can be easily be converted into two separate cabins by closing the sliding doors (the 5th cabin may then feature either two single beds or a double bed). The two cabins have bathroom with showers. Otherwise, if preferred to keep a large VIP, the two sliding panels will remain open and it is possible to rearrange the beds to form an L shaped settee.

Two additional cabins are located on the lower deck (aft), one double and one twin cabin, both with ensuite bathrooms featuring a bathtub. All bathrooms throughout feature bidets.

7. MECHANICAL EQUIPMENT

ENGINES • 2 x 2,250hp MTU 12 V 396 TE 94 Diesel

ENGINE HOURS • Port: 672 / Stbd: 671 hours November 2020 (fully rebuilt 2019)

SERIAL NUMBERS	<ul style="list-style-type: none">• Port: 558-2519 / Stbd: 558-2520
GEARBOXES	<ul style="list-style-type: none">• ZF BW 465 (Rebuilt 2019)• Part List: 3085-002-110• Serial Numbers: Port: 955 / Stbd: 956
RATIO	<ul style="list-style-type: none">• 3,037; 1 A
PROPELLERS	<ul style="list-style-type: none">• 2 x Shaffran, Class ISO TBCR484 I-S
PROPELLER MATERIAL	<ul style="list-style-type: none">• G-NIALB 28
STABILISERS	<ul style="list-style-type: none">• Quantum QC-1200E Custom zero speed, 4 x• 2.25sqm fins (Major Overhaul 2019)
BOWTHRUSTER	<ul style="list-style-type: none">• 1 x 75kW Cramm Power Unit: QP20.20
GENERATORS	<ul style="list-style-type: none">• 2 x 99kW Kohler (New June 2016)
GENERATOR HOURS	<ul style="list-style-type: none">• Port: 5,311 / Stbd: 4,570 hours November 2020 (Major Service Completed @3200hrs)
GENERATOR MODEL	<ul style="list-style-type: none">• M6108T/HE/99L; 3- Phase /188 A
GEN. FUEL CONSUMPTION	<ul style="list-style-type: none">• 14.5 litres / 3.85 US gallons per hour
ELECTRICITY	<ul style="list-style-type: none">• 220/380 V AC 50 Hz
SHORE POWER	<ul style="list-style-type: none">• 480V / 3Phase 188amps
SHORE CONVERTER	<ul style="list-style-type: none">• Atlas SAE (New Unit 2019)
BATTERY	<ul style="list-style-type: none">• 2 x Master volt 220 VAC 100 AMP

CHARGERS	<ul style="list-style-type: none"> • 1 x Master volt 220 VAC 40 AMP
BATTERIES	<ul style="list-style-type: none"> • Main Engine Starting 8 x 240 amp • Generator Starting 4 x 240 amp Emergency 2 x 240 Amp
AIR CONDITIONING	<ul style="list-style-type: none"> • Heinen & Hopman • New "Marine Air" A/C System 2019 • Including full cleaning of all Air systems and ducting
FAN COILS	<ul style="list-style-type: none"> • 22 x Fan Coils new 2016
MAKE UP AIR	<ul style="list-style-type: none"> • New System 2016
WATER MAKER	<ul style="list-style-type: none"> • 2 x Idromar @ 5,500 litres / 1,450 US gallons p/ day
SEWAGE SYSTEM	<ul style="list-style-type: none"> • Complete new Black/Grey water treatment plant
EVAC	<ul style="list-style-type: none"> • system with Latest ORCA IV (2017)
FUEL SEPARATOR SYSTEM	<ul style="list-style-type: none"> • Alfa Laval MAB 103B 2 x Matrix Silver (rebuild 2019)
DESALINATION SYSTEM	<ul style="list-style-type: none"> • Series R/O units with 5,000 litres / 1,320 • U.S. Gallon capacity each (Fully Overhauled 2019)
REFRIGERATION	<ul style="list-style-type: none"> • Air Dryer- CDX 13bar 600 litres/1 (full service 2019)
1. NAVIGATION EQUIPMENT	
RADAR	<ul style="list-style-type: none"> ◦ 2 x Furuno FAR 2827
MAGNETIC COMPASS	<ul style="list-style-type: none"> ◦ Plath
NAVIGATION SYSTEM	<ul style="list-style-type: none"> ◦ 2 x Garmin 5008/ MX420
AIS / GPS	<ul style="list-style-type: none"> ◦ Furuno FA 150 (To be updated 2019/20) ◦ 1 x Anschütz STD20 BSH/046/34G/95
GYRO COMPASS	<ul style="list-style-type: none"> ◦ 1 x Anschütz STD22 BSH/046/34G/2016 (Serviced 2019) ◦ Anschütz BSH/46/33G/94 repeater
CHART SYSTEM	<ul style="list-style-type: none"> ◦ Transas Navi Sailor 3000 RCDIS-I Version 4.00.01 (Updated Quarterly)

- AUTOPILOT** 8 Anschütz KIEL DH1046/32S/88
- ECHOSOUNDER** 8 Furuno FE 700
- DOPPLER SPEED LOG** 0 Furuno DS 80
- WIND INSTRUMENTS** 0 B&G Hydra 2000
- NAVTEX** 0 Furuno NX 500
- SOUNDER** 0 Furuno 20cm above Keel
- TRANSDUCERS** 0 Dataline 24cm above Keel
- 0 Doppler 21cm above Keel
- MAPPING** 0 Garmin GPS MAP 8215 (2015)
- AP CONTROLLER** 0 New Internet AP Controller for 3 separate internet
- 0 Services
- 2. COMMUNICATION EQUIPMENT
- INMARSAT** 0 MINI-C Furuno Felcom 16
- INTERNET** 0 Sailor V800 (new 2018)
- SAT TELEVISION** 0 Seatel 4004
- VHF/DCS** 0 3 x Sailor Compact RT 2048
- 0 Icom (new 2017)
- HF RADIO** 0 New HF Radio system ICOM (2017)
- LRIT/ SSAS** 0 Furuno 16
- 3. DECK EQUIPMENT
- ANCHORS** 0 2 x Poole type 310kg/683lb
- ANCHOR CHAINS** 0 2 x 16mm stud link, 1 x 5 shackles 1 x 6 shackles
- WINDLASSES** 0 2 x Maxwell VWC 10000c vertical hydraulic
- CAPSTANS** 0 2 x Maxwell VC-3500 vertical Capstans
- PASSERELLE** 0 1 x Motomar
- SIDE BOARDING** 0 1 x Cramm starboard side gangway
- DECK CRANES** 0 1 x Opacmare with SWL 2,500kg (8mm fibre cable)
- 0 1 x Sanguinetti with SWL 800kg (6mm cable)
- 4. GALLEY & LAUNDRY EQUIPMENT
 - 0 GALLEY
 - 2 x Miele Miele H6260BP oven (2019)
 - 1 x Miele 2 place Induction cooktop 1 x Miele 4 place Induction cooktop (new 2019)
 - 1 x Miele M6032 Microwave (2019)
 - Heinen & Hopman Custom 4-Door refrigerator
 - Heinen & Hopman freezer custom walk-in 32 sq ft (New 2017)
 - New Fridge & Freezers compressors & condensers (2017)
 - 1 x Miele 7856 dishwashers
 - 1 x Extractor Fan System
 - 0 OTHER APPLIANCES

- 1 x Miele KWT 4154 Wine Cooler
- 2 x Uline Refrigerators (1-Skylounge, 1-Aft Main Deck)
- 1 x Miele 7855 Dishwasher (Skylounge)
- 1 x Hoshizaki icemaker (2015)
- 1 x Scotsman icemaker ACM 45
- 1 x Isotherm icemaker 45
- 1 x Miele barbeque grill
- 1 x Miele fryer
- CREW GALLEY / MESS
 - Rice Cooker – Electrical Jag
 - 1 x Whirlpool fridge (2014)
 - 1 x Kenwood microwave (2014)
 - 1 x Bosch Series 4 dishwasher (2019)
- LAUNDRY & DOMESTIC EQUIPMENT
 - 2 x Bosch Series 6 washing machines (2019)
 - 1 x Miele PT 7136 dryers
 - 1 x Bosch Series 6 dryer
 - 1 x Miele HM5310 Roller Iron
 - 2 x Vaporella Professional Steam Iron (2017)
 - 2 x Miele Vacuum set
 - 1 x Jet Steamer
 - 1 x Carpet Steamer

5. ENTERTAINMENT EQUIPMENT

- New AV, TV and stereo system throughout the yacht in 2019
- New Wi-Fi system throughout incorporating latest technologies for better connectivity in 2019

6. SECURITY EQUIPMENT

CCTV SYSTEM	○ Yachtica
CAMERAS	○ 5 x 2 Motorized (Engine room & mast)
MONITORS	○ 2 x Monitors (Bridge and Crew Mess)
FIRE CONTROL SYSTEM	○ 7 Zone Thorn Fire Control System
FIRE EXTINGUISHERS	○ 38 x Dry Powder
ALARMS	○ 32 x Smoke alarms
	○ 5 x Heat alarms

MECHANICAL EQUIPMENT

ENGINES • 2 x 2,250hp MTU 12 V 396 TE 94 Diesel

ENGINE HOURS • Port: 672 / Stbd: 671 hours November 2020 (fully rebuilt 2019)

SERIAL NUMBERS • Port: 558-2519 / Stbd: 558-2520

GEARBOXES	<ul style="list-style-type: none">• ZF BW 465 (Rebuilt 2019)• Part List: 3085-002-110• Serial Numbers: Port: 955 / Stbd: 956
RATIO	<ul style="list-style-type: none">• 3,037; 1 A
PROPELLERS	<ul style="list-style-type: none">• 2 x Shaffran, Class ISO TBCR484 I-S
PROPELLER MATERIAL	<ul style="list-style-type: none">• G-NIALB 28
STABILISERS	<ul style="list-style-type: none">• Quantum QC-1200E Custom zero speed, 4 x• 2.25sqm fins (Major Overhaul 2019)
BOWTHRUSTER	<ul style="list-style-type: none">• 1 x 75kW Cramm Power Unit: QP20.20
GENERATORS	<ul style="list-style-type: none">• 2 x 99kW Kohler (New June 2016)
GENERATOR HOURS	<ul style="list-style-type: none">• Port: 5,311 / Stbd: 4,570 hours November 2020 (Major Service Completed @3200hrs)
GENERATOR MODEL	<ul style="list-style-type: none">• M6108T/HE/99L; 3- Phase /188 A
GEN. FUEL CONSUMPTION	<ul style="list-style-type: none">• 14.5 litres / 3.85 US gallons per hour
ELECTRICITY	<ul style="list-style-type: none">• 220/380 V AC 50 Hz
SHORE POWER	<ul style="list-style-type: none">• 480V / 3Phase 188amps
SHORE CONVERTER	<ul style="list-style-type: none">• Atlas SAE (New Unit 2019)
BATTERY CHARGERS	<ul style="list-style-type: none">• 2 x Master volt 220 VAC 100 AMP• 1 x Master volt 220 VAC 40 AMP

- BATTERIES**
 - Main Engine Starting 8 x 240 amp
 - Generator Starting 4 x 240 amp Emergency 2 x 240 Amp

- AIR CONDITIONING**
 - Heinen & Hopman
 - New “Marine Air” A/C System 2019
 - Including full cleaning of all Air systems and ducting

- FAN COILS**
 - 22 x Fan Coils new 2016

- MAKE UP AIR**
 - New System 2016

- WATER MAKER**
 - 2 x Idromar @ 5,500 litres / 1,450 US gallons p/ day

- SEWAGE SYSTEM**
 - Complete new Black/Grey water treatment plant

- EVAC**
 - system with Latest ORCA IV (2017)

- FUEL SEPARATOR SYSTEM**
 - Alfa Laval MAB 103B 2 x Matrix Silver (rebuild 2019)

- DESALINATION SYSTEM**
 - Series R/O units with 5,000 litres / 1,320
 - U.S. Gallon capacity each (Fully Overhauled 2019)

- REFRIGERATION**
 - Air Dryer- CDX 13bar 600 litres/1 (full service 2019)

1. SAFETY EQUIPMENT

- LIFE RAFTS**
 - 2 x 16-person
 - 2 x Viking 2012 10-person
- LIFE RINGS**
 - 5 x Total - 2 w/smoke & lights attached (2019)
- EPIRBS**
 - 1 x McMurdo
 - 8 x Orange smoke
- FLARES**
 - 10 x Red Hand Flares
 - 12 x Parachute Flares
- MEDICAL**
 - 2 x Full sets
 - 2 x Oxygen Cylinders

2. TENDERS & WATERSPORTS EQUIPMENT

- TENDERS

- 1 x Novurania 6m tender with a Volvo Penta diesel stern drive 240hp
 - 1 x Novurania 3m tender with a Yamaha outboard 20hp
 - WATERSPORTS
 - 1 x Yamaha FXSVHO Waverunner 3 seats (2015)
 - 1 x Yamaha Stand-up 700cc Jet Ski (New 2018)
 - 2 x Sea Bobs (New 2018)
 - 1 x Wakeboard
 - 1 x Pair of Childrens Waterskis
 - 1 x Pair of Adult Waterskis
 - 2 x Monoskis
 - 2 x Paddleboards
 - 1 x Sea Kayak
 - 1 x Inflatable Trampoline
 - 1 x Knee board
 - Various inflatable water toys (donut, mantaray, double seat donut, inflatable chair)
 - GYM EQUIPMENT
 - New gym equipment: weights and running machine (New 2019)
- ### 3. MAINTENANCE & REFIT NOTES
- 2019 MAJOR REFIT
 - A major refit was undertaken during the 2018 – 2019 winter (including but not limited to) an upgrade of the aesthetic look of the exterior, significant comfort improvements to the interior, as well as very detailed engineering and technical improvements and renewals. All of these highly improve the yacht's appearance and overall feel and comfort.
 - TECHNICAL REFIT
 - Total rebuild of MTU engines and gearboxes to zero hours using the authorised MTU dealer
 - New plumbing and hot water system throughout the vessel
 - Rebuild and service of all pumps, cranes and hydraulic systems
 - Upgraded Stabilisers - anticipated 30% improvement to stability
 - New A/C system, with detailed purification and cleaning of all air vents with proper biological certification
 - Extraordinary amount of detailed maintenance, renewal and servicing of all technical equipment and areas on board including a full cosmetic revamp of the engine room
 - INTERIOR
 - New light and luxurious soft furnishings to lighten/modernise all areas
 - All leather surfaces re-covered
 - Introduction of artwork and additional mirrors throughout
 - Upgrade of bathroom flooring and general amenities
 - Rebuild and modernisation of spa bath equipment
 - Upgrade and refresh of the crew quarters
 - Refit galley and laundry with new ovens and other appliances

- AUDIO
 - & VISUAL EQUIPMENT
 - New AV, TV and stereo system installed throughout the yacht
 - New Wi-Fi system installed throughout, incorporating latest technologies for better wireless internet connectivity
- MAIN SALOON
 - New Wenge flooring
 - New loose furniture
 - New high-quality fully retractable curtains providing full views through the glass windows improving the exterior viewing capacity by about 20%
 - Re-designed to be open plan: the centrepiece of the saloon was removed to offer a wider and more open entertaining space
- BRIDGE DECK
 - Completely refurbished bridge deck lounge
 - New loose furniture incorporated for a more modern and stylish look
 - New flooring installed (a darker timber now matching the main deck floor)
 - New blinds to allow more light and a better view
- EXTERIOR
 - Exterior repaint of all window lines and other areas in black to give a much more sleek modernised look to the vessel overall
 - Redesign of the sundeck, including a 5m roof extension for both aesthetics and shade purposes
 - Removal of the tender cradle and addition of four sun loungers
 - New lounge cushions & exterior furnishings
 - New Barbecue on the Sundeck
 - New gym equipment (weights and running machine)
- 2017:
 - Circa €2M EUR refit, including full hull and superstructure paint job
 - New generators
 - Interior refurbishment including some new carpeting, some new fabrics, new wood flooring in certain areas, all new exterior furniture/cushions

4. COMMENTS

Winner of the Showboats Design Award for vessels over 40 metres, Deep Blue II is an all-aluminium tri-deck motor yacht built to the highest standards by Oceanco in Holland. A major 2018/2019 refit undertaken by the current Owner considered every aspect of life on board, from the comfort of the owner and his guests to the efficiency of the crew and their working areas, and following a great deal of expenditure on his part she is now offered to the sales market in A1 condition and ready for new adventures. Rebuilt engines, new generators, new aircon, interior refit, new AV systems, redesigned sundeck, the list goes on and on. The yacht can accommodate up to 10 guests in a flexible 5 cabin layout and is capable of carrying up to nine crew. She also features newly upgraded zero speed stabilisers, increasing on-board guest comfort whether cruising or at anchor, as well as a full suite of new water toys and equipment.

Genuinely a turnkey vessel and well-priced for a quick sale.

Exclusions

Owner's personal belongings.

Disclaimer

The Company offers the details of this vessel or yacht in good faith but cannot guarantee or warrant the accuracy of this information nor warrant the condition of the vessel. A buyer should instruct his representatives, agents, or his surveyors, to investigate such details as the buyer desires validated. This vessel or yacht is offered subject to prior sale, price change, or withdrawal without notice.

PHOTOS

045



046



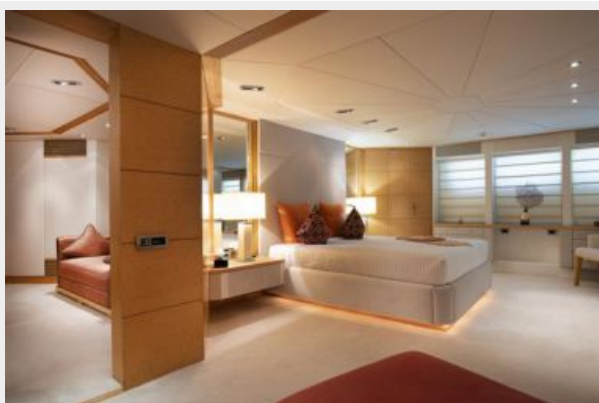
025



029b



026



011



006



016b



001



004



005



043



139



120



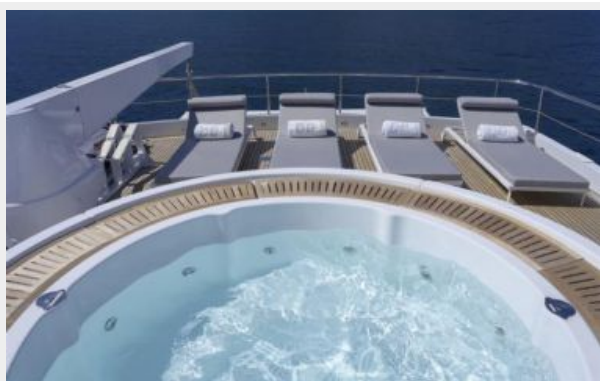
121



058



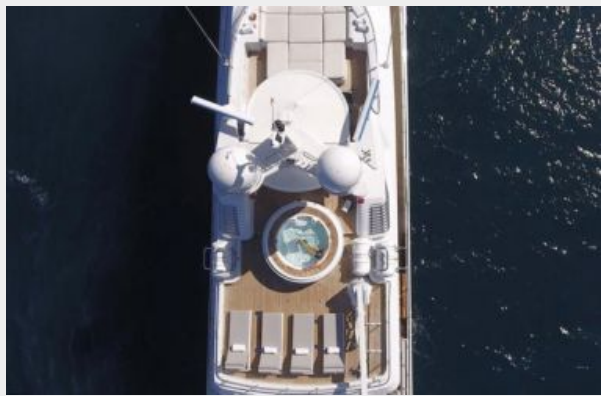
125 crop



114 crop



113 crop



126



097



107 crop



112 crop



DEEP BLUE II GA



CONTACTS

Andrey Shestakov, leading yacht broker of the sales department of Shestakov Yacht Sales Inc. Shestakov Yacht Sales Inc., the official representative of the Miami/Fort Lauderdale FL headquarters.

Contact details

Email: andrey@shestakovyachtsales.com

Web: shestakovyachtsales.com/en/

Telephones

USA: +1(954)274-4435

Office hours

Monday – Saturday: **9:00 - 21:00** EDT

Sunday: **closed**

Address



Harbour Towne Marina, 850 NE 3rd St,
STE 213, Dania, FL 33004