

SUNNY DAY'S — MARINE TRADER



Судостроитель: MARINE TRADER

Год постройки: 1988

Модель: Trawler Yacht

Цена: ЦЕНА ЯХТЫ ПО ЗАПРОСУ

Местонахождение: United States

Длина общая: 44' (13.41mm)

Ширина: 14.33

Макс. осадка: 4' 4" (1.32mm)

Купить **Sunny Day's — MARINE TRADER** а также выбрать подходящую вам яхту из нашего **каталога яхт** вам поможет опытный яхтенный брокер Андрей Шестаков. На сегодняшний день компания **Shestakov Yacht Sales Inc.** имеет большое количество яхт в **собственном списке продаж**, а также тесно сотрудничает со всеми крупными **яхтенными производителями** по всему миру.

Для того чтобы купить яхту **Sunny Day's — MARINE TRADER** а также проконсультироваться по любому вопросу связанному с покупкой, продажей, чартером яхт позвоните по телефону **+7(918)465-66-44**.

ОГЛАВЛЕНИЕ

ОГЛАВЛЕНИЕ	2
ХАРАКТЕРИСТИКИ	3
Обзор	3
Основная информация	6
Размеры	7
Скорость, вместимость и масса	7
Размещение	7
Корпус и палуба	7
Информация о двигателе	7
ФОТОГРАФИИ	8
КОНТАКТЫ	13
Контактная информация	13
Телефоны	13
Время работы	13
Адрес	13

ХАРАКТЕРИСТИКИ

Обзор

Sunny Day's is an impressive vessel. These vessels were built in Formosa with all the components being of high quality. Large and comfortable, Sunny Day's has been enjoyed by her knowledgeable Sea Captain owner on a regular basis.

Sunny Day's is not a dock queen!

This vessel has had her teak decks replaced by a durable artificial teak decking material. One fuel tank has been replaced with an aluminum tank and the windows are in good condition.

The ZF transmissions allow this vessel to be run continuously on one engine for extended passages. The dripless stuffing boxes are both lubricated with either engine running.

This vessel also has the ability to get up and go if needed. The Ford Lehman main engines are 275 hp. each.

This vessel is very well equipped with electronics, including radar.

Vessel is now in fresh water with 2016 bottom job.

Please be sure to see extensive photo's, video and full specifications including walk through.

Things to Consider:

* New 2016: Bottom refinished with anti-fouling paint applied. * New 2016: Salon reverse cycle AC with dehumidifier installed. * New 2016: Ac unit can cool entire vessel alone. One of three. * New 2016: Inverter charging system with parallel switch. * New 2016: Two 125 amp. alternators. One on each engine. * New 2016: Kenwood stereo system with speakers. * New 2016: Shower floor in guest head. * New 2016: Replaced U-Line ice maker internal components (all). * New 2016: Brightwork refinished with Petit product. * New 2016: Aft bilge pump float switch. * New 2016: Forward shower sump. Complete unit. * New 2016: Free standing dehumidifier. * New 2016: Generator raw water cooling pump. * New 2016: New Gen 12 battery. * New 2016: Port engine relay switch. * New 2016: Emerson flat screen 32' TV. * New 2016: Macerator pump.

Boat Name Sunny Day's Specs Flag of Registry: United States Hull Shape: Semi-Displacement Dimensions LOA: 43 ft 6 in Beam: 14 ft 4 in LWL: 38 ft 8 in Maximum Draft: 4 ft 4 in Displacement: 33000 lbs Bridge Clearance: 22 ft 0 in Headroom: 6 ft 6 in Engines Engine 1: Engine Brand: Lehman Year Built: 1988 Engine Model: 2728-E Engine Type: Inboard Engine/Fuel Type: Diesel Location: Port Engine Hours: 2688 Propeller: 3

blade propeller Drive Type: Direct Drive Engine Power: 275 HP Engine 2: Engine Brand: Lehman Year Built: 1988 Engine Model: 2728-E Engine Type: Inboard Engine/Fuel Type: Diesel Location: Starboard Engine Hours: 2687 Propeller: 3 blade propeller Drive Type: Direct Drive Engine Power: 275 HP Tanks Fresh Water Tanks: 3 (250 Gallons) Fuel Tanks: 2 (500 Gallons) Accommodations Number of double berths: 3 Number of cabins: 2 Number of heads: 2 Electronics Depthsounder - Lowrance Fish Finder Down/Furuno Up Plotter - Garmin Multifunctional Up and Down Log-speedometer - Displayed on Garmin Multifunctional Pltters up and down Radio - kenwood Stereo/CD CD player - Kenwood Stereo/CD GPS - Garmin Multifunctional Up and Down Radar - Garmin Displayed on Multifunctional Screens Autopilot - Robertson AP22 Down/AP20 Up Compass - Danforth Magnetic Up and Down TV set - Emerson 32" Flat Screen VHF - Standard Horizon Intrepid Cockpit speakers - Inside, Outside and Flybridge VCR - Samton Inside Equipment Battery charger - Charles 40 amp. Heating - Reverse Cycle Microwave oven - Emerson Electric head - Forward and Aft Electric bilge pump - Three Air conditioning - Three with Salon AC Being New Hot water - GE 10 gal. Refrigerator - Kenwood Refrigerator/Freezer Down and Magic Chef UP Deep freezer - Frigibar on Flybridge Oven - Magic Chef Propane Stove and Oven Electrical Equipment Shore power inlet - Dual 30 amp. Generator - Westerbeke 8KW Inverter - Magna Sine Electrical Circuit: 12V Outside Equipment/Extras Teak sidedecks - Faux Teak Tender - Achilles 8' Davits - Stainless Teak cockpit - Faux Teak Swimming ladder - Stainless Electric windlass Covers Bimini Top - Full Flybridge Enclosure

Forward Head:

* Very large with full length sink area. * Two very large mirrors. * Electric head to holding tank. * Separate shower stall with seat and teak grate floor. * Under sink cabinetry and medicine cabinet.

Forward Stateroom:

* Large "V" type berth with filler section to fill gap. * Hang up closet. * Under berth drawers and storage. * Reading lights. * Overhead hatch for ventilation. * Comfort control panel.

Engine:

* Two Lehman Mod. 2728-E 275 hp. each turbo charged mains. * Port main engine with 2688 operating hours. * STBD main engine with 2687 operating hours. * Two ZF PRM new age series 601 transmissions. * Note: Can safely run on one engine continuously. * Stuffing boxes are cross lubricated/ props can freewheel. * Groco sea strainers. * Four Racor 900 fuel/water sep. filters with throw handles. * Labeled fuel manifold. * Two crank vents models CV-1000. * Engineroom vent blower. * Lift mufflers for each engines.

Electrical:

* Shore power inlet dual 30 amp. * Westerbeke BTD-8.0 8 KW generator 6841 hrs. * Electrical breaker panel/12 VDC and 110 VAC. * Battery select switch. * Shorepower/generator select switch. * Charles 40 amp. Battery charger. * Magnum inverter. * New 125 amp. engine alternators. Both engines. * Inverter charge system from main engine/charge inverter batts. * Solenoid parallel switch. * Two 8D house batteries. * Four 6v batteries for inverter. * Gen panel: Oil temp, water temp., voltage/preheat, start and stop.

Mechanical

* On demand hot and cold pressure water pump. * 10 gal. water heater. * Three bilge pumps. * Shower sumps. * On demand washdown system. * Three AC units. Salon unit is new 2016.

Deck:

* Anchor windlass 12 VDC with sprocket and gypsy. * Windlass can be controlled from bridge or locally. * 40 lb. CQR plow with spare Danforth. * All chain rode. * Fiberglass bow pulpit. * Stainless rails. * Fender holders fore and aft. * Teak decks removed. Faux teak decks installed. * Stainless chocks and cletes. * Magma barbeque propane grill. * Aluminum mast, freshly painted with radar scanner/ spreader lights. * Mast can be lowered/with electric winch. * Lazarette hatch in cockpit. * Stainless dinghy davits. * Eight foot Achilles dinghy with 9.9 hp. Mercury outboard. * Mooring lines and Fenders. * fiberglass swim platform. * Directional antenna. * Recently refinished teak.

Vessel Walk Through:

Stepping aboard and through the port side gate there is a sliding door convenient to make entrance. One notices the faux teak decks almost immediately.. These are quite attractive and durable.

Continuing up the port side deck, which is wide enough for an easy trip to the bow. Here is heavy anchoring equipment, which is well laid out. The rails are straight and everything is organized. The anchor can be operated from this position or from the Flybridge. A washdown system is here for cleaning off the anchoring equipment as it comes in.

Continuing down the starboard side deck you will come to another sliding door at the inside Helmsmans position. This is very handy for moving to the bow, when needed.

Back aft is a roomy cockpit with davits for easily deploying the tender. Here, also, is the lazarette hatch for accessing the steering gear.

Up some sturdy steps with hand rails leads to the flybridge via a little half deck atop the aft cabintop. Here is the completely enclosed flybridge, which is very large and a great place to enjoy the sea going by. There is a large freezer here with another cooler and a small refrigerator. Three Captain's chairs are lined up in front of the console. You

are high up out of the water here and the view around the vessel is very good. The vessel can be controlled from this position as well as the downstairs helm position. Because of the visibility here, most would probably prefer piloting from this position.

Back down and into the very roomy Salon one is surrounded with warm teak and plenty of light. The inside of the vessel is completely air conditioned and a pleasant place to be in. Here in the Salon is a dinette opposed by two comfortable chairs to port. The downstairs helm position is here with all the same navigational equipment needed to fully and safely navigate the vessel.

The Galley is down and forward with everything needed to prepare meals just as if you were at home.

Across from the Galley is the guest head. This space is very large with a separate shower stall.

Forward yet, is the guest Stateroom. This is a very large "V" berth affair that will easily sleep two in comfort. Here too are hanging closet and drawers.

Back aft is the Master Stateroom which is not cramped in the slightest. A Queen bed is here surrounded with stowage cabinetry. Here too is an ensuite head that is very convenient to the occupants.

The vessel in its entirety is very roomy and would make a great live aboard or would also be great for an extended trip.

Brokers Observations:

Trawlers in the 100k or under price range are getting harder to find today. This vessel is ready for another adventure. This vessel makes a lot of sense for the traveling adventurer. She is safe comfortable and roomy. Having the ability to run with one engine is very economical. In the opposite sense, this trawler has enough power to move quickly if needed. Sunny Day's is a very attractive offer for those planning on doing the "Great Loop" or just going where the heart desires in comfort safely.

Основная информация

Тип судна: Trawler Yacht

Модельный год: 1988

Год постройки: 1988

Страна: United States

Размеры

Длина общая: 44' (13.41mm)

Длина по ватерлинии: 38' 8"
(11.79mm)

Ширина: 14.33

Макс. осадка: 4' 4" (1.32mm)

Скорость, вместимость и масса

Вместимость воды: 250 Gallons

Объем топливного бака: 500 Gal
Gallons

Размещение

Всего кают: 2

Всего коек: 3

Всего ком. состава: 2

Корпус и палуба

Материал корпуса: Fiberglass

Информация о двигателе

Двигатели: 2

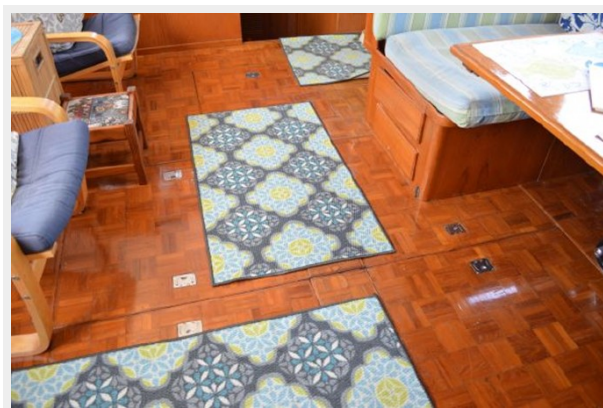
Производитель: Lehman

Тип двигателя: Inboard

Тип топлива: Diesel

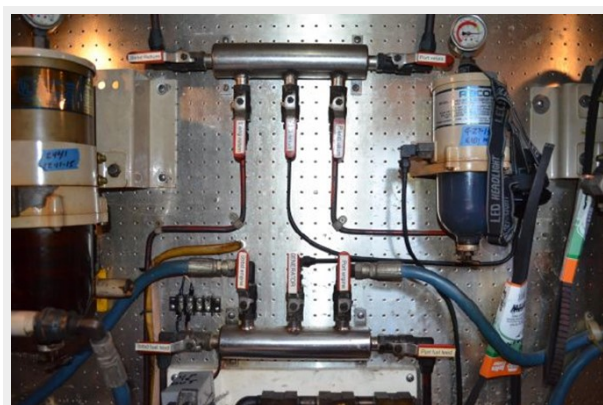
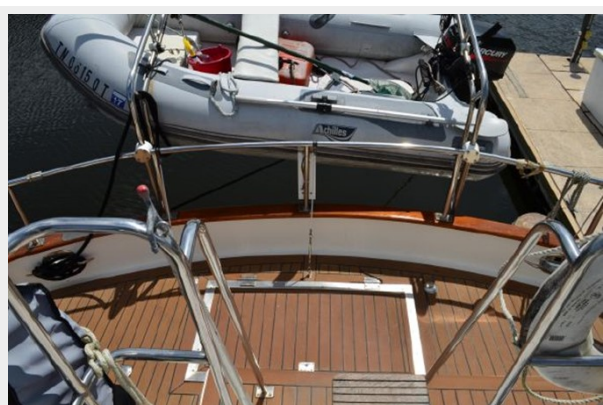
ФОТОГРАФИИ











КОНТАКТЫ

Андрей Шестаков (Andrey Shestakov) – ведущий яхтенный брокер отдела продаж яхт и судов компании Shestakov Yacht Sales Inc. Официальный представитель Shestakov Yacht Sales Inc. для русскоговорящих клиентов в центральном офисе компании в Майами/Форт Лодердейл/Флорида/США.

Контактная информация

Email: **andrey@shestakovyachtsales.com**

Web: **shestakovyachtsales.com**

Телефоны

Краснодарский край: **+7(918)465-66-44**

США, Майами, Флорида: **+1(954)274-4435**

Время работы

Понедельник – Суббота: **9:00 - 21:00** EDT

Воскресенье: **Закрыто**

Адрес



Harbour Towne Marina, 850 NE 3rd St, STE 213, Dania, FL 33004